

# RINGMORE PARISH NEWSLETTER

November 2013

Issue 335 Edited by Sally

Deadline: for December's Issue : 22 November



Welcome Tara, read all about her in Pat Dolby's Article.

A warm welcome to William and Ollie Barrett who have joined the Newsletter delivery team. William and Ollie will be taking over Judith's delivery round. Well done the pair of you! The Editorial Team



"Anyone who missed the concert in the Parish Room on Friday 18<sup>th</sup> October missed a treat.." Read on with Richard Baker's Article.

## DIARY DATES:

Monday Short Mat Bowls  
Tuesday Table Tennis, Parish Rm, 8.00pm  
Wednesday Cameo Coffee 10.30-12.00

### November

1 RBL Auction JE Inn from 7.00 pm  
4 Tearfund Lunch—12-2pm—WI Hall  
6 Film/fish&chips Memorial Hall  
6 RBL Meeting, Dolphin 7.30pm  
9 RBL Coffee Morning, Reading Room. 10.00-12.00  
10 Remembrance Service, All Hallows  
12 Basic First Aid Session—7-9pm Bigbury Memorial Hall  
14 WI Meeting—WI Hall 8pm  
16 Poetry evening, Memorial Hall  
16 Film Show, Parish Room 6.45 for 7.00  
9 Parish Council Meeting, W.I Hall 7.00  
20 RHS AGM  
27 Coffee Morning Bigbury Memorial Hall 10.00 am  
29 John Simes The Dream Factory—Ghosts JE 7.30pm  
30 House hold Skip in Ringmore 9.30am -3.30pm  
30 Christmas Cleaning All Hallows 10.00 am onwards  
Choir Practice Barnford 6th , 13th , 20 th and 27th 7.30 pm

### December

4 RBL Meeting, Journey's Inn, 7.30  
7 Christmas Bazaar, Parish Rm 11.00-2.00  
14 Film Show, Parish Room 6.45 for 7.30  
22 Carol Service, All Hallows

### January 2014

8 Film Show, Parish Room 6.45 for 7.30

### February

3 Tearfund Lunch—12-2pm—WI Hall  
15 Film Show, Parish Room 6.45 for 7.30

### March

3 Tearfund Lunch—12-2pm—WI Hall  
15 Film Show Parish Room 6.45 for 7.30

## **BIGBURY MEMORIAL HALL**

### **November Events:**

**Wed. 6<sup>th</sup> November:** 7.30 for 8.00pm Film and Fish and Chip Night - Les Miserables. Tickets £10 from Ashley at Bigbury Stores or Holywell Stores.

### **Future Events:**

**Wednesday 4<sup>th</sup> December:** 10.30 Korniloff Coffee morning in aid of the Hall.

**Friday 6<sup>th</sup> December:** 7.30pm Wine tasting with Richard Taylor

**Friday 10<sup>th</sup> January:** Quiz night

*Also:*

**50:100 Club** (Promoted by Dane Vanstone). Tickets (£10) for the nine draws from November 2013 to July 2014 are on sale from Holywell Stores, Bigbury Village Shop and Bigbury-on-Sea Post Office. Buy now for your chance to win our second draw of the competition. 50% of the money goes in prizes and 50% to the Memorial Hall. Lucky winners for October were Linda Browne (£20) and Ellen Bardens (£10).

*Collingwood Publishing invites you to...*

Meet the Author John Simes and his debut novel  
**THE DREAM FACTORY - GHOSTS**

# **BOOK LAUNCH**

**Friday 29th  
November 2013**

**7.30pm  
for 8pm**

**Journey's End,  
Ringmore**



**"Someone tried to kill an idea."**

John Simes debut is clever and intelligent, fast-moving with a shot of gothic horror - *The Dream Factory, Ghosts* delivers a rich reading experience - classic cult fiction.

Available in paperback or on Kindle  
from 3rd November 2013

[www.johnsimes.co.uk](http://www.johnsimes.co.uk)  
[www.collingwoodpublishing.com](http://www.collingwoodpublishing.com)

# The Dream Factory ~ Ghosts

'The Dream Factory ~ Ghosts' my debut novel is being published on the 5<sup>th</sup> November 2013. If you would like to have a signed copy, join me at the Journeys End on Friday 29<sup>th</sup> November at 7.30-8.00pm. Beer goes particularly well with literature – I find – and I will be reading a couple of sections from the book, including one of the creepier parts! It is intended for adults and young adults.

If you bought it I hope you really enjoyed it – there is little in life as satisfying as completing a piece of work that honestly says what you want it to say, and for someone else to enter that world with you. The exciting thing is that the folk walking through my world - gently nudging open the doorway, looking for the light switch, wondering where I keep my beer - will mostly be strangers to me. Or as Peter Young realises in the Dream Factory, 'There are no strangers here - only friends whom we have yet to meet.' So, welcome all, dear friends – old and new.

I have spent most of my life teaching and leading in schools. Some of my experiences as a child are recorded in The Dream Factory ~ Ghosts (I really did believe there was a ghost in my room!). For all that I was a very lucky child, loved by my mum, dad and sister and probably spoiled a bit; I realised later that I was a darn sight luckier than some of the children I was to encounter in the classroom.

As a child I used to dream. When I was given my 'First Book of Poetry', I really began dreaming, and I did all those things you probably did – or do. I lay on my bed looking at the cracks in the ceiling, imagining, roads, railways, paths, valleys, landscapes.

I taught children who dreamed, whose minds would wander to more stimulating – or safer – shores. Or they would confront the demons they had discovered were plaguing their lives, and slay them in their minds, all this while wearing a quiet smile and pretending to do maths – or, in my lessons, puzzling how to write a haiku, or grasp the idea that 'necessary' only has one 'c' in it, or that Piggy really was a genius..... (If you want to read more go to [www.johnsimes.co.uk](http://www.johnsimes.co.uk). Also you can enjoy some of the art work and music devised by some very creative people to go with e book at [www.visitthedreamfactory.com](http://www.visitthedreamfactory.com) – from 15<sup>th</sup> November. You are also invited to submit your own sketches, poems, and comments).

John



**CHRISTMAS BAZAAR**

**SATURDAY 7th DECEMBER**

**11.00 - 2.00**

**PARISH ROOM**

**Mulled wine , mince pies, and refreshments**

**lots of lovely crafty things to buy all locally made**

**PROCEEDS TO RINGMORE PARISH NEWSLETTER**

**RINGMORE HISTORICAL SOCIETY  
ANNUAL GENERAL MEETING**

**WEDNESDAY NOVEMBER 20th AT 7.30  
IN THE WI HALL**

**Following the AGM there will be a demonstration of the  
Archive showing how it will be used to store and access the  
Society's records.  
Members' participation will be important.**

**NON MEMBERS AND PROSPECTIVE NEW MEMBERS  
WILL BE WELCOME TO COME AT 8.0**

**FREE ADMISSION AND A GLASS OF WINE**

McMillan sends a "thank you" for the support of the **BIG COFFEE MORNING**.  
We took £250 which is not bad for two hours chat and cuppa!  
Cheers to the **BRILLIANT BAKERS** who helped the great cause over the ranges of Ringmore.  
As the Scots say 'Wha's like us'  
Anna



A big thank you to everyone who took part in this year's Bigbury Fun Run, **we raised a total of £1900**, and below is a breakdown of the donations we have made.

**BIGBURY FUN RUN**

Donations	2013
	£
Devon Air Ambulance	1,000
St. Lawrence's Church	150
Modbury Caring	150
Jamie Procter's Foundation	100
Challaborough Defibrillator Fund	400
Kingston Young Peoples Assoc	100
<b>Total</b>	<b>1,900</b>

**MODBURY SCHOOL  
CHRISTMAS CRAFT & GIFT FAIR**  
Saturday 30<sup>th</sup> November 2013  
11am - 4pm Free admission  
Modbury Memorial Hall (PL21 0RF)  
Locally made crafts, gifts, jewellery & greetings cards  
Crafty 'Make and Takes' available  
Refreshments, sausage & bacon rolls, teas, coffees and homemade cakes  
For further information regarding this event contact Christine Eyles (Phone: 01753 61052) or [www.modburyschool.co.uk](http://www.modburyschool.co.uk)  
And just over the road....

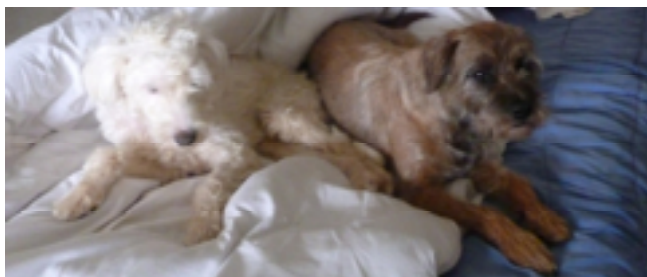
**A CHRISTMAS BAZAAR  
IN THE SCHOOL HALL**  
11am - 2pm  
Toys, books, tombola, gifts, stalls for the children and plenty of yummy cakes!  
In aid of Modbury School Charity No 1270810

**DON'T LET LIFE PASS YOU BY!** And be ready to help others to hold on to theirs!

Free and all are welcome.

*Sandy Hammond*

Basic first aid knowledge saves lives! Tuesday 12th November, Bigbury Memorial Hall 7-9pm (defibrillator refresher included)



proach her. She especially likes children. Considering that she has never been in a house before she has taken to sofas and beds like the proverbial duck to water and is very respectful of her seniors ie Lily the cat and Tavy the border terrier. It was a joy to see her run amok on Bigbury Beach - the first time she has been off a leash or chain. Although she is deaf, we are not yet sure if she is totally deaf, she keeps us in sight and comes back if we wave at her.

Pat Dolby (Challaborough)

Tara (short for Taramasalata) has arrived safe and well from Greece via Italy, France and Dover. She is VERY friendly so if you see her out walking feel free to ap-

## RINGMORE PARISH COUNCIL COUNCILLOR VACANCY

A casual vacancy exists on the Parish Council and applications are invited from prospective councillors. If you would like to be considered please let the clerk know at the address below.

If you would like to know more about being a councillor please contact one of the councillors.

*When a casual vacancy arises, the council must as soon as practicable, give public notice of the vacancy by posting the notice in some conspicuous place or places within the parish or community.*

*If within 14 days after public notice has been given, at least ten electors give written notice to the proper officer of South Hams District Council at Follaton House, Totnes, TQ9 5NE of a request for an election to fill the vacancy, then a by-election must be held except where a vacancy occurs within six months of the next ordinary elections.*

*If no by-election is called, the council must as soon as practicable after the 14 day period, fill the vacancy by co-option. If the vacancy falls within the six month period the council may but need not, fill the vacancy.*

*The council may co-opt whom it pleases to fill a vacancy, provided the person is qualified to be a councillor. The person co-opted must receive a majority of votes of those councillors present and voting at the meeting where the co-option takes place.*

### **Peter Javes**

22 Glebe Land

Aveton Gifford

Kingsbridge TQ7 4LX

Tel 01548 559283

[peter.javes@btinternet.com](mailto:peter.javes@btinternet.com)

## AUTUMN CLEAN HOUSEHOLD WASTE CONTAINER SATURDAY 30th NOVEMBER 2013

The Parish Council has organised a skip to be available to Parishioners for the disposal of unwanted household items, including televisions and computer monitors, wood and green garden waste, etc.

The container will be available at the bustop in Ringmore from 09.30 until 15.30.

South Hams Containers personnel will be in attendance to assist.

Ringmore Parish Council

**RINGMORE PARISH COUNCIL**

**MINUTES OF A MEETING HELD ON 22 OCTOBER 2013  
IN THE W.I. HALL, RINGMORE AT 7.00 PM**

<b>Present</b>	Cllr Mike Hammond	MH	Chairman
	Cllr Jeremy Deverson	JD	
	Cllr Brian Lambell	BL	
	Cllr James Parkin	JP	
	Cllr John Reynolds	JR	
<b>In attendance</b>	Peter Javes	PJ	Clerk
<b>Apologies</b>	Cllr Sarah Hitchmough	SH	
	County Cllr William Mumford	WM	
	District Cllr Bryan Carson	BC	

Members of the public present: 0, PCSO Sophie Hack

**109/13 DECLARATIONS OF INTEREST**

None

**110/13 MINUTES OF THE PREVIOUS MEETING**

It was noted that in minute 100/13 the reference No. 4 should have been FP9. With this change accepted:-

**RESOLUTION THAT** the minutes of the meeting held on 18 September 2013 be accepted as a correct record.

**Proposed:** Cllr James Parkin **Seconded:** Cllr Brian Lambell

**Resolution carried unanimously.** The minutes were signed by the Chairman.

**111/13 MATTERS ARISING**

**111.1 Traffic Calming**

No progress to date. It remained to procure an artist's impression of the proposed scheme. JEM

**111.2 Traffic Speed Survey**

WM to be asked to comment on progress. WM

**111.3 Kachelo Wall**

The Clerk was instructed to chase Building Control. Clerk

**111.4 Challaborough Defibrillator**

It was reported that funding of £1,690 had been raised or committed to date. Thus it did not seem that any further grant funding was needed. There was confusion as to who would be buying and operating the equipment. JP would try and ascertain. It was recognized that there were clear advantages if the PC bought the equipment, since any VAT could then be reclaimed and the PC insurance would apply. JP

**112/13 POLICE CRIME REPORT**

PCSO Sophie Hack addressed the meeting with a crime report from July to date. There had been two thefts in the parish. One from car in the National Trust car park and one from a house for which an arrest had been made. It was suggested that warning signs re theft from cars could be posted in the car park. The meeting also discussed incidences of illegal fishing at Challaborough.

**113/13 PLANNING**

**40/1704/13/F Rock Cottage – Ringmore, Convert into two dwellings**

It was noted that SHDC had granted permission. The PC's comments on parking on the Rock had been dismissed. BC would be invited to comment. BC  
JEM would draft a letter to the owners inviting them to take heed of the effect on the street scene on inappropriate treatment of the Rock. JEM

**114/13 FINANCE**

Bank balances as at 22 October 2013	£10,668.55
<b>Payments</b>	
Peter Javes – administration	80.80
John Reynolds	7.40
B. Cole re skip	538.86
Jeremy Deverson PPP	77.00
Jeremy Deverson Grass cutting	60.00
<b>TOTAL</b>	<u>764.06</u>
The above payments were approved.	
<b>Thus cash now available</b>	<u>£9,904.49</u>

**115/13 AUDIT 2013**

The external auditor's comments on the 2012-2013 annual return were noted. The statutory notice advising parishioners of their right to examine the accounts

## RINGMORE PARISH COUNCIL

- would be posted on the notice board. MH
- 116/13 **PARISH PATHS PARTNERSHIP**  
Footpath no. 4: to be repaired later in the year  
Footpath no. 9 at Lower Manor Farm- completed, stream dredged  
Footpath no. 13 at Cockle Lane completed
- 117/13 **ENVIRONMENTAL MATTERS**
- 117.1 **Flood Remedial Works**  
JEM was in touch with DCC re clearing verges etc to deal with water run-off along Rectory Lane and replacing the grill below the church.
- 117.2 **Town Well**  
Following minute 100/13 the Chairman tabled a decision notice dated 28 July 1972 confirming that the Town Well was common land that is, not owned by any person.  
*Subsequent to the meeting the Clerk confirmed that the Town Well was indeed on the register of common land as 49466 Town Well, Ringmore, no. VG.57.*  
Work had started on clearing vegetation at Town Well. Clerk
- 117.4 **Skip**  
A skip for Ringmore parish had been arranged for 30 November 2013.
- 117.5 **Tidy Up**  
The laurels on Darkie Lane would be cut back.  
Volunteers were needed to help with the proposed general tidy up in the parish.
- 118/13 **CHALLABOROUGH WINTER TOILET CLOSURE**  
It was noted that SHDC had published a list of toilets it proposed to close during the winter. The toilets at Challaborough were included to save cleaning costs. SHDC would be asked to provide the cost of cleaning the toilets at Challaborough for the three winter months. Clerk/BC
- 119/13 **WREATH FOR WAR MEMORAIL REMEMBRANCE SERVICE**  
**RESOLUTION THAT** the Council meet the cost of a wreath for the Royal British Legion. **Proposed:** Cllr James Parkin **Seconded:** Cllr Jeremy Deverson **Resolution carried unanimously**
- 120/13 **MEETINGS CALENDAR 2014**  
The meetings calendar at Annex was adopted and the Clerk was instructed to book the WI hall accordingly. Clerk
- 121/13 **MEETINGS ATTENDED BY COUNCILLORS AND CLERK**  
JR and NT re community orchard.
- 122/13 **CORRESPONDENCE**  
Super cluster meeting 11 November 2013- MH and BL to attend.  
Copy letter to tree warden re proposed cutting back of trees at The Paddock.  
DCC re Highway Safety Awareness  
DCC re mobile library schedule
- 123/13 **FOR DISCUSSION AT NEXT MEETING**  
Defibrillator for Challaborough  
Apple pressing equipment  
Precept 2014-5  
TAP bid for Parish Lengthsman


Meeting closed at 8.55 pm Next meeting: Tuesday 19 November 2013 at 7.00 pm

**Annex A MEETINGS CALENDAR 2014**

All meetings on Tuesdays to start at 7.00pm in the WI Hall unless otherwise advised

21 January	18 February
18 March	22 April
20 May @ 6.45 followed by annual meeting @ 7.30	17 June
22 July	August – no meeting
23 September	21 October
18 November	December – no meeting

## CHURCH SERVICES & THOUGHT FOR THE MONTH

	Bigbury 11.00 am	Kingston 9.30 am	Ringmore 9.30 am
3 <sup>rd</sup> November	Family Communion	Family Communion	Sunday Worship
10 <sup>th</sup> November			Remembrance Service (10.50 am)
17 <sup>th</sup> November	Sunday Worship	Sunday Worship	Village Service
20 <sup>th</sup> November	Komiloff Communion (2.30 pm)		
24 <sup>th</sup> November	Holy Communion*	Village Service	Family Communion

\* Service in traditional language

### SAINTS ALIVE!

On the First of November each year, the Church remembers the saints, - all those men and women who have gone before us in faith and whose Christian discipleship has inspired subsequent generations.

So who were these people, the mysterious figures in colourful robes who often look down on us from stained glass windows of churches, and whose names seem to appear all around us? For instance, our national flag, which is made up of the crosses of St George, St Andrew and St Patrick, is waved at international sporting events; each year lovers send cards and give flowers and gifts on St Valentine's Day; and Santa Claus (St Nicholas) arrives far too early in the stores. All over the world places and cities are named after saints - San Francisco, St David's and St Helena to mention but a few.

One thing for certain is that in reality these saints were not 'holier-than-thou' perfect men and women with haloes around their heads. Mostly they were ordinary people from ordinary backgrounds who had put aside their pride and fears and had served God faithfully by helping the poor and the suffering; standing out against prejudice, cruelty and injustice; and devoting time to contemplation and wisdom instead of to the remorseless acquisition of money and power.

At the present time there are probably thousands of ordinary people who, like the saints, are helping others and trying to promote justice, and are uncelebrated and unremembered, known only to God. But there is one thing which all of these people, known and unknown, had and have in common, - a trust in God and a belief that he is always present in times of joy and sorrow, and that he will give them strength and help to cope with times of trouble and distress.

I will leave you with an apt quotation from Corrie Ten Boom who suffered in a Nazi death camp - 'if you look at the world, you will be distressed; if you look within you, you will be depressed; but if you look at Christ, you will be at rest'.

Joyce Howitt

(Joyce is a Reader and Totnes Archdeaconry Readers' Secretary who is kindly assisting with services in the Team)

*Team Rector: The Revd Neil Barker (830260: any day except Mondays)*

*Team Vicar: (vacant)*

*Team Readers: Chris Lally (521587), Michael Tagent (810520)*

*Website: [www.modburyteam.org](http://www.modburyteam.org)*



**To all our Friends and Neighbours  
A few words from the Purdy family  
In response to your reaction to Steve's accident**

**Thank You**

Thank you; for all the kind words and well wishing to Steve.  
Thank you; for the all the help and encouragement for Karen and the girls.  
Thank you; for the massive effort completing the work Steve couldn't.  
Thank you; for the lifts and running around, given so freely and without hesitation.  
Thank you; to those Bravehearts who have pushed Steve's chariot to the Journey's End.  
Thank you; to everyone in the Journey's End for making me so welcome.  
Thank you; for the trip to Exeter Chiefs rugby.  
Thank you; for the phone calls and visits, those few minutes really raise the spirits.  
Thank you; for all the offers of yet more help.  
Thank you; for being the wonderful people you are.

**Thank you; Karen, Eleanor and Grace for everything.**

**Thank you.**

**SOUTH HAMS REGISTER OF ELECTORS 2014**

**DID YOU KNOW?**

1. The Register of Electors is compiled each year.
2. Information is required by law, from each household, annually – forms were sent out on 1 October. If you haven't received one contact South Hams District Council Electoral Registration Office (01803) 861434
3. Persons who do not register may be liable for a fine of up to £1000.
4. Electors whose details are printed correctly on the form may register using the automated free phone number (if the telephone used has touch-tone dialling), or via the internet – using the security numbers printed on the form. Or simply by signing and posting back the form.
5. Only those persons whose names appear on the Register will be entitled to vote.
6. You have some choice about who can buy your details. The Electoral Registration Officer must publish two registers: the full version and an edited version. If you place a tick in the box on the registration form for exclusion from the edited register, your name and address will only appear on the full register which will only be used for certain lawful purposes, such as elections, law enforcement and checking applications for credit. If you do not place a tick in the box on the registration form your name will also appear on the edited version of the register which anyone can buy – this means anyone can use your details for any purpose.
7. There is no qualifying date so you do not have to wait to provide the information requested. Please return your form without delay to avoid a reminder being sent or a personal visit.

**ELIZABETH TUCKER ELECTORAL ADMINISTRATOR, SOUTH HAMS DISTRICT COUNCIL**

In response to Adrian's article last month "Well, well, well". The Ringmore Historical Society can identify seventeen wells or bore holes in or close to Ringmore. AND

The Historical Society archive also has a record of eleven wells in the village but did not include the one under Barnford, so now that makes twelve. They are sited at Marwell (St Mary's Well), Town Well, Old Castle, Cross Manor, Rock Cottage, Walnut Tree Cottage, Well Cottage, The Barn, Middle Manor, and two butter wells at Middle Manor and Lower Manor Farm. Are there any more ?

Richard Baker  
Ringmore Historical Society

✂ If anyone would like to put a coloured Christmas greeting in the newsletter, please send their  
✂ request to [ringmorenews@btconnect.com](mailto:ringmorenews@btconnect.com) or deliver it to Gillian by 22nd November 2013.  
✂ The cost is £2.00 per entry.



#### IMPORTANT NOTICE

BECAUSE OF THE DIFFICULTY OF GETTING A NEWSLETTER COMPILED AND PRINTED OVER THE BUSY CHRISTMAS PERIOD, WE WILL **NOT** BE PRODUCING A JANUARY ISSUE. IF YOU HAVE ANYTHING YOU WISH PUBLISHED BEFORE FEBRUARY, PLEASE GET IT TO THE RINGMORE NEWSLETTER IN TIME FOR THE DECEMBER ISSUE, DEADLINE: 22<sup>ND</sup> NOVEMBER 2013. MANY THANKS

#### MODBURY CARING

##### A NEW BEFRIENDING SERVICE

*Finding* support when faced with challenging times can be hard. Modbury Caring is here to help you with the things you need but which may not be covered by other organisations like the Health Service.

For several years Modbury Caring have successfully managed a patient transport service with volunteers taking patients to and from appointments.

It is planned to extend the service which Modbury Caring offers to include a befriending service, and this will be launched on 9<sup>th</sup> November.

Our plan is to recruit volunteers who would be prepared to offer support to members of the community who are patients of the Modbury Health Centre, who may be isolated, lonely or socially excluded with the aim of improving quality of life and promoting independence.

Examples of the ways befriending can help are many and varied and may include spending time with someone over a cup of tea, shopping, helping with form filling, or light gardening.

Volunteers will be given induction and training and supported by a co-ordinator who will match volunteers to clients.

Volunteering can be an immensely rewarding experience with a great deal to gain from both sides. A little of your time can make a huge difference to someone.

If you are interested and would like to know more about this new initiative, whether you are interested in becoming a volunteer or if you know of someone who may benefit from having a befriender then please join us for a coffee at the Lazy Cow on Saturday 9<sup>th</sup> November at 1030, or leave your contact details at Modbury Health Centre for the attention of the befriending co-ordinator.

## THE RINGMORE CALENDAR 2014

£5.95

Now on Sale at  
Holywell Stores,  
Fryer Tuck,  
Parkdean Holiday Park



or contact  
**James 810303**  
**Barry 810359**  
Proceeds to Parish  
Room Refurbishment



**A FILM FOR ALL THE FAMILY**  
**TO BE SHOWN IN THE PARISH ROOM**  
**ON SATURDAY 30TH NOVEMBER**

**3.30 pm TEA AND BUNS**

**4.15 pm TOY STORY 3**

**Admission Adults: £4 Children: £1**

If you wish to advertise in the Newsletter  
please contact

**Ringmorenews@btconnect.com**

Or any of the team :

Jane 811218, Gillian 810303,

Karen 810382, Lynn 810093, Sally 810639

Box Advert 1/8 of a Page

@ £22.00 per year (11 Issues)

**£2.50 per one off advert**

### *Ringmore Concert*



"Anyone who missed the concert in the Parish Room on Friday 18<sup>th</sup> October missed a treat. 90 people attended and were entertained by local people of all ages. Our local young musicians excelled both playing their instruments and with their singing, special mention must be made of Jack Highley's rendition of "Perpetual Motion", a very fast moving piece played on his violin. Jo and Paul Woodcock entertained with their folk singing and The Modbury Gospel Singers opened and closed this excellent evening.

Polly Rathbone (Cello), Christie McDougall (Violin), Jo & Paul Woodcock (Guitar & Folk), Phoebe & Jack Thomas (Piano), Izzy Farndon (Piano), Jack Highley (Violin), The Singing Sensations and The Modbury Gospel Singers. The performance was accompanied and conducted by Jo Highley "

*Richard Baker*

The newsletter is now being edited by Sally, Gillian and Lynn in turn, so please ensure you use the Ringmore news email below and not personal email addresses. If you have any news, views, jokes, interesting articles, recipes, book reviews, or something to celebrate, or share, please send information to : [ringmorenews@btconnect.com](mailto:ringmorenews@btconnect.com)  
Jane 811218, Gillian 810303, Karen 810382, Lynn 810093, or Sally 810639., Carmen 810028

#### **MOBILE LIBRARY**

**Tuesday November 5th and 19th**

Ringmore Church 11.20—11.55



Neighbourhood Watch —Nothing to Report

#### **Rainfall**

October 2013 141 mm  
10 year high 178 mm  
10 year low 38 mm  
10 year average 100 mm



#### **FRIDAY BUS SERVICE**

Departs Challaborough 09.47/Ringmore 09.55—Arrives Plymouth 10.49

Departs Plymouth 13.30—Arrives Ringmore 14.34/Challaborough 14.38

#### **Village Transport Scheme**

Please remember, if you need a car and driver to get you to hospital or to the dentist, then phone Phill or Sally Errett on 810547.

#### **FARE CAR SCHEME – USE IT OR LOSE IT**

Fare Car is operated by Ivy Cabs 01752 895555 by formal agreement with the Devon County Council. You need to phone them to book in advance

**To Modbury** £2.80 per single journey : Tuesdays, arrival 09.20, departure 12.30

Saturdays, arrival 11.35, departure 17.40

**To Ivybridge**, £3.50 per single journey: Saturdays only, arrival 12.05, departure 17.10

**To Kingsbridge**, £2.80 per single journey: Wednesdays, arrival 10.30 and 11.30, departure 12.30 and 13.30. This service is wheelchair accessible. Passengers can travel in an ordinary car seat or in a wheelchair. Anyone can use this service.

#### **Ringmore Parish First Aid Responder**

**In an Emergency First Call 999 then call any of us**

Lizzie Andrews 01548 810615

Sandy Hammond 01548 810572

Andi King 01548 811210

Emily Bohnet 01548 811210

Mike Wilson 01548 810211

Alan Eaves 01548 810648

Karen Purdy 01548 810382

Jane Reynolds 01548 811218

Debbie Mercy 01548 811276



The Newsletter editorial team are delighted to welcome a new member. Carmen Henderson has kindly offered her assistance and we know her services will be invaluable

Please send items for inclusion in the newsletter to e-mail: [ringmorenews@btconnect.com](mailto:ringmorenews@btconnect.com) or contact any of the team:

Jane 811218, Gillian 810303, Karen 810382, Lynn 810093, Sally 810639 Carmen 810028

All opinions expressed in this newsletter are those of individual writers, and not necessarily those of the Editorial team. The Parish Council does not guarantee or accept liability for any literature, advertised goods or services. They have not inspected or made checks regarding suppliers. The Editorial Team's decision is final.



**National  
Trust**

November is upon us and our winter works programme is now in full swing. This includes scrub management and footpath improvements.

Last month we were improving the footpath at Ayrmer, with a view to resolving the drainage issues. Silt has been removed from the stream at the bottom of Lower Manor to deepen the channel. This will allow the stream to follow its proper course and not flood the footpaths and surrounding field.

The hedges running along Ayrmer bridleway have been cut back to allow horses and riders to move down safely and to open up the path to walkers. Drainage improvement works have also been completed to enhance the condition of the path.

In the last edition of the newsletter I thanked the Ringmore Orchard volunteers for their help in producing a bumper crop of apples. In October the National Trust organised an event for the community to press the apples picked from the orchard. We pressed five varieties of apple: apple pear, paignton marigold, browns apple, winter stubbard and cornish pine. These produced a variety of delicious fresh juices for people to taste and take home with them. We also served warm spiced apple juice and apple cakes. The success of the event has inspired us and the community to work together to make this an annual occurrence.

**Helen Pattison**

**Community Ranger Intern**

Please contact your South Devon Rangers on 01548 562344 or email [lornasherriff@nationaltrust.org.uk](mailto:lornasherriff@nationaltrust.org.uk)

To keep up to date with the South Devon ranger team visit our blog at: [www.ntsouthdevoncountryside.co.uk](http://www.ntsouthdevoncountryside.co.uk)

Follow us on Twitter: @NTSouthDevon and Facebook: National Trust South Devon Countryside

### **PAY US £200 OR WE WILL LOCK YOUR COMPUTER FOR EVER**

**CRYPTOLOCKER** is a new computer virus that encrypts (locks) every file on a computer, which then cannot be unlocked unless you have the key. You will therefore be unable to open any of your files but the hackers may be able to. It is estimated that over a million computers have been affected to date.

#### **Protect yourself by:**

- \* Not opening any suspicious e mails, or attachments, such as from a bank
- \* Having good antivirus software and keeping it up to date-AVG Free is good
- \* Disconnecting an external hard drive unless backing up files
- \* Back up your files regularly
- \* Installing Windows and internet browser updates

Chances are you won't be a victim, but you could be.

Barry Old



## Ringmore WI – October meeting

Ringmore WI members and visitors were delighted to hear Jeanne Curtis who spoke on 'The History of Lace-making'.

It was in the first Elizabethan era that bobbins were gradually brought into England. Until this time lace arrived ready made in the country, having come via France, Holland and then Beer, in Devon, Honiton lace being the nearest in style to Continental lace. The Belgian lace makers produced, (and still do), a very very fine lace known as fairy lace.

When machine lace was developed over 200 years ago it was made to include a fault. How authentic! Many sayings, ie 'see a pin and pick it up' come from lace making, brass pins being of great value. Also the expression 'pin money' comes from the way lace was made using pins. Bobbins frequently have legends painted on the shaft commemorating birthdays, weddings and so on. Even glass bobbins are made to hold hair for a memory.

Children as young as four or five years would make lace to help towards the family coffers and could end up damaging their eyesight, which is why one would see workers sitting outside their cottages to take advantage of the better natural light. It could take an hour to produce just an inch.

There are still samples of woollen lace to be found as during the reign of Charles II people were not to be buried in 'good lace'. This woollen lace would often be left to family members in wills and could be divided up to be used again.

There was a tax on imported lace to protect English makers. This continued until Victorian times.

Jeanne showed us many finished items of lace from collars to handkerchief edgings to bookmarks to clothes brush backs.

Whilst offered the opportunity to learn a few stitches, few rose to the challenge but all agreed it was a small insight into a fascinating subject.

Next month on 14<sup>th</sup> November at 8 pm Roger Barrett will be speaking on 'Start Bay Lighthouse' and all are welcome.

SOUTH WEST DEVON CONSERVATIVE ASSOCIATION  
CHARTERLANDS BRANCH

### **COFFEE MORNING**

WITH AUTUMN & CHRISTMAS FLOWER ARRANGING DEMONSTRATION

BY GINNY McCABE  
at THE MEMORIAL HALL, ST ANN'S CHAPEL

**WEDNESDAY 27<sup>TH</sup> NOVEMBER 2013**

10.00am for 11.00am  
TICKETS: £5.00

Contact: Helen Smith (810386), Margaret Cocks (810765), Carole Hext (810251)

## All Hallows Church, Ringmore



### Harvest Festival

Very many thanks to all those who turned up to decorate the church and who with great imagination and skill transformed this beautiful building into a colourful display of flowers, fruit and vegetables.

Many thanks too to Tracey and Conor plus their staff for feeding us so very well at the Harvest Lunch; thanks too to Phill and others who organised this and gave us such a convivial time.

### Concert for Friends of All Hallows.

Compliments – and donations – are still coming in for this evening which was hugely enjoyed by both performers and the audience. There were over 90 of us in the Parish Room for a concert of singing and instrumental music, which raised about £350 for the church building; this evening was not intended primarily as a fund raising event, so we are indeed delighted with this. Many thanks to Jo Highley and all the performers who entertained us so well – and many thanks to all of you who contributed food and helped in so many ways.

### Churchyard Behaviour

It has been brought to our attention that unruly behaviour has been reported from individuals in the churchyard. The Churchyard is a place of remembrance for those sadly passed away so should be treated with the respect such a place deserves. Your co-operation in this matter would be greatly appreciated.

### Harvest Festival Produce

You may be pleased to know that the wonderful selection of produce so very kindly donated by parishioners was distributed to two worthy causes. The perishable items were given to the KorniloffCare Home at Bigbury on Sea where Georgina Phillips said it would be put to good use by their cooks and was very much appreciated. The non perishable items were given to the Kingsbridge Food bank situated in the Quay Centre where it was also appreciated and of course will be put to good use. The Kingsbridge Food Bank do a sterling job and Roger Tyler (01548 853287) thanked everyone very much for the excellent contributions, Roger also said that they are looking for more volunteers to assist in their valued work.

### Church Cleaning

The pre- Christmas Church cleaning will take place on **Saturday 30<sup>th</sup> November from 10.00am onwards**, Dusting, Polishing & Brass cleaning. Any help you can give will be greatly appreciated. If possible please bring your own cleaning equipment; we look forward to seeing you.

### Prayer Chain

From time to time, most of us feel the need for prayer (whether or not we go to church). Over the past few months many have felt the need and benefit of the prayer chain. If anyone has a prayer request, they can phone one of the numbers below and give details of the request (as much or as little detail as they wish). That person will then phone the next person on the list and so on - ensuring at least ten people are praying. Details will be kept confidential at all times. Rosemary Wilson 810211, Jenny Williams 810851, Mary Wilson 830280, Gill Tomlin 810028, Sally Errett 810547, Alice Thornton 810284, Judy Bull 810420, Alison Wynne-Powell 810407, Sally Ness 810639, Drina Williams 810405.

## Richard, The Earl Grey



Richard was born, at an early age as he would say, in Slough in 1939. Stephanie said that he remembered rationing, his first banana, piece of chocolate and seeing a zeppelin. Raised in Holne on the edge of Dartmoor, Richard became a quantity surveyor and worked for Ocean Foods before meeting Stephanie and marrying in 1974. He always maintained that it was lust at first sight! He inherited the title of Earl Grey in April 1963, interestingly on the same day that Will was born although obviously neither knew of the other and how their paths would eventually cross! However, he only took his seat in the House of Lords as an hereditary Liberal peer in 1976. Whilst in the House of Lords, Richard had a significant role in a number of areas including being the Liberal spokesman on social service issues with emphasis on disability policies. He was an official monitor of the elections in Rhodesia, now Zimbabwe in 1980 where he received death threats from the notorious Robert Mugabe. Of particular note was hosting a

delegation of native Canadian Indians in the House of Lords in 1979. They were in London to lobby for political recognition and the return of their land rights. Stephanie recalls how this required a high level of diplomacy, as the visitors were inclined to operate on their own time scale, wandering from the set agenda, and disappearing off into the Lords. He obviously did a good job as he was invited back by the Canadians to watch football being played in the Olympic stadium in Canada as part of the Grey cup. Whilst there, Stephanie said that Richard did the longest kick of the ball of any celebrity that year. She recalls other official trips included opening one of Canada's largest ploughing competitions in Grey county, Ontario and promoting tourism in Maycon Georgia for the cherry blossom festival where even the dust carts, were painted pink. His career in the Lords sadly ended in 1999 when Tony Blair abolished hereditary peers from the House of Lords. Lord Strathclyde said at the time, "The Prime Minister has taken a knife and scored a giant gash across the face of history." By this time, Richard had become Chairman of the London Cremation Company and President of the Cremation Society of Great Britain, posts he held for 22 years up until his death. This is why his formal funeral took place at Golders Green. Whilst Richard and Stephanie were living in Plymouth, Richard was helping Stephanie's brother Peter with the Plymouth sailing school as a bouncer. He was charged with ensuring that only officers entered, all gentlemen wore a tie and that Wrens and nurses were allowed in for free! When Richard took up his seat in the Lords, he and Stephanie found it difficult to be apart so much, so they rented a 70 ft. by 7ft narrow boat, in Rickmansworth on the Grand Union Canal. It was like living in a pencil box that was falling apart and leaked so badly that it had to be both over and underpinned with tarpaulin. They moved to Ringmore in 1982 and have lived in Greenway ever since, for over thirty years. They bought it fully furnished and the Scotts, the previous owners left half a bottle of whisky and half a bottle of sherry for them when they moved in on May 1st, 1982. From Greenway, Richard and Stephanie would travel in their camper van to spend winters in Portugal as well as exploring many parts of the world. Richard was a truly modest gentleman with the gift of engaging with people from all walks of life, making them feel at ease and that their views were of value. He was a man of integrity with a great sense of humour and enjoyment of life. He loved the quiet in Ringmore, Greenway and its peaceful garden. Most of all, though, he loved Stephanie and they were a devoted couple. I heard someone say once that they had the ideal marriage. They did. He will be greatly missed.

Taken from words spoken by Linda Rutkowska at the celebration of Richard's life held in Ringmore on Thursday 17<sup>th</sup> October 2013.

## The Exeter Inn Christmas Shopping Evening

Wednesday 27th November 7pm - 9.30pm

Shop in a friendly relaxed atmosphere  
Jewellery, Accessories, Bags & Scarves  
Christmas Decorations & Gifts  
Organic Soaps, Creams & Essential Oils  
Body Shop Products

In Aid Of Modbury Caring  
Charity No 107237



## FINDING THE JAM.

The girl in pale-blue overalls looked at the ancient chap;  
He wore a poppy on his coat, another in his cap.  
She said, "How come you're searching there amongst the bread and pies?  
If you want jam why don't you try the second aisle for size?"

"No, no, the next aisle, over there. I think you must be blind.  
I haven't time to waste on you. Are you out of your mind?  
If every single customer demanded what you ask,  
I'd never get the shelves restocked or any other task!"

The old man smiled and answered her: "The trouble is with me,  
My eyes aren't what they used to be. I find it hard to see.  
And stooping for that lower shelf gave me a giddy spell.  
I hate to have to say it, but my age begins to tell."

He didn't want to bore her with the real reasons why:  
The skin grafts on his forehead or the shrapnel in his thigh,  
Or any other souvenir left over from the war,  
Like both hands nicely barbecued in 1944.

He didn't think he'd tell her of the flesh-wound in his back,  
Or why he'd limped since bailing out when hit by Nazi flak,  
Or what the real reason was for noises in his head.  
He thought: She'll only wonder why yours truly isn't dead.

*Out of my mind?* She's right you know. I think I blew my fuse  
The day I downed two Messerschmitts and then went on the booze,  
Rolled Bader in a blanket, left him on the mantelpiece.  
Then made a rude proposal to the Air Vice Marshall's niece.

Some bits of me are missing, but I'll not fly back to base  
To join the angels on parade (or else the other place)  
Until I hear my number called and then I do believe,  
I'll land up there, turn switches off, and take eternal leave.

Out loud he said, "Ah, there's the jam, remind me where I pay.  
You must excuse old crocks like me who've long since had their day.  
Now listen dear, enjoy your life before it gets too late,  
'Cos you, like me, will one day find you've passed your sell-by date."

?

## TOWNS AND VILLAGES QUIZ

?

Thank you to those, not many, who submitted an entry. The answers are attached to this Newsletter. Several very good alternative answers were given and I have accepted some of them eg. Q30 Ramsgate and Q28 Studland. Sorry not to be able to accept more alternatives but there has to be a limit.

Joint winners this year are James and Gillian Parkin and some people with odd names, possibly canine in origin, from the Coach House. Because they are clearly very clever, household pets will be barred from participating next time. The winning scores were 33, and the runners up with 26 were Dennis and Di Collinson.

Well done all and thanks again for taking part.

Barry Old

### A BIG THANK YOU

We would like to thank everyone for their kindness in welcoming us to this wonderful village. We very much appreciate the warmth that has been shown to us since we have arrived (and the tolerance shown since we have been attending table tennis)!! A big thank you too to everyone who made the Harvest Festival such an enjoyable occasion and for the wonderful lunch that was provided by the Journey's End.

Keith, Mary & Pam

Ringmore Parish Room

**FILM NIGHT**

**Saturday November 16th**

**Doors open at 6.45 for a welcome drink**

**Film starts at 7.30**

**ILL MET BY  
MOONLIGHT**

Starring Dirk Bogarde

British Officers working with the Resistance in Crete are tasked with capturing a German General. What follows is a tale of "derring do" based on the real life exploits of Patrick Leigh Fermor.

**Admission £5 pay at the door**



[www.turkeysfromdevon.co.uk](http://www.turkeysfromdevon.co.uk)

Our bronze free-range turkeys are traditionally reared and prepared in the time-honoured way to give a moist, flavoursome meat for the centrepiece of your Christmas table. They meet the Golden Promise standard with welfare a top priority.

For further information or to place your order please ring the Walters family in Kingston on **(01548) 810259**

Home-reared sausages, bacon, hams and other meats also available to order.

**Potatoes now available**

£1

**RINGMORE TOWN QUIZ 2013**

Raising funds for the Ringmore Parish Room  
 Please return to Barry Old, End House, Ringmore, Devon, TQ7 4HW  
 or e mail to [barrington20@gmail.com](mailto:barrington20@gmail.com) by 12<sup>th</sup> October 2013  
 The winner will receive £10.00

The clues may be cryptic, but puns and clumsy pronunciations are also used.  
 Answers are all towns and villages in the UK, many in Devon and Cornwall

1	Was she consumed by oeufs?	EXETER	21	Add to my bank account	CREDITON
2	Greetings	HAYLE	22	Albert you're on	CUBERT
3	Was she a Muscovite?	REDRUTH	23	Where they swear a lot	FALMOUTH
4	Metric or imperial	GRAMPOUND	24	Look out!	WATCHET
5	Do they make windows here?	MULLION	25	Too long in the oven?	CHARD
6	Just the spot for a game	PLAYING PLACE	26	Abolish the church	AXMINSTER
7	Transpose the music	NEWQUAY	27	Pay to have a splash here	TOLPUDDLE
8	Pursue a stream	CHACEWATER	28	Where to get a piercing	LIPHOOK
9	Saint's older brother	ST. COLUMB MAJOR	29	How's your Ma?	MOTHERWELL
10	Birthplace of the river	CAMBORNE	30	Damage the entrance	MARGATE
11	Indentured and far from home	LONDON APPRENTICE	31	Carry on teasing	TAUNTON
12	Where they sound reveille	BUGLE	32	The off licence might	STOCKPORT
13	One who keeps at it	STICKER	33	What the happy couple might do	PICKERING
14	Patron saint of the flock	ST.EWE	34	Spirit of Spain	ELGIN
15	Invite a grilling	PROBUS	35	The place for good cooks	BAKEWELL
16	An aid to scrounging	CADGWITH	36	Not the highest harbour	PORTLOE
17	Two lads	DOUBLEBOIS	37	Eastern Royalty	INDIAN QUEENS
18	The Norwegian Blue's downfall	POLRUAN	38	Jonathon ponders	ROSS ON WYE
19	Big smiles on this beach	WIDEMOUTH	39	Success in the car auction	WINSFORD
20	Detective's car	CHANDLER'S FORD	40	A bit of airline crockery	BACUP
	Name..... .....	Address..... ..... .....			



Serving Devon's best seafood since 1989

**“a celebration of native seafood” Tom Parker-Bowles**

**2 COURSES FOR £12 OR £14 FOR 3 COURSES UNTIL CHRISTMAS EVE**

**7 days a week**

“The best Christmas Party menu in the South West”

Don't forget to book

**\*\*SHACK FISHMONGER MENU NOW AVAILABLE!\*\***

**Crab Soup, Fish Pies, Lobsters, Oysters, Crabs and Moules Mariniere to take home!  
Ring us with your order and take a Dish or a Fish home with you! Sorry no deliveries!**

Opening times 12 - 3pm & 6 - 9pm, closed on Sunday evenings

Closed 2nd January Re-open 3<sup>rd</sup> February 2014

[bigbury@oystershack.co.uk](mailto:bigbury@oystershack.co.uk) 01548 810876 [www.oystershack.co.uk](http://www.oystershack.co.uk)

# PORTUGAL

2 HOLIDAY APARTMENTS  
Near TAVIRA

TWO BEDROOMS  
SLEEPS 4

AIRCONDITIONED

45 minutes from  
Faro airport

Prices from £190  
Contact 01548 810513



# SHEPPARDS

Your Local Accountants

**CHARTERED ACCOUNTANTS**

Full Audit, Accountancy and  
Taxation Service

First Meeting Free  
Free Parking

www.sheppardsaccountants.co.uk  
Email: accounts@sheppardsaccountants.co.uk

**01752 220333**

22 The Square, The Millfields  
Plymouth PL21 3JX

## Holiday Accommodation

Kimberley, Ringmore  
Separate Weekly Self Catering  
Annex sleeps 4 or  
Daily B&B with Private Bathroom.

Delightful edge of village position  
Sea and Country Views

Please call on 01548 811115  
www.kimberley-annex.co.uk

## REFLEXOLOGY

FOR YOUR PHYSICAL, MENTAL AND  
EMOTIONAL WELLBEING

CLINICS (KINGSBRIDGE AND  
DARTINGTON) AND MOBILE VISITS

GIFT VOUCHERS AVAILABLE

**SERVANE CAPPS**  
MAR/ABC LEVEL 3  
QUALIFIED REFLEXOLOGIST  
01548 810988  
07814464156  
servanecapps@gmail.com



## J B S

### John Butler Stonework

#### Quality Stonework

Building & General Maintenance  
Free Estimates  
Efficient Service  
Based in the South Hams

### John Butler Services

#### Plumbing Maintenance and Repairs

Hot Water Systems

Boiler Service and Repairs  
Power flushing of central heating systems  
Gas, LPG and Oil  
Caravan and Holiday Home Safety Checks  
Gas Safe Registered  
Emergency Call Outs

**Tel: 01548 810462 / 07977 962091**

## Eryer Tuck's Take Away

CHALLABOROUGH BAY  
Tel: 01548 810425

Award-winning

### FISH & CHIPS

Pasties - Pizzas - Pies

Salcombe Dairy Ice Cream

Beach Goods - Wet Suits  
Boards for Hire

Easter to end October  
10.00am - 10.00pm

## ARBORFOR LIMITED



Professional Tree Surgery Service  
Fully Insured and HSE Compliant  
All aspects of Tree Management  
Wood Chipping Facility  
Mobile Elevated Working Platforms  
Houghton Farmhouse, Ringmore, Kingsbridge

Phone /Fax 01548 810 122  
Mobile 07785 903 203



**TILLY DOWNING** *B.Sc. Pod., M.Ch. S.*

STATE REGISTERED CHIROPODIST

Gentle, safe and



The Laurels, Fore Street, Aveton Gifford

Tel: 01548 550072

*Opposite the Memorial Hall Car Park*

**WINDOW AND DOOR SPECIALIST**

Locks & Mechanisms

Aluminium & PVC

Handles & Hinges

Glass with Condensation

*Free Advice & Quotations*

01803 292990 or 07831 192847



FORMER  
PILKINGTON  
ENGINEER

**A M KING & SONS**

All aspects of building work and  
renovations undertaken.

Bespoke double glazed wooden  
windows and doors

New kitchens and bathrooms

Interior and exterior decoration

**01548 810570**

**amkingandsons@fsmail.net**

**LOGS FOR SALE**

**Dry seasoned—mixed varieties  
Cut to your requirements**

**Winter 2013/14 prices per load  
£50, £90, £180 delivered**

**Please tel Tim on 01548 810284**

**MACKGILLS**



of **MODBURY**

4 Church Street, Modbury, Ivybridge, Devon. Tel: 01548 830860

**ELECSA**

Approved Contractor  
**Part P**

[www.elecsa.co.uk](http://www.elecsa.co.uk)



**TOM PITT  
ELECTRICALS**

**FULLY QUALIFIED ELECSA PART P REGISTERED  
ELECTRICIAN  
OUT OF HOURS CALL OUTS AVAILABLE**

CALL 01548 810943  
07809 702 727

[tomickpitt@hotmail.co.uk](mailto:tomickpitt@hotmail.co.uk)

**MATTHEW BISSEX ARCHITECTURAL SERVICES**  
**PLANNING AND BUILDING REGULATIONS APPLICATIONS**



*PLANS DRAWN FOR EXTENSIONS  
LOFT CONVERSIONS,  
CONSERVATORIES,  
NEW BUILD HOUSING,  
LISTED BUILDING APPLICATIONS,  
ACCREDITED SAP ASSESSOR*

Visit our website at [www.mbad.co.uk](http://www.mbad.co.uk)

For a free quote on plans for your build project contact  
Matthew on 01761 436861 or mobile 07843 286857

Looking for solar PV - see our solar website [www.eclipsesolarsouthwest.co.uk](http://www.eclipsesolarsouthwest.co.uk)



Looking for solar energy to  
reduce your electric bills?  
For a free quote, contact us on

01761 435770/07843 286857



[www.eclipsesolarsouthwest.co.uk](http://www.eclipsesolarsouthwest.co.uk)

**F. W. Jarvis & Sons**  
**Electrical Contractors**

Est. 1964

- New Installations & Rewires
- Inspection & Testing
- Electrical Heating Systems
- Lighting

All Work Guaranteed



Call Michael or Brian  
Tel. 01548 810438

**G H W Rosevear & Co**

*Chartered Secretaries and  
Incorporated Financial Accountants*



We pride ourselves  
on a personal,  
efficient and cost  
effective service

- Accountancy and Taxation
- Probate & Inheritance Tax (IHT)
- Company Secretarial Service
- Property Management

Office Hours: 9<sup>15</sup> am - 6<sup>00</sup> pm  
3 Madbury Court, 32 Church St,  
Holbury, Devon, PL21 0QR

Tel: 01548-831427  
Email: [office@holbrookass.com](mailto:office@holbrookass.com)

[www.accountantsouthdevon.co.uk](http://www.accountantsouthdevon.co.uk)

**P.W.S SERVICES**

**Tree Felling, Cutting, Trimming  
Tidying and Clearing Away**

**No Job too Big or too Small**

Seasoned or Fresh Cut Logs £60 per load  
Can be Packed and Put Away at a Small  
Charge

Telephone: 01548 810447



**Turtle Farm Produce**

*Autumn/Winter Opening Times:  
On Fri & Sat, only 11am-4pm  
Plants - Many Shrubs & Climbers  
Ready Potted Spring flowering bulbs  
"PLAN AHEAD & BE READY"*

*Orders now being taken for Xmas Pork, Lamb & Turkey  
Free Range Eggs Homemade Cakes and Pies  
Marmalades and Chutneys Homemade Ready meals available.  
Wild Bird Food Seasonal Vegetables & Potatoes  
Phone evenings—01548 810923— WE CAN ALSO DELIVER*

We are in the polytunnel on top of the hill Bowling Green Cross. Two ways in:  
The turning on the bend before the golf course or on the Bigbury Village to  
Challaborough/b-on-S road.

**KINGSBRIDGE  
EYE CARE GROUP**

1, The Promenade, Kingsbridge. Tel: 01548 856854

*Clinical Excellence*

Full Eye Health Examinations  
Contact Lens Specialists  
Retinal Photography  
Diabetic and Glaucoma Examinations  
OCT Screening Packages  
Luxury Designer Brands

Nigel Frost Optometrist  
3, Chene Court  
Modbury  
01548 830944

Salcombe Eye Care  
84, Fore Street  
Salcombe  
01548 843207

[www.kingsbridgeeyecare.co.uk](http://www.kingsbridgeeyecare.co.uk)

Hairdressing

GOLDWELL ghd M

Beauty

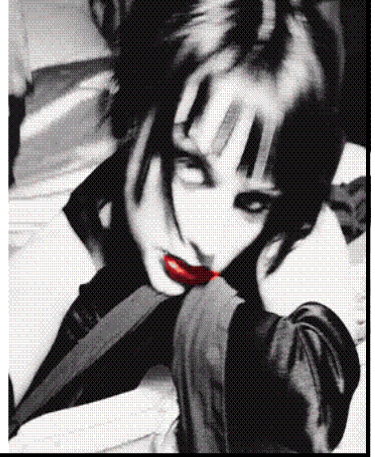
dermalogica Shellac

- Skin Treatments
- Body Massage
- Gel Nails
- Body Firming and Reducing Treatments
- Waxing
- Manicure and Pedicure
- Eyelash and Eyebrow Treatments

Late Night Fridays

London House, Church street, Modbury  
01548 830152  
[www.facebook.com/nicholashairandbeauty](http://www.facebook.com/nicholashairandbeauty)

Nicholas



**Karen Purdy** ITEC Dip, BM, AR, IHM, DTM, NMT, CThA  
Massage Therapy

Aromatherapy • Sports Injury Treatments  
Indian Head and Indian Face Massage  
Hopi Ear Candles

dermalogica Body Treatments

01548 810382

07968 718901

[mail@karenpurdy.co.uk](mailto:mail@karenpurdy.co.uk)

[www.karenpurdy.co.uk](http://www.karenpurdy.co.uk)



*Julie*  
Fully Qualified  
810634

Mobile  
Ladies & Gents  
Hair-stylist



**Holiday Let**

**The Beach House**

The Thatches Holiday Village, Modbury  
Three bedrooms, two bathrooms  
Luxury Accommodation.

Stunning views of Dartmoor

[www.thethatches.co.uk](http://www.thethatches.co.uk)

Chris Duff: 01548 830346

Angela & Peter Phipps:  
01932 867 090

**Fine Shine** LTD A COMPLETE CLEANING SERVICE

- Carpet Cleaning
  - Upholstery Cleaning
  - Rug Cleaning
  - Hard Floor Treatments
  - Stain & Odour Removal
  - Spring Cleans / Builders Cleans
  - Flood Restoration
  - Window Cleaning
  - Gutter Clearance
  - Pressure Washing
  - Vehicle Wash & Valeting
- **FREE QUOTATIONS**



[www.fine-shine.com](http://www.fine-shine.com)  
01548 854313  
[info@fine-shine.com](mailto:info@fine-shine.com)

Unit 10 Orchard Industrial  
Estate, Poplar Drive,  
Kingsbridge, TQ7 1SF

**Bed and Breakfast  
Ringmore Veian  
Ringmore**

Double Garden Room  
with en-suite shower room

Ringmore Village  
Close to village pub

10 minutes walk to  
Ayrmer Cove and access  
to the South West Coast Path

Telephone Karen or Steve  
01548 810382

web: [www.ringmorevean.co.uk](http://www.ringmorevean.co.uk)  
email: [enquiries@ringmorevean.co.uk](mailto:enquiries@ringmorevean.co.uk)

Do you want a photographic record of a Wedding,  
Christening, family gathering or something else?

or would you like tuition on taking photographs and  
preparing them for printing?

or perhaps making a slide show of the pictures to give  
to friends?

Contact Mike Wynne-Powell  
Photographer on 810407

see non people shots on - [www.flickr.com/photos/55776662@N08/](http://www.flickr.com/photos/55776662@N08/)





# HOLYWELL STORES



**Your one-stop shop**



**TURKEY TASTING**  
**SATURDAY 23rd NOVEMBER**  
**LOCAL KINGSTON TURKEY**  
**FARM GATE PRICES**  
**FREE BOTTLE OF WINE WITH EVERY**  
**ORDER PLACED ON THE 23rd**

**WINTER FUEL SPECIAL OFFER**

**10% OFF**

WHEN YOU BUY 5 BAGS OR MORE  
OF COAL, BRITEHEAT OR WILDFIRE  
OFFER INCS. DELIVERY IF REQUIRED

**LOCAL POTATOES**  
**£8.50 for 25kg**

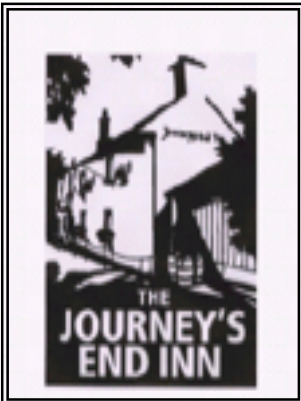
**HAVE YOU GOT A PET? DO YOU BUY IN LARGE QUANTITIES FOR YOUR PET?**  
**DO YOU REQUIRE SPECIALIST FOODS FOR YOUR PET?**  
**IF THE ANSWER TO ANY OF THE ABOVE IS YES**  
**PLEASE TALK TO US AND LET US QUOTE FOR YOU NEEDS**

**Holywell Stores & Post Office, St. Ann's Chapel, Bigbury**



**Shop Open**  
**Monday - Saturday 7am - 6pm**  
**(7am-8pm July & August)**  
**Sunday 8am - 5pm**

**Free Car Parking behind the shop**  
**Tel: 01548 810308**  
**Email: [holywellstores@msn.com](mailto:holywellstores@msn.com)**  
**[www.2day.ws/holywellstores](http://www.2day.ws/holywellstores)**



## The Journey's End Inn

Monday	closed all day - Open Bank Holidays		
Tuesday	Lunch & Dinner	12.00 -3.00	6.00-Close
Wednesday	Lunch & Dinner	12.00 -3.00	6.00-Close
Thursday	Lunch & Dinner	12.00 -3.00	6.00-Close
Friday	Lunch & Dinner	12.00 -3.00	6.00-Close
Saturday	Lunch & Dinner	Open All Day	
Sunday	Lunch only	Open All Day	

## The Journey's End Inn, how pubs used to be

\*\*\*\*\*

### Winter Specials—commencing 2nd November

\*\*\* £8.50 per dish \*\*\*

Rabbit and Chicken Pie, Cheddar Cheese Pastry, Spring Onion Mash

Beef Shin, Real Ale, Winter Root Vegetable Stew, Herb Dumplings

Slow Roast Pork Cheek, Bramley Apple Mash, Buttered Savoy Cabbage

Wok Fried Shitake Mushroom, Ruby Chard, Spring Onion, Butternut Pumpkin, Green Chilli, Egg Noodles

Available both lunch times and evenings except Sundays

\*\*\*\*\*

### Traditional Sunday Lunches

\*\*\*\*\*

Booking always advisable, especially weekends

\*\*\*\*\*

Royal British Legion Auction Fri 1 st Nov

From 7.00 pm

John Simes Local Author Book Launch -The Dream Factory—

Ghosts 7.30 pm

Look out for our music night in late November!

Conor and Tracy at The Journey's End Inn,

Ringmore, TQ7 4HL

01548 810205 [www.thejourneysend.com](http://www.thejourneysend.com)