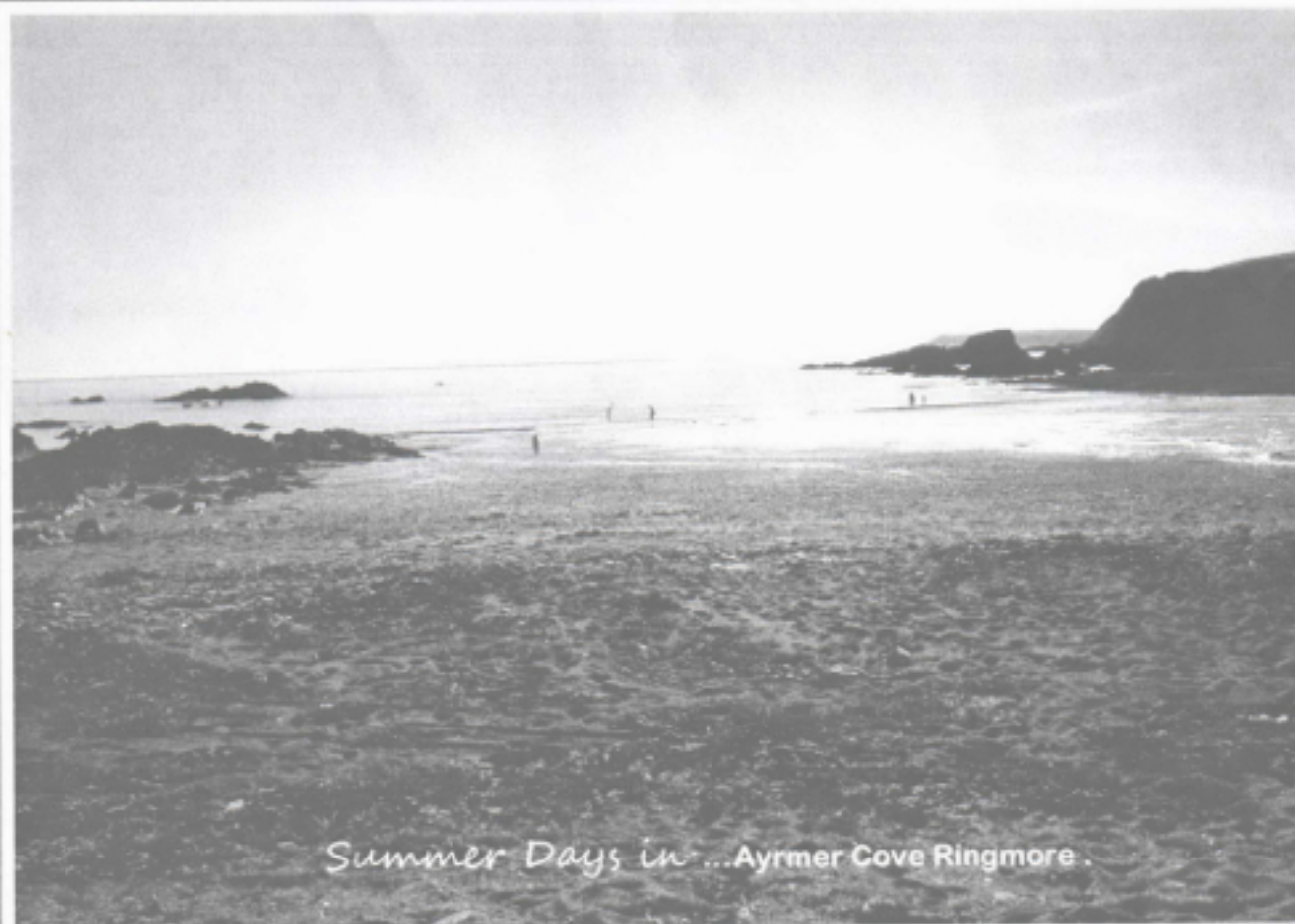


# Ringmore Parish Newsletter

## August 2012

Issue No: 321

Deadline for September Issue : 24th August 2012



*Summer Days in ...Ayrmer Cove Ringmore .*

Ayrmer Cove Bathed in Sunshine, a Perfect Summers Day, by Sally Ness 25th July 2012

### DIARY DATES:

Tuesday: Table Tennis, Parish Rm. 8.00pm  
Quiz Night, Journeys End 9.00pm

### August

1 Folk Evening Journey's End Evening  
9 Curry and Quiz Night WI Hall 6.30 meal 7.30 quiz  
27 Annual Church Fete Church House Field 2.30pm

Every Sunday cream Teams, WI Hall 3.15- 5.30 pm

### September

5 RBL Meeting, Dolphin 7.30pm  
5 Folk Evening Journey's End Evening  
18 Parish Council Meeting, WI Hall 7.00pm

### October

1st New Season Short Mat Bowls 7.30pm  
3rd RBL Meeting, Journey's End 7.30pm  
3rd Folk Evening Journey's End Evening  
13 Film Night Parish Room 7.30 pm  
23 Parish Council Meeting, WI Hall 7.00pm  
28 Harvest Festival Service All Hallows 9.30 am  
27 RBL Film Show Bigbury Memorial Hall 7.30 pm  
28 Harvest Festival Lunch Parish Room 12.30pm

### November

2 RBL Auction Journeys End 7.30 pm  
7 RBL Meeting, Dolphin 7.30pm  
7 Folk Evening Journey's End Evening  
10 RBL Coffee Morning to be advised  
11 Remembrance Service St James the Less Kingston  
17 Film Night Parish Room 7.30pm  
20 Parish Council Meeting, WI Hall 7.00pm  
21 Ringmore Historical Society AGM WI Hall 7.30pm

### December

5 RBL Meeting, Journey's End 7.30pm  
5 Folk Evening Journey's End Evening  
15 Film Night Parish Room 7.30pm  
16 Candle Lit Carol Service All Hallows 6.00pm

### January 2013

19 Film for Children Parish Room Afternoon

### February 2013

6 RBL Meeting To be advised 7.30 pm  
10 Film Night Parish Room 7.30 pm

### March 2013

6 RBL Meeting To Be advised 7.30pm  
16 Film Night Parish Room 7.30 pm

**T**hank you all for all your contributions, keep them coming! Whilst compiling this months edition, I might add, in this fantastic sunny weather, I seized upon the National trust Web site [www.50things.org.uk](http://www.50things.org.uk) which gives you 50 things to do before you are 11 ¾. ( have a look at the National trust page.)

Also with last months edition brimming over with Ringmore's recent festivities I have included some more pictures of Ringmore's Orchard, as they say, " *a picture is worth a thousand words.*" ( I just couldn't fit them into July ! )

We are looking forward to the **Fete on August Bank Holiday Monday, 27th** ( check the Diary ! ) Not only is it not to be missed , but it also represents our first anniversary of moving here to

Ringmore.

And now, I would I like to say a big heart felt Thank You\* to Gillian Parkin who has supervised and watched over all my efforts, picking me up and dusting me off when I thought all was lost with the newsletter, ( in a typographical way I might add, - literally whole newsletters losing themselves in the process of emailing...! ) and thank you Gillian for your words of encouragement and readiness to help me learn the ropes. Thank you Jane, Karen and Lynn for taking me into the team and making me feel very welcome. Lastly and most importantly thank you Perry, I wouldn't be able to do any of this without you holding it all together at home, where would I be without you? Love you loads.

Sally Ness

**"Truth is like the sun.  
You can shut it out for a time,  
but it ain't going away."**

~ Elvis Presley  
(1935 - 1977) ~



NOTHING TO REPORT

### MOBILE LIBRARY

**Tuesday 14th and 31st**

Ringmore Church 11.20 - 11.55



	Rainfall
July	152 mm
10 year average:	82 mm
10 year high:	152 mm 2012
10 year low:	28 mm 2006



### FRIDAY BUS SERVICE

Departs Challaborough 09.55/Ringmore 09.47—Arrives Plymouth 10.49  
Departs Plymouth 13.30—Arrives Ringmore 14.34/Challaborough 14.38

### Village Transport Scheme

Please remember, if you need a car and driver to get you to hospital or to the dentist, then phone Phill or Sally Errett on 810547.

### FARE CAR SCHEME - USE IT OR LOSE IT

Fare Car is operated by Ivy Cabs 01752 895555 by formal agreement with the Devon County Council. You need to phone them to book in advance

**To Modbury** £2.80 per single journey : Tuesdays, arrival 09.20, departure 12.30  
Saturdays, arrival 11.35, departure 17.40

**To Ivybridge**, £3.50 per single journey: Saturdays only, arrival 12.05, departure 17.10

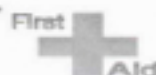
**To Kingsbridge**, £2.80 per single journey: Wednesdays, arrival 10.30 and 11.30, departure 12.30 and 13.30. This service is wheelchair accessible.

### The list of trained First Aiders

#### REMEMBER TO ALWAYS RING 999 FIRST

Sandy Hammond 810572  
Alan Eaves 810648  
Mike Wilson 810211  
Debbie Mercy 811276

Emily & Andi King 811210  
Karen Purdy 810382  
Jane Reynolds 811218



Please send items for inclusion in the newsletter to  
e-mail: [ringmorenews@btconnect.com](mailto:ringmorenews@btconnect.com) OR  
contact any of the team: Jane 811218, Gillian 810303, Karen 810382,  
Lynn 810093, Sally 810639

All opinions expressed in this newsletter are those of individual writers, and not necessarily those of the Editorial team. The Parish Council does not guarantee or accept liability for any literature, advertised goods or services. They have not inspected or made checks regarding suppliers. The Editorial Team's decision is final.

# Church Services and thought for the month

## Working Together

On the news recently we have heard once again the phrase 'the Dunkirk spirit'. The goodness of people helping others who have recently suffered loss; loss of business, homes, goods and possessions due to torrential floods.

In July, once the sun began to shine and the flood waters receded I took a walk to visit previously impassable places.

Travelling towards Venn, a nearby hamlet, the name reminded me of the 19<sup>th</sup> c. Rev Henry Venn, secretary of the Church Missionary Society for over thirty years from 1841.

The CMS believe in every member of the church being involved in the mission of Jesus. That mission is to show the love of God through action, helping the poor and needy. We tend to think of mission as 'going out and converting the heathen', but it is really just being Christ in the community around us; helping out those less fortunate, often through no fault of their own.

Helping out those around us is what builds communities, if we don't then we are just individuals who happen to live close to each other.

When Christ founded His Church He gave a 'new commandment' that we should love one another as He loved us, and made it clear that we could never be a mere collection of people.

This is picked up at the start of CMS commissioning prayer:

*In the name of the divine and mysterious Trinity  
You have called us into being through love  
You have joined us to one another in love  
You have placed us in your world in love*

Yours in Christ

## Lesley

	Bigbury 11.00 am	Kingston 9.30 am	Ringmore 9.30 am
5 <sup>th</sup> August	Family Communion	Family Communion	Family Service
12 <sup>th</sup> August	Family Service	Family Service	Holy Communion (BCP)
15 <sup>th</sup> August (Wednesday)	Korniloff Communion (2.30 pm)		
19 <sup>th</sup> August	Family Service	Holy Communion (BCP)	Village Service
26 <sup>th</sup> August	Holy Communion (BCP)	Family Service	Family Communion

Team Rector: The Revd Neil Barker (830260: not available on Mondays)

Team Vicar: The Revd Lesley Valiant (550933: not available on Fridays)

Team Readers: Chris Lally (521587), Michael Tagent (810520), Terry Valiant (550933)

Website: [www.modburyteam.org](http://www.modburyteam.org)

## PARISH COUNCIL MEETING

The Parish Council meeting scheduled for 24<sup>th</sup> July had to be postponed until 31<sup>st</sup> July. The minutes will, therefore, be too late for publication in the August newsletter but will appear in next month's issue. There is no Parish Council meeting in August.

**Michael Hammond**  
Chairman

## RINGMORE CHURCH FETE

2.30pm BANK HOLIDAY MONDAY 27<sup>th</sup> AUGUST

ANY CONTRIBUTIONS OF SUITABLE ITEMS YOU HAVE FOR ANY OF THE NUMEROUS STALLS LISTED BELOW WOULD BE VERY GRATEFULLY APPRECIATED.

Cakes, Produce, Bric-a-Brac, Tombola, Books, Raffle, Costume Jewellery, Crockery Smashing, Wine Bottle Game

ASSISTANCE WITH VEHICLES/TRAILERS FOR COLLECTING ITEMS FROM THE PARISH ROOM & WI HALL ON THE DAY WOULD ALSO BE GREATLY APPRECIATED

MANY THANKS IN ANTICIPATION PHILL ERRETT (810547)

## NEWS FROM ALL HALLOWS

### Village Service

For our July meeting we welcomed Gilbert Snook, who spoke to us on our unique relationship with Jesus. Thank you Gilbert for a clear and inspiring message. As usual we had a rather more informal meeting, for which we were also glad to be joined by several holiday visitors.



(whether or not we go to church). For this reason we have decided to start a prayer chain, and this is how it works - If anyone has a prayer request, they can phone one of the numbers below and give details of the request (as much or as little detail as they wish). That person will then phone the next person on the list and so on - ensuring at least ten people are praying. Details will be kept confidential at all times.

Rosemary Wilson 810211,	Alice Thornton 810284,
Jenny Williams 810851,	Judy Bull 810420,
Mary Wilson 830280,	Alison Wynne-Powell 810407,
Gill Tomlin 810028,	Sally Ness 810639,
Sally Errett 810547,	Drina Williams 810405.

### Prayer Chain

From time to time, most of us feel the need for prayer

Rosemary Piercy

Ringmore  
Bank Holiday  
Monday 27<sup>th</sup>  
August 2012

Church  
**Fete**

Live music from Mint Julip  
Hog Roast & Wine Bar  
Birds of Prey  
Ice Cream  
Bouncy Castle  
Crockerly smashing  
Refreshments & Cream Teas  
Bric - a - Brac  
Face Painting  
Tug - O - War  
World famous Egg throwing  
and lots more

Entrance £1 - Children free  
Opens @ 2.30pm

*You have the memories  
You have the pictures*

*Now make sure you have your  
Jubilee Souvenir Mug*



*only £4.80*

*A permanent remind of a unique occasion  
for you,  
your children and grandchildren*

**Contact Jackie or Michael  
Challaborough Cottage, Ringmore (810520)**

All profits will be given to charity

**Cream teas  
Home made cakes  
or just a cuppa!**

**Ringmore W.I. Hall**

*Every Sunday from  
22<sup>nd</sup> July to 2<sup>nd</sup> September  
3.15 to 5.30 p.m.*

***A treat for the whole family***

*Attorney: What was the first thing your husband said to you that morning?*

*Witness: He said 'Where am I Cathy?'*

*Attorney: And why did that upset you?*

*Witness: My name is Susan.*

*Attorney: This myasthenia gravis, does it affect your memory at all?*

*Witness: Yes.*

*Attorney: And in what ways does it affect your memory?*

*Witness: I forget.*

*Attorney: You forget? Can you give us an example of something you forgot?*

*Attorney: Now doctor, isn't it true that when a person dies in his sleep, he doesn't know about it until the next morning?*

*Witness: Did you actually pass the bar exam?*

*Attorney: The youngest son, the 20-year-old, how old is he?*

*Witness: He's 20, much like your IQ.*

*Attorney: Were you present when your picture was taken?*

*Witness: Are you kidding me?*

## MOON WALK



*"Plymouth was awash with "Pink Ladies"; it was a fantastic sight."*

*Julie Linzell*

**A**s most of you know, I did the Moon Walk in Plymouth on Saturday 21st July to raise money for St. Luke's Hospice. It was, once again, a terrific evening. Approximately 2,500 women walked either 7, 13 or 30 miles, all dressed in pink. Plymouth was awash with "Pink Ladies"; it was a fantastic sight. There was a wonderful atmosphere and everyone did really well, especially my friend **Pat Dolby** from Challaborough who, on her first Moon Walk, did *30 miles in 8 hours 48 minutes*. Well done Pat. I, however, only walked *7 miles with the rest of the girls and made it home in a time of 2 hours 9 minutes. Not bad*. The whole event raised approximately £125,000 for St. Luke's. I raised £250. A big thank you to all who supported and sponsored me. Yes, we will probably do it again next year!

Thanks again, Julie Linzell

To find out more about fund raising for Lukes Hospice contact [www.stlukes-hospice.org.uk/events.aspx](http://www.stlukes-hospice.org.uk/events.aspx) □

*Thank You!*

*Thank you so much to everyone who has helped us through the first six weeks of my recovery from a ruptured achilles tendon which forced me onto crutches and initially made me more or less chair bound. The acts of kindness and words of encouragement have really helped and I'm glad to say that the healing process seems to be going very well. Thank you again,*

*Christopher.*

### WANTED

If anyone has a redundant power supply (ex laptop or anything else) matching the requirements of mains in, 12 Volt DC 2 Amps negative inside power out, as picture below:-

Input : 100-240V-  
0.8A 50-60Hz  
Output : +12V = 2.0A



then please contact either Phill Errett (810547 or Mike Wynne-Powell (810407)

### ST. LUKE'S HOSPICE

Thank you to everyone who contributed to our recent annual Fund Raising occasion. It was a happy time and above all, raised £157 --- a very worthwhile offering towards St Luke's wonderful work.

Thank you again,  
Frank and Drina-

## RINGMORE HISTORICAL SOCIETY: THE OPEN MEETING HELD ON 2 JULY

**T**wenty-six people came to the Open Meeting. All except one were members of the Society. Wine was served and Barry Old was introduced as Chair for the evening. Barry briefly set out the scope of the proposed discussion. Two things had generated an opportunity to consider the future of the Historical Society:

- (i) the fact that over the last few years no new younger people had joined the Society,
- (ii) the fact that two long-serving members of the present Committee will be retiring in November.

We have to add to this the further fact that at the past three AGMs no Society member has responded to invitations to stand for election to the Committee.

At the same time it is clear and noteworthy that the Society is flourishing. Its membership has not fallen below forty in the last few years. (That is about one-fifth of the adult population of the parish.) Attendance at meetings, outings and events is good. Excellent progress has been made in sorting and ordering the archive, and the number of published booklets and items has grown. We now have a digital projector and a large and efficient printer, have funded the professional conservation of the Parish Tithe Map and have established a strong link with the Devon Rural Archive at Shilstone. Additionally, we offer a modest Search service for visitors to Ringmore who are seeking information about ancestors and family who once lived here.

The Open Meeting discussion began by considering a possibility propounded by the Committee and some of the members: would the Society attract new members and perhaps augment its committee if it widened its range of to include other areas of interest?

Some lively exchanges ensued, some members expressing support for widening the range, others voicing concern that such a move might result in a dilution of the work of the Society, or clash with the activities of other village organisations.

A show of hands to take the temper of the meeting indicated that a narrow majority of members was interested in extending the scope of the Society and several suggestions were made for carrying this forward, but it was also clear that people did not want to see the core activity of the Society diminished to any extent. There was a lively interest in trying to involve more of the membership in history-based activities and some excellent ideas were aired and discussed. The Committee undertook to identify time-limited projects which members could undertake.

A welcome input to one of the next season's meetings was offered by Rosemary Piercy: the proposal to focus on a topic by means of several of the arts. Rosemary said she would give the idea further thought and then present a more detailed plan to the committee.

**The Society's AGM and election of committee members is on Wednesday 21 November at 7.30pm in the WI Hall.** The business part of the meeting will be followed by some short items and a quiz given by members, and some light refreshments.

**Di Collinson and Barry Old**





As the school holidays begin and the holiday season gets into full swing, it's a busy time for the National Trust rangers. The glorious weather over the last week has certainly been a welcome relief after all the rain – the one downside has been the explosion in the Horse Fly population, which seem to be attacking us at every opportunity at the moment! Still, we can't complain...

On the 14<sup>th</sup> of July The National Trust, in conjunction with Moo Stone Meats at New Barton Farm, held the third annual From Field to Plate event. After a wet week the weather was kind to us with warm sunshine and barely a drop of rain. Tractor rides and butchery demonstrations were especially popular, and the barbecue with delicious burgers and sausages from the farm went down a storm. The National Trust rangers were all on hand to help out on the day, and talk to the public about our activities in South Devon. Children at the event were able to try out some of the activities in our nationwide campaign, 50 Things to Do Before You're 11  $\frac{3}{4}$ . For more information on the campaign, which aims to get more children outdoors and active, please visit the website [www.50things.org.uk](http://www.50things.org.uk).

Last weekend National Trust Intern Tom Allan joined members of the local bird ringing group and went in search of European Storm Petrels at Prawle Point. Although the nearest nesting site for the birds is the Scilly Isles, non-breeding birds are found out to sea along the south Devon coast. 'Stormies' (as they are known to bird watchers) are one of our commonest sea birds, but are relatively rarely seen on shore, as they spend most of their lives out to sea, only coming on to land to breed.

By playing a recording of Storm Petrel calls, however, they can be attracted in to shore and caught in mist nets (very fine mesh nets), allowing them to be ringed and then carefully released. Doing so provides valuable information about their abundance, and presents an opportunity to collect important data on their size, weight and age. The best time to ring the birds is at night, and five hours patiently waiting into the wee small hours (and beyond) produced six Storm Petrels – a respectable number and, for Tom, the first opportunity to handle these fascinating birds.

Finally, we have a new addition to the ranger team. We are pleased to welcome Matt Turley, who is joining us for four weeks as part of his Environmental Science degree at Plymouth University. We hope he enjoys his time with us.

Tom Allan

Countryside Intern

To keep up to date with the South Devon ranger team visit our blog at: [www.ntsouthdevoncountryside.co.uk](http://www.ntsouthdevoncountryside.co.uk)  
Follow us on Twitter: @NTSouthDevon and Facebook: National Trust South Devon Countryside

The National trusts nationwide campaign, 50 Things to Do Before You're 11  $\frac{3}{4}$ . For more information on the campaign, which aims to get more children outdoors and active, please visit the website [www.50things.org.uk](http://www.50things.org.uk).

- |                                      |  |  |
|--------------------------------------|--|--|
| 1. Climb a tree                      | 18. Balance on a fallen tree             | 35. Discover what's in a pond                    |
| 2. Roll down a really big hill       | 19. Swing on a rope swing                | 36. Call an owl                                  |
| 3. Camp out in the wild              | 20. Make a mud slide                     | 37. Check out the crazy creatures in a rock pool |
| 4. Build a den                       | 21. Eat blackberries growing in the wild | 39. Catch a crab                                 |
| 5. Skim a stone                      | 22. Take a look inside a tree            | 40. Go on a nature walk at night                 |
| 6. Run around in the rain            | 23. Visit an island                      | Plant it, grow it, eat it.                       |
| 7. Fly a kite                        | 24. Feel like you are flying in the wind | 42. Go wild swimming                             |
| 8. Catch a fish with a net           | 25. Make a grass trumpet                 | 43. Go rafting                                   |
| 9. Eat an apple straight from a tree | 26. Watch the Sun wake up                | 44. Light a fire without matches                 |
| 10. Play conkers                     | 27. Hunt for fossils and bones           | 45. Find your way with a map and a compass       |
| 11. Throw some snow                  | 28. Climb a huge hill                    | 46. Try bouldering                               |
| 12. Hunt for treasure on the beach   | 29. Get behind a waterfall               | 47. Cook on a campfire                           |
| 13. Make a mud pie                   | 30. Feed a bird from your hand           | 48. Try abseiling                                |
| 14. Dam a stream                     | 31. Hunt for Bugs                        | 49. Find a geocache                              |
| 15. Go sledging                      | 32. Find some frogspawn                  | 50. Canoe down a river                           |
| 16. Bury someone in the sand         | 33. Catch a butterfly in a net           |  |
| 17. Set up a snail race              | 34. Track wild animals                   |  |



Come and have an evening of fun at our

## Curry & Quiz Night

(Choice of 3 curries, including vegetarian option)

**Thursday 9<sup>th</sup> August**

**Ringmore W.I. Hall**

**6.30 pm (meal), 7.30 pm (quiz)**

Bring your own drinks and glasses

**Entry by ticket: £7.50 for adults, £3.50 for children**  
*(Regret that numbers are limited, so book early!)*

from Holywell Stores, Sharon (810179) & Jackie (810520)

Ringmore WI Meeting 20 July 2012



### HOPE ON THE HORIZON

**I**n Togo, one of the smaller countries in Africa, the average wage is \$270 per year; there is one doctor for every 17,000 people, and 12.5% of children will die before the age of 5. Our speaker, Pat Dolby, volunteered to serve as a nurse with Mercy Ships on the Africa Mercy, a ferry which has been completely remodelled as a floating hospital, and which travels to many places in the world where people are living in appalling poverty. On the ship there are 6 operating theatres, and over a typical 2 month period about 650 operations will be performed. There are also 4 wards which can take about 20 people each; their carers have to sleep under the beds. The surgeons concentrate on removing disfigurements which have often caused the patients to be completely ostracised by not only the rest of their village but often by their families as well; consequently they operate on tumours (one person had a 3 ½ kg tumour on his back), cleft palates, cataracts, and in the case of women, debilitating fistulas.

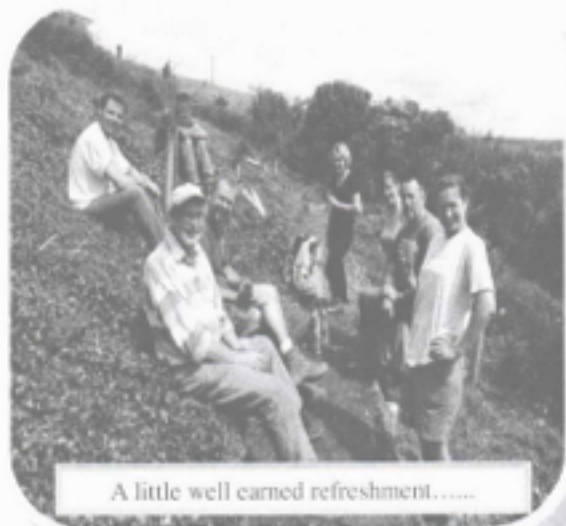
This was a sobering but also a greatly encouraging evening as we heard of the many people whose lives have been completely changed by experienced surgeons and the rest of the crew, all of whom work as volunteers.

Our next meeting will be the ever popular Quiz and Curry night on August 9 at 6.30pm; tickets are available from Holywell Stores, Sharon (810179) and Jackie (810520).

Rosemary Piercy

## Ringmore Orchard

Last month we had the latest update on the Orchard, here are the rest of the lovely photo's of the work so far .



A little well earned refreshment.....



The ladies pause for the lens man.

Saint Peter is sitting at the Pearly Gates when two guys wearing hoodies arrived.

St. Peter looked out through the Gates and said "Wait here. I will be right back.

St. Peter goes over to God's chambers and tells him who is waiting for entrance. God says to Peter: "How many times do I have to tell you, you can't be racist and judgmental here. This is heaven. All are loved. All are brothers. Go back and let them in!"

St. Peter goes back to the Gates, looks around, and lets out a heavy sigh.  
He returns to God's chambers and says

"Well, they're gone."

"The guys wearing hoodies?" asked God.

"No. The Pearly Gates."

and lastly ...

*Attorney:* Doctor, before you performed the autopsy, did you check for a pulse?

*Witness:* No.

*Attorney:* Did you check for blood pressure?

*Witness:* No.

*Attorney:* Did you check for breathing?

*Witness:* No.

*Attorney:* So then, is it possible that the patient was alive when you began the autopsy?

*Witness:* No.

*Attorney:* How can you be so sure, Doctor?

*Witness:* Because his brain was sitting on my desk in a jar.

*Attorney:* I see, but could the patient have still been alive, nevertheless?

*Witness:* Yes, it is possible that he could have been alive and practising law.

*( Yes, this is a repeat from last month.....just to see if you were paying attention and this time with the punch line included!  
Whoops! )*



## South Hams District Council

REGISTER OF ELECTORS 2013 – QUALIFYING DATE 15 OCTOBER 2012  
EARLY PUBLICATION DATE 16 OCTOBER 2012

### DID YOU KNOW?

- The Register of Electors is compiled each year with a qualifying date of the 15 October.
- The Register is usually published on 1 December however in view of the fact that there will be Police and Crime Commissioner Elections held on 15 November 2012, a new register will be published early on 16 October 2012.
- Information is required by law from each household annually – forms will be sent out in Mid-June. If you don't receive one contact South Hams District Council Electoral Registration Office (01803) 861434
- Electors whose details are printed correctly on the form may register using the automated free phone number (if the telephone used has touch-tone dialling), or via the internet – using the security numbers printed on the form.
- Persons who do not register may be liable for a fine of up to £1000
- Only those persons whose names appear on the Register will be entitled to vote
- You have some choice about who can buy your details. The Electoral Registration Officer must publish two registers: the full version and an edited version. If you place a tick in the box on the registration form for exclusion from the edited register, your name and address will only appear on the full register which will only be used for certain lawful purposes, such as elections, law enforcement and checking applications for credit. If you do not place a tick in the box on the registration form your name will also appear on the edited version of the register which anyone can buy – this means anyone can use your details for any purpose.
- Although the qualifying date is 15 October the Register has to be published on 16 October this year so please complete and return your form as soon as you receive it – you can always contact us if your circumstances change.
- Please ensure you return a form before 9 July to avoid receiving a reminder or a personal visit.

ELIZABETH TUCKER  
ELECTORAL ADMINISTRATOR, SOUTH HAMS DISTRICT COUNCIL

## **NEIL CHAPMAN** **GARDEN SERVICES**

FREE ESTIMATES

**GENERAL GARDENING**  
**MOWING - STRIMMING**  
**TREE & HEDGE WORK**

**FIREWOOD**  
**LOGS - WOOD CHIP**  
NETTED OR BY THE LOAD

**FIRE STARTERS**  
NETTED

Minimum of 5 nets or 1 load delivered

Tel: 810016 Mob: 07718 722680

To Advertise here please contact  
[Ringmorenews@btconnect.com](mailto:Ringmorenews@btconnect.com)

Or any of the team :

Jane 811218, Gillian 810303,  
Karen 810382, Lynn 810093, Sally  
810639

Box Advert 1/8 of a Page  
@ £22.00 per year (11 Issues)  
**£2.50 per one off advert**

## RINGMORE PROPERTY & GARDEN MAINTENANCE

Here are just a few of the many jobs we carry out-

Painting and Decorating

- ✓ Fencing and Decking
- ✓ Gardening
- ✓ Grass cutting
- ✓ Strimming
- ✓ Rubbish Clearance
- ✓ Gutter and Facia board cleaning
- ✓ Jet Washing
- ✓ Shed Repairs
- ✓ Glazing
- ✓ Turf Laying
- ✓ Landscaping
- ✓ Garden Furniture repair and painting

Need a job doing?

Phone Mike for a chat:- 01548 810470

## Bigbury Village Shop

*'A Small shop with Lots to Offer'*

Open Monday—Saturday 7am—7pm

Sunday 7.30am—6pm

Warburton's Bread - Milk - Cream

Sandwiches - Pasties - Groceries - Off Licence

Bacon - Ham - Cheese - Local Eggs

Fruit - Veg - Sweets - Chocolate - Coal - Logs

Card Payment Facility - Local Pay Point Agent

ATM Machine

*We are now selling the new 'Health Lottery'*

NEWSPAPER, MILK, BREAD DELIVERIES TO YOUR DOOR

'First thing' Daily £2.00 Delivery Charge Per Week

FISH AND CHIPS

7 Days a Week

5.00 - 8.00 pm

WI-FI AVAILABLE ON PREMISES

TEL: 01548 811150

EMAIL: bigburyvillageshop@hotmail.com

## F. W. Jarvis & Sons Electrical Contractors

Est. 1964

- New Installations & Rewires
- Inspection & Testing
- Electrical Heating Systems
- Lighting

All Work Guaranteed

REGISTERED MEMBER



ECSA



APPROVED  
CONTRACTOR



DOMESTIC  
INSTALLER

Call Michael or Brian  
Tel. 01548 810438

## MJ and JA BUILDERS LTD

All aspects of building work undertaken

New build, Plumbing & heating,

Extensions, Electrics,

Renovations, Ground source heat recovery,

Insurance work, Solar

CORGI and ELECSA Registered

Over 30years experience in the Trade

Telephone for a free estimate on

01548 810633

or

Email: mjandjabuilders@hotmail.co.uk

## MACKGILLS



of MODBURY

4 Church Street, Modbury, Ivybridge, Devon. Tel: 01548 810660



**We are now open 7 days a week  
Serving food from 12 noon 'til 9pm  
Booking is advisable**

*"SEAFOOD AT IT'S VERY BEST, CAUGHT LOCALLY, COOKED SIMPLY  
AND SERVED FOR YOUR ENJOYMENT"*

**"Totally exceptional food and a brilliant atmosphere"**

[bigbury@oystershack.co.uk](mailto:bigbury@oystershack.co.uk)

[www.oystershack.co.uk](http://www.oystershack.co.uk)

**01548 810876**

twitter @theoystershack

**MATTHEW BISSEX ARCHITECTURAL DESIGN LTD**  
**PLANNING AND BUILDING REGULATIONS APPLICATIONS**



*PLANS DRAWN FOR EXTENSIONS  
LOFT CONVERSIONS,  
CONSERVATORIES,  
NEW BUILD HOUSING,  
LISTED BUILDING APPLICATIONS.  
ACCREDITED SAP ASSESSOR*

Visit our website at [www.mbad.co.uk](http://www.mbad.co.uk)

For a free quote on plans for your build project contact  
Matthew on 01761 436861 or mobile 07843 286857

Looking for Solar - try our solar website:

[www.eclipsesolarsouthwest.co.uk](http://www.eclipsesolarsouthwest.co.uk)



**ECLIPSE**  
Solar South West

Looking for solar energy to  
reduce your electric bills?  
For a free quote, contact us on

01761 435770/07843 286857

APPROVED INSTALLER



[www.eclipsesolarsouthwest.co.uk](http://www.eclipsesolarsouthwest.co.uk)

**West-Line Stationers**

For all your office needs

New Products: Promotional Products

[www.actionadverts.com](http://www.actionadverts.com)

Digital Print for Business Cards,  
Letter Heads, NCR Sets & Pads and much more.  
WE ALSO OFFER OFFICE DESIGNS AND LAYOUTS  
WITH TRY BEFORE YOU BUY FOR OFFICE CHAIRS

West-Line Stationers Ltd

Unit 16 Westover Industrial Estate

Ivybridge, Devon PL21 9SZ

Tel: (01752) 893885

Fax: (01752) 690448

E-mail: [sales@west-line.co.uk](mailto:sales@west-line.co.uk)

**G H W Rosevear & Co**

*Chartered Secretaries and  
Incorporated Financial Accountants*



*We pride ourselves  
on a personal,  
efficient and cost  
effective service*

- Accountancy and Taxation
- Probate & Inheritance Tax (IHT)
- Company Secretarial Service
- Property Management

Office Hours: 9<sup>am</sup> - 6<sup>pm</sup>

3 Redbury Court, 32 Church St,  
Modbury, Devon, PL21 0QR

Tel: 01548-831427

Email: [office@holbrookss.com](mailto:office@holbrookss.com)

[www.accountantsouthdevon.co.uk](http://www.accountantsouthdevon.co.uk)

**P.W.S SERVICES**

Tree Felling, Cutting, Trimming  
Tidying and Clearing Away

No Job too Big or too Small

Seasoned or Fresh Cut Logs £60 per load  
Can be Packed and Put Away at a Small  
Charge

Telephone: 01548 810447



**Turtle Farm Produce**

*Opening Times:*

*Weds, Thurs, Fri, Sat, 11.00-6.00*

**New Season Lamb Now In !**

**For Summer Colour, Begonias,  
Geraniums and Fuchsia's. Also  
Hardy Fuchsia's, Dahlias and  
other perennials**

We are in the polytunnel on top of the hill Bowling  
Green Cross. Two ways in: The turning on the bend  
before the golf course or on the Bigbury Village to  
Challaborough/b-on-S road.

Phone evenings: 01548 810923 We can deliver

**TILLY DOWNING** B.Sc. Pod., M.Ch. S.



**STATE REGISTERED CHIROPODIST**

Gentle, safe and  
thorough

The Laurels, Fore Street, Aveton Gifford  
Tel: 01548 550072

*Opposite the Memorial Hall Car Park*



**WINDOW AND DOOR SPECIALIST**

Locks & Mechanisms  
Aluminium & PVC  
Handles & Hinges  
Glass with Condensation

*Free Advice & Quotations*

01803 292990 or 07831 192847



FORMER  
PILKINGTON  
ENGINEER

**Karen Purdy**

Now working from  
Nicholas Hair & Beauty in Modbury  
offering

Dermologica Body Treatments  
Including Enzymatic Mud Wraps  
Mineral Salt Scrubs  
Thermal Stamp Massage  
Hopli Ear Candling  
as well as  
Aromatherapy Massage  
Therapeutic Body Massage  
Indian Head Massage  
Indian Face Massage

Telephone Karen on 01548 810382  
for more information  
web: [www.karenpurdy.co.uk](http://www.karenpurdy.co.uk)  
email: [mail@karenpurdy.co.uk](mailto:mail@karenpurdy.co.uk)

**MICHAEL  
WILSON**

Painter and Decorator  
Established for 20 years

2 Crossways, Ringmore  
01548 810211



**Holiday Let**

**The Beach House**

The Thatches Holiday Village, Modbury

Three bedrooms, two bathrooms

Luxury Accommodation.

Stunning views of Dartmoor

[www.thethatches.co.uk](http://www.thethatches.co.uk)

**Chris Duff: 01548 830346**

**Angela & Peter Phipps:**

**01932 867 090**



**Fine Shine** LTD  
CARPET & UPHOLSTERY



**A COMPLETE CLEANING SERVICE**

Domestic & Commercial  
Fully Trained & Insured

Telephones: office 01548 854313  
mobile 07989 300453 / 07971 247375  
Unit 10, Orchard Industrial Estate, Poplar Drive, Kingsbridge, Devon TQ7 1SF

**Bed and Breakfast  
Ringmore Veau  
Ringmore**

Double Garden Room  
with en-suite shower room

Ringmore Village  
Close to village pub

10 minutes walk to  
Ayrmer Cove and access  
to the South West Coast Path

Telephone Karen or Steve  
01548 810382

web: [www.ringmorevean.co.uk](http://www.ringmorevean.co.uk)  
email: [enquiries@ringmorevean.co.uk](mailto:enquiries@ringmorevean.co.uk)



Computer software problems  
How to use free software

How to make CD/DVD slide shows

Help with photography



Weddings a speciality - a real record of the day

Celebrations or anything - I will photograph it

Call Mike Wynne-Powell 01548 810407



**KINGSBRIDGE  
EYE CARE GROUP**

Nigel Frost Optometrist  
3 Chene Court, Modbury 01548 830944

Clinical Excellence

Full Eye Health Examinations  
Contact Lens Specialists  
Retinal Photography  
Diabetic and Glaucoma Examinations  
OCT Screening Packages  
Luxury Designer Brands

Kingsbridge Eye Care  
1, The Promenade  
Kingsbridge  
01548 836845

Salcombe Eye Care  
84, Fore Street  
Salcombe  
01548 843207

Nigel Frost BSc(Hons) F.C.Optom  
Kathryn Poole BSc(Hons) M.C.Optom



*Julie*  
Fully Qualified  
810634



Mobile  
Ladies & Gents  
Hair-stylist

**PORTUGAL**

2 HOLIDAY APARTMENTS  
Near TAVIRA

TWO BEDROOMS  
SLEEPS 4

AIRCONDITIONED

15 minutes from  
Faro airport

Prices from £190  
Contact 01548 810513

**SHEPPARDS**

Your Local Accountants

**CHARTERED ACCOUNTANTS**

Full Audit, Accountancy and  
Taxation Service  
First Meeting Free  
Free Parking

[www.sheppardsaccountants.co.uk](http://www.sheppardsaccountants.co.uk)  
Email: [accounts@sheppardsaccountants.co.uk](mailto:accounts@sheppardsaccountants.co.uk)

01752 220333

22 The Square, The Millfields  
Plymouth PL21 3JX



(01548 830152)

London House  
Church Street  
Modbury  
S.Devon PL21 00W  
[info@nicholashair.co.uk](mailto:info@nicholashair.co.uk)

Beauty Therapy  
Gel Nails  
Waxing  
Eyelash and Eyebrow  
Treatments  
Dermologica

Skincare Treatments  
Holistic Massage  
Body Firming and  
Reducing Treatments  
St. Tropez Tanning

**Fryer Tuck's  
Take Away**

CHALLABOROUGH BAY  
Tel: 01548 810425

Award-winning  
**FISH & CHIPS**  
Pasties - Pizzas - Pies

Salcombe Dairy Ice Cream

Beach Goods - Wet Suits  
Boards for Hire

Easter to end October  
10.00am - 10.00pm

**KIPS**

PROPERTY MANAGEMENT SERVICES

**ARE YOU A SECOND  
HOME OWNER?**

Do you require a local trustworthy  
individual to manage your  
property for you?

Or maybe you are a local who requires  
a helping hand around the house?

**Services include:**

Laundry and changeovers  
Spring cleans  
Key holding  
Security checks

Liaising with local reliable tradesmen  
in the event of any problems

Welcome packs and/or hampers of local produce  
Assistance in advertising your property

Please call Kate  
M: 07809 736966  
T: 01548 810573

E: [KIPSPROPERTYMANAGEMENT@hotmail.co.uk](mailto:KIPSPROPERTYMANAGEMENT@hotmail.co.uk)



# REFLEXOLOGY

## ON-SITE/ MOBILE SERVICE

DEEP RELAXATION, BACK PAIN, MIGRAINE, SLEEP DISORDERS, DIGESTIVE DISORDERS, HORMONAL IMBALANCES AND STRESS RELATED CONDITIONS.

## SERVANE CAPPS

FULLY QUALIFIED LEVEL 3

REFLEXOLOGIST

MEMBER OF A.O.R.

(01548) 810988

07814464156



ASSOCIATION of  
REFLEXOLOGISTS

## GRASSHOPPER GARDEN SERVICES

FOR ALL YOUR GARDEN MAINTENANCE  
GRASS CUTTING, PRUNING, STRIMMING, HEDGE CUTTING etc

CREATIVE DESIGN AND PLANTING  
OF FLOWER BEDS, PATIO POTS AND CONTAINERS

A high standard of work guaranteed with a personal, reliable,  
tidy and knowledgeable service.

SECURITY CHECKS AND KEY HOLDING SERVICE AVAILABLE FOR  
YOUR HOLIDAY HOUSES AND HOMES



FULLY INSURED  
References Available  
17 Years Horticultural Experience  
Contact : Jeremy or Elaine  
01548 810235

## Holiday Accommodation

Kimberley, Ringmore

Separate Weekly Self Catering

Annex sleeps 4 or

Daily B&B with Private Bathroom.

Delightful edge of village position

Sea and Country Views

Please call on 01548 811115

[www.kimberley-annex.co.uk](http://www.kimberley-annex.co.uk)

# ARBORFOR LIMITED



Professional Tree Surgery Service  
Fully Insured and HSE Compliant  
All aspects of Tree Management  
Wood Chipping Facility  
Mobile Elevated Working Platforms

Houghton Farmhouse, Ringmore, Kingsbridge

Phone /Fax 01548 810 122

Mobile 07785 903 203



# A M KING & SONS

All aspects of building work and  
renovations undertaken.

Bespoke double glazed wooden  
windows and doors

New kitchens and bathrooms

Interior and exterior decoration

01548 810570

[amkingandsons@fsmail.net](mailto:amkingandsons@fsmail.net)

## **J B S**

### John Butler Stonework

#### Quality Stonework

Building & General Maintenance

Free Estimates

Efficient Service

Based in the South Hams

### John Butler Services

#### Plumbing Maintenance and Repairs

Hot Water Systems

Boiler Service and Repairs

Power flushing of central heating systems

Gas, LPG and Oil

Caravan and Holiday Home Safety Checks

Gas Safe Registered

Emergency Call Outs

Tel: 01548 810462/07977 962091



# HOLYWELL STORES &

POST OFFICE  
ST ANN'S CHAPEL

## NEWS RELEASE NATIONAL LOTTERY SOON TO BE AVAILABLE MORE INFO AVAILABLE FROM THE SHOP

Hot Pasties and Home Made Sandwiches  
Local Fresh Bread - Fruit & Veg - Langage Clotted Cream  
Off Licence - Groceries - Frozen Food - Household Goods  
Wi-Fi - Cash Machine - Top Ups - Health Lottery  
Coal - Logs - Kindling - Calor Gas - Charcoal

### SHOP OPEN

MONDAY - SATURDAY 7am - 8pm  
(July & August)

SUNDAY 8am - 5pm

### POST OFFICE

MONDAY - FRIDAY 9am - 1pm

Tel: 01548810308 E:mail: holywellstores@msn.com  
[www.2day.ws/holywellstores](http://www.2day.ws/holywellstores)

FREE CAR PARKING BEHIND THE SHOP

**SHOP LOCALLY & SUPPORT THE LOCAL COMMUNITY**



## THE JOURNEY'S END INN

### OPENING TIMES

Monday:	Lunch and Dinner	12.00-3.00	6.00-Close
Tuesday:	Lunch and Dinner	12.00-3.00	6.00-Close
Wednesday:	Lunch and Dinner	12.00-3.00	6.00-Close
Thursday:	Lunch and Dinner	12.00-3.00	6.00-Close
Friday:	Lunch and Dinner	12.00-3.00	6.00-Close
Saturday:	Lunch and Dinner	Open all day	
Sunday:	Lunch only	Open all day	

01548 810205    [thejourneysend@btinternet.com](mailto:thejourneysend@btinternet.com)

### Thursday - Quiz

Sunday - Traditional Lunch - including roast - bookings advisable

Friday - Curry + Evening Bar Menu

### Evening Bar Menu:

Grilled Gammon Steak, Fried Egg, Chips	£11.50
Brie, Herb Omelette, Green Salad, Sauté Potatoes	£8.50
Honey Pork Sausages, Onion Gravy, Mash	£9.50
*Marridge Farm Beef Burger, Gruyere Cheese, American Slaw, Chips	£10.95
Bowl of Chips	£2.95

### Sunday Lunch:

*Curried Red Lentil, Chickpea, Spinach Soup	£6.00
*Wok Seared 'River Teign' Mussels, Spring Onion, Thai Broth	£8.95/£14.95
*Salt/Pepper Calamari, Garlic Mayonnaise	£8.95
Confit Duck leg, Marinated Fig, Cider Reduction, Gem Lettuce, Hummus	£7.50
Cold Smoked Salmon, Poached Egg, Warm 'Clonakilty' Black Pudding	£6.50

*Wild Garlic, Sweet Pea, 'Cashel' Blue Cheese Risotto	£11.50
*Roast 'Marridge Farm' Beef Sirloin, Yorkshire Pudding, Horseradish Cream, Picked Watercress	£14.75
*Roast Cornfed Chicken, Cranberry Compote, Lemon Thyme, Bread Sauce	£13.75
*12 Hour slow roast Pork shoulder, crushed Bramley Apple, Cider Gravy	£13.75
* 'Doombar' Battered Haddock Fillets, Chips, Crushed Peas	£11.50
*Sunday Roast Bap	£8.50

(Some of Our Dishes May Contain Nuts, or Shot)

[ All dishes marked \* are Grown/Caught within 30 miles of the J.E.]

FOLK EVENING Wednesday 1 August  
Real Ale Festival last weekend in September

Conor and Tracy