

# RINGMORE

## PARISH NEWSLETTER

EDITOR FOR THE LAST TIME: GEOF DYKES

SEPTEMBER 2006



### MOBILE LIBRARY

Friday 11th & 25th	
Ringmore Church	2.55 - 3.15
Challaborough	3.35 - 3.35
St Ann's Chapel	2.30 - 2.45
Kingston Fire Station	4.00 - 4.30

### DEADLINE

Thursday  
28th

### ISSUE NUMBER

253

### RAINFALL

 Robbie McCarthy

Last Month	2 7/8"
Ten Year Average	2 1/2"
Ten Year High	2003 4 1/4"
Ten Year Low	1996 1/4"

*The weather was kind to our two big Summer events.*

*The WI Fête enjoyed a splendid day and a good attendance combined to provide the ladies with a record sum, exceeding £1000. Similarly, the Church Fête surpassed previous successes with a day enjoyed by all who attended, raising more than £2000.*

*The Journey's End is buzzing again which is good to see. Locals have returned to reclaim their place at the bar. Juliet and Paul (good luck for 4th) have written about their plans for the Autumn.*

*It is pleasing to report that John Brunel Cohen is recovering well from a recent heart attack and that Dennis Collinson is singing, 'I can see clearly now' after attention to a cataract. We wish them a speedy return to rude health.*

*September is the time of year when familiar activities return to the calendar. The Thursday Quiz at the JE will recommence on 21st - the Short Mat Bowls Club will roll its first wood of the season on the first Monday in October - the JE will host a Beer Festival in early October and the Old Chapel Inn will hold an Oktoberfest - Bike, Ride and Stride will be in September - Robbie McCarthy is our Gazette correspondent - St Lukes are having a Coffee Morning at the Korniloff - the WI is holding the World's Largest Coffee Morning in the WI Hall (bit of a squeeze) - the Yew tree has a girth of thirteen feet.*

*Our Postman, Frank Dowling would like it known that due to a change in work plans at the Kingsbridge Sorting Office, the delivery, on a busy day, could be up to one hour later than at present. Don't shoot the messenger.*

*And finally . . . . .*

## The Newsletter

The motto of the *New York Times* is, 'All the news that's fit to print'. To that could be added a paraphrase of Donald Rumsfeld's observation, '... that we know about'. Thank you to everyone who has highlighted an error; there have been a few and all have occurred in changes made after the proofreader had gone to bed.

We have enjoyed producing the Newsletter. We shall miss the panic of meeting deadlines, the noise and heat of the presses, cries of 'Hold the Front Page' and the kind remarks from those who have bothered to read it.

We wish Debbie and Emily well and ask

Please send items for inclusion in the Newsletter to:

The Editors

Ringmore Parish Newsletter,  
Mayfield, Ringmore, TQ7 4HW

or put them in the green letter box at Mayfield

email: [news@ringmore.net](mailto:news@ringmore.net)

Tel: Debbie 810575 Emily 811210

## DIARY FOR THE MONTH

\* MONDAY: Short Mat Bowls Parish Room 7.30pm  
\* TUESDAY: Table Tennis Parish Room 7.30pm  
\* THURSDAY: Quiz Night Journey's End 9.00pm

- 4th Celebratory drink with Paul & Juliet at JE 6.00pm
- 6th Royal British Legion Old Chapel Inn 7.30pm
- 9th Bike, Ride, Stride All Hallows 11.00am
- 12th WI Trip on Rivermaid
- 14th WI Meeting followed by talk WI Hall 8.00pm
- 19th NO Parish Council meeting
- \* 21st First Quiz of the season JE 9.00pm
- 25th Town Quiz answers to Ringmore Vean
- 28th Quiz JE 9.00pm
- 29th World's Largest Coffee Morning WI Hall 10.30am
- October
- \* 2nd First Short Mat Bowls Parish Room 7.30pm
- 4th St Luke's Coffee Morning Korniloff 10.30am



## HARFORD CARS HYBRID

Quality Cars and 4x4s  
to suit all pockets

**RING FOR A CHAT**

Guy Lewis  
07830 326607



## BARDENS GARAGE

**BIGBURY**

Servicing ~ MOT Welding  
Mechanical Repairs  
Accident Repairs

Bodywork ~ Repairs

Breakdown

Accident recovery available

01548 Proprietor: 07887  
810627 E Nicklen 610247

## SHEPPARDS

Your Local Accountants

**CHARTERED ACCOUNTANTS**

Full Audit, Accountancy and  
Taxation Service  
Free Final Meeting  
Free Parking

www.sheppardaccountants.co.uk  
Email: accounts@sheppardaccountants.co.uk

**01752 220333**

8 HQ, 237 Union Street  
Plymouth PL1 3HQ

## STONEWORK

**GARDEN FEATURES  
AND  
WALLING**

**RENOVATION - REPOINTING - REPAIRS**

ALAN ROLFE

01548 810776 OR 07837 472069

## ALGARVE



### Praia da Luz

**HOLIDAY COTTAGE - SLEEPS 6**  
50 METRES FROM BEACH  
LARGE SUN TERRACE

Contacts: www.lms-eu.com/86\_lbc.htm  
01548 810346 email: info@lms-eu.com

## FINE SHINE LTD VALETING

**CAR - BOAT - CARAVAN**

WORKSHOP OR MOBILE SERVICE

WHY NOT LEAVE YOUR CAR WITH US WHILE YOU SHOP OR WORK

www.Fineshine.co.uk

OFFICE 01548 854313 MOBILE 07989300453 OR 07971247375  
UNIT 10, ORCHARD INDUSTRIAL ESTATE, POPLAR DRIVE, KINGSBRIDGE, TQ7 1SF

## DEVONSHIRE FINE ART

Antique Watercolours, Oil Paintings,  
Drawings, Maps and Prints.  
Quality Picture Framing Service.

9 Church Street, Modbury,  
Devon PL21 0QW  
Telephone/Fax: (01548) 830872

Email: info@antique-fine-art.com  
Website: antique-fine-art.com



# HOLYWELL STORES & POST OFFICE

01548 810308 ST ANN'S CHAPEL 01548 810308

**SURF THE WEB £1.00 FOR 30 MINUTES**  
**DVD RENTAL - £2.75**

## SHOP

MONDAY TO SATURDAY  
7.00AM - 6.00PM

SUNDAY 8.00AM - 5.00PM

CREDIT AND DEBIT CARDS ACCEPTED  
NO MINIMUM FEE

## POST OFFICE

MONDAY TO FRIDAY  
9.00AM - 1.00PM

CASH MACHINE &  
MOBILE PHONE ELECTRONIC TOP-UP

Wide Range of Local Cheeses  
(incl Sharpham and local Goat & Sheep cheeses)  
Fresh Bread & Pasties  
Fruit & Veg - Frozen Foods - Groceries  
Aune Valley Meat - Heron Valley Juices & Cider  
Langage Farm Cream & Ice Cream  
Coal - Logs - Charcoal - Calor Gas  
Newspapers & Magazines -  
Clive's Organic Vegetarian Pies  
Hog's Bottom Chutneys & Jams  
Off Licence - wide selection of Wine & Beers  
Mike's Manuka Smoked Salmon & Paté  
Local Agent for Devon Air Ambulance Lottery

# NEWS FROM ALL HALLOWS

## LOCAL CHURCH SERVICES IN SEPTEMBER

Date	Bigbury	Kingston	Ringmore
Sep 3 <sup>rd</sup>	11.00 a.m. Family Communion with Laying on of Hands for Healing	9.00 a.m. BCP Communion	11.00 a.m. Family Service
10 <sup>th</sup>	11.00 a.m. Family Service	6.00 p.m. Evening Prayer	9.00 a.m. BCP Spoken Communion
17 <sup>th</sup>	9.00 a.m. BCP Communion	11.00 a.m. Family Service with Childrens Club <i>With John Kendal, Methodist Minister from Kingsbridge</i>	6.00 p.m. Harvest Festival
20 <sup>th</sup>	2.30 p.m. Korniloff Communion		4.30 p.m. Communion
24 <sup>th</sup>	11.00 a.m. Family Communion	6.00 p.m. BCP Evening Prayer	9.00 a.m. BCP Communion
Oct 1 <sup>st</sup>	11.00 a.m. Family Service	9.00 a.m. Communion	11.00 a.m. Family Service

### Sticks and Stones May Break My Bones But Words Will Never Hurt Me

I expect many of you will have heard my response to this old saying: "Tosh". Words can hurt and sometimes, the lack of them. Recently Pam and I went on a Christian Conference. It was amazing to be with 5,000 people in the Evening Service. There were around 11,000 people at the event. The speakers gave some excellent teaching, and one of them also gave advice on the best way never to forget your wedding anniversary. He said that all you have to do is forget the first one during your marriage. If you do that you'll never forget another!

A Church Minister's wife I know has indicated that 60<sup>th</sup> birthdays are not for her; instead she will celebrate being two thirty-year olds. The other option that I might suggest is that she moves to the Celsius scale and recognises that 60 Fahrenheit translates to 16! Needless to say the correct response is, "Surely you're not sixty, you don't look it"

Similar responses can cause offence in relation to hair and weight. Recently I was thrilled when someone said "You've lost a lot of weight haven't you?" There followed two worrying responses. "That's what they said to me, and then diagnosed diabetes", and then the dangerous, "What do you think I weigh", the response, a stone above the questioners weight, was unintentionally hurtful. As also was the long pause when a lady asked if we liked her new hairstyle. Telling the truth is sometimes difficult.

We all carry baggage of one sort or another through our lives, and not all of it the basic essentials in plastic bags that the security staff can see as we have boarded planes in the last few weeks. What is essential? What is travelling light? The story of the rich man who met his guardian angel and pleaded to take just three suitcases to heaven makes the point. He cashed in all his investments, sold his various home and cars. Then he purchased gold with the money and had it made into suitcase-sized gold blocks. As he staggered, perspiring, through the pearly gates an onlooking angel turned to his friend saying, "I thought they were not allowed to bring anything except themselves". The angel's friend explained the concession, and got the response "Well why has he come with three paving slabs?"

So travel light folks, and lighten the journey of others with kind, but truthful words.

*John Elliott, Resident Minister (810565)*

# W K BUTLER SERVICES

City & Guilds  
Qualified Plumber

for all your  
DOMESTIC PLUMBING  
FREE ESTIMATES  
CLEAN EFFICIENT  
SERVICE  
EXTREMELY  
COMPETITIVE RATES  
TEL: 07730 506382  
01548 810462

# PORTUGAL

HOLIDAY APARTMENT

near TAVIRA

TWO BEDROOMS

SLEEPS 4

45 minutes from  
Faro airport

Cheap flights from Bristol

Prices from £170

Contact: 01548 810511  
<http://stephaniegreysdeon.tripod.com>

# Nigel Walton

Computers built to exacting requirements  
Almost trade prices  
Upgrades, Processors, Hard Disks and  
Software solutions  
No job too small

Lousown  
Folly Hill  
Bigbury-on-Sea Tel: 01548 810970



# TILLY DOWNING B.Sc. Pod., M.Ch. S.

STATE REGISTERED CHIROPODIST

2005 Charges for full treatment  
Surgery £14  
Home Visit £17

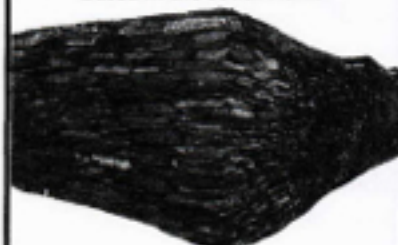
The Laurels, Fore Street, Aveton Gifford  
Tel: 01548 550072

Opposite the Memorial Hall Car Park



John Butler  
Stonework **JBS**  
Quality Stonework  
Building & General Maintenance

Free Estimates  
Efficient Service  
Based in the South Hams



Mob: 07977 962091

WINDOW AND DOOR  
SPECIALIST



Locks & Mechanisms  
Aluminium & PVC  
Handles & Hinges

Glass with Condensation  
Free Advice & Quotations  
01803 292990 or 07831 192847  
FORMER PILKINGTON ENGINEER

*Julie*  
Fully Qualified  
810634



Mobile  
Ladies & Gents  
Hair-stylist



EXECUTIVE MANUSCRIPT ADMINISTRATION SERVICES

Digital transcription, secretarial service & billing work

**Emma Cowan**  
Administrator

Contact me for further details & prices of  
secretarial & administrative services offered

Tel: 01548 560670  
Email: [emma@emaadmin.plus.com](mailto:emma@emaadmin.plus.com)

> | CAVE |  
D I R E C T |  
SPECIALISTS IN  
BELGIAN BEERS

150 WORLD BEERS  
AVAILABLE FOR  
HOME DELIVERY

[www.specialtybeermerchants.com](http://www.specialtybeermerchants.com)

FULL DETAILS ON

TRADE ENQUIRIES  
Tel: 01548 810848



**NEIL CHAPMAN**  
GARDEN SERVICES

FREE ESTIMATES

GENERAL GARDENING  
MOWING - STRIMMING  
TREE & HEDGE WORK

FIREWOOD  
LOGS - WOOD CHIP  
NETTED OR BY THE LOAD

FIRE STARTERS  
NETTED

Minimum of 5 nets or 1 load delivered  
Tel: 810016 Mob: 07718 722680

FOR 'REAL' CHEESE & WINE

**MACKGILL'S** + Handcut Farmhouse English &  
Continental Cheeses

- + Home-cooked Ham & Salamis
- + Home-cooked Pies & Cakes etc.
- + Wine, Beer, Sherry & Cider ...  
and much more



Telephone Enquiries Welcome

4 Church Street, Modbury, Devon PL21 0QW  
Telephone: Modbury (01548) 830860

# Journey's End

This past Friday marked our 5th week as the new Landlords of the Journey's End Inn. Juliet and I want you to know how wonderful you have all been to us. Not only by coming in and saying 'Hello' but also by becoming our new friends! The JE is an old girl and Jules and I will be giving her a new face over the next few months but we will never forget that even though it is where we live . . . it is your 'living room'!

You have said how wonderful it has been to hear laughter coming from the main lounge (not to mention the Dining Room) again. The fact is that every day it has been

#### To our staff:

Without all of you.. well... Jules and I are in your debt. You showed us the ropes, supported us with wonderful service, compassion, understanding, and talent.

To Byron, Bobbi, Scott, Sarah, Emily, John, Mi, Lynda, and James thank you for everything! Actually we both wish you would give up school and stay here full time!

you that have done that . . . Jules and I are just plain happy to be here and you have made us feel so welcome that it is almost as if we have always been here. For that alone, we are forever grateful and will do everything we can to remain a fixture here in Ringmore. You are our friends and family!

### Some upcoming events for this autumn

We are working now on getting a number of events going for this Autumn. They are still in the works at the time of writing this. But here is a very quick schedule, which is in no means inclusive.

September 4th: Paul and Jules get hitched in Totnes! Come in for a drink with us after 6.00pm

September 21st: Quiz nights start up again and will be held every Thursday.

October 6th through 8th: The 2006 Journey's End Inn Beer Festival (in partnership with the Beer Cellar)

October 31: Halloween... be scary, be bold, be risky, just have fun!



Tel 01548 810205

Closed on Monday

Tuesday - Saturday

Lunchtime: 12.00pm - 3.00pm

Food: 12.30pm - 2.00pm

Evening: 6.00pm - 11.00pm

Food: 7.00pm - 9.30pm

Sunday

Noon - 3.00pm

Food: 12.30pm - 2.00pm

6.00pm - 10.30pm

Pizzas only: 7.00pm - 9.00pm

## MILLENNIUM HEDGE

Many thanks to to Guy, David Barnes, Frank, Phill, Chocoy and Archie for helping with the ragwort pulling on the Millennium hedge and Ann & John Bracey for last minute weeding. Andrew and Pete Bracey managed the climb up the hill in time to see us come down!

## Trees

At some point towards the end of the growing season, trees and hedges become news.

Landowners have legal responsibilities to maintain them according to regulations. They must trim them so that free passage is possible on the highway, ie. people are not pushed into the middle of the road by a hedge and high lorries can pass under trees. A clearance height of seventeen feet for trees, is recommended.

Two National Trust volunteers also came to clear the rubbish and take the ragwort away for burning for which we are very grateful, as it is a long walk from the hedge fully loaded.

The hedge, which was planted in 2000 by villagers, is doing extremely well and will be ready for laying in another 6 years. The mature hedge will then be clearly visible from the sitting area in Smugglers Lane.

Alan McCarthy



WOMEN IN THE COMMUNITY

The Annual WI Fête is always a popular event and this year was no exception. Lovely weather, great food, lovely stalls - everything in the garden was lovely - oh, and lovely raffles, but it's time to think of next year's now.

Before that, though, September's meeting will be a talk by Mike Spry of the Shekinah Mission on 'Working with the Homeless' on 14th. This should be a 'wake-up call' for many of us to support this worthwhile charity.

Naomi Warne

## Ivybridge Flower Club

After a break of eight years the club staged an event entitled a Summer Wedding.

An entry from Avril Eaves was judged the People's Choice, winning one of the three trophies presented.

Well done, Avril.



## RINGMORE W I

The WI is planning an evening Estuary cruise on the Rivermaid, on Tuesday 12th September, leaving the Boatyard Quay at 6.40pm, returning at about 8.30pm. The cost is £8.00 per person. Light refreshments are available on board but you can bring a picnic and wine if you prefer.

If you would like to join us, ring Pat King 810359 or Jane Baker 811115 by 18th August.

Transport will not be provided but we can probably arrange lifts if necessary.

AS SEEN ON TV  
**JEAN MOORE**  
MGCP - ITEC - CBTAC - ASIA - BAAB

**Aromatherapy \* Bowen Technique \* Reflexology  
Hopi Ear Candle Therapy**

**PAIN RELIEF**  
from

Sciatic Frozen Shoulder Back Pain  
Menopause Insomnia Arthritis ME

Call me for a discussion  
01548 810597 or 01752 863528

**NIGEL FROST**

B.Sc.(Hons)

Optometrist

FC Optom

Chene Court, Modbury  
next to car park

01548 830944

Open Weekdays and Saturday Morning  
Contact Lenses, Spectacles, Accessories  
Complete Eye Examination

**A M KING & SONS**

Registered Builders

Internal & External Decorations

uPVC Windows & Fascias

Extensions/Conversions

New Kitchen  
or Bathroom

810570



Residential  
Care Home

Prop: Gina & Gordon Phillips

Retirement  
Hotel

**KORNILOFF**  
Overlooking Burgh Island

A Family-run Home 24 hour Care NVQ trained staff  
Large Single, Double or Twin rooms by choice. Some en-suite  
We welcome clients who just require serviced  
accommodation, with sea views  
Your Dignity and Privacy is paramount  
Our own Minibus for outings  
Registered by Commission for Social Care Inspection  
Warren Road, Bigbury-on-Sea, Devon TQ7 4AZ  
Telephone: 01548 810222

The  
**Oyster  
Shack**



Stakes Hill, Bigbury  
Tel: 01548 810876

**Open All Year**

Tuesday - Sunday  
Lunchtime

Now Open Evenings  
Extensive Seafood Menu  
as featured in  
The Good Food Guide

Booking advisable  
www.oystershack.co.uk

**FINE SHINE LTD**

**CARPETS - UPHOLSTERY - ORIENTAL RUGS**

Collection for workshop cleaning  
Domestic & Commercial

www.Fineshine.co.uk

OFFICE 01548 854313 MOBILE 07989300453 OR 07971247375  
UNIT 10, ORCHARD INDUSTRIAL ESTATE, POPLAR DRIVE, KINGSBRIDGE, TQ7 1BF



GARDEN MACHINERY LTD  
Avon Bridge Aveton Gifford

550880

**SALES  
SERVICE  
SPARES**

For all your Garden Equipment  
Give us a call

**QUALITY MACHINERY AT THE RIGHT PRICE**

*Heritage*

*Tree Surgery*

*& Gardening*

Gary Godfrey

Qualified Tree Surgeon

Professional Tree Surgery and Garden Maintenance

Wood Chip & Logs available

Garden Clearance & Maintenance

Grass & Hedge Cutting

Free Estimate 01752 690869

Mobile 07989 589730

Wedding Bouquets



Funeral Tributes

"Rosemary"



Flowers  
for

all occasions

1 Broad Street  
Modbury  
Tel 01548 830048

**Nicholas**  
HAIR & BEAUTY

Tel: 01548 830152

Ladies' & Men's Salon

Hairdressing  
Beauty Treatment  
Aromatherapy,  
Massage, Reflexology

Salon open:  
Tuesday - Saturday 9.00am - 6.00pm  
Early morning and late night  
appointments can be accepted

We specialise in long hair for  
weddings and other special occasions

London House  
Church Street  
Modbury, South Devon

**Eryer Tuck's**  
Take Away

CHALLABOROUGH BAY  
Tel: 01548 810425

Award-winning

**FISH & CHIPS**

Pasties - Pizzas - Pies

Salcombe Dairy Ice Cream

Beach Goods - Wet Suits  
Boards for Hire

Easter to end October  
10.00am - 10.00pm



**Jinny McCabe**  
Wedding Florist

Bouquets

Church & Marquee  
Decoration

Foxhole  
Dukes Mill, Bigbury  
Kingsbridge, TQ7 4AN  
Tel: 01548 810538

## YEW OLD LADY

On a beautiful, sunny afternoon the All Hallows cockerel weather vane, which had recently been restored, watched the measuring and aging of the yew tree in the churchyard. This event, hosted by the Ringmore Historical Society, attracted over 90 people both villagers and visitors. The names of all those present will be entered into a special book which will be produced to commemorate this event. All the children received an 'ABC for Ringmore' as a token to mark the measuring



Careful measurement

The yew in All Hallows churchyard is an English Yew and yews have had connections with both pagan and religious rites for many centuries. The wood is extremely hard and it is said that it lasts



Ladies of Ringmore enjoying the afternoon sunshine



Imperial on the left, metric on the right

longer than iron. A comparatively recent use for yew is the distillation of the alkaloid taxol which is useful in the treatment of some cancers. However, the yew's most impressive characteristic is its longevity. The tree was measured by the children present at three different points around the trunk and after careful and conservative calculations the tree was estimated to be 520 years old. This puts this tree into the 'Ancient Yew' category. It was thought,



Nigel wonders where he left his hat - David is saying nothing.

however, to be considerably older than that given the harsh south westerlies on this exposed site which could mean growth would be slower than normal.

The organiser, Dr Di Collinson, was very pleased to see so many people at this event which was part of the ongoing millennium celebrations.

Yews throughout the country have been measured and their details recorded for posterity. Over half the churches in England and Wales planted young yew trees to mark the millennium.

Robbie McCarthy



Some more folk who enjoyed the whole ceremony

## St Luke's Hospice

Plymouth

### Coffee Morning

Korniloff, Warren Road, Bigbury-on-Sea

Wednesday 4th October  
10.30 - Noon

This is early notice of this event which is being held instead of our annual house-to-house collection. We would value your support by coming (with a friend if possible), by making something for the Cake Stall, by providing a Raffle Prize or giving money. Either Gill Tomlin, 810028 or I, would be happy to receive any such offerings.

Thank you so much. We hope to be able to send a generous amount to St Luke's, to encourage their good work for very sick people and their families.

Drina Williams 810405

**MUSIC**  
at  
**THE PADDOCK**  
with  
**FRANK & DRINA**  
2006  
October 9th  
November 13th  
December 4th  
2007  
January 15th  
February 12th  
March 12th

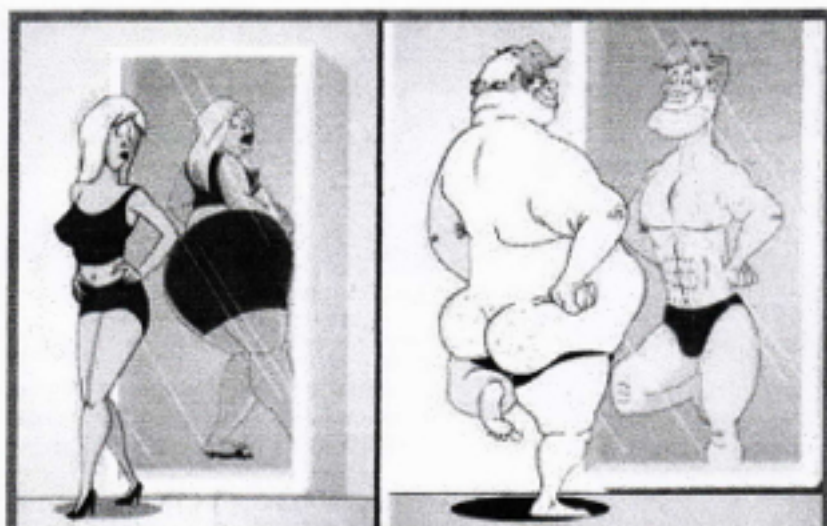
## URGENTLY NEEDED

Local residents with the following qualities:

- Superior hand/eye co-ordination
- A devious turn of mind
- Strategic thinking
- Ruthless implementers
- Thinking in curves, not straight lines
- Free Monday between 7.30 & 9.30pm
- Liquid assets of at least £1 per week

If you have the necessary qualities we will be prepared to train you for a glorious, rewarding future in a cutting edge sport where age is no barrier.

Short Mat Bowls can be more fun than you think. Apply now to Alan (810738) or turn up at the first meet of the season on Monday 2nd October in the Parish Room.



THERE ARE NONE SO BLIND AS . . .

## The Gazette

As you may have noticed, I am now the Ringmore Village Correspondent for the Kingsbridge and Salcombe Gazette. If there is anything you would like mentioned or events advertised please let me know. I will try to keep up to date with everything that is going on but I may need to be reminded from time to time.

Robbie McCarthy  
810738

## 1995 - 2006

What makes a successful Newsletter? Is it startling news? Scintillating content? Presentation? Low expectations? Who knows?

Whatever it is, it seems to have worked. However it would not have worked without support from a large number of folks and huge thanks are due to them. The regular contributors, who have provided the basic information which joins one Newsletter to the next; The Revd John Elliott, the WI, the Journey's End, the Parish Council. Also the occasional entries from the Royal British Legion and the Ringmore Historical Society, which provide some variety. The even more infrequent contribution from individuals, covering all activities under the sun. The hardy folk who have delivered copies in all weathers have been a godsend . . . Pam Denis Noel, Linda Crookes, Jem Deverson, Phill Errett, Frank Williams and the deputies, Sandi Hammond, Gillian Parkin and Robbie and Alan McCarthy and of course their predecessors, some of whom still live in the village and some who read the Newsletter with a gallic shrug. Last but not far from least, Stan Brunskill. Stan has been involved with the Newsletter as Editor and distributor since he started it 21 years ago. Thanks to the dozens of you who do Enigma and who are represented by the half-dozen who submit their answers.

Thank you to everyone who has helped during our involvement. I first helped with the June '95 edition (seven editions) and became a joint editor in January 1996 (twenty-one editions). In October 1997 I was left to my own devices, which is 108 editions ago. During the whole of this time I would not have survived without the invaluable help and support of the Proofreader.

When we first became involved it was 'cut and paste'. The developing technology

It's all happening at  
**The Old Chapel Inn**  
this autumn!

**Boozy Tuesday**  
finds a new home-from Tuesday, 5th September- if you dine in the restaurant after 7.00pm-the house wine is on us!  
Every Tuesday - booking essential

**Saturday 9<sup>th</sup> September**  
An evening with Helen Gillespie Peck-  
winemaker & author of  
'Winewoman@Bergerac.France'  
A gastronomic feast & wine-tasting. Learn more about this fascinating region of France & its wines  
Limited space-booking essential  
4 course dinner & 5 wines £29.95 inclusive

Coming soon  
**Oktoberfest**  
The First O.C.I Beer Festival  
20th, 21st & 22nd October

Come and try the Best of the West  
More than 20 beers & ciders from Devon, Cornwall & Somerset  
Live music-bar food & great beer!

The Old Chapel Inn  
01548 810241  
[www.oldchapelinn.com](http://www.oldchapelinn.com)

**THE OLD CHAPEL INN**  
COUNTRY INN - DINING - ACCOMMODATION

Open:

11.00am - 3.00pm

6.00pm - 11.00pm

Bar Food and Daily Specials

**Wine & Dine in Style**  
In our à la carte Restaurant

90 wines from around the world  
Real food for children

[www.oldchapelinn.com](http://www.oldchapelinn.com)

01548 810241

was a great boon to us, as it will be to our successors but in essence it is still 'cut and paste' - it is not possible to layout the Newsletter until all the items have been received. So, give Debbie and Emily a chance and adhere to the deadline. A new editor is long overdue. The Newsletter will change and go from strength to strength.

We are looking forward to the next edition.  
Ed & Proo



**Debbie and Emily**

to whom the batons have been passed

**Ringmore LEGION**  
The Bigbury, Ringmore and Kingston Branch thank Geof very much for all his help and support during his tenure as Editor of the Ringmore Newsletter. His generosity will be much missed. We wish Geof and Anne good luck and much happiness in their new life.

## New Address

Mickey Trant  
48 Grosvenor Court  
Western Road  
Ivybridge PL21 9GH  
Tel: 01752 690321



# RINGMORE PARISH COUNCIL

Meeting Tuesday 22nd August 2006 at 7.00pm

Present: Seven councillors, Mrs M Wood - clerk, Mrs J Guy - tree warden, Mr W Mumford, Devon County Councillor, Miss A Bloomer and Mr J Baverstock, Kingsbridge & Salcombe Area Partnership (KSAP) and one member of the public. Apologies: Cllr B Carson and Mr David Young

Mr Mumford explained that Devon County Council have awarded each parish the sum of £500, to be used by April 2007, for the benefit of the parish.

Cllr. Parkin was concerned over the state of the over-grown verges which were making the roads rather narrow. Mr Mumford said he would contact Devon Highways at Ivybridge about them.

There was then a discussion about the speed of the traffic down Challaborough Hill. Councillors will be canvassing opinions from residents as to traffic calming measures being proposed.

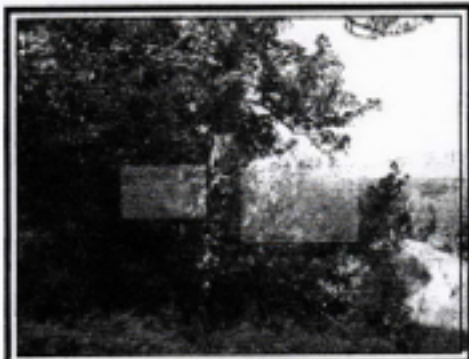
## KSAP -

Mr Baverstock and Miss Bloomer gave a brief description of KSAP and how, if we worked together, it could be useful in aiding both council and community projects.

## Buoys

The buoys in the sea at Challaborough have still not been lined up correctly. Mr Radford, the Parkdean General Manager will deal with this matter.

## DON'T SPOIL THE VIEW



The Parish Council will seek permission to remove some of the growth in the lighter shaded rectangles of the picture, to improve the view of Ayrmer Cove.

## Trees

The six week notification period for the undertaking of work on the trees at End Bohemia Cottage has elapsed.

## Finance

Hedge Trimmer attachment £180  
Skip invoice £385.92 This is the initial cost but some refunds are expected.

## Refuse Collection

Concern has been expressed a few times over the once-a-fortnight collection of waste, particularly in the hot weather, from the brown bins and this was brought to our attention again by the member of the public attending the meeting. Bio-degradable bags (not recyclable bags as stated last month - my apologies) should be available in September, but at a cost of £3.50 for 50.

## Next meeting

Please note - Tuesday 24th October 2006 at 7.00pm.

Thelma Mann

## 30mph?

The question of traffic speeding through the village is on the agenda. Meetings with the relevant authority have taken place to determine what solutions are available. Despite the best intentions on both sides the options are limited. Concerns about speed are greater, perhaps, in Challaborough because of the holiday population. There is the possibility of a 30mph limit being installed, starting near the Bigbury Bay Holiday Park and this could be extended to include the whole of Ringmore.

Please consider your view on this topic. Decide whether a) you think a limit is necessary b) whether you are prepared to accept the 'environmental damage' caused by numerous traffic signs c) whether you are prepared for the Parish Council to pay up to £7,000 which would be reduced by money from other sources.

If you have a view, please talk to a Parish Councillor who will bring your opinion to the October Council meeting. Better still, come along yourself.

Once the views of all involved have been distilled, prices determined more exactly and timescales agreed, the Council will hold a public debate and an open meeting, before reaching a conclusion.

Geof Dykes  
Chairman  
Ringmore PC.

A belated  
**WELCOME**  
to  
Sean & Sharon  
Jones  
of  
Challaborough  
who came to the village  
too long ago but were  
not mentioned in the  
Newsletter



## TRADING STANDARDS WARNING TELEPHONE SCAM

A company, Parcel Delivery Service (PDS) is posting cards through letterboxes claiming that it cannot deliver a parcel and asking the recipient to call them.

### DO NOT CALL THEM

The number given is 0906 6611911. This is a premium rate number run by a scam originating in Belize. If you call the number, you will hear a recorded message, by which time you will have already incurred a bill of £15.

If you do receive a card through the door with these details, contact Royal Mail Fraud on 02072 396655 or contact the Independent Committee for the Supervision of Standards of Telephone Information Services at [www.icstis.org.uk](http://www.icstis.org.uk). Alternatively, you can call your local Trading Standards Office at Devon County Council, 08454 040506

## Britannia



## College

Sunday 15th October sees another trip to Britannia Royal Naval College which is open to all Ringmore residents, their families and friends. The tour will be guided by your friendly, knowledgeable, local guides and will last about 2½ hours, with refreshment. The cost is £9.00 per person. The proceeds will be donated to the Royal British Legion Poppy Appeal. Please contact Phill Errett (810547) or Robbie McCarthy (810738) for further details as places will be limited. This is a fabulous place to spend the afternoon and tours have been thoroughly recommended. Do join us.

> **C A V E**  
**D I R E C T** SPECIALISTS IN  
BELGIAN BEERS

[www.specialitybeermerchants.com](http://www.specialitybeermerchants.com)

Please note that we have a new website  
with very detailed information on over

150

world beers which can be easily ordered online

# BIKE - RIDE - STRIDE

Saturday 9th September 2006

All Hallows Church are participating once again in this year's event in aid of the **DEVON HISTORIC CHURCHES TRUST**. This event provides the opportunity to actively support the Trust whose task is to help churches and chapels of all denominations with grants or loans for major repairs. Last year the Trust raised nearly £50,000, enabling them to make a significant contribution to the financial upkeep of some of Devon's most beautiful but expensive to maintain churches.

In the event held in 2002 you raised the grand sum of £360 which was split equally, (as will this year's) between All Hallows & Devon Historic Churches Trust.

This year, All Hallows, Ringmore, is organising a couple of escorted walks combined with treasure hunts as shown below.

## Walk 1

11.00am Saturday 9th September

Departing All Hallows, walk to Kingston Church a return distance, over the fields, of about 3 miles. An optional break for Lunch, at your own expense, at The Dolphin in Kingston will enable walkers to refresh themselves before returning to All Hallows arriving about 2.00pm.

## Walk 2

3.00 pm Saturday 9th September

Departing All Hallows, walk to Bigbury Church a return distance, over the fields, of about 2½ miles. An optional break for refreshment, at your own expense, at The Royal Oak, prior to returning to All Hallows arriving about 5.30 pm. It is advisable to wear wellies or stout walking shoes on this walk as it can be muddy in places.

## Treasure Hunt Around Ringmore

It is hoped to arrange a Treasure Hunt around the village of Ringmore, lasting about an hour, for those who wish to join in the day's events but don't feel able to participate in the above Walks.

Free Light refreshments and Treasure Hunt Entry forms will be available in All Hallows between 11.00 am & 6.00pm

Dogs, cats, teddy bears, under-control horses and bikes are most welcome to join in the day's events. We warmly invite you and friends to join us in making this a successful and enjoyable day together with raising funds for the **DEVON HISTORIC CHURCHES TRUST & ALL HALLOWS**.

Further information & sponsorship forms are available from Phill Errett (810547) or Yvonne Sheppard (810341).



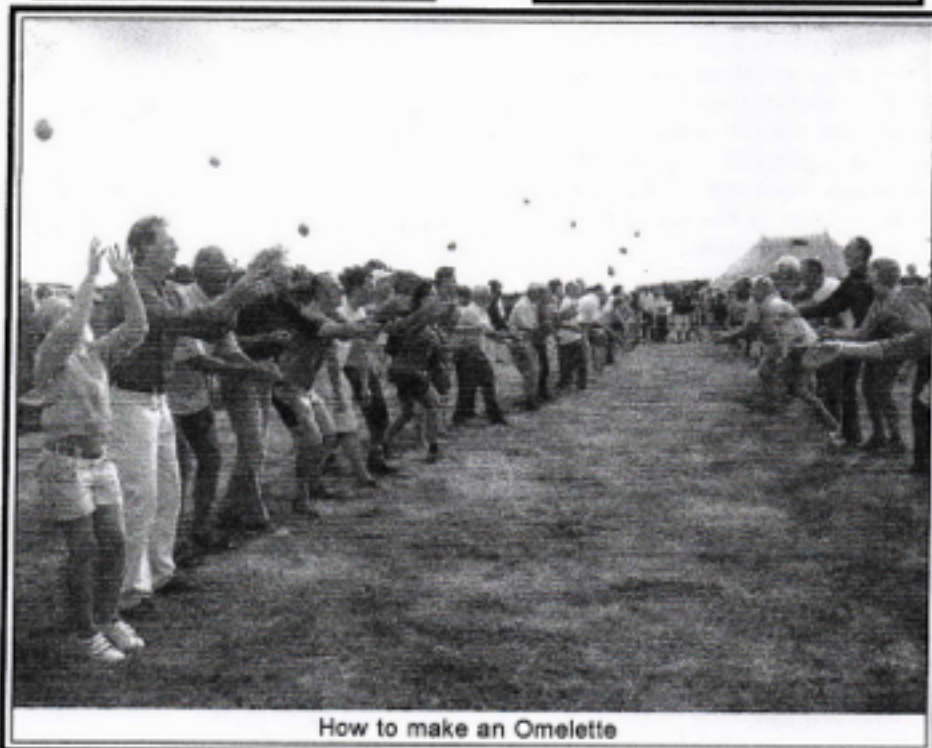
Butterfingers



Zounds! I think she's got it



A worm's eye view



How to make an Omelette



A near miss!

Scenes  
from  
a  
successful  
Church Fête

The Royal Oak



FREE HOUSE

# The Royal Oak Bigbury

Telephone: (01548) 810313



Enjoy good homemade food in our cosy bar area or sit in the Lounge or Restaurant areas and choose from either the bar menu or our a la carte specials board. We provide only the best quality food all freshly cooked on the premises and at reasonable prices.

Open for meals 7 days a week, lunchtimes and evenings.

**TRADITIONAL HOMEMADE HEARTY FOOD**

There is a choice of 3 real ales, all served direct from the cask and a full range of keg lagers and bitters.

Refurbished en-suite accommodation. Large car park and garden.

Please remember that we are very busy during the evenings so it is always advisable to book your table in advance

## BAR OPEN ALL DAY EVERY DAY



### DIARY FOR SEPTEMBER



- Sat 16th Sept** STAFF & LOCALS B.B.Q. NIGHT in the garden. 'SUMMER BEACHWEAR' theme.
- Mon 18th Sept** EUCHRE DRIVE starting at 8pm and every Monday onwards.



DARTS LEAGUE matches start this month. Dates to be confirmed.



## OUR 2006 CHARITY

At our meeting on Thursday 14<sup>th</sup> September we shall be welcoming Mike Spry from the Shekinah Mission in Plymouth. He will be talking about "Working with the Homeless". The normal business for W.I. members will be dealt with first at 7.30 p.m. This will be followed at 8 p.m by an Open Meeting for everyone, young and old, men and women, with refreshments and our speaker.

## And a big Thank You . . .

. . . to all who helped at the W.I. Fête on 2<sup>nd</sup> August. Through your efforts we raised over £1,000 which will pay for the new shed, tables and party gazebo.



## Last Month

Even the error (apologies) did not deter entrants. Seven successful attempts - The Springers, Taurus, The Matchman, New Dawn, Half Baked, The Beginners and The Opals. Thank you to all of you for supporting Enigma, through thin and thinner times! The puzzle will continue, I am assured.

The Opals disagreed, in a civilised manner, with the last published Standings and their protest was accepted by the over generous Appeals Committee which seemed to be more interested in the tea and biscuits.

The Standings at the end of July are:

Taurus 17%, The Opals 17%,  
The Matchman 17%, The Springers 13%,  
The Beginners 12, Half Baked 11,  
New Dawn 8%, Frequent Visitor 8,  
Sue Brickay 7%, Fanny Adams 7

## This Month

So, for the last time try this one.

A Magic Square is a grid in which columns, rows and diagonals total the same. The grid below contains a profusion of Magic Squares, in this case 6 blocks of 3x3, (totalling 15, 24, 30, 42, 60 & 123) and 2 blocks of 5x5 (totalling 65 & 205 respectively). Also, it contains a grid, 3x3, in which the three lines across are Square Numbers which can read across and down. There is a similar block, 4x4. All you have to do is find the blocks and write them down and send them to Ringmore Vein by 26th September.

1	2	1	1	6	2	1	11	29	28	27	26
1	1	2	2	5	15	31	50	29	60	35	30
2	1	2	9	6	30	46	38	45	40	36	15
2	6	5	6	1	6	33	43	41	39	49	32
17	10	15	24	28	8	48	42	37	44	34	29
12	14	16	4	20	36	47	32	53	22	51	14
13	18	11	32	12	16	5	2	9	6	7	2
17	1	15	24	8	22	2	5	6	1	5	9
14	23	7	16	5	16	9	6	1	8	3	4
6	20	4	13	22	7	14	9	10	11	4	9
3	12	21	10	19	12	10	8	8	6	8	10
25	9	18	2	11	11	6	13	6	7	12	5

## TEN YEARS AGO . . .

A number of properties suffered break-ins. The Church suffered the most with the Offertry Box being broken open twice and some of the Church Silver disappearing.

A disturbing moment occurred at Aymer Cove where a loud bang preceded a spectacular fall of rock. Fortunately no-one was sitting under the cliff at the time.

A Cream Tea, held to raise funds to provide a strimmer for the village, was subverted in the nicest possible way by the donation of the equipment.

## TWENTY YEARS AGO

The W.I Fête made £617 and the Church Fête made £410.

The Newsletter format was changed from Foolscap to A4. Those who remember Foolscap might be interested to be reminded that the name derived from the watermark.

# **JOIN THE WORLD'S BIGGEST COFFEE MORNING**

**Friday 29<sup>th</sup> September 2006**

**Ringmore W.I. Hall**

**From 10.30 a.m.**



**WE ARE  
MACMILLAN  
CANCER SUPPORT**

As screening and treatments improve, more and more people are living with cancer in their daily lives. As well as medical help, they need practical, emotional and financial support. To meet these needs, Macmillan is broadening its range of services, and the money raised through the World's Biggest Coffee Morning will help to ensure that we improve as many lives as possible.

# 2006 - TOWNS - CITIES - PLACES - 2006

MOSTLY IN THE UK BUT ALSO FROM AROUND THE WORLD

This year's fundraiser for the Newsletter covers Towns, Cities and places, mostly at home but some abroad. The whole of the Newsletter staff, from the Proofreader to our Street Vendors hope you will have fun finding the answers. As always, there is a mixture of phonetics, humour, puns, imagination, clumsy pronunciation, cryptic clues, lateral thinking, tired ideas and the dreadful groan factor. This is my sixth and final year as the setter of this time-wasting (yours not mine) fund-raiser. You have said that you have enjoyed anguishing over alternatives; it has certainly been a stimulating challenge to devise the clues, regardless of their quality. The Newsletter has benefitted greatly; thank you for your support,

£1

Geof Dykes

£1

A prize of £10 will be awarded to the winner. In the event of a tie, the prize will be shared.

Name & Address or  
Telephone number

Return your answer sheet by Monday 25th September to:  
Ringmore Parish Newsletter,  
Ringmore Veau, Ringmore, Devon TQ7 4HL

1 Creepy		26 In France the peak of flower growing	
2 2240 lbs held in great affection		27 Is this the end of the Deli?	
3 What Moses did to the waters, here they do to the earth		28 An active volcano in Vietnam	
4 Huts gathered for the festivity		29 Sounds like lots of paper in France	
5 The side of a church, north of the border		30 Sounds like a Swedish pop follower	
6 Houston might lead you there		31 Continue to decorate until told to stop	
7 Is this the point of Australian evolution		32 Sounds as if it is in reserve	
8 Something dodgy in Australia is like this		33 Bring about a capital change to Kyoto	
9 Musical performance?		34 Where one might find an imp in Argentina	
10 Pretend in front of the cathedral, with some hesitation		35 Not quite a full stop in Panama	
11 Here they must meddle all day, everyday		36 Robin Hood's antipodean enemy	
12 Put away trading place		37 No salinity here	
13 A number who befriended Quasimodo, in Equador		38 Later it became New York but not on the north coast of South America	
14 River crossing options		39 Unskilled way of applying graffiti	
15 One must hope one has crossed the water by this point		40 How you expel surplus water from cloth without a mangle?	
16 A town on calcareous clay		41 Maine place in Northern Ireland and Wales	
17 Whence came a Lord Chancellor?		42 Is this the very best pretence in the country?	
18 The world's largest isolated conurbation but not in Scotland		43 What Lynnette, the monarch's mistress was known	
19 Make an allowance of cured pork		44 This stretch of still water could only be in Wales	
20 Is this where Jean was born?		45 You would think this trench were in Devon, judging by the soil	
21 Where campers go for their annual holiday		46 In the direction of the French party, in Spain	
22 Wishing one was grown up		47 What the Journey's End would be if it were thirty storeys high, in northern Europe	
23 The mutineers on the Bounty		48 Leave nothing in South America	
2 A flaw in the cloth, found before the bell tolled		49 A long fish wrapped in an Australian medal	
25 The sister who met Mr Right?		50 They seem to have more than enough in this wide Kiwi inlet	

