

# RINGMORE PARISH NEWSLETTER



*May has been a quiet month but the weather has produced a magnificent display of wild flowers in the hedgerows. We should count our blessings*

*The long-heralded change at the Journey's End finally took place and things are beginning to bed down. Not that we should want nothing to change. We should not be averse to a fresh approach or new ideas. So long as there is some flexibility on all sides, everyone will be happy.*

*Have you heard of World Environment Day? More is elsewhere but it happens to coincide with our own 'environment day'; the annual skip will be in the JE Car Park.*

*Advance notice is given of the annual Bike-Ride-Stride event which will take place in September. You are being given time to assemble a monstrous list of sponsors and the opportunity to get into gentle training.*

*The WI will hold its annual Barbecue at the WI Hall and Gardens on Wednesday 9th June starting at 6.30pm. You don't have to be a member or even a resident of the village to be welcome. Fingers crossed for clement weather.*

*On 26th the annual Bigbury Fun Run will be held. Ringmore will have an interest. Some will be running, some will be walking and a few, no doubt, will be drinking to their success. In which group will you be? It will be fun and it is a charitable event. What isn't round here?*

*Finally, if the garden is becoming a chore, spare a thought for the Braceys, although sympathy should be tempered by the knowledge that it is, for them, a labour of love. Their garden at Scypen will be open for charity on Sunday 20th, Wednesday 23rd and Saturday 26th, in aid of charity. Your support would be most welcome.*

## SKIP

Saturday 5th June

10.00am - 4.00pm

Journey's End  
Car Park

By kind permission of the Landlord

## Diary for the Month

TUESDAYS: Table Tennis Parish Room 7.30pm  
FRIDAY: Steak Night at Journey's End

June

2nd Royal British Legion Royal Oak 7.30pm  
5th The Annual SKIP JE Car Park 10.00am - 4.00pm  
9th WI Barbecue WI Hall and Grounds 6.30pm  
20th Garden open at Scypen 2.00pm - 5.00pm  
22nd Parish Council meeting WI Hall 7.00pm  
23rd Garden open at Scypen 2.00pm - 5.00pm  
26th Bigbury Fun Run  
Garden open at Scypen 2.00pm - 5.00pm

July

7th Royal British Legion Dolphin Inn, Kingston 7.30pm to be confirmed

## MOBILE LIBRARY

Friday: 4th & 18th

Ringmore Church  
12.15 - 12.25

Challaborough  
12.30 - 12.40

St Ann's Chapel  
1.15 - 1.30

Kingston Fire Stn  
3.45 - 4.30

## JUNE 2004

Issue Number 227

### DEADLINE

Saturday  
26th

Editor:  
Geof Dykes  
810123

## RAINFALL

Fiona Batten

Last Month

63"

64"

Ten Year Average

2½"

Ten Year High

2002/03 4¼"

Ten Year Low

1999 ¼"

*Please send items for inclusion in the Newsletter to:  
The Editor  
Ringmore Parish Newsletter,  
Ringmore Vean, Ringmore, TQ7 4HL  
or put them through the letter box in the garage door  
email: news@ringmore.com*

AS SEEN ON TV

**JEAN MOORE**  
MGCP - ITEC - CBMAC - ASTA - BAAE

**Aromatherapy \* Bowen Technique \* Reflexology  
Hopi Ear Candle Therapy**

**PAIN RELIEF**  
from

Sciatic Frozen Shoulder Back Pain  
Menopause Insomnia Arthritis ME

Call me for a discussion  
01548 810597 or 01752 863528

**Rob Batten** Cars Ltd

Quality cars to suit all pockets



4 x 4 Specialist

Phone for a chat  
810680



**ALAMAC**  
GARDEN MACHINERY LTD  
Avon Bridge Aveton Gifford

550880

**SALES  
SERVICE  
SPARES**

For all your Garden Equipment  
Give us a call

**QUALITY MACHINERY AT THE RIGHT PRICE**

**NIGEL FROST**

B.Sc.(Hons)

Optometrist

FC Optom

Chene Court, Modbury  
next to car park

01548 830944

Open Weekdays and Saturday Morning  
Contact Lenses, Spectacles, Accessories  
Complete Eye Examination

**BIGBURY STORES**

01548 810213

Open Seven Days a week 7.30am - 8.00pm

Bread + Fruit & Veg + Milk & Dairy Products

Aune Valley Meat + Best Back Bacon + Ham

Newspapers & Magazines

Calor Gas & Coal + Video Hire

Electricity Key Charger and Bill-paying facility

Daily Deliveries - No order too small - Just give us a ring

Jon & Jackie Ransom

**A M KING & SONS**

Registered Builders

Internal & External Decorations

uPVC Windows & Fascias

Extensions/Conversions

New Kitchen  
or Bathroom

810570



Flowering Bouquets  
Funeral Tributes



"Rosemary"



Flowers  
for  
all occasions

1 Broad Street  
Modbury  
Tel 01548 830048

**Nicholas**  
HAIR & BEAUTY

Tel: 01548 830152

Ladies' & Men's Salon

Hairdressing  
Beauty Treatment  
Aromatherapy,  
Massage, Reflexology

Salon open:  
Tuesday - Saturday 9.00am - 6.00pm  
Early morning and late night  
appointments can be accepted

We specialise in long hair for  
weddings and other special occasions  
London House  
Church Street  
Modbury, South Devon

Residential  
Care Home

Prop: Gina & Gordon Phillips

**KORNILOFF**

Overlooking Burgh Island

A Family-run Home NVQ trained staff

24 hour Care, Home cooking, Special diets catered for,  
Stair Lift, Hairdresser, Chiropodist, Bath Hoist if needed  
Large Single, Double or Twin rooms by choice. Some en-suite

Your Dignity and Privacy is paramount

Our own Minibus for outings

Registered by the National Care Standards Commission

Warren Road, Bigbury-on-Sea, Devon TQ7 4AZ  
Telephone: 01548 810222

Hotel for  
the Elderly

The  
**Oyster  
Shack**

Seafood, salads,  
sandwiches

Bring your own wine -  
we supply the glasses

Booking  
advisable

Stakes Hill, Bigbury  
Tel: 01548 810876

Opening Times

Lunchtime

Tuesday - Sunday  
from 12.00

Closed  
Monday

**Eryer Tuck's**  
Take Away

CHALLABOROUGH BAY  
Tel: 01548 810425

Award-winning

**FISH & CHIPS**

Pasties - Pizzas - Pies

Salcombe Dairy Ice Cream

Beach Goods - Wet Suits  
Boards for Hire

Easter to end October  
10.00am - 10.00pm



**Jinny McCabe**  
Wedding Florist

Bouquets

Church & Marquee  
Decoration

Foxhole  
Dukes Mill, Bigbury  
Kingsbridge, TQ7 4AN  
Tel: 01548 810538

# NEWS FROM ALL HALLOWS

## Judge Not Lest Ye Be Judged

(Bible Verse: Matthews Gospel: Chapter 7: verse 1.)

### June Services

#### Ringmore

- 6<sup>th</sup> 11.00a.m. Family Service
- 13<sup>th</sup> 9.00a.m. BCP Morning Prayer
- 20<sup>th</sup> 6.00p.m. Evening Prayer
- 27<sup>th</sup> 9.00a.m. BCP Communion

#### Other Local Church Services

##### Bigbury

- 6<sup>th</sup> 11.00 a.m. Family Service
- 13<sup>th</sup> 11.00 a.m. Family Communion
- 19<sup>th</sup> 2.30 p.m. Korniloff Communion
- 20<sup>th</sup> 11.00a.m. BCP Communion
- 27<sup>th</sup> 11.00 a.m. Family Communion with  
Baptism (Megan Linzell)

##### St James's Kingston

- 6<sup>th</sup> 9.00 a.m. Communion
- 13<sup>th</sup> 6.00 p.m. BCP Evening Prayer
- 20<sup>th</sup> 11.00 a.m. Family Service &  
Children's Club
- 27<sup>th</sup> 6.00 p.m. Evening Prayer

#### Some Non Biblical Wisdom

Never test the depth of the water with both feet.

Before you judge someone, you should walk a mile in their shoes. That way, when you judge them, you're a mile away and you have their shoes.

If at first you don't succeed, avoid skydiving.

Give a man a fish and he will eat for a day. Teach him how to fish, and he will sit in a boat and drink beer all day.

Have you ever lent someone 20 pounds and never seen that person again? It was probably worth it.

Generally speaking, you aren't learning much if your lips are moving.

#### Two Questions

##### Question 1:

If you knew a woman who was pregnant, who had 8 kids already, three who were deaf, two who were blind, one mentally retarded, and she had syphilis, would you recommend that she have an abortion? Read the next question before looking at the response for this one.

##### Question 2:

It is time to elect a new world leader, and only your vote counts. Here are the facts about the three candidates.

*Candidate A:* Associates with crooked politicians, and consults with astrologers. He's had two mistresses. He also chain smokes and drinks 8 to 10 martinis a day.

*Candidate B:* He was kicked out of office twice, sleeps until noon, used opium in college and drinks a quart of whiskey every evening.

*Candidate C:* He is a decorated war hero. He's a vegetarian, doesn't smoke, drinks an occasional beer and never cheated on his wife.

Which of these candidates would be your choice? Decide first. No peeking below,

?  
?  
?  
?  
?  
?  
?  
?  
?  
?  
?  
?

Candidate A is Franklin D. Roosevelt.

Candidate B is Winston Churchill.

Candidate C is Adolph Hitler.

And, by the way, on your answer to the abortion question:

If you said YES you just killed Beethoven. Pretty interesting isn't it? Makes you think before judging someone.

(John Elliott, Resident Minister Bigbury, Kingston &  
Ringmore: Phone 01548- 810565)

# M and J P Builders

All types of building work  
undertaken

New Buildings

Renovations

20 years experience  
in Building Trade

For FREE Estimates and Advice  
please phone  
810633

# PORTUGAL

HOLIDAY APARTMENT  
near TAVIRA

**TWO BEDROOMS**  
SLEEPS 4

45 minutes from  
Faro airport

Cheap flights from Bristol

Prices from £170

Contact: 01548 830513  
<http://stephanlegreydevon.tripod.com>

# Nigel Walton

Computers built to exacting requirements  
Almost trade prices  
Upgrades, Processors, Hard Disks and  
Software solutions  
No job too small

Lousown

Folly Hill

Bigbury-on-Sea

Tel: 01548 810767



# Modbury Pharmacy Ltd

REPEAT PRESCRIPTION  
COLLECTION & DELIVERY SERVICE

Do you have difficulty collecting your repeat  
prescription? If the answer is yes, we can help.  
For more information just call the number  
below or pick up a leaflet from the Pharmacy.

Tel: 01548 830215  
OPEN: Mon - Fri 9.00am - 6.00pm  
Sat 9.00am - 5.00pm

# TILLY DOWNING B.Sc. Pod., M.Ch. S.

STATE REGISTERED CHIROPODIST

2004 Charges for full treatment  
Surgery £13  
Home Visit £16

The Laurels, Fore Street, Aveton Gifford  
Tel: 01548 550072

Opposite the Memorial Hall Car Park



# THE MODBURY BAKERY

Fresh Sandwiches, Hot Snacks, Cakes, Tea & Coffee  
Broad Street, Modbury

Fresh Bread & Cakes

DELIVERED  
DAILY



to Bigbury Stores



Julie  
Fully Qualified  
810634

Mobile  
Ladies & Gents  
Hair-stylist



# KEVIN LIGHT

Plumbing & Heating Engineer  
CORGI/OFTEC & ACS Registered

OIL-SOLID FUEL-GAS

REPAIRS - SERVICING  
NEW INSTALLATIONS

Wychbury, Ringmore Drive,  
Bigbury-on-Sea, Devon TQ7 4AU  
Tel: 01548 810726 Mobile: 07721 955508

> CAVE  
DIRECT  
SPECIALISTS IN  
BELGIAN BEERS

100 BELGIAN BEERS  
AVAILABLE FOR  
HOME DELIVERY

FULL DETAILS ON  
[www.belgianbeers.co.uk](http://www.belgianbeers.co.uk)

TRADE ENQUIRIES  
Tel: 01548 810848



# NEZ CHAPMAN GARDEN SERVICES

FREE ESTIMATES

GENERAL GARDENING  
MOWING - STRIMMING  
TREE & HEDGE WORK

FIREWOOD  
LOGS - WOOD CHIP  
NETTED OR BY THE LOAD

FIRE STARTERS  
NETTED

Minimum of 5 nets or 1 load delivered  
Tel: 810016 Mob: 07718 722680

# FOR 'REAL' CHEESE & WINE

MACKGILLS

+ Handcut Farmhouse English &  
Continental Cheese

+ Home-cooked Ham & Salamis

+ Home-cooked Pies & Cakes etc.

+ Wine, Beer, Sherry & Cider . . . .  
and much more

Telephone Enquiries Welcome



DELICATESSEN

4 Church Street, Modbury, Devon PL21 0QW  
Telephone: Modbury (01548) 830860

# Journey's End Journal

Hello again!

Well we made it. The last ten days have been anything but boring . . . perhaps as entertaining for you as trying for us. No matter . . .

We appreciate your support and promise to do all we can to provide the best food, beer and service we can achieve.

Elaine and Matt, your genial chef (but don't ask for peas), have worked extremely hard to devise an exciting and varied menu. Daily delivery of fresh ingredients will result in a mouth-watering choice to suit all tastes.

Matt, who hails from Australia, is very keen to try different recipes and regional dishes. We hope you will be candid in your appraisal and welcome your comments. (Don't forget what I said about the peas).

You will be aware of the changes to our

Dining Room and we hope you approve. There are other subtle changes we wish to introduce. Again, we welcome your comments.

I have caused many of you concern regarding your dogs and their access to the Pub. Sorry. It has been really difficult for me to decide on a course of action that balances our wish to maintain the highest standards whilst serving food, yet not wishing to upset those of you wanting to bring your hound in.

So, as long as the dog is kept under close control, with the exception of the Dining Room, please bring Fido along.

There are many other things we want to involve you all in and hopefully, in future Newsletters, we will have the opportunity to solicit your opinions.

In the mean time, thanks again and please continue to support YOUR local.

Ken



Tel 01548 810205

Monday - Friday

Noon - 3.00pm

6.30pm - 11.00pm

Food served until 9.00pm

Saturday: Noon - 11.00pm

Food served until 9.00pm

Sunday: Noon - 11.00pm

Roast lunches until 3.00pm

Pizzas in the evening

A la carte Restaurant hours:

Tuesday - Saturday :

12.00 - 2.00pm

6.00 - 9.00pm

## TEN YEARS AGO . . .

The last quiz of season at the JE took place on 2nd June.

The National Trust began clearing and replacing trees in the wood at Lower Manor. *The work does not appear to have been as intrusive as had been feared.*

The Annual Meeting of Trojan Car Club was held at Barnford with the adjunctive rally through the lanes.

Gardens at Hill Cottage, Scypen and Nodden Farmhouse were open in aid of the Red Cross

## WORLD ENVIRONMENT DAY

Did you know that 5th June is a UN designated day for drawing attention to the environment. Perhaps a few of us are aware of this. To spread the news of this year's campaign the Environment Agency is asking people in the South West to sign up to one or more of ten possible pledges to focus attention.

How are they doing this? By suggesting that we visit their website:-

[www.environment-agency.gov.uk/wedpledge](http://www.environment-agency.gov.uk/wedpledge)

What, you don't have access to the web? Never mind they have put out letters and posters . . . . but none of them lists the pledges. However diligent searching of the net has revealed the following:

- 1 When cleaning your teeth do not leave the tap running.
- 2 If it is still chilly, tune the heating thermostat down by one degree.
- 3 Plant a tree as part of a community forest.
- 4 Re-use plastic bags when shopping.
- 5 Re-place a light bulb with an energy-saving bulb.
- 6 Place a 'brick', eg a plastic bottle full of water in the cistern to reduce the amount used on each flush.
- 7 When not using your computer, at least turn the monitor off. This would save 70% of the power being used when it is idle.
- 8 Once a week dry clothes on the line instead of using the tumble dryer.
- 9 Take a shower instead of a bath. You could, of course, get as many people in the shower as possible to conserve even more energy. How about a sponsored

## RE RECYCLING

The willingness to recycle household rubbish is growing and many people in Ringmore take rubbish to Holywell Stores for collection in spite of the fact that Ringmore is not part of the scheme.

Still, it is not always easy to know just what can be recycled and what is just plain rubbish. The three sacks, blue, orange and clear are for different types of waste material.

Blue:- Paper - newspapers, magazines, junk mail, paper bags, etc.

Orange:- Cardboard - cereal boxes, tubes, boxes, etc.

Clear:- plastic bottles, aluminium and steel (drink cans, cat food tins, soup tins, foil dishes), etc.

The following are some of the DONTs:

- Carrier Bags
- Glass
- Garden waste
- Food waste
- Plastic yoghurt/margarine tubs
- Polystyrene
- Waxed or foiled cartons
- Shredded paper
- Wallpaper
- Clothing/textiles
- Dirty materials

If the foregoing serves only to confuse further, consult South Hams District Council on 01803 861234

continued...

shower crush?

10 Don't leave the TV on stand-by. This uses as much power as if it were on.

Do it once and conservation could become a habit.

Editor

**TOM'S SHELL**

Self Serve	Cash or Credit
Four Star	<b>ARM<sup>9</sup></b>
Unleaded	<b>LEG<sup>9</sup></b>
Premium	<b>First<sup>9</sup> Born</b>

A sign of the times

## HIRAM BOWDEN

Repairs  
Servicing  
MOT



Cars collected  
& returned

Tel: 550129  
Evening 01752 896065

## BARDENS GARAGE

BIGBURY

Servicing ~ MOT Welding

Mechanical Repairs ~ Accident Repairs

Bodywork ~ Repairs

Breakdown ~ Accident recovery available

01548

07887

810627

Proprietor: E Nicklen

610247

## SHEPPARDS

Chartered Accountants

Your Local Accountants

Call Ian or Yvonne Sheppard  
on (01548) 810341 or (01752) 220333  
fax (01752) 221742

www.sheppardsaccountants.co.uk

Free initial interview & Free Parking

1 Addison Road, North Hill

Plymouth PL4 8LL

Full Accountancy & Taxation Service



## DEVONSHIRE FINE ART

Antique Watercolours, Oil Paintings,  
Drawings, Maps and Prints.

Quality Picture Framing Service.

9 Church Street, Modbury,

Devon PL21 0QW

Telephone/Fax: (01548) 830872

Email: info@antique-fine-art.com

Website: antique-fine-art.com



PRE  
TEXT

Anything  
you want

that

I can do,

if

I want to!

GEOF DYKES

TEL 810123

**DJ BUMPKIN**

All the music all the ages  
Any occasion Competitive rates

Call Keiron at Holywell Stores Tel: 01548 810308  
keironvanstone@yahoo.co.uk Mob: 07941889503

Don't let the fear of flying **STOP** you having a holiday -  
the whole of Europe is just across the English Channel!

**HOLIDAYS** for all, by **ROAD, RAIL** and **SEA**  
in the UK, Ireland and Europe

and  
The rest of the world **BY AIR**

**FARE DEALS TRAVEL SERVICES**

**01548 810869**

www.holy-wells-travel.co.uk  
amr@holywelltravel.co.uk



# HOLYWELL STORES & POST OFFICE

01548 810308

ST ANN'S CHAPEL

01548 810308

**SURF THE WEB £1.00 FOR 30 MINUTES**  
**VIDEO & DVD RENTAL - £2.75**

## SHOP

MONDAY TO SATURDAY

7.00AM - 6.00PM

JULY & AUGUST 7.00AM - 8.00PM

SUNDAY 8.00AM - 5.00PM

CREDIT AND DEBIT CARDS ACCEPTED

NO MINIMUM FEE

## POST OFFICE

MONDAY TO FRIDAY

9.00AM - 1.00PM

CASH MACHINE &

MOBILE PHONE ELECTRONIC TOP-UP

Wide Range of Local Cheeses

(incl Sharpham and local Goat & Sheep cheeses)

Fresh Daily Bread - Organic Vegetables

Fruit & Veg - Frozen Foods - Groceries

Aune Valley Meat - Heron Valley Juices

Lavage Farm Cream & Ice Cream

Coal - Logs - Charcoal - Calor Gas

Newspapers & Magazines -

Clive's Organic Vegetarian Pies,

Pasties, Flapjack and Luxury Cakes

Off Licence - wide selection of Wine & Beers

**NOW STOCKING A RANGE OF**

**BOTTLED BELGIAN BEERS**

Local Agent for Air Ambulance Lottery

# The Royal British Legion

## BIKE- RIDE- STRIDE

## RINGMORE PARISH COUNCIL

Brain McCabe gave us an interesting talk about Jackspeak, language which is commonly used in the Navy. It would appear it centres mainly on rum!

He left us with a poem and as I thought there might be one or two dubious meanings to some of the words I felt it necessary to look them up in a very informative book called Jackspeak by Rick Jolly. I can confirm none of these words are rude or have any sinister meanings, but in the course of my research I did come across some words which I wish I hadn't! However, for a full translation, please contact Brian McCabe.

### The Life of a Matelot

There's missmusters, slopchits, tot time  
and pay  
These's rising and shining and hitting  
the hay  
There's thickers and strongers and  
neaters as well  
There's DQ's and choaky and the tiller flat  
cell  
There's aft and there's for'ard, abeam  
and abaft  
To civvies this cackle seems awfully daft  
But to us in the andrew it doesn't seem  
strange  
Like the draft chits the jossman can always  
arrange  
We're always being seen off and getting  
green rubs  
And chasing up rubbers looking for subs  
And going ashore like a great herd of  
cattle  
And getting filled in and put in the rattle  
There's runs out to honkers that to jack  
are just fine  
There's times when we say "Roll on my  
Nine"  
And when mine comes and we're out on  
the dole  
In old civvy street where we don't know a  
soul  
We think of the good times and wish we  
were back  
In bells, silk and lanyard .... a real tidy  
Jack!!

Our thanks to Brian for letting us in on some of the commonly used words in the Royal Navy and we look forward to our next instalment.

Robbie McCarthy  
Hon Secretary

## 100 CLUB

April £20 James Stevenson  
£5 Mr Randle

On Saturday 11th September, All Hallows' Church will once again be participating in the Devon Historic Churches' Bike, Ride or Stride event.

This event provides Ringmore with the opportunity to actively support the Trust whose task is to help churches and chapels of all denominations with grants or loans for major repairs. Last year the Trust raised nearly £50,000, enabling them to make a significant contribution to the financial upkeep of some of Devon's most beautiful but expensive-to-maintain churches.

Entrants are invited to find as many sponsors as possible who will agree to pay a given sum of money for every church visited or mile covered, whether on foot, bike or even horse. It is intended to organize walks, amongst other events, from All Hallows during the day.

Refreshments will be available at All Hallows so even if you cannot manage the Bike, Ride or Stride, you may wish to sponsor the day's events on some other way, eg the number of drinks served in our church. Alternatively, you might choose to provide refreshments or support the day in some other way.

Monies raised through sponsorship are equally divided between the Devon Historic Churches Trust and All Hallows. In 2002, we raised the grand sum of £363.

Further details will be given in subsequent Newsletters leading up to the day but please contact me if you wish to enter or help or offer suitable ideas to make it an enjoyable fun day.

Phill Errett  
810547

## MODBURY CARING

Is pleased to present the

**TORBAY T**  
**SYMPHONY S**  
**ORCHESTRA O** In concert

Friday 4th June 8.00pm  
St George's Church Modbury

Programme

Ligeti Ramifications for  
String Orchestra

Beethoven Violin Concerto  
Symphony No 7

Tickets: £5 under: 14 half price  
available from  
Pickles Hardware  
and  
Modbury Health Centre  
or at the door

Meeting: Tuesday 18th April 2004  
Present: Five councillors, the Clerk,  
Mr David Young, Neighbourhood Watch  
Apologies from Cllrs Jackson and Parkin

**Elections:-** Councillor Dykes was unanimously voted in as Chairman and Councillor Batten as vice-chairman of the council for the forthcoming year. Councillor Dykes was also elected to represent the council on the Parish Room committee.

**Neighbourhood Watch:** Nothing to report.

**Footpaths:** In order to negotiate the climbing of the stile at the end of Cockle Lane next to the stream, the height will be adjusted. Councillor McCarthy hopes to complete the work by the end of July.

**Planning:** The application for the entrance to the Old School House was approved by S.H.D.C.

An application to fell sycamore trees and lop branches off a walnut tree at Scypen was not objected to by the council if they appeared dangerous but trees should not be felled in order to improve the view.

**Finance:** Internal Audit - £28.00  
Comhill Annual Insurance - £268.00  
Grass Cutting - £32.00  
Election (May 2003) - £767.05

**Land Registration:** The Parish Council agreed to register the following:

1. The Town Well
2. The triangle of land on which the Bus Shelter stands.
3. The Bowling Green at the top of Challaborough hill.

**Skip:** The annual skip will be in the Journey's End Car Park on Staturday 5th June.

**Local Bus Service:** The weekly service to Kingsbridge has been withdrawn due to lack of support.

**Next Meeting:** Tuesday 22nd June at 7.00pm in the WI Hall.

Thelma Mann



# TURTLE PRODUCE

BOWLING GREEN CROSS  
BIGBURY

Tel: 01548 810406 Mob: 07814 261956

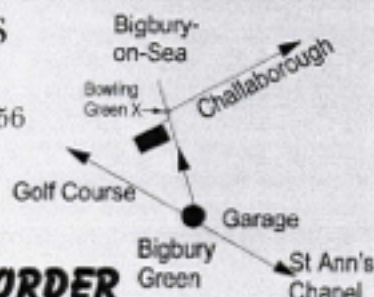
**BEDDING PLANTS**

**HANGING BASKETS**

**CONTAINERS PLANTED TO ORDER**

**VEGETABLES LATER IN SEASON**

**COMPOST**



I might look  
like them but  
the similarity  
ends there

## Spell Chequer

Submitted by Robbie McCarthy

Eye halve a spelling chequer  
It came with my pea sea  
It plainly marques four my revue  
Miss steaks eye kin knot sea.

Eye strike a key and type a word  
And weight four it two say  
Weather eye am wrong oar write  
It shows me strait a weigh

As soon as a mist ache is maid  
It nose before two long  
And eye kin put the error rite  
It's rarely ever wrong.

Eye have run this poem threw it  
I am shore your pleased two no  
It's letter-perfect in its weigh  
My chequer tolled me sew.

Dear Sir,

I and my good lady wife are writing in response to the proposed plans for a Ferret Hunt in the village. We moved to Ringmore to live a quiet life in our detached one-bedroomed hutch and are decent upstanding members of the community, though we find it hard to get out to join the table tennis club.

We recognize the need to deal with louts that cruise the area at night causing widespread havoc and devastation but we do not wish to be tarred with the same brush as the ruffians that are our cousins (very distant).

Moreover, we are concerned that, as we bring up our family, there may be danger to our precious (and well-bred) offspring and the thought of the vicar, in a flat cap, zooming about rounding ferrets makes our whiskers quiver even more than usual.

Already we have our near neighbours breeding a whole cohort of hunting springers which we trust will remain under control and will be well trained.

Please will you take the needs of all residents of the village into consideration and ensure that we can continue to live in safety and peace.

Yours truly

Mr Jive Bunny and Mrs Parsnip Bunny.

*This seems to be a case of passing buck (and doe). What they used to say about Injuns applies here - the only good rabbit is in a pie! Has the vicar got a flat cap? Absorbing though it is, the subject of rabbits is closed for a while.*

Ed.

## A Corporate Lesson

A man is getting into the shower just as his wife is finishing her shower when the doorbell rings. After a few seconds of arguing over which one should go and answer the doorbell, the wife gives up, quickly wraps herself up in a towel and runs downstairs.

When she opens the door, there stands Bob, the next door neighbour. Before she says a word, Bob says, "I'll give you £500 to drop the towel that you have on" After thinking for a moment, the woman drops her towel and stands naked in front of Bob. After a few seconds, Bob hands her £500 and leaves. Confused but excited about her good fortune, the woman wraps back up in the towel and goes back upstairs. When she gets back to the bathroom, her husband asks from the shower, "Who was that?" "It was Bob from next door," she replies. "Great," the husband says, "did he say anything about the £500 he owes me?"

Moral of the story: If you share critical information, pertaining to credit and risk, soon enough with your stakeholders, you may be in a position to prevent avoidable exposure.

## WELCOME

Mark Tucker and Mikaela Parry have recently moved into Dulce Domum. We welcome them to the parish and hope that they have a very happy time in Challaborough. We look forward to meeting them, perhaps at any one of the summer events

## DID YOU KNOW?

A midget fortune-teller who escapes from prison is a small medium at large. Boom, boom!

# SANJIDA

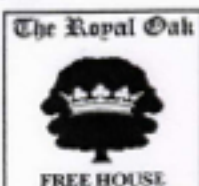
*Modbury's Gold Award-winning  
Indian Restaurant & Take-away*

Come along and judge for yourself  
10% discount on all Take-away meals

**Monday - Saturday  
6.00pm - 11.00pm**

9 Broad Street, Modbury PL21 0PU  
01548 831191





# The Royal Oak Bigbury

Telephone: (01548) 810313



Enjoy good homemade food in our cosy bar area or sit in the Lounge or Restaurant areas and choose from either the bar menu or our a la carte specials board. We provide only the best quality food - all freshly cooked on the premises and at reasonable prices.

Open for meals 7 days a week, lunchtimes and evenings. Choice of 3 real ales, all served direct from the cask. Full range of keg lagers and bitters.

Refurbished en-suite accommodation. Large car park and garden.

*Please remember that we are very busy during the evenings so it is always advisable to book your table in advance*

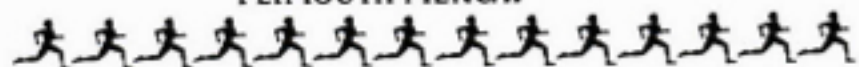
## DIARY FOR JUNE/JULY

**Sun 30th May** CHRISTENING - EMILY PAGE WORTHINGTON

**Wed 2nd Jun** R.B.L. Meeting 7.30pm

**Tue 15th Jun** FUN RUN STEWARDS meeting

**Sat 19th Jun** BARN DANCE at FOLLY FARM in aid of PLYMOUTH MENCAP



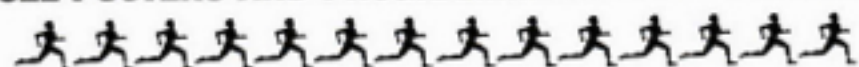
## BIGBURY FUN RUN WEEKEND



### 25/26/27th JUNE



SEE POSTERS AND PROGRAMME FOR FULL DETAILS



**Sat 10th Jul** BARN DANCE at FOLLY FARM in aid of DAME HANNAH ROGERS SCHOOL

**Sat 17th Jul** FUN RUN PRESENTATION

*Enigma*

## Last Month SOLUTION

Touring the United States is obviously preferable to finding meaningful sequences. Meaningful to whom? This question is still vexing some of you. Move on, life is too short.

Correct answers were received from New Dawn, Yapping Dogs (good to know they are in fine voice) Champion Opals, Champion Matchman and Taurus whose entry should be hung in Tate Modern. Three points to you all.

## This Month

This month's puzzle is another numbers game, this time using the numbers 1-9. The task is to set them out using arithmetical symbols so that the answer to the sum is 100. One way of doing this is as follows:

$$1+2+3+4+5+6+7+ (9 \times 8) = 100$$

The challenge is to find twelve different ways of setting the numbers out, in the rising sequence, i.e. 1-9, using *only* plus or minus signs, no decimal points, no division, no multiplication, no square roots, etc., only Plus or Minus. Is that clear? Every time the answer must be 100.

Another example:

$$123-4-5-6-7+8-9 = 100.$$

Now there are just eleven possible options. Another example? No.



## Ringmore WI



**WI Hall and Grounds  
Wednesday 9th June  
6.30pm**

**Adults £3.50 Children £1.50**  
to include

**Cakes - Cheese - a Glass of Wine**  
special raffles

**Residents and Holidaymakers all welcome**

## SCYPEN

We will be opening our garden at Scypen under the National Gardens Scheme on Sunday 20th June and Wednesday 23rd June 2004 between 2.00pm and 5.00pm. Admission is £1.50 for adults, 50p for children, plants and teas will be available for sale and all proceeds will go to the charities supported by the scheme, predominantly for nursing and caring. **Sorry, no dogs please.** The garden will also be open on Saturday the 26th June under a separate scheme for the special opening of 250 modern gardens nationwide in celebration of the bicentenary of the Royal Horticultural Society, same times, admission prices etc. It has been a few years since this garden has been open to the public and there have been a few changes that may interest previous visitors.

The websites for both schemes are

[www.ngs.org.uk](http://www.ngs.org.uk) and

[www.moderngardens.org.uk](http://www.moderngardens.org.uk)

John and Ann Bracey

Would you like a



# CREAM TEA?

Jane Guy invites you to

The Lodge

to view the garden and to have a

CREAM TEA

2.00pm - 6pm

Saturday 26th June

£5.00 (garden only £2.00)

Parking nearby

All proceeds to the **National Society for Epilepsy**