

## Mobile Library

Friday:- 14th & 28th

Ringmore Church  
12.05 - 12.30

Challaborough  
12.35 - 12.45

St Ann's Chapel  
3.15 - 3.30

Kingston Fire Stn  
3.45 - 4.30

## February 2003

Issue Number 211

### DEADLINE

→ Sunday 23rd ←

Editor: Geof Dykes 810123



Last  
Month 4"

Average - last 10 years - 5.5"

High - 1996 - 7.5"

Low - 1993/97 - 1"

Rainfall - Fiona Batten

# RINGMORE

## PARISH NEWSLETTER

*January gave us a reasonable amount of rain interspersed with some beautiful spring-like days, even some shirt-sleeve weather. However a reminder of Winter is on the way!*

*There have been some disturbing activities around the village after dark in the last few days. Two cars were broken into, at Mayfield and Challaborough Cottage. Spare a thought for Debbie & Peter and John Tagent who have suffered the consequences of this thieving. Yes, it is only a car but there are jumbled emotions to be soothed.*

*There will be a Coffee Morning at the Korniloff in Bigbury-on-Sea on 5th in aid of a charity Medic Malawi which does its work in Africa. If you have time to spare and want a morning out, why not make the excursion?*

*The Inter-Parish Quiz is upon us again and Ringmore are away to Newton & Noss on Tuesday 4th. If anyone would like to support the team, which would be very encouraging, the match starts at 8.00pm in The Dolphin*

*Inn at Newton Ferrers.*

*The Historical Society has an open meeting on 12th of this month with a talk on 'The Brookes of Sarawak'. This is a fascinating story of an English family who were appointed as rulers by the locals and retained their prominence for over 100 years. The society will welcome anyone who wishes to hear this interesting tale.*

*On 26th, there will be a Whist Drive in the WI Hall. These occasions are always informal and well-suited to anyone who would like to come but feels that their skill at cards is not good enough. If you know how to shuffle you are good enough and will be welcomed.*

*If you enjoy table top games such as Shove Ha'penny, Table Skittles, Quoits etc., there will be an opportunity to try them all in March. It will be an evening of fun-venue to be announced.*

*Everyone will be delighted that Mark and Amanda Genders have little Charlotte back home, making splendid progress.*

## FRIENDS & NEIGHBOURS

*Some of our number have been struck by various ailments recently. Phoebe, Fona Batten's Mum, broke her wrist which is now mending; Gillian Parkin felt it necessary to desert James' quiz team at the Ps & Qs, which was bad for them but the right thing for her. She too is back to form. Finally, Yvonne Shepherd was laid low by pneumonia but is slowly recovering. We wish them all a speedy return to full health. Not every problem is seasonal but it is 'that time of year' so let us watch out for our neighbour with even greater diligence than usual.*

*Please send items for inclusion in the Newsletter to:*

**The Editor**

**Ringmore Parish Newsletter,**

**Ringmore Vean, Ringmore, TQ7 4HL**

*or put them through the letter box in the garage door*

*email: news@ringmore.com*

## Diary for the Month

MONDAYS: Short Mat Bowls 7.30pm Parish Room

TUESDAYS: Table Tennis Parish Room 7.30pm

THURSDAYS: Quiz Night 9.00pm Journey's End

4th Inter-Parish Quiz Newton & Noss v Ringmore

The Dolphin Inn Newton Ferrers 8.00pm

5th Medic Malawi Coffee Morning at The Korniloff 10.30am

RBL meeting at the Dolphin Inn, Kingston 7.30pm

12th RHS meeting WI Hall 7.30pm

13th WI meeting WI Hall 8.00pm - talk by Mr Eric Wallis

'Devon & Cornwall's Walking Policemen'.

18th Parish Council meeting WI Hall 7.00pm

Table Tennis AGM Parish Room

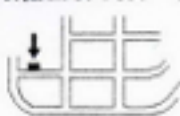
26th Whist Drive WI Hall 7.30pm

March

5th RBL meeting at the Royal Oak 7.30pm

## POST OFFICE STORES

Daily Deliveries Bigbury-on-Sea 810274  
POST OFFICE - GROCERIES - BREAD - DRY CLEANING  
CONFECTIONERY - PHOTOCOPYING - STATIONERY - VIDEOS  
NEWSPAPERS - MILK & CREAM - FRUIT & VEGETABLES  
CREAM BY POST - FRESH LOCAL MEAT - WINES & SPIRITS



Car Park

Stores open: 9.00am - 5.00pm  
Except Tuesday 9.00am - 1.00pm  
Sunday 9.00am - Noon  
Post Office open 9.00am - 1.00pm  
Monday, Tuesday, Thursday, Friday

Mick & Carolyn Hunt

All orders promptly serviced & despatched. Friendly & courteous service

## Rob Batten Car Sales



Quality cars to suit all pockets  
My prices can't be matched



Phone for a chat  
810680

## Nicholas HAIR & BEAUTY

8 Church Street, Modbury  
South Devon Tel: Modbury 830152  
Ladies' & Men's Hairdressing & Beauty Salon

or at Marine Hotel, Salcombe, South Devon Tel: Salcombe 843370

### DAY OF BEAUTY

A relaxing and recharging day pampering at the luxurious Marine Hotel; including sauna, swim, solarium, spa bath, full body massage, full Sothys facial. Light lunch in the hotel lounge or restaurant followed by manicure,

## NIGEL FROST

BSc(Hons)

Optometrist

FC Optom

Chene Court, Modbury  
next to car park

01548 830944

Open Weekdays and Saturday Morning  
Contact Lenses, Spectacles, Accessories  
Complete Eye Examination

## A M KING & SONS

Registered Builders

Internal & External Decorations

uPVC Windows & Fascias

Extensions/Conversions

New Kitchen  
or Bathroom

810570



Residential  
Care Home

Prop: Gina & Gordon Phillips

## KORNILOFF

Overlooking Burgh Island

A Family-run Home NVQ trained staff

24 hour Care, Home cooking, Special diets catered for,  
Stair Lift, Hairdresser, Chiropodist, Bath Hoist if needed  
Large Single, Double or Twin rooms by choice. Some en-suite

Your Dignity and Privacy is paramount  
Transport can be provided by arrangement  
Devon County Council registered

Warren Road, Bigbury-on-Sea, Devon TQ7 4AZ  
Telephone: 01548 810222

## The Oyster Shack

Seafood, salads,  
sandwiches

Bring your own wine -  
we supply the glasses

Booking  
advisable

Stakes Hill, Bigbury  
Tel: 01548 810876

### Winter Opening

January - April 30th

Lunchtime

Monday, Thursday,  
Friday

Saturday, Sunday

Evenings

Saturday

Closed

Tuesday & Wednesday

## Rob Batten Car Sales



Quality cars to suit all pockets  
My prices can't be matched



Phone for a chat  
810680

## Nicholas HAIR & BEAUTY

8 Church Street, Modbury  
South Devon Tel: Modbury 830152  
Ladies' & Men's Hairdressing & Beauty Salon

or at Marine Hotel, Salcombe, South Devon Tel: Salcombe 843370

### DAY OF BEAUTY

A relaxing and recharging day pampering at the luxurious Marine Hotel; including sauna, swim, solarium, spa bath, full body massage, full Sothys facial. Light lunch in the hotel lounge or restaurant followed by manicure,

## BIGBURY SHOP & POST OFFICE

Daily Deliveries - No order too small - Just give us a ring

Bread + Fruit & Veg + Milk & Dairy Products

Newspapers & Magazines

Best Back Bacon + Ham + Tongue + Cheese

any amount cut

SHOP  
Daily 8.00am - 4.00pm  
Sunday 9.00am - 1.00pm  
01548 810213

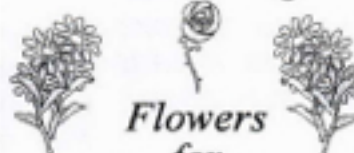
Aune Valley Meat  
Color Gas & Coal  
John & Margaret Inman

POST OFFICE  
9.00am - 1.00pm  
Monday to Friday  
01548 810213

Wedding Bouquets  
Funeral Tributes



"Rosemary"



Flowers  
for  
all occasions

1 Broad Street  
Modbury  
Tel 01548 830048

## THE BAKERY

Fresh Bread  
Daily



Fresh Sandwiches,  
Hot Snacks, Cakes,  
Tea & Coffee

Broad Street, Modbury  
Tel: 01548 830216

## HIRAM BOWDEN



Repairs  
Servicing  
MOT

Cars collected & returned  
Tel: 550129  
Evening 01752 896065

## Jinny McCabe Wedding Florist

Bouquets

Church & Marquee  
Decoration

Foxhole  
Dukes Mill, Bigbury  
Kingsbridge, TQ7 4LJ  
Tel: 01548 810538

# NEWS FROM ALL HALLOWS

## FEBRUARY SERVICES

### Ringmore

- 2<sup>nd</sup> 11.00a.m. Family Service  
9<sup>th</sup> 9.00a.m. Communion  
16<sup>th</sup> 6.00p.m. Evening Prayer  
23<sup>rd</sup> 9.00a.m. CW Communion



Avoid too many  
Church Committees

### Other Local Services

#### Bigbury

- 2<sup>nd</sup> TO MODBURY FOR  
COME & CELEBRATE  
9<sup>th</sup> 11.00 a.m. Family Service.  
18<sup>th</sup> 2.30 p.m. Korniloff  
Communion  
16<sup>th</sup> 9.00a.m. BCP Comm.  
23<sup>rd</sup> 11.00p.m. Family  
Communion

#### St James's Kingston

- 2<sup>nd</sup> 9.00 a.m. Communion  
9<sup>th</sup> 6.00 p.m. BCP Even Prayer  
16<sup>th</sup> 11.00 a.m. Family Service  
(with Children's Club)  
23<sup>rd</sup> 6.00 p.m. Even. Prayer



Avoid too many communions

## **Celebrations of Life**

It seems rash to have written in January 'I pray that 2003 will be better for you all... I promise that if you allow Jesus to take his place you will master events'. The three villages especially Bigbury and Kingston have seen sad, and in some cases early death in these first weeks of 2003 with funerals celebrating lives and mourning parting.

Often we forget the contributions made to village life by folk like the late Dorothy Buck who lived her last few year's away from Ringmore. Many were wondering who had died in the village when they saw the new grave being dug. Well not exactly 'new', a return to roots to be with her late husband in the Church that had been part of their family life. It was good to see her daughters Sylvie and Wendy reminiscing in the Journey's End after the funeral. There was talk of her Dad's butchers shop at St Anne's, and of Dorothy teaching Ella, then a newly wed, how to make gravy the Devon way.

In Kingston we had the deaths of Ron Robinson, Flo Rogers and Val O'Rourke. Val was one of our bell-ringers and had a sudden stroke, she had no time to prepare for an early departure to the bell tower in the sky. (*No I don't really know if there are bells in heaven!*) At Bigbury after a long illness Roland Smith, my old colleague in Lloyds Bank, has died. Some of us will be scared of dying, others will have a serene assurance of their place in heaven. Others may not be so serene, yet they will have a conviction that the Son of God came to get us to a much better place, bells or no bells! My Dad wants life to a ripe old age, and departure in particular circumstances. At 89 he still manages a few holes of golf, hoping to win his final match then drop between course and club house. "So I won't have to buy the blighter a drink". It is not death that frightens him, but it is the manner of dying.

Few of us will be ready for the physical and mental end, but I pray that we will all be ready spiritually and in the meantime I pray that God will fulfil the promise of the Bible and comfort those who mourn. (*John Elliott, 810565*)

### **Pulpit Joke of the Month**

*It really happened. The Bishop of Maidstone was on a trip to London, and the only seat was in a compartment with the residents of a local home for those with mental difficulties. He enjoyed lively if surreal conversations with them as they travelled. On arrival at Waterloo, they were met by a Minder who knew most of the residents. He proceeded to check that they were all there. 1-2-3-4-5- "Who are you?" - "I'm the Bishop of Maidstone" - --6-7-8-9!!*

# M and J P Builders

All types of building work undertaken

New Buildings

Renovations

20 years experience in Building Trade

For FREE Estimates and Advice please phone 810633

# PORTUGAL

HOLIDAY APARTMENT  
near TAVIRA

TWO BEDROOMS  
SLEEPS 4

30 minutes from Faro airport  
Cheap flights from Bristol

Prices: from £170

Contact: 01548 810513

# Nigel Walton

Computers built to exacting requirements  
Almost trade prices  
Upgrades, Processors, Hard Disks, and Software solutions  
No job too small



Lousown

Folly Hill

Bigbury-on-Sea

Tel 01548 810767

# Modbury Pharmacy Ltd

7 Broad Street, Modbury, PL21 0PS  
Tel/Fax: 01548 830215

'Improving the health and well-being of the community'

At Modbury Pharmacy we offer a full range of medicines and Health & Beauty products at very competitive prices.

Our friendly pharmacist is always available for professional advice on prescribed and purchased medicines.

OPEN: Mon - Fri 9.00am - 6.00pm Sat

# TILLY DOWNING B.Sc. Pod., M.Ch. S.

STATE REGISTERED CHIROPODIST



Surgery or Home Visit  
Three Years Training

Safe & Thorough

The Laurels, Fore Street, Aveton Gifford

Tel: 01548 550072

Opposite the Memorial Hall Car Park



Avon Bridge Aveton Gifford

550880

## SALES SERVICE SPARES

For all your Garden Equipment  
Give us a call

QUALITY MACHINERY AT THE RIGHT PRICE



# Julie

Fully Qualified  
810634

Mobile  
Ladies & Gents  
Hair-stylist



# SANJIDA

Modbury's Gold Award-winning  
Indian Restaurant & Take-Away

Come along and judge for yourself  
10% discount on all Take-away meals

Monday - Saturday:  
6.00pm - 11.00pm

9 Broad Street, Modbury PL21 0PU  
01548 831191

# Kevin Light

PLUMBING & HEATING  
CORGI & A.C.O.P. Reg.

Wychbury  
Ringmore Drive  
Bigbury on Sea

Tel 01548 810726  
Mobile 07721 955506

# FOR 'REAL' CHEESE & WINE

**MACKGILLS**

+ Handcut Farmhouse English & Continental Cheese

+ Home-cooked Ham & Salamis

+ Home-cooked Pies & Cakes etc.

+ Wine, Beer, Sherry & Cider ... and much more



**DELICATESSEN**

Telephone Enquiries Welcome

4 Church Street, Modbury, Devon PL21 0QW  
Telephone: Modbury (01548) 830860

# Journey's End Journal

Things have steadied down at the JE now that the New Year mayhem is behind us. Thank you all for your support and enthusiasm over the last month, it has kept our spirits high over what have been all too frequent hiccups. We now have some time to take stock and get all the loose ends tied up to our satisfaction. We have achieved a lot with the tremendous assistance of Yogi, however, as ever, we still have a long way to go (we keep running out of brass!).

## TOO MUCH FOR TOO FEW?

We would like to thank Mark and his staff for a wonderful Burns Night.

The meal served was outstanding and what's more, accompanied by pipers!

It was a shame that very few people were there to appreciate it.

Once again, many thanks.

Yogi & Annie

## Ps and Qs

Thanks to a splendid turnout, this year's brain-teasing supper in the Parish Room was a resounding success - so I am told.

As always, tickets went slowly at the beginning but sales gained momentum and in the end 71 quizzers turned up.

Last year when the first thoughts for the third of these biannual evenings took shape we made the disquieting discovery that our source of pasties was in doubt because production had changed to minced beef! Obviously this was not a popular move and we were pleased and relieved to learn later that they had reverted to the traditional filling.

Anne prepared soup until it was coming out of her ears, but we were all grateful for her efforts.

Questions were prepared, 190 in total, no duplication and most of them with the correct answer.

The teams were competitive from the start but the pattern became clear almost at once. The Seven Samurai were hotly pursued by Seven Eights but the former led by Dennis Collinson gradually extended their lead which they held to the end. James Parkin lead his team comprising Them & Us from Thursday

This month heralds the start of the six-nations tournament, which will see the grand re-opening of the "debutante lounge" in the snug bar for anyone who has nothing better to do of a Saturday afternoon. We also have a Valentines Dinner in the refurbished restaurant, this will be a three course meal for £11.95 pp, please see the menu board outside for details.

As many of you have noticed there have been a few new faces behind the bar, we have been actively recruiting for most of January, and are continuing to do so, please bear with us as new faces come, and go. We are only trying to find the right people to turn the pub back into a local to be proud of!

I would also like to take this opportunity to say how touched my wife and I have been with all the kindness we have been shown over the last month in regards to our daughter Charlotte, who is now home, and although monitored carefully, making a tremendous recovery.

Mark

nights at the JE and the Mayfielders in what became a vain chase. Sadly Gillian was not able to contribute to the evening, an absence from which the team obviously suffered. The winners, comprising Dennis and Di, Paul and Fiona from Hideaway Cottage, Andrew Hitchmough from Well Cottage, James Stevenson and Kate Knowles from Brockenhurst (Kate's husband Tim was in another team) won the first prize. This is an interest in two Lottery tickets for eight draws. There is a clause in the contract which ensures that the Parish Room shares in any large prize. One ticket has already won £10!!

Optimistic Guys organised by Jane, won a very competitive battle to finish last!

Some who came would enjoy a quiz at the drop of a hat, some are happy to come but not every week and the rest came to support the fund-raising purpose of the evening. 'Thanks' to all of you for helping to raise just under £300 for the Parish Room.

Thanks are due also to a number of people, particularly Alan and Robbie McCarthy. Not only did they do the bulk of the clearing up on the Saturday morning with help from Dennis Collinson and Andrew Hitchmough but they also heated most of the pasties!

Incidentally Rowlands Castle is in Hampshire and of course Malaysia borders Thailand. Everyone knows that, even I do now!

GDD



Tel 01548 810205

Monday - Saturday

Noon - 3.00pm

6.30pm - 11.00pm

Food: 12.30pm - 2.30pm & 6.30pm - 9.00pm

Sun: Noon - 10.30pm

Food: 12.30pm - 3.30pm

Sandwiches & Pizzas in the evening



WOMEN IN THE COMMUNITY

The January meeting was well-attended despite the cold and the familiar 'bad time of year' feeling!

However the anticipated speaker, Alison Armer, on the work of the NSPCC, was unable to come. Her place was taken by member Jane Guy, who gave a most entertaining and informative talk about her Craft work. Members were very appreciative of her ability to step in at the last minute, as well as of her accomplishments.

The next meeting will be on 13th February at 8.00pm when Mr Eric Wallis will talk on Devon & Cornwall's Walking Policeman.  
Naomi Warne

## TEN YEARS AGO ...

The subject of the WI talk was the Hawaiian Islands.

The Rev Arthur Drowley wrote of the difficulty of following a religious service in the Spanish language, encountered during his time in Lanzarote.

Parish Council - a start had been made on the access road from Bigbury to Challaborough to obviate the need for large caravans to pass through Ringmore - work was in progress to improve the access to the National Trust Car Park - work was in progress on the sewerage Works as well as the access road from Lower Manor Farm.

Beer was £1 per pint at the Journey's End throughout February!

## Wild Goose Antiques

"Come and have a gander"

Old Pine  
Country Furniture  
Decorative Items



Interesting items purchased

Open: 10.00am - 5.30pm Monday to Saturday  
34 Church Street, Modbury  
Tel: 01548 830715

## BARDENS GARAGE

BIGBURY

Servicing - MOT Welding

Mechanical Repairs - Accident Repairs

Bodywork - Repairs

Breakdown - Accident recovery available

01548 810627      07887

Proprietor: E Nicklen      610247

## SHEPPARDS

Chartered Accountants

Your Local Accountants

Call Ian or Yvonne Sheppard  
on (01548) 810341 or (01752) 220333  
fax (01752) 221742

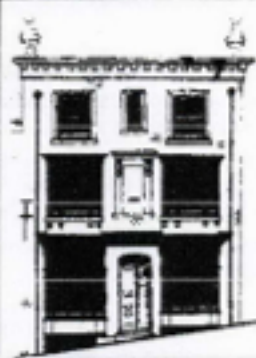
[www.sheppardsaccountants.co.uk](http://www.sheppardsaccountants.co.uk)

Free initial interview & Free Parking

1 Addison Road, North Hill

Plymouth PL4 8LL

Full Accountancy & Taxation Service



## DEVONSHIRE FINE ART

Antique Watercolours, Oil Paintings,  
Drawings, Maps and Prints.

Local Watercolours & Prints.

Quality Picture Framing Service.

9 Church Street, Modbury,

Devon PL21 0QW

Telephone/Fax: (01548) 830872.

## CHALLABOROUGH LUXURY MOBILE HOME

SLEEPS SIX

£150 - £400 PER WEEK

Full use of all facilities at  
the holiday park

NO SMOKING - NO PETS

For full details phone 01548 810673

Don't let the fear of flying STOP you having a holiday -  
the whole of Europe is just across the English Channel!

HOLIDAYS for all, by ROAD, RAIL and SEA  
in the UK, Ireland and Europe

and  
The rest of the world BY AIR

**FARE DEALS TRAVEL SERVICES**

01548 810869

[www.travel-mouse-travel.co.uk](http://www.travel-mouse-travel.co.uk)  
[admin@travel-mouse.co.uk](mailto:admin@travel-mouse.co.uk)



# HOLYWELL STORES & POST OFFICE

01548  
810308

ST ANN'S CHAPEL

01548  
810308

## POST OFFICE COUNTER HOURS

MONDAY TO FRIDAY 9.00AM - 1.00PM

Free Personal Banking Services for Lloyds/TSB, Barclays, Co-Op, Cahoot, Smile

No-commission Foreign Currency Exchange - Bunches of Flowers by post  
and Much Much More

## SHOP OPENING HOURS

MONDAY TO SATURDAY 7.00AM - 6.00PM

SUNDAY 8.00AM - 5.00PM

CREDIT AND DEBIT CARDS NOW ACCEPTED - NO MINIMUM FEE

Now stocking a Wide range of Local Cheese

(including Sharpham and local goat and sheep cheeses)

Fresh Daily Bread - Organic Vegetables - Groceries - Frozen Foods

Local Fresh Meat and Dairy Produce - Local Potatoes £4.00 per sack

Newspapers & Magazines - Coal - Logs - Phurnacite - Calor Gas - Off Licence

Local Agent for Air Ambulance Lottery

CASH MACHINE & MOBILE PHONE ELECTRONIC TOP-UP

Even this space is available

## Royal British Legion

Bigbury Kingston Ringmore

There was no meeting in January. Our February meeting will be at the Dolphin Inn, Kingston on Wednesday 5th February at 7.30pm, the speaker will be John Bracey and the March meeting will be at the Royal Oak on Wednesday 5th March at 7.30pm where the speaker will be Dane Vanstone.

All members of the 100 Club are reminded their subscriptions are due.

Robbie McCarthy  
Hon Secretary

## THE MILLENNIUM CONTINUED Church Clock

As we start February 2003 it is hard to realise that the saga of the clock had its beginning 5 years ago, when ideas were sought on how to commemorate the forthcoming Millennium. A clock was one of the suggestions.

We are not quite there yet and I have no intentions of being any more than, slightly optimistic at this stage. It is hoped that the Diocesan Advisory Committee at Exeter will shortly grant us a Faculty: that is their approval for us to proceed.

We then get the clock maker to do a survey and if all is well, we place our order and it will take 4-6 weeks to fulfil.

More than half of the cost has been promised and it is anticipated that we will need to find about £1800 to complete the work.

This information is deliberately vague but is intended to let you know that progress is still happening. By the time the next newsletter appears in March I really hope to be able to present you with FACTS, and then ask for your help.

Guy Eddy  
Millennium Committee

## RINGMORE PARISH COUNCIL

Meeting: Tuesday 17th December 2002  
Present: Five councillors; the Clerk;  
Mr Guy Eddy, Millennium Committee  
Mr David Young, Neighbourhood Watch

### Clerk's Salary

After discussion it was decided to increase the Clerk's salary to £150 per quarter, with effect from 1st January 2003.

### Finance

Internal Audit charges for 2001-02 £28.  
WI Hall charges for 2001-02 £242.50p.

### Footpaths

Mr McCarthy is completing a survey for the Parish Partnership Scheme (P3).

### Millennium Clock

The meeting with the Chairman of the Parochial Church Council, Rev. Elliott, resolved the matters under discussion. Mr Eddy is now awaiting the decision of the Diocese.

### Car Fare Scheme

Mr Carson sent word that, so far, twenty-seven people had registered with Fare Car. Details of all public transport services throughout the South West can be obtained from Traveline, 0870 608 2608.

### Annual Parish Meeting

This will be held on Wednesday 30th April at 7.30pm.

### Next Meeting

Tuesday 18th February at 7.00pm  
Thelma Mann

*Flete House*

**Isla St Clair**

*In concert*

*Friday 21st February*

*8.00pm*

*£10.00 with light refreshments*

**Reservations: 01752 830308**

## RINGMORE HISTORICAL SOCIETY

Wednesday 12th February

7.30pm

WI Hall

**The Brookes of Sarawak  
and Sheepstor**

*Illustrated Talk by  
Mr Roderick Martin*

The Brooks family ruled as Rajahs of Sarawak for over one hundred years and are buried in the little churchyard at Sheepstor on Dartmoor. Roderick Mann, who worked as a Chartered Engineer in Sarawak in the 1980s explains how this came about.

In 1997 the RIES visited the church in Sheepstor

**Everyone is welcome to come  
along to enjoy the evening.**

**Members £1.50**

**Non-members £2.00**

**Refreshments included**

**WI HALL  
RINGMORE**

**WHIST  
DRIVE**

Wednesday

26th February

7.30pm

**Raffle - Prizes  
Refreshments**

Admission £1.50

**NEIGHBOURHOOD**  
Unfortunately  
it has not been a  
good start to the year.  
Reference to the reported  
incidents appears on the front  
page.  
You are urged to  
re-examine all your  
precautions.  
**WATCH**



If anyone would like to play the organ  
for

**Methodist Services**

in the area  
please contact

**Christine Freeman**

810255



**The Royal Oak**  
**Bigbury**  
 Telephone: (01548) 810313



Enjoy good homemade food in our cosy bar area or sit in the Lounge or Restaurant areas and choose from either the bar menu or our a la carte specials board. We provide only the best quality food - all freshly cooked on the premises and at reasonable prices.

Open for meals 7 days a week, lunchtimes and evenings. Choice of 3 real ales, all served direct from the cask. Full range of keg lagers and bitters.

Refurbished en-suite accommodation. Large car park and garden.

**BOOKINGS ARE NOW BEING TAKEN FOR VALENTINE'S NIGHT DINNER**

**DIARY FOR FEBRUARY/MARCH**

- Fri 31st Jan** Darts - home v Anchor
- Fri 7th Feb** Darts - away v Volunteer
- Fri 14th Feb** Valentine's Night Dinner
- Fri 21st Feb** Darts - away v Union B
- Fri 28th Feb** Darts - home v Sportsmans B
- Sat 1st Mar** Birthday party for Tina and Roy - live music and comedy
- Wed 5th Mar** R.B.L. meeting
- Fri 7th Mar** Darts - away v Modbury Club

**WATCH OUT FOR OUR MASSIVE MARCH MADNESS PROMOTIONS, STARTING MONDAY 3rd MARCH**

THANK YOU TO EVERYBODY WHO SUPPORTED US THROUGHOUT 2002 & WE LOOK FORWARD TO SEEING CUSTOMERS BOTH OLD AND NEW DURING 2003

**TABLE TENNIS**

The Table Tennis Club has now been running for two very successful years since its Constitution and Committee were formed. Our second Annual General Meeting will be held in the Parish Room on Tuesday 18th February, during the playing session refreshment break. It is hoped that all members can attend.

New members will be most welcome and of course, it is especially beneficial to those proposing to enter the John Bracey Trophy, to be held in the Journey's End in March.

Come along on Tuesday evenings, exercise in good company and have good fun: all standards catered for.

Phill Errett  
 Chairman 810547

**MEDIC MALAWI**

DO NOT FORGET  
**Coffee Morning**

at the  
**KORNELOFF**

Wednesday 5th February  
 10.30am

This event will raise much-needed funds for this Charity which operates in Malawi.

Pat Prior from Challaborough will be present to talk about the Charity's work in Africa.

*Enigma*

**January SOLUTION**

The letter ladder did not defeat anyone but some were more right than others. The Opals, The Beginners, Taurus and Gemini submitted correct solutions but Champion Matchman and Easter Bunny completed the ladder but were one rung short. Seven intervening words were required. That means that only two points can be awarded to our Champion and to the Easter Bunny; three to everyone else.

The solutions offered were varied: some weeds, and needs: some trams and grams: some brads, some grads and a lot of brass! It's a healthy start to the year and there is plenty of time for old friends to return.

**February**

1	8	9	7		4	9	5	4
3		6	1	3	5	1		3
9	2		2	9	5		2	5
2	9	7		2		5	9	2
	4	5	4	9	1	5	4	
1	5	2		8		4	5	5
1	1		8	5	4		1	6
3		4	9	5	5	4		9
2	9	5	4		2	6	3	4

Substitute the numbers above for one of the three corresponding letters in the grid below. A number is not consistently the same letter.

1	2	3	4	5	6	7	8	9
A	B	C	D	E	F	G	H	I
J	K	L	M	N	O	P	Q	R
S	T	U	V	W	X	Y	Z	X

Music  
 at the  
**Paddock**

**Frank &rina**

Monday at 7.30pm  
 Feb 17th  
 Mar 17th