

Mobile Library

Friday: 4th & 18th

Ringmore Church
12.05 - 12.30

Challaborough
12.35 - 12.45

St Ann's Chapel
3.15 - 3.30

Kingston Fire Stn
3.45 - 4.30

JANUARY 2003

~~December~~ 2002

Issue Number 210

DEADLINE

Sunday 26th

Editor: Geof Dykes 810123



Last
Month 6"

Average - last 10 years - 5"
- 8%
High - 1999 - 2%
Low - 2001
Rainfall - Fiona Batten

RINGMORE

PARISH NEWSLETTER

HAPPY NEW YEAR

The holiday is over and we must turn our thoughts to making 2003 a year to remember.

The new Fare Car, the transport system intended to make up for the desultory bus service in the area has started. Details appear elsewhere.

Adrian Muller has resigned from the Parish Council in anticipation of his departure from the village in due course. Adrian has been a member for seven and a half years and for much of that time has made the village footpaths his responsibility. Quietly he has maintained the paths so that we can have a pleasant walk around the parish whenever it suits us. For that he deserves the gratitude of everyone who has walked these routes. Alan McCarthy has offered to assume Adrian's role but he does not wish to join the Council. It is good to know that the work will be in capable hands.

January is often a quiet, grey month so the Ps & Qs evening will give us the opportunity of getting out and having a fun evening for the benefit of the Parish Room. Tickets are going well but there are some left. Please make the effort to come, it will be

an enjoyable evening with friends!

On the subject of fundraising, there will be another social evening in March with some wine and nibbles and a few table top games such as quoits, skittles and the like. More of that later.

Now is a good time to thank the Newsletter distributors for their work in bringing the RPN to you every month, come rain or shine. Thanks, too, to those who occasionally deputised and to those who are on standby!

The Newsletter is supported by advertisers who place their adverts more as a gesture rather than in the hope of making their fortune. There is an annual turnover as some drop out and, fortunately, others take their place. This year is no exception so please take a moment to check the new ones which have appeared.

Finally the RCOMPUS (Ringmore Computers Users) will meet on Monday 20th January. Would anyone who wishes to come please ring 810123 as soon as possible. If everyone turns up it is possible that the usual venue will be too small and alternative arrangements will have to be made.

The change over at the Journey's End has finally taken place. Everyone will extend a warm welcome to Mark Genders, who will be the most visible face of the new owners, as well as to Mark Watson and Paul Clark who have been behind the bar in the past few days. Grahame finally 'got away' in mid-December and he went with good wishes for him and his family. It is a case of 'the king is dead; long live the king'.

Please send items for inclusion in the Newsletter to:

The Editor

Ringmore Parish Newsletter,
Ringmore Vein, Ringmore, TQ7 4HL

*or put them through the letter box in the garage door
email: news@ringmore.com*

Diary for the Month

MONDAYS: Short Mat Bowls 7.30pm Parish Room
TUESDAYS: Table Tennis Parish Room 7.30pm
THURSDAYS: Quiz Night 9.00pm Journey's End

- 11th Old Scottish New Year at the JE
- 15th Ringmore Historical Society talk at the Parish Room 7.30pm
- 20th RCOMPUS meeting 10.30am venue to be confirmed
- 21st Parish Council meeting WI Hall 7.00pm
- 24th Ps & Qs Parish Room 7.20pm
- 26th Burns Night at the JE
- 27th An Australian Day at the JE
- February
- 5th Medic Malawi Coffee Morning at The Kornloff 10.30am
RBL Meeting at the The Royal Oak 7.30pm

M and J P Builders

All types of building work undertaken

New Buildings

Renovations

20 years experience
in Building Trade

For FREE Estimates and Advice
please phone
810633

PORTUGAL

HOLIDAY APARTMENT
near TAVIRA

TWO BEDROOMS
SLEEPS 4

30 minutes from
Faro airport
Cheap flights from Bristol

Prices: from £170

Contact: 01548 810513

Nigel Walton

Computers built to exacting requirements
Almost trade prices
Upgrades, Processors, Hard Disks, and
Software solutions
No job too small



Lousown

Folly Hill

Bigbury-on-Sea

Tel 01548 810767

Modbury Pharmacy Ltd

7 Broad Street, Modbury, PL21 0PS
Tel/Fax: 01548 830215

'Improving the health and
well-being of the community'

At Modbury Pharmacy we offer a full range of
medicines and Health & Beauty products at
very competitive prices.

Our friendly pharmacist is always available for
professional advice on prescribed and
purchased medicines.

OPEN: Mon - Fri 9.00am - 6.00pm Sat

TILLY DOWNING B.Sc. Pod., M.Ch. S.

STATE REGISTERED CHIROPODIST

Surgery or Home Visit
Three Years Training

Safe & Thorough

The Laurels, Fore Street, Aveton Gifford

Tel: 01548 550072

Opposite the Memorial Hall Car Park



ADVERTISING SPACE IS ALWAYS AVAILABLE

THIS AREA FOR £1 PER MONTH

810123



Julie

Fully Qualified
810634

Mobile
Ladies & Gents
Hair-stylist



SANJIDA

Modbury's Gold Award-winning
Indian Restaurant & Take-Away

Come along and judge for yourself
10% discount on all Take-away meals

Monday - Saturday:
6.00pm - 11.00pm

9 Broad Street, Modbury PL21 0PU
01548 831191

Kevin Light

PLUMBING & HEATING
CORGI & A.C.O.P. Reg.

Wychbury
Ringmore Drive
Bigbury on Sea

Tel 01548 810726
Mobile 07721 955506

FOR 'REAL' CHEESE & WINE

MACKGILLS

Handcut Farmhouse English &
Continental Cheese

Home-cooked Ham & Salamis

Home-cooked Pies & Cakes etc.

Wine, Beer, Sherry & Cider...
and much more



DELICATESSEN

Telephone Enquiries Welcome

4 Church Street, Modbury, Devon PL21 0QW
Telephone: Modbury (01548) 830860

NEWS FROM ALL HALLOWS

JANUARY SERVICES Ringmore

- 5th 11.00a.m. Family Service
12th 9.00a.m. Communion
19th 6.00p.m. Evening Prayer
26th 9.00a.m. BCP Comm'n



Next time make the sermon funny!

(Inspired [!?] by the excellent Short Mat bowls club 'Pirates & Seafarers' evening in the Parish Room)

Other Local Services

Bigbury

- 5th 6.00 p.m. Even. Prayer
12th 11.00 a.m. Family Service.
15th 2.30 p.m. Korniloff
 Communion
19th 9.00a.m. BCP Comm.
26th 11.00p.m. Family
 Communion

St James's Kingston

- 5th 9.00 a.m. Communion
12th 6.00 p.m. BCP Even Prayer
19th 11.00 a.m. Family Service
 (with Children's Club)
26th 6.00 p.m. Even. Prayer

A HAPPY NEW YEAR

"Always look on the bright side"

It seems strange to write a New Year message just after leaving a joyful pre-Christmas service at Kingston. A baptism and the children in the choir were brilliant, even a little bit of movement and dance with their wonderful singing. Carols still need to be chosen for two more Services, and they will be over long before these words are read by anyone other than your faithful editor.

Too often I hear folk suggest that all became rosy when they became a Christian. On January 14th with Bob Campbell-Smith our team Rector, I will sit down with those who want to explore the meaning of "Confirmation". The ceremony when a Bishop lays hands on those who want to make an adult confirmation of their decision to walk with Jesus alongside them for the rest of their lives. The Bishop prays that the Holy Spirit will come upon those he confirms to equip them and energise them for whatever might be coming their way. Give me a ring if you are interested, as a teenager or an adult. No commitment at that stage just an exploration together. I am happy to give lifts if needed.

Some have had tough circumstances and events in 2002, I pray that 2003 will be better for you all. The year ahead will have its share of pain and disappointment, but I promise that if you allow Jesus to take his place you will master events; they will not master you. We only get to run this race once, so don't look back. You cannot change the past, but you can learn from it and be strengthened as you leave it. Focus on the next step, and then you will not stumble and get left behind.

(John Elliott, Church House Ringmore)

Apology & Correction

John's apology, correction and New Year's resolution. I am sorry that I put a dyslexic telephone number in the December News-Letter. If anyone wants a visit or home communion the number is 810565. I will try harder during 2003!

Wild Goose Antiques

"Come and have a gander"

Old Pine
Country Furniture
Decorative Items



Interesting items purchased

Open: 10.00am - 5.30pm Monday to Saturday
34 Church Street, Modbury
Tel: 01548 830715

BARDENS GARAGE

BIGBURY

Servicing ~ MOT Welding

Mechanical Repairs ~ Accident Repairs

Bodywork ~ Repairs

Breakdown ~ Accident recovery available

01548

07887

810627

Proprietor: E Nicklen

610247

SHEPPARDS

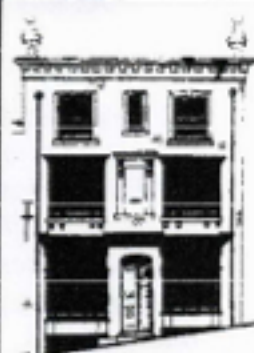
Chartered Accountants

Your Local Accountants

Call Ian or Yvonne Sheppard
on (01548) 810341 or (01752) 220333
fax (01752) 221742
www.sheppardsaccountants.co.uk

Free initial interview & Free Parking

1 Addison Road, North Hill
Plymouth PL4 8LL
Full Accountancy & Taxation Service



DEVONSHIRE FINE ART

Antique Watercolours, Oil Paintings,
Drawings, Maps and Prints.

Local Watercolours & Prints.

Quality Picture Framing Service.

9 Church Street, Modbury,
Devon PL21 0QW
Telephone/Fax: (01548) 830872.



PRE-TEXT

Graphics Design / Artwork
Flyers/Posters/Leaflets/Advertisements
Overhead Foils - Design & Preparation
Logo Design
All aspects of Desk Top Publishing

GEOF DYKES, RINGMORE VEAN, RINGMORE, TQ7 4HL
TEL 810123

Don't let the fear of flying STOP you having a holiday -
the whole of Europe is just across the English Channel!

HOLIDAYS for all, by ROAD, RAIL and SEA
in the UK, Ireland and Europe

and
The rest of the world BY AIR

FARE DEALS TRAVEL SERVICES

01548 810869

Travel Agent for AGL holidays

www.travelmouse.linet.co.uk
amr@fareo@tntatso.co.uk



HOLYWELL STORES & POST OFFICE

01548
810308

ST ANN'S CHAPEL

01548
810308

POST OFFICE COUNTER HOURS

MONDAY TO FRIDAY 9.00AM - 1.00PM

Free Personal Banking Services for Lloyds/TSB, Barclays, Co-Op, Cahoot, Smile
No-commission Foreign Currency Exchange - Bunches of Flowers by post
and Much Much More

SHOP OPENING HOURS

MONDAY TO SATURDAY 7.00AM - 6.00PM

SUNDAY 8.00AM - 5.00PM

CREDIT AND DEBIT CARDS NOW ACCEPTED - NO MINIMUM FEE

Now stocking a Wide range of Local Cheese

(including Sharpham and local goat and sheep cheeses)

Fresh Daily Bread - Organic Vegetables - Groceries - Frozen Foods

Local Fresh Meat and Dairy Produce - Local Potatoes £4.00 per sack

Newspapers & Magazines - Coal - Logs - Phurnacite - Calor Gas - Off Licence

Local Agent for Air Ambulance Lottery

CASH MACHINE & MOBILE PHONE ELECTRONIC TOP-UP

Even this space is available

Journey's End Journal

We have had our first two weeks of running the Journey's End now, and it has been an enjoyable ride so far! I would like to take the opportunity to thank ALL the people in the village and local community for the tremendous support and encouragement we have been receiving. As you may know, we have had a tremendous amount of work to do - and it is uplifting to hear that the efforts are well received. (Please keep the support up, as we still have a lot of work to do behind the scenes before the pub will be in the kind of order that we are aiming at!).

We are currently recruiting several positions to assist in the things we are aiming at - some full time, some part time. So if anyone is interested (or know

Ps and Qs

Friday 24th January is the day, or night to be precise and how you quizzers love to be precise! OK, so it's evening.

Tickets are now available. Please call 810123. The cost of £6.50 will include hot soup and a traditional Pasty. Everything for the evening will be provided except for alcohol. Please bring your own.

Much of the above was printed last month but it bears repetition. The response to date is encouraging. I know a number of you have asked for tickets and if you do not receive them by 14th January please remind me. I would not want anyone to be overlooked. Several people have gathered powerfully knowledgeable groups around them but no one should be put off by this obvious attempt to win. The questions may not match their knowledge!!

Even if quizzes are not your favourite entertainment, please remember that it is a fund-raising evening for the Parish Room and what better way to do it than to have fun among your friends!

Your starter questions are:-

- 1 Who was Prime Minister when the first prisoners arrived in Botany Bay?
 - 2 Which country has a capital city called Yerevan?
 - 3 Who was First Lord of the Admiralty at the beginning of WWI and also WWII?
- A fourth will be on the ticket.

In the middle of all this outpouring of knowledge, we will have soup and pasties. If anyone has a vegetarian preference please let me know. Water will be provided for those who do not wish to drink alcohol.

Ring now to secure your seat. Please note that the evening will start at 7.20pm.

GDD

of a person who may be) in doing work (probably part time), please let us know. We are planning to need a large pool of people to help us out as the trade grows! On the recruitment note - we are keeping up the Thursday night quiz - but are aiming at increasing numbers (we will start doing some baskets of chips etc, to make the experience more acceptable for those teams who don't come first...). To help in this we need volunteers to be 'Quiz Masters' for the night - producing a list of 50 challenging questions. Any nominations will be gladly heard!

An Events Schedule is being posted for the next 3 months - so please cast your eye over it, and start booking some of the dates into your diaries. Plans include an Old Scottish New Year on Saturday 11th, Burn's Night on Sunday 26th and an Australian Day on Monday 27th. Any ideas for good event nights/days/features will be gladly heard!

That's all for now, we still have a lot of improvements we are planning to introduce in the next few months - all of which should make the Journey's End a better pub for you to drink, eat and socialise at.

Please keep the support up, and keep the feedback and ideas coming!

Mark Genders

TEN YEARS AGO . . .

A splendid festive season was reported from the Journey's End, aided by Shaun Bracey on the piano. The Christmas quiz was won by Guy and Myra Eddy . . . a bottle bank was sited in the JE car Park . . . a site meeting was arranged to discuss the proposed access to the National Trust car park, in view of the potential danger on the corner . . . the Ringmore team was drawn away to Wembury in the first round of the Inter-Parish Quiz

Music
at the
Paddock

Frank & Marina

Monday at 7.30pm

Jan 13th

Feb 17th

Mar 17th



Tel 01548 810205

Closed on Monday & Tuesday

Wed - Sat Noon - 3.00pm

6.30pm - 11.00pm

Food: 12.30pm - 2.30pm & 6.30pm - 9.00pm

Sun Noon - 10.30pm

Food: 12.30pm - 2.30pm



WOMEN IN THE COMMUNITY

The Christmas party this year was a 'first' as regards venue - the 'Oyster Shack' at Stakes Hill being chosen, an excellent choice too. Members numbering over thirty plus husbands and friends enjoyed an excellent dinner in attractively decorated surroundings. Afterwards, various raffles and games rounded off the evening.

Please target the Notice Board for details of the January meeting.

A HAPPY NEW YEAR to all!

Naomi Warne



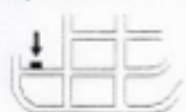
CANDY
FRIDGE/FREEZER
4.6/4 CU FT

ONLY 6 MONTHS OLD

01548 810575

POST OFFICE STORES

Daily Deliveries Bigbury-on-Sea 810274
POST OFFICE - GROCERIES - BREAD - DRY CLEANING
CONFECTIONERY - PHOTOCOPYING - STATIONERY - VIDEOS
NEWSPAPERS - MILK & CREAM - FRUIT & VEGETABLES
CREAM BY POST - FRESH LOCAL MEAT - WINES & SPIRITS



Car Park

Stores open: 9.00am - 5.00pm
Except Tuesday 9.00am - 1.00pm
Sunday 9.00am - Noon
Post Office open 9.00am - 1.00pm
Monday, Tuesday, Thursday, Friday

Mick & Carolyn Hunt

All orders promptly serviced & despatched Friendly & courteous service

NIGEL FROST

BS: (Hurs)

Optometrist

FC Optom

Chene Court, Modbury
next to car park

01548 830944

Open Weekdays and Saturday Morning
Contact Lenses, Spectacles, Accessories
Complete Eye Examination

A M KING & SONS

Registered Builders

Internal & External Decorations

uPVC Windows & Fascias

Extensions/Conversions

New Kitchen
or Bathroom

810570



Rob Batten Car Sales



Quality cars to suit all pockets
My prices can't be matched

Phone for a chat
810680

Nicholas HAIR & BEAUTY

8 Church Street, Modbury
South Devon Tel: Modbury 830152
Ladies' & Men's Hairdressing & Beauty Salon

or at Marine Hotel, Salcombe, South Devon Tel: Salcombe 843370

DAY OF BEAUTY

A relaxing and recharging day pampering at the luxurious Marine Hotel; including sauna, swim, solarium, spa bath, full body massage, full Sothys facial. Light lunch in the hotel lounge or restaurant followed by manicure,

BIGBURY SHOP & POST OFFICE

Daily Deliveries - No order too small - Just give us a ring

Bread + Fruit & Veg + Milk & Dairy Products

Newspapers & Magazines

Best Back Bacon + Ham + Tongue + Cheese

any amount cut

SHOP
Daily 8.00am - 4.00pm
Sunday 9.00am - 1.00pm
01548 810213

Aune Valley Meat
Color Gas & Coal
John & Margaret Inman

POST OFFICE
9.00am - 1.00pm
Monday to Friday
01548 810213

Wedding Bouquets
Funeral Tributes

"Rosemary"

Flowers
for
all occasions

1 Broad Street
Modbury
Tel 01548 830048

THE BAKERY

Fresh Bread
Daily



Fresh Sandwiches,
Hot Snacks, Cakes,
Tea & Coffee

Broad Street, Modbury
Tel: 01548 830216

Residential Care Home
Hotel for the Elderly

Prop: Gina & Gordon Phillips

KORNILOFF

Overlooking Burgh Island

A Family-run Home NVQ trained staff

24 hour Care, Home cooking, Special diets catered for, Stair Lift, Hairdresser, Chiropodist, Bath Hoist if needed Large Single, Double or Twin rooms by choice. Some en-suite

Your Dignity and Privacy is paramount
Transport can be provided by arrangement
Devon County Council registered

Warren Road, Bigbury-on-Sea, Devon TQ7 4AZ
Telephone: 01548 810222

HIRAM BOWDEN



Repairs
Servicing
MOT

Cars collected & returned
Tel: 550129
Evening 01752 896065



Jinny McCabe
Wedding Florist

Bouquets

Church & Marquee
Decoration

Foxhole
Dukes Mill, Bigbury
Kingsbridge, TQ7 4HL
Tel: 01548 810538

The Oyster Shack

Seafood, salads,
sandwiches

Bring your own wine -
we supply the glasses

Closed

Tuesday & Wednesday

Booking advisable

Stakes Hill, Bigbury
Tel: 01548 810123

Winter Opening

January - April 30th

Lunchtime

Monday, Thursday,

Friday

Saturday, Sunday

Evenings

Saturday

Royal British Legion

Bigbury Kingston Ringmore

At the Annual General Meeting the following Officers of the Branch were elected:

President: Mr Brian Stark 810324
Chairman: Mr David Young 810389
V Chairman: Mr Colin Jackson 810292
Secretary: Mrs Robbie McCarthy 810738

There is no meeting in January. The next meeting will be held on Wednesday 5th February at the Dolphin Inn, Kingston and the March meeting will be on 5th March at the Royal Oak, Bigbury.

100 CLUB

£300 John Bowlam
£20 Debbie Gilliam
£5 Colin Jackson

Robbie McCarthy
Hon Secretary

We hope that you enjoyed the Christmas Tree this year.



We would like to thank Dane and Hilary of Holywell Stores for providing the tree again.

Stan & Phill

No doubt everyone will echo the thanks to Dane and Hilary and add a big THANK YOU to Stan and Phill for erecting and decorating the tree.

RINGMORE HISTORICAL SOCIETY

Wednesday 15th January
7.30pm
Parish Room

Ben Hartley - Ermington Artist

Talk by: Bernard Samuels
Formerly Director of Plymouth
Arts Centre

Ben Hartley was a painter who lived for twenty three years in Ermington, from 1960 to 1983, and taught part-time at Plymouth College of Art. He was deeply attached to the countryside and the spirit of country life and his work is full of humour and vivid colour. He died in 1996 leaving all his work, a vast collection of paintings and notebooks, to Bernard Samuels.

Everyone is welcome to come along to enjoy the illustrated talk.
Members £1.50
Non-members £2.00
Refreshments included

RINGMORE PARISH COUNCIL

Meeting: Tuesday 17th December 2002
Present: Five councillors; the Clerk;
Mr Brian Carson, District Councillor
Mr Guy Eddy, Millennium Committee
Mr David Young, Neighbourhood Watch

Resignation

Mr Adrian Muller has resigned after seven and a half years. We thank him for his conscientious and dedicated work during his time on the Council.

Neighbourhood Watch

The would-be thieves are about again. Recently, in the village, one car was damaged and another broken into. The council urges everyone not to leave valuables or anything which might tempt these opportunists, in their car.

Millenium Clock

Everything is going as planned with the exception of one small hitch, i.e. the striking mechanism. There is going to be a meeting with the chairman of the Parochial Church Council to resolve this.

District Council

Mr Carson informed us that anyone who has problems to do with planning can go for a consultation at Quay house in Kingsbridge on alternate Tuesdays between 10.00am and 12.00 noon. The scheme, which has been operating since August, is proving to be successful. Details are in the Gazette.

Abandoned cars

The SHDC is imposing a fine of £155 on owners of such vehicles.

Planning

Approval has been given to form a single dwelling at 1 & 2 Cumberland Cottages.

The Council has no objection to the application for additions to The Nook.

Finance

The Council agreed that the Precept for the twelve months from April 2003 should be £2750. Up to £600 may be needed to cover the local elections in May.

Public Transport

The F7 Fare Care Scheme has started. Membership is free but you will need to complete the application form and supply a passport photograph. The latter can be obtained from the Camera Shop or from Somerfields in Kingsbridge. Mr Carson, 810194, has offered to help anyone who has difficulty in obtaining a photograph.

Please note that the weekly buses will continue to run to Kingsbridge on a Tuesday and to Plymouth on a Friday.

Next Meeting

Tuesday 21st January at 7.00pm in the WI Hall

Theлма Mann

Flete House

Isla St Clair

In concert

Friday 21st February

8.00pm

£10.00 with light refreshments

Reservations: 01752 830308

MEDIC MALAWI

Next month's Coffee Morning at the Korniloff, on Wednesday 5th February, will be in aid of Medic Malawi, a charity which provides food and medicine in the famine-stricken, southern African country.

I visited the country last year and will be at the Korniloff to talk about the problems and how the money is spent.

Your support, including raffle prizes, books, bric à brac and home-made cakes would be greatly appreciated. Please contact me on 810357.

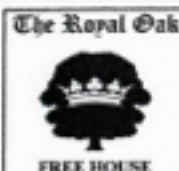
Pat Prior

Pat is a nurse who lives in Challaborough.



A car was broken into outside the Journey's End in December and property was removed. The thief did not escape with the items thanks to the prompt action of Grahame Gilliam. Grahame pursued the thief and caused him to drop the goods by striking him more than once with the grass box from his mower. The thief eventually escaped in a waiting car which proved to have false number plates.

Grahame's bold action is to be commended.



The Royal Oak
Bigbury



Telephone: (01548) 810313

Tina and Martin
wish
EVERYONE
a
HAPPY
NEW YEAR

TABLE TENNIS fare **F7** care

Here's hoping you had a most enjoyable Festive holiday in whichever way you celebrated and that your New Year's resolutions are still holding firm. The Club restarts after the break on Tuesday 7th in the Parish Room at 7.30pm.

If any adults have not yet been down for a game and have thought about trying something different for the New Year, why not come along. You will be made most welcome irrespective of your standard of play. We all have to start sometime; it will also help to lose a few pounds put on over the past couple of weeks.

The John Bracey Annual Table Tennis Tournament will be on us shortly, so now is the time to get in some practice.

Hope to see you on Tuesday evenings.
Happy New Year
Phillip Errett 810547

The long-awaited transport system, which is intended to supplement the existing bus service, is now operating.

A leaflet should be delivered with this Newsletter and it contains all the information needed for anyone who wishes to take part.

You will need to become a member by completing and returning the application form together with a passport photograph.

Take it to either the Kingsbridge Transport Information Centre at Quay House, Kingsbridge or to the Modbury Tourist Information Centre. Please bear in mind that the latter is open only on a Saturday morning from 11.00am to midday, until Easter.

Enigma

December
SOLUTION

December's puzzle defeated almost everyone. Competitors produced some wonderful words:-

Gemini - **ENTROPY** - from which some competitors seem to be suffering!

New Dawn - so close with **ALBUMENOID** - not quite the right spelling.

Opals - **CENTROID** - right to the heart of the matter but not long enough.

Champion Matchman - proved his/her overall superiority by finding **EMBLAZONRY** - the art of . . . if you are still interested, it is in the dictionary.

Thank you to everyone who took part, even those with entropy! Make it your New Year's resolution to resume the quest for glory and to persevere. If the Champion would indicate which hedgerow the prize should be tossed in for collection, it shall be done.

| | | | | |
|---|---|---|---|---|
| F | L | A | X | J |
| B | U | Z | V | D |
| W | M | T | O | I |
| G | E | N | R | P |
| H | C | S | K | Y |

January

Let us start the new year with a letter ladder or whatever you wish to call it.

Change the first word into the last word by altering one letter at a time, to form a different, valid word on each rung until you reach the final word.

SEEDY

GRASS

Competitors old and new will be welcomed alike. For those who have not tried before, think of a pseudonym if you wish to remain anonymous and submit your solution. Good luck for 2003!