

Mobile Library

Friday:- 11th & 25th

Ringmore Church
12.05 - 12.30

Challaborough
12.35 - 12.45

St Ann's Chapel
3.15 - 3.30

Kingston Fire Stn
3.45 - 4.30

October 2002

Issue Number 206

DEADLINE

→ Saturday 26th ←

Editor: Geof Dykes 810123



Last
Month $\frac{1}{2}$ "

Average - last 10 years - 23"
High - 1995 - 39"
Low - 2000/01 - 9"

Rainfall - Fiona Batten

RINGMORE

PARISH NEWSLETTER

'The leaves of brown came tumbling down ... generously donated their prize money to the remember... that September... in the rain'; so sang the Newsletter. You know what to do on Thursday night incomparable Sinatra. We shall remember this

September, not for the rain but for the beautiful end to So we come to Friday. There are many options. If Summer. Warm, hazy days giving way to the first nip you do not like the answer to Q7 in the Town Quiz, of Autumn evenings; bonfire smoke curling into an make your own choice!

azure sky, imbuing the washing with that unmistakable 'je ne sais quoi.' That should banish any romantic thoughts and banish them we must as there is much to do as the evenings darken.

Short Mat Bowls recommences on 7th October. Anyone who has not tried the game or has not played for some time or is a regular international would be welcome. Just turn up. That's Mondays sorted.

Read about the Ringmore Alcoholic Haze and how to fight your way through it. That does Tuesdays.

Keep Fit (with Dance and Aerobics) moves to Kingston, starting on 9th October from 8.30pm to 9.30pm. Call Linda Watson on 810725. That's Wednesdays filled.

*Quiz Night at the Journey's End has slipped sweetly into rhythm. Gillian's 4*4 team won on 26th and very*

Charity begins in Ringmore or so it seems. The British Legion fund-raising begins this month; Harvest Supper is upon us and there is a Charity Fashion Show so you should be able to find someone to take your money. You did last month, the Bike-Ride & Stride was a great success.

The Town Quiz. The editorial staff spent an hour or more marking the papers, which were then down graded to match last year's standard! 'Well Done' to all who took part. Commendable effort has been invested in successfully finding unarguable (oh no they're not!) alternatives. Some challenged the official answers but most failed! Great fun!

Finally, it is too early to mention the word for the 25th December. Jane Guy tried to slip it in but she was cunningly foiled. Read on . . .

The Journey's End

As many of you know, the Journey's End is on the market. Grahame says there is lots of interest. The pub is an important part of social life in the village and it is unfortunate, in the least, that circumstances have denied Grahame the opportunity of fulfilling the ambition he had when he came to Ringmore in June 1999. The consequences of mounting pressure are known and are not for discussion here or in any public place for that matter. Change is rarely made without disruption and it is to be hoped that those adversely affected by the situation are given strength and support where it is welcomed.

*Please send items for inclusion in the Newsletter to:
The Editor
Ringmore Parish Newsletter,
Ringmore Vean, Ringmore, TQ7 4HL
or put them through the letter box in the garage door
email: news@ringmore.com*

Diary for the Month

MONDAYS: Short Mat Bowls 7.30pm Parish Room
TUESDAYS: Table Tennis Parish Room 7.30pm
THURSDAYS: Quiz Night 9.00pm Journey's End

2nd Royal British Legion 7.30pm Journeys End
3rd WI Group Meeting 7.30pm WI Hall
6th Harvest Thanksgiving Service 11.00am All Hallows
7th Short Mat Bowls recommences 7.30pm Parish Room
9th Affordable Housing Meeting Memorial Hall 7.30pm
St Ann's Chapel
10th WI Meeting - talk at 8.00pm
Travels in India - Frank & Drina Williams
11th Harvest Supper 7.30pm Parish Room
22nd Parish Council Meeting 7.00pm WI Hall
24th Charity Fashion Show Ivbridge College 7.30pm
26th Start of RBL House-to-House collection
November
1st Royal British Legion Auction 8.30pm Journeys End
6th Royal British Legion meeting 7.30pm Royal Oak
Royal British Legion Raffle Draw 9.00pm Royal Oak

POST OFFICE STORES

Daily Deliveries Bigbury-on-Sea 810274
POST OFFICE - GROCERIES - BREAD - DRY CLEANING
CONFECTIONERY - PHOTOCOPYING - STATIONERY - VIDEOS
NEWSPAPERS - MILK & CREAM - FRUIT & VEGETABLES
CREAM BY POST - FRESH LOCAL MEAT - WINES & SPIRITS



Car Park

Stores open: 9.00am - 5.00pm
Except: Tuesday 9.00am - 1.00pm
Sunday 9.00am - Noon
Post Office open: 9.00am - 1.00pm
Monday, Tuesday, Thursday, Friday

Mick & Carolyn Hunt

All orders promptly serviced & despatched Friendly & courteous service

NIGEL FROST

BSr(Htss)

Optometrist

FC Optom

Chene Court, Modbury
next to car park

01548 830944

Open Weekdays and Saturday Morning
Contact Lenses, Spectacles, Accessories
Complete Eye Examination

A M KING & SONS

Registered Builders

Internal & External Decorations

uPVC Windows & Fascias

Extensions/Conversions

New Kitchen
or Bathroom

810570



Residential
Care Home

Prop: Gina & Gordon Phillips

KORNILOFF

Overlooking Burgh Island

A Family-run Home NVQ trained staff

24 hour Care, Home cooking, Special diets catered for,
Stair Lift, Hairdresser, Chiropodist, Bath Hoist if needed
Large Single, Double or Twin rooms by choice. Some en-suite

Your Dignity and Privacy is paramount
Transport can be provided by arrangement
Devon County Council registered

Warren Road, Bigbury-on-Sea, Devon TQ7 4AZ
Telephone: 01548 810222

Coach House Photographic

Events and items Photographed
Valuables catalogued in pictures
All recorded on to self-running CD's
and/or printed on high quality
photographic paper

Contact - Mike Wynne-Powell
E-mail mwp@softhome.net
Telephone 01548 810407
The Coach House Ringmore
Kingsbridge TQ7 4HJ

SHEPPARDS

Chartered Accountants



Call Ian or Yvonne Sheppard

on (01548) 810341 or

(01752) 220333

fax (01752) 221742

Your Local Accountants

1 Addison Road, North Hill
Free ~~on-site~~ parking
Full Accountancy & Taxation Service
www.sheppardsaccountants.co.uk

AVAIL-
SPACE
BLE

Nicholas HAIR & BEAUTY

8 Church Street, Modbury
South Devon Tel: Modbury 830152
Ladies' & Men's Hairdressing & Beauty Salon

or at Marine Hotel, Salcombe, South Devon Tel: Salcombe 843370

DAY OF BEAUTY

A relaxing and recharging day pampering at the luxurious Marine Hotel;
including sauna, swim, solarium, spa bath, full body massage, full Sothys
facial. Light lunch in the hotel lounge or restaurant followed by: manicure,

Rob Batten Car Sales

Quality cars to suit all pockets
My prices can't be matched



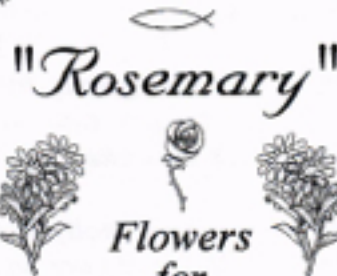
Phone for a chat
810680



Wedding Bouquets



Funeral Tributes



Flowers
for
all occasions

1 Broad Street
Modbury
Tel 01548 830048

THE BAKERY MODBURY

Bakers And Grocers
Farmhouse Bread
Hovis - Wholemeal



Take-away Snacks
Sandwiches

01548 830216

Don't let the fear of flying STOP you having a holiday -
the whole of Europe is just across the English Channel!

HOLIDAYS for all, by ROAD, RAIL and SEA
in the UK, Ireland and Europe

and
The rest of the world BY AIR

FARE DEALS TRAVEL SERVICES

01548 810869

www.travel-mouse-travel.co.uk
arr@fare@travel.co.uk

Local Agent to A&A



News From All Hallow's

Your Parish Church

October 2002

RINGMORE

OCTOBER

SERVICES

6th 11a.m. Harvest
Festival

13th 9 a.m. Commu'n

20th 6p.m. BCP

Evening

Prayer

27th 9a.m. BCP

Communion

30th 6p.m. All Saints

Festival

BIGBURY: 1st Sunday:
6p.m. Spoken Evening
Prayer. 2nd Sunday: 11a.m.
Harvest Festival. 3rd Sun-
day: 9a.m. BCP Commu-
nion. 4th Sunday: 11a.m.
Family Communion

KINGSTON 1st Sunday:
9a.m. Communion. 2nd
Sunday: BCP Evening
Prayer. 3rd Sunday: 11a.m.
Family Service (with Sunday
School). 4th Sunday: 6p.m.
Evening Prayer

HARVEST SUPPER

Friday 11th 7.30 p.m.
in the Parish Room.
£5 (£1 for children)
Good Food & Enter-
tainment

You'll Never Get to Heaven In An Old Ford Car (but you might by bike)

Did you ever sing that song "I ain't gonna grieve"? We once did, with verses made up about teachers and each other. On a September morning Alan and I cycled in aid of Devon Historic Churches. After an early start we were heading for Loddiswell; final destination Bigbury, after eight churches by 11.00a.m. to beat the tide. We were almost re-routed by a BMW who left a few inches gap be-

tween his metal body work and our flesh.

The incident confirmed my view that it would be good for all drivers to ride a cycle, and cyclists to be in a car for one day a year. Cyclists can be a menace to car body work, but cars can cause fatal damage to cyclists.

Eventually we cross the tidal road without getting wet but only just ; an ex-



There are lots of hills in South Hams!

hausted Resident Minister far behind his friend. Mutual apologies are offered for going ahead and for lagging behind. Alan explains that he needed to get through ahead of the water, but a Resident Minister could surely ride on it?

IF YOU DON'T FORGIVE WHAT HAPPENS ?

Bitterness is just unfulfilled revenge. So what do I do about the BMW driver, and other folk who have been less than friendly in their approach? Emotionally I react with bitterness, but that just keeps the pain

alive, controls my moods and causes me to lose friends. So burn the scorecards, make a decision. "BMW driver you are forgiven, totally and utterly, but maybe leave a small safety margin around the next cyclist!".

There I've done it, only a little thing. Jesus also did it, but he carried the sins of the whole world on the cross to free us all. It takes a miracle to forgive, and He provided that miracle.

M and J P Builders

All types of building work
undertaken

New Buildings

Renovations

20 years experience
in Building Trade

For FREE Estimates and Advice
please phone
810633



SALES SERVICE SPARES

For all your Garden Equipment
Give us a call

**QUALITY MACHINERY
AT THE RIGHT PRICE**

Avon Bridge Aveton Gifford

Nigel Walton

Computers built to exacting requirements
Almost trade prices
Upgrades, Processors, Hard Disks, and Software solutions
No job too small

Lousown
Folly Hill
Bigbury-on-Sea



Tel
01548 810767

TILLY DOWNING B.Sc. Pod., M.Ch. S.

STATE REGISTERED CHIROPODIST



*Surgery or Home Visit
Three Years Training
Safe & Thorough*

The Laurels, Fore Street, Aveton Gifford

Tel: 01548 550072

Opposite the Memorial Hall Car Park



PHOTO EXPRESS - Modbury

Hours of opening

Monday 9.00am - 1.00pm
to &
Friday 2.30pm - 6.00pm
Saturday 9.00am - 1.00pm
2.30pm - 5.00pm

MODBURY PHARMACY

Tel: 830215

BIGBURY SHOP & POST OFFICE

Daily Deliveries - No order too small - Just give us a ring
Bread + Fruit + Veg + Milk + Dairy Products Newspapers & Magazines
Best Back Bacon + Ham + Tongue + Cheese
Aune Valley Meat Calor Gas & Coal

Fish & Chips, etc, Friday & Saturday

SHOP
Daily 7.30am - 8.00pm
Sunday 8.30am - 8.00pm
01548 810213

5.00pm - 9.30pm
New Video Club
John & Jackie Ranson

POST OFFICE
9.00am - 1.00pm
Monday to Friday
01548 810213

Julie
Fully Qualified
Mobile Hair-stylist



Ladies & Gents
Competitive Prices
Ansaphone available

Bigbury-on-Sea
810634

PRE-TEXT



Graphics / Artwork/Logo Design
Posters/Leaflets/Advertisements
Overhead Foils - Design/Preparation
All aspects of Desk Top Publishing

GEOF DYKES
RINGMORE VEAN, RINGMORE, TQ7 4HL
TEL 810123

HIRAM BOWDEN



Repairs
Servicing
MOT

Cars collected & returned
Tel: 550129
Evening 01752 896065



Jinny McCabe
Wedding Florist

Bouquets
Church & Marquee
Decoration

Windwood Farm
Ringmore
Kingsbridge, TQ7 4HJ
Tel: 01548 810538

Kevin Light

PLUMBING & HEATING
CORGI & A.C.O.P. Reg.

Wychbury
Ringmore Drive
Bigbury on Sea

Tel 01548 810726
Mobile 07721 955506

FOR 'REAL' CHEESE & WINE

MACKGILLS

+ Handcut Farmhouse English & Continental Cheese

+ Home-cooked Ham & Salamis

+ Home-cooked Pies & Cakes etc.

+ Wine, Best Sherry & Cider...
and much more



DELICATESSEN

Telephone Enquiries Welcome

4 Church Street, Modbury, Devon PL21 0QW
Telephone: Modbury (01548) 830860

Journey's End Journal

What a marvellous Indian summer we have been having, perfect walking and late holiday break weather, long may it continue, it has put June's weather to shame. In some ways though I am quite locking forward to lighting our fire in the bar again. It creates a cosy atmosphere and has a presence all of it's own.

Whilst I have taken the first steps in change at the JE we still have a very interesting line-up of events and activities for October, and will continue to do so.

The music programme for October continues with our unplugged folk bands with Hogwash appearing on Friday 4th, and Stagger'd Pump on Friday 18th, both

first class folk bands. On Friday 25th we have a change of pace with the local rock band TQ7 who are definitely confirmed for this date.

The Thursday night Quiz is now under way, with good opening quizzes from Geoff and Phil, we now need more volunteers for quiz masters please.

Don't miss our Curry Night, scheduled for Saturday 12th for a good selection of curries in our usual help yourself format.

Finally on 1st November the JE will of course be hosting the British Legion Auction.

Grahame



Tel 01548 810205

Closed on Monday

Tues - Sat Noon - 3.00pm

6.30pm - 11.00pm

Friday: Early Doors Club 6.00pm

Food: 12.30pm - 2.30pm & 6.30pm - 9.00pm

Sun Noon - 10.30pm

Food: 12.30pm - 2.30pm



WOMEN IN THE COMMUNITY

The title of our September talk by Jim Henry was Shopping - a "man's perspective" - and it was certainly that! Some of us did not know whether to laugh uproariously or be offended! He was funny ha-ha and a bit malicious perhaps but certainly entertaining.

After this it was down to business for the forthcoming Group Meeting in October. We hope to welcome a good number of guests from other WI branches, which gives us a chance to exchange views and renew old acquaintances!

The normal monthly meeting will be on 10th October when Frank & Drina Williams will talk on their 'Travels in India'.

Guests welcome.

Naomi Warne

THE MILLENNIUM CONTINUED Church Clock

We have now received an estimate for the provision of a clock for the tower.

Clock with required controls

£3575 + VAT

Striking mechanism with controls

£1450 + VAT

We are applying to the Diocese of Exeter for a Faculty in order to go ahead and hope for a decision in mid-November.

Meantime we are seeking an extension of time from the Trust Fund who have offered to help us. Their offer is due to run out in late November and we have asked for another 6 months.

Hopefully by December the situation should become clearer

Guy Eddy

RAFT RACING

Every year there is a Raft Race from Buckfastleigh to Totnes. This year it will be on Sunday 6th October.

The Modbury Badminton Club has entered a raft, Drambuie II. Really, you say, what has that to do with Ringmore? Well, on some club nights there are as many as 7 players from the village, a number which occasionally comprises the whole attendance. We have a crew member in our midst, none other than Bob Wood. He will be up not long after dawn to do his stuff and he would be grateful to anyone who would sponsor him in this charity event.

Previous craft have met with very different results. Drambuie I rode well on a high river but Soggy Bottom was badly damaged by rocks encountered in a year of low water. This year the river could be low again and the crew could spend a lot of time manhandling the raft over shallow areas. Support would be a great encouragement as they struggle through the water.

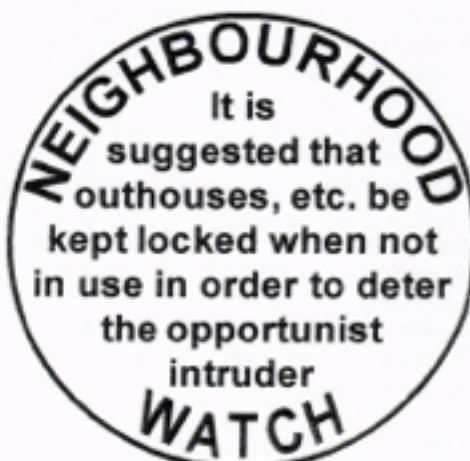
Every little helps, so why not give Bob a call and support him to the tune of a pint or two? 810265

TEN YEARS AGO . . .

The British Legion was, naturally, in the thick of fund-raising and at the helm was none other than Guy Eddy - the WI write-up was written by Ardene Bennett, no longer the correspondent but still a member - George Grimshaw, current President of the Historical Society, wrote then as Chairman.

The Parish Council discussed the establishment of the Emergency Planning Committee.

A Bottle Bank was sited in the Journey's End car park



The
MUSTARD TREE
Cancer Support Centre
FASHION SHOW
By
Diana Boutique
Thursday 24th October
7.30pm
The Dining Hall
Ivybridge
Community College
Tickets from Gill Tomlin
£5 (including a glass of wine)

Royal British Legion

Bigbury Kingston Ringmore

The talk after last month's meeting, delivered beautifully by David Young, was taken from an article submitted to the Marine Maritime Academy in Canada. The author and recipient are unknown so credit cannot be given.

'It is with regret and haste that I write this letter to you, regret that such a small misunderstanding would lead to the following circumstances, and haste in order that you will get this report before you form your own preconceived opinions from reports in the world press, for I am sure that they will tend to overdramatise the affair.

We had just picked up the pilot, and the apprentice had returned from changing the "G" flag for the "H" and, it being his first trip, was having difficulty in rolling the "G" flag up. I therefore proceeded to show him how. Coming to the last part, I told him to "let-go". The lad, although willing, is not too bright, necessitating my having to repeat the order in a sharper tone.

At this moment the Chief Officer appeared from the chart room, and thinking that it was the anchors that were being referred to, repeated the order to the Third Officer on the forecabin. The port anchor was promptly let go. The effect of letting the anchor drop from the "pipe" while the vessel was proceeding at full harbour speed proved too much for the windlass brake, and the entire length of the port cable was pulled out by the roots. I fear that the damage to the chain locker may be extensive. The braking effect of the port anchor naturally caused the vessel to sheer in that direction, right towards the swing bridge that spans a tributary to the river up which we were proceeding.

The swing bridge operator showed great presence of mind by opening the bridge for my vessel. Unfortunately, he did not think to stop vehicular traffic, the result being that the bridge partly opened and deposited a Volkswagen, two cyclists and a cattle truck on the foredeck. My ship's company are at present rounding up the contents of the latter, which from the noise I would say are pigs. In his efforts to stop the progress of the vessel, the Third Officer dropped the starboard anchor, too late to be of practical use, for it fell on the swingbridge operator's control cabin. After the port anchor was let go and the vessel started to sheer, I gave a double ring Full Astern on the Engine Room Telegraph and personally rang the Engine Room to order maximum astern revolutions. I was informed the sea temperature was 53 degrees and asked if there was a film tonight, my reply would not add constructively to this report.

Up to now I have confined my report to the activities at the forward end of the vessel.

Down aft they were having their own problems. At the moment the port anchor was let go, the Second Officer was supervising the making fast of the after tug and was lowering the ship's towing spring down to the tug.

The sudden braking effect on the port anchor caused the tug to run in under the stern of my vessel, just at the moment when the propeller was answering my double ring 'Full Astern'. The prompt action of the Second Officer in securing the inboard end of the towing spring delayed the sinking of the tug by some minutes, thereby allowing the safe abandoning of that vessel.

It is strange but at the very same moment of letting go the port anchor there was a power cut ashore. The fact that we were passing over a 'cable area' at the time might suggest we may have touched something on the river bed. It is perhaps lucky that the high-tension cables brought down by the foremast were not live, possibly being replaced by the underwater cables, but owing to the shore blackout it is impossible to say where the pylon fell.

It never fails to amaze me, the actions and behaviour of foreigners during moments of minor crisis. The pilot, for instance, is at this moment huddled in the corner of my day cabin, alternately crooning to himself and crying after having consumed a bottle of gin in a time that is worthy of inclusion in the Guinness Book of Records. The tug captain, on the other hand, reacted violently and had to be forcibly restrained by the Steward, who has him handcuffed in the ship's hospital, where he is telling me to do impossible things with my ship and my person.

I enclose the names and addresses of the drivers and the insurance companies of the vehicles on my foredeck which the Third Officer collected after his somewhat hurried evacuation of the forecabin. These particulars will enable you to claim for the damage they did to the foredeck and number 1 hold.

It is sad to think that had the apprentice realised there is no need to fly pilot flags after dark, none of this would have happened.'

The next meeting will be on Wednesday 2nd October at the Journey's End Inn, Ringmore at 7.30pm and the November meeting will be on Wednesday 6th at the Royal Oak, Bigbury.

Robbie McCarthy
Hon Sec

100 CLUB

August
£20 Pete Lewis
£5 Geof Dykes

September
Paul Newton
John Freeman

POPPY APPEAL

As this year's POPPY APPEAL approaches the dates for known activities are as follows:

26th October to 9th November. House to House collections may take place.

Friday 1st November. RBL Auction Night at Journey's End Inn, Ringmore. Start - at 8:30pm. Items for sale and pledges are wanted please. Whisky raffle at end of evening.

Wednesday 6th November. RBL Draw at Royal Oak Inn, Bigbury. Start at 9.00pm.

Saturday 9th November. RBL Coffee Morning at Reading Room Kingston at 10:30am. Cake Stall, Bring and Buy Stall and 3 Raffles.

Sunday 10th November. Remembrance Service at Bigbury Church starting at 10:50am.

Guy Eddy

Poppy Appeal Organiser

Would anyone wishing to donate a pledge or an article for the auction please contact Alan McCarthy on 810738.



Message In A Bottle

Greetings from the Birthday Isle! It is one year since Tory and Deborah took over the reins and they would like to thank everyone who has supported them in the good times and the trying times. What a year it has been - with innovations and old traditions revived (sorry there was no message last month - Tom Crocker and Any Which Way Round the Island were great successes, thanks to those who joined in).

As you know the Tractor has suffered its longest lay-up. One thing after another led to major works but we hope to hear it trundling across the sands soon - can I hear it now?

We are now serving Evening Meals every Thursday, Friday and Saturday. The menu changes weekly so check the board for our culinary delights. It will be National Fish week, 4th - 11th this month so come and enjoy our Sushi and Japanese Beer Evening.

At Halloween the Hotel will hold a Murder Mystery Evening, details on 810514. The Pilchard will be festooned with pumpkins, some will be made into soup and pies to be enjoyed with mulled wine.

We shall have a Bonfire around 5th November; there will be free sparklers for children and free sausages and mulled wine in the Pilchard. We look forward to seeing you during the month.

Steve

BARDENS GARAGE

BIGBURY

Servicing ~ MOT Welding

Mechanical Repairs

Accident Repairs

Bodywork

Breakdown

Accident Recovery Available

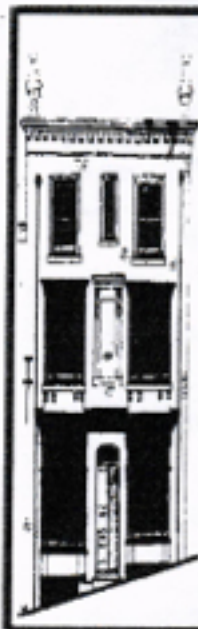
01548

07887

810627

610247

Proprietor: E Nicklen



DEVONSHIRE FINE ART

Antique Watercolours, Oil Paintings,
Drawings, Maps and Prints.

Local Watercolours & Prints.

Quality Picture Framing Service.

9 Church Street, Modbury,

Devon PL21 0QW

Telephone/Fax: (01548) 890872

Antiques
&
Collectibles

Pay us a visit
for that
unusual gift



COLLECTORS CHOICE

Variety of antiques, valve radios,
fountain pens, clocks.
Extensive range of Art Deco items.
Old and interesting items purchased

27 Church St., Modbury
Tel 01548 831111

OPPOSITE COUNTRY FINE FURNITURE

2002 TOWN QUIZ 2002

- 1 Is this the beginnings of a plague?
- 2 Put the lady's gammon on the compost
- 3 My bouche
- 4 One is here, two there: three near and . . . ?
- 5 Thick chips
- 6 Is everything here converted to carbon?
- 7 The traditional place to be on a Friday night
- 8 Prescribed for bedtime
- 9 $N_2 + O_2 + A + Ne + He + CH + Kr + H_2 + N_2O + Xe + H_2O + CO_2 + O_3 + SO_2 + NO_2 + NH_3 + CO$
- 10 You could hear this in the middle of the Pacific?
- 11 A tetchy warning
- 12 Worth more than Ratner's jewellery?
- 13 What he said his dad was, compared with mine
- 14 Raise your glass to 'er Majesty
- 15 A prisoner in Cornwall
- 16 Tart or crumpet?
- 17 How one judges quality nylons
- 18 A water bailiff?
- 19 Henry's first motorcar
- 20 Part of Norfolk, it is said in Liverpool
- 21 What a careless driver does to cars
- 22 The two Ronnies would not get any Os here
- 23 Sounds as though the cathedral dignitary is a follower of pop
- 24 One of a pair, in a manner of speaking
- 25 Barely cannonized
- 26 What you could call someone who eats ova
- 27 Political Party captures seat?
- 28 What to do if the door is not answered
- 29 Extremely fearful crossing in Devon
- 30 936 years ago this cry would have meant nothing at Stamford Bridge
- 31 Sounds like a super sandy shore
- 32 Something which the Tin Man had.
- 33 Could this be where Spanish geneva is made?
- 34 Sounds like a point blank refusal to look after something
- 35 Where the police are disdainful.
- 36 E gave 'er a nice finish
- 37 Standard place for a ship to call
- 38 Of what counterfeiters are accused
- 39 Where Noah might find his next boat
- 40 Outer garment worn by the baby Jesus?
- 41 A sudden, inadvertent movement by Grandma?
- 42 Aggregate 35,840 ounces
- 43 Sounds as though the feet are right under the table
- 44 How the puzzle solver finds the solubon
- 45 A famous motor cycle in June
- 46 Mark the whole town
- 47 Diligently and cautiously in Wales
- 48 What old soldiers do proudly with their medals
- 49 Sounds as if the heating is kept on in prison
- 50 A template for a fungus?

Redditch
Rotherham
Monmouth
Forfar
Dumfries
Chard
Bath
Reading
Ayr

Alloa
Watchet
Sandwich
Biggar
Towcester
Bodinnick
Bakewell
Sheerness
Fishguard
Thetford
Diss
Wrexham
Oban
Aberdeen

Bristol
St Just
Exeter
Gainsborough
Ringmore
Horrabridge
Winchelsea

Wisbech
Teignmouth
Elgin
Stornoway

Leith
Gloucester
Stockport
Fakenham
Newark
Swadlincote
Nantwich
Totton
Welwyn

Devizes
Midsomer Norton
Scarborough
Caerphilly
Wareham
Warminster
Mold

The sleepless nights, days of anguish, desperate answer-swapping - it is all over. Rumour has it that it has been greatly enjoyed and some fun had raising funds for the Newsletter. Thank you all for taking part and special 'thanks' to those who paid twice!

The Editor and the Proofreader have enjoyed the ingenuity, the desperation and the genuine alternatives. This year's feature has been the increased number of entries from pets, all of which have done extremely well.

After much consideration, the marking has been completed but there is a number of alternative answers worthy of a mention.

- Q1 Spott was accepted but not Itchen - a river not a place,
Q6 Burntisland is an acceptable alternative.
Q8 Slepe, even Bourneville was prescribed for bedtime - what quiet lives you lead.
Q12 Everyone seems to have forgotten Gerald Ratner's comment that an M & S Sandwich was better value for money.
Q15 Pendennis - good but not good enough. Pendeen was popular but it sounds like 'penned in' uttered by Spike Milligan
Q17 One certainly can judge the quality of nylons if one Feltham!
Q30 Of course Chelsea is associated with (the battle of) Stamford Bridge but the answer needs the exhortation.
Q31 Cawsands does not guarantee the quality.
Q34 Notton is a general not a specific refusal. Arbuthnott shows a genteel consideration.
Q42 Addington cannot be denied.
Q48 Old soldiers do March with their medals but only if they Wareham.
Second favourite suggestion: Q11 it is not a warning but you would be wary of someone who is Sorley Cross.
Favourite: 'E gave 'er a nice finish. Wait for it, wait for it. Emery Down! That would make you Sorley Cross!

Now to the results. Most scored over 30 (it was the taking part which counted), only 5 points separating the top nine gazeteers!
34 Alan & Robbie McCarthy, James & Jane Stevenson
35 Miss Gertie (a Collinson pseudonym); Chocy McCarthy (so pleased to have beaten the humans); Megan 'the Cat Parkin (last year's winner)
36 Moss 'the Dog' Parkin (delighted to have avenged last year's humiliation at the paws of the cat)
37 L'Oie et Legans (a Norwich Collinson pseudonym)
38 Oscar Errett (beside himself at having beaten the cat across the road; Phill & Sally Erret, with some different right answers. Oscar is the winner by virtue of a slightly neater answer sheet!

Wholehearted congratulations to the Errett household!

Let the inspired begin!



The Royal Oak Bigbury

Telephone: (01548) 810313



Enjoy good homemade food in our cosy bar area or sit in the Lounge or Restaurant areas and choose from either the bar menu or our a la carte specials board.

We provide only the best quality food - all freshly cooked on the premises and at reasonable prices.

Open for meals 7 days a week, lunchtimes and evenings. Choice of 3 real ales, all served direct from the cask. Full range of keg lagers and bitters. Refurbished en-suite accommodation.

Large car park and garden.

BOOKINGS ARE NOW BEING TAKEN FOR OUR CHRISTMAS DAY LUNCH EXTRAORDINAIRE & NEW YEAR'S EVE GALA DINNER

DIARY FOR OCTOBER

Mon 30th Sep Euchre Drive starts again - every Mon 8pm

Thu 3rd Oct 'Folk at the Oak' - Folk singing with 'THE WHALERS' & Co from Malborough. Please note that 'Folk at the Oak' has now changed to the 1st Thurs of the month.

Sat 12th Oct Darts Club Party Night

Sun 13th Oct Church Harvest Buffet Lunch - Tickets £6

Thu 31st Oct Halloween Night - The Oak will be decorated - will you be?

Tue 5th Nov Bonfire Night & Fireworks - Enjoy a glass of mulled wine and feast off the Youth Club BBQ, whilst watching this year's display

This year's New Year's Eve theme will be Disney Characters - Get your fancy dress costumes ready



September SOLUTION

There is no man living who isn't capable of doing more than he thinks he can do. Henry Ford

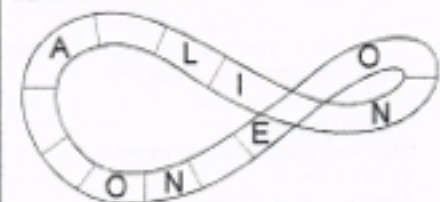
That might be true for our successful entrant this month but they all did enough - Champion Matchman, Real Sleuth, New Dawn and The Opals.

Last month Taurus submitted an answer worth 2 points, which hid among the emails - sorry!

October



Fill in the spaces to find a 14-letter word. All given letters are in the correct order and position within the word; the overlapping letter is used twice. The word might read clockwise or anti-clockwise. To make it twice as difficult, have two words!



BIKE-RIDE-STRIDE



A NEW

occasional

COMPETITION

Apologies for quality which is lost in the enlarging



Before

&

After



Thank you to everyone who entered the 'New Competition'. It is rare when no-one spots the right answer but that is how it was in this case. It was probably poor reproduction which made you think the telephone had been removed; there is a line on the File copy picture which suggests its presence. The real difference, as you can see, was the blocking out of the access hole at the rear of the waste bin. Too difficult? Perhaps. However, to get things moving and in recognition that some of you 'had a go' inspite of the difficulties, a prize will be awarded to all entrants. 'Not fair!' you cry; 'Don't care', say I, you should have entered!

Mike & Jacqueline Patterson, Phill & Sally Errett, Real Sleuth and The Mayfielders will receive their bounty forthwith. Real Sleuth will have to devise (town quiz answer No 44) a method of retaining anonymity (an intermediary will do) or break cover.

To encourage those who have yet to enter, be assured that the prize is worthwhile; it will be a great help in entering any future competition in the Newsletter or elsewhere. In this context it is a universal aid. There, I cannot be more vague!

Editor

RINGMORE PARISH COUNCIL

Meeting: Tuesday 17th September 2002
Present: Four councillors; the Clerk;
Mr Brian Carson, District Councillor
Mr Guy Eddy, Millennium Committee

Recycling Banks

Two recycling banks, one for newspapers and magazines and the other for bottles, are now in situ at Challaborough.

Millennium Clock

Mr Guy Eddy brought the council up to date on the progress of the clock. He has written requesting an extension date for one of the grants he has been offered. This is in order to be able to meet the requirements when applying for a Church Faculty. The Diocesan meeting will be in November.

Planning

Listed building consent has been given for the proposed alterations at Barnford. Consent has been given for the demolition of the existing chalet at Avglen Fell and the construction of a new dwelling.

Finance

Grass Cutting £30

District Council

Mr Carson informed us of various activities, principally concerning the erection of mobile phone masts. These cannot be banned on health grounds provided that radiation emissions are within government guidelines. They can be banned on amenity grounds

Next Meeting

Tuesday, 22nd October in the WI Hall at 7.30pm

Thelma Mann

TABLE TENNIS

The Table Tennis Club has been in full swing since the middle of September. It is good to see so many attending now that the evenings are starting to draw in rather rapidly.

New faces, players of any standard, will be made most welcome from 7.30pm onwards on a Tuesday evening in the Parish Room.

There were a few people I met during the various summer functions who stated their intention to come along once we started up again; we have yet to see them. Perhaps they are still fighting through the Ringmore Alcoholic Haze.

My biggest problem on a Tuesday evening is trying to put the equipment away: I am sure some would play all night given the chance.

Anyway, everyone is welcome, it is not too serious but it is great fun. Come along.

Phillip Errett
810547

All Hallow's ***** Fair

As I write, we are still enjoying a fabulous Indian Summer and yet it is only a few weeks until the Fair on 23rd November.

I shall be running the Stocking Fillers and Decorations Stall again, so please will all you 'crafty' people out there think about what you are going to create to make this year's Fair better than ever.

Jane Guy
810381

BIKE-RIDE-STRIDE

MANY THANKS

A big thank you to all of you who took part in the event on Saturday 14th September.

The sun shone brightly to make it a very pleasant day, John Elliott and Alan McCarthy set off at the unearthly hour of 7.30am managing to visit 8 churches in the area. They travelled some 30 miles and returned back at Ringmore at 11.15am. They just missed the group of walkers along with Jane and her friend on horse-back en route to Kingston Church. They did manage, however, to join up with the group later during a refreshment stop at the Dolphin. Good timing eh!!

The afternoon saw the group leave All Hallows at 3.00pm on the 'long hot trek' to Bigbury Church, again necessitating a refreshment break - this time at the Royal Oak. The group arrived back at All Hallows at 5.15pm.

Once again many thanks to everyone who participated, made a donation, served refreshments etc. Thanks also to Madeline who made her toilet available during the event. Oh, I almost forgot, the day raised the grand sum of £363.50 - well done to everybody.

Half the monies raised will be retained by Devon Historic Churches Trust which last year gave over £50,000 to churches and chapels of all denominations throughout Devon. The other half will be returned to All Hallows Fabric Fund for the repair and upkeep of our lovely church.

Phillip Errett

All Hallow's Church Ringmore



HARVEST THANKSGIVING

Special Festival Service in Church

Sunday 6th October at 11am

HARVEST SUPPER

Set-down meal with wine in the Parish Room

Friday 11th October

at 7.30pm

Tickets £5 (Children £1)

from

Yvonne Sheppard

810341

Jackie Tagent 810520

Drina Williams 810405

EVERYONE WELCOME

Affordable Housing

Across the country, villages are losing young people because of increasing demand for rural properties. Other factors such as jobs and public transport, combined with housing prices, are part of this vexing equation.

One element, affordable housing, will be addressed at a meeting in the Memorial Hall at St Ann's Chapel. The meeting has been called by the Bigbury Parish Council and it will provide the opportunity to understand the processes involved.

Affordable housing is promoted by the Rural Housing Trust which works on a national basis. Its aim is that people on modest incomes should be able to afford to rent (even if they need to claim benefit) or share the cost of ownership.

The meeting which will take place at 7.30pm on Wednesday 9th October, will be addressed by a Field Worker of the Rural Housing Trust. Everyone will be welcome.

Music
at the
Paddock

frank



Drina

Monday at 7.30pm

2002 2003

Oct 14th Jan 13th

Nov 11th Feb 17th

Dec 9th Mar 17th

HOLYWELL STORES



&
**St. ANN'S CHAPEL
POST OFFICE**

Telephone : 01548 810308

POST OFFICE COUNTER HOURS

MONDAY to FRIDAY 9.00am – 1.00pm

*Free Personal Banking services for
Lloyds/TSB, Barclays, Co-Op, Cahoot and Smile
No Commission Foreign Currency Exchange
Bunches Flowers by Post plus Much, Much More!*

SHOP OPENING HOURS

MONDAY to SATURDAY 7.00am – 6.00pm

SUNDAY 8.00am – 5.00pm

CREDIT & DEBIT CARDS NOW ACCEPTED

(NO MINIMUM FEE)

*Now Stocking a Wide Range of Local Cheeses
(inc. Sharpham and local goat & sheep cheeses)
Fresh Bread Daily - Organic Vegetables
Local Fresh Meat and Dairy Produce
Coal - Logs - Phurnacite - Calor Gas - Off Licence
Newspapers & Magazines - Frozen Foods - Groceries
Local Potatoes £4.00 a sack
Local Agent for Air Ambulance Lottery*

CASH MACHINE & MOBILE PHONE ELECTRONIC TOP UP ALSO AVAILABLE