

# RINGMORE

## PARISH NEWSLETTER

**OCTOBER 2001**

**ISSUE NUMBER 194**

**EDITOR: GEOFF DYKES 810123**

**DEADLINE Fri 26th**

### THIS MONTH

MONDAYS: Short Mat Bowls Parish Room 7.30pm

TUESDAYS: Table Tennis Parish Room 7.30pm

WEDNESDAYS: Step Aerobics Parish Room 8.30pm

THURSDAYS: Quiz Night at Journey's End 9.00pm

5th Harvest Supper Parish Room 7.30pm

RBL Meeting Royal Oak Bigbury 7.30pm

6th Table Top Sale Kingston Reading Room 2.00pm

7th Music Night at the JE

13th Game Cuisine evening JE

15th SH Liaison Meeting 7.30pm South Brent

18th/27th Devon Hedge Week

19th/21st Beer Festival Journey's End

21st Last date to register for Heart Start evening

23rd Parish Council Meeting WI Hall 7.00pm

27th Curry Night at the JE

27th/10th Nov British Legion House-to-House Collection

Nov

2nd Royal British Legion Auction JE

#### Mobile Library

Friday:- 12th & 26th

Ringmore Church

12.05 - 12.30

Challaborough

12.35 - 12.45

St Ann's Chapel

3.15 - 3.30

Kingston Fire Station

3.45 - 4.30

Rainfall - Fiona Batten



Last Month  $\frac{3}{4}$ "

Average - last 10 years - 25"

High - 1995 - 35"

Low - 1996 - 1"

Please send items for inclusion in the Newsletter to:

The Editor

Ringmore Parish Newsletter,

Ringmore Vean, Ringmore, TQ7 4HL

or put them through the letter box in the garage door

### MOLLIE TRUEMAN

Mollie had been house-bound since 1992 which meant that she was unknown to more recent arrivals to the village. Those of us who knew her before she became ill, remember with gratitude the many things she did to help people in this area.

She was the WRVS Organiser for this part of Devon, particularly concerned with arranging holidays for needy children. She served in the last war and was a loyal member of the Royal British Legion. She served on the Parish Council for 12 years; she was secretary of the WI and a willing supporter of the South Hams Society.

Her love, above all, was the Church where she took great care of the flowers in 'her' window. More formally, she served on the PCC and the Deanery Synod. At Christmas, she loved to serve mince pies when the children sang carols at her home. We will miss her.

Friends of Mollie Trueman

*Life in Ringmore seemed even more like a cocoon as the dreadful news from America reached us. However, in this shrinking world it is remarkable how people are interconnected and one or more of us will know someone who has an immediate or indirect association with the tragedy. The event will continue to unfold and the consequences will be far-reaching. At the moment we face an uncertain future which we pray will lead to a safer world.*

*Here in the village the change of season heralds the recommencement of familiar activities. Short Mat Bowls enthusiasts are attempting, with guile or brute force, to vanquish their opponents; Table Tennis exponents are belting a small white ball at, probably, a neighbour with frightening ferocity; Step Aerobics ladies are leaping about in a way which they would not do in public and on Thursday nights a column of weary brains can be seen leaving the Journey's End . . . . and it is all done in the name of fun!*

*This month is the last chance to attend a Heart Start evening, to discover the simple, basic way to help someone in a medical emergency. There is no equipment involved, just a few easy principles to follow. Contact Sandi Hammond 810572 or Margaret Wood. 810265 if you wish to be included. It could be your family that needs the help.*

*Sadly, Mollie Trueman died on 10th September. A number of people have joined in writing an appreciation of the lady and their friendship.*

*A number of future events are highlighted this month, not least being the Royal British Legion fund-raising period at the beginning of November. This starts with the annual Auction at the Journey's End. So, off to the attic to find that valuable piece which can no longer find pride of place on your mantelpiece.*

*With this Newsletter is a Bus Survey driven by the recent changes. Please respond as requested.*

*This issue is awash with quiz answers - the Church Quiz and the Newsletter Quiz. Every attempt was made to be fair in both cases and many alternatives were accepted. The Newsletter Quiz was won by a winner who will be as surprised as we are amazed!*

## POST OFFICE STORES

Daily Deliveries Bigbury-on-Sea 810274

POST OFFICE - GROCERIES - BREAD - DRY CLEANING  
CONFECTIONERY - PHOTOCOPIING - STATIONERY - VIDEOS  
NEWSPAPERS - MILK & CREAM - FRUIT & VEGETABLES  
CREAM BY POST - FRESH LOCAL MEAT - WINES & SPIRITS

Stores open: 9.00am - 5.00pm  
Except: Tuesday 9.00am - 1.00pm  
Sunday 9.00am - Noon  
Post Office open: 9.00am - 1.00pm  
Monday, Tuesday, Thursday, Friday



Car Park

Mick & Carolyn Hunt

All orders promptly serviced & despatched. Friendly & courteous service

## ADVERTISING SPACE IS ALWAYS AVAILABLE

This area for £1 per month

# 810123

## Nicholas HAIR & BEAUTY

8 Church Street, Modbury  
South Devon Tel: Modbury 830152  
Ladies' & Men's Hairdressing & Beauty Salon

or at Marine Hotel, Salcombe, South Devon Tel: Salcombe 843370

### DAY OF BEAUTY

A relaxing and recharging day pampering at the luxurious Marine Hotel; including sauna, swim, solarium, spa bath, full body massage, full Sothys facial. Light lunch in the hotel lounge or restaurant followed by manicure,

## NIGEL FROST

B.Sc.(Hons)

Optometrist

FC Optom

Chene Court, Modbury  
next to car park

01548 830944

Open Weekdays and Saturday Morning  
Contact Lenses, Spectacles, Accessories  
Complete Eye Examination

## A M KING & SONS

Registered Builders

Internal & External Decorations

uPVC Windows & Fascias

Extensions/Conversions

New Kitchen  
or Bathroom

810570



## Rob Batten Car Sales

Quality cars to suit all pockets  
My prices can't be matched



Phone for a chat  
810680



## THE BAKERY MODBURY

Bakers And Grocers  
Farmhouse Bread  
Hovis - Wholemeal



Take-away Snacks  
Sandwiches

01548 830216

Residential  
Care Home

Prop: Gina & Gordon Phillips

## KORNILOFF

Overlooking Burgh Island

A Family-run Home NVQ trained staff

24 hour Care, Home cooking, Special diets catered for,  
Stair Lift, Hairdresser, Chiropodist, Bath Hoist if needed  
Large Single, Double or Twin rooms by choice. Some en-suite

Your Dignity and Privacy is paramount  
Transport can be provided by arrangement  
Devon County Council registered

Warren Road, Bigbury-on-Sea, Devon TQ7 4AZ  
Telephone: 01548 810222



## Canada Life

For a discreet and confidential local service on  
all financial matters that are important to you,  
please feel free to contact me.

Mike Wynne-Powell

Senior Financial Consultant

Company Representative of The Canada Life Marketing Group in relation  
to Life Assurance, Pensions, Unit Trusts and Unit Trust FEP's only.

Canada Life Limited

Canada Crest  
75 Cornhill Street  
Devon  
PL1 2AA

Tel: 01752 269222

473473

Fax: 01752 251279

Home: 01548 810407

## Easton House



If you need  
additional  
space for  
family or  
friends  
call  
Rob or Jo  
on 810644

A weekend in the country



# News from All Hallows

## Who's Who in Bigbury, Kingston and Ringmore Churches

Resident Minister: The Revd John Elliott (810565)

Reader: Michael Tagent (810520)

Team Rector: The Revd Canon Bob Campbell-Smith (830260)

### John and Pam write

This was to be a thank you to all for a very warm welcome and acceptance of two new faces. Well not that new: fairly second hand and well used but you know what we mean. We hoped to focus on a future of hope and expectancy. Then came the horrific events of Tuesday September 11th. None of us escaped the shock and horror, albeit from miles away. Vividly, one American gave thanks to the grace of God that his alarm clock failed so he was not at the World Trade Centre when the planes hit. He gave thanks for grace: "grace" that unmerited favour from God that gives mercy when justice would have us all in trouble for our sins - yes all of us: those who almost live in Church, as well as those who come rarely or never.

In the aftermath, how can we respond? Kipling once wrote:

"I keep six honest serving-men  
(They taught me all I knew)  
Their names are What and Why and When  
And How and Where and Who"

As we respond to the horror and see what emerges, all we can do is pray. "Why did it happen? What can we do, and When and How can do we do it? Where, and for the good of Whom?" It is our hope that we all pray, whether Church regulars or not. Pray that world leaders including Bush and Blair, and also each one of us, tries to serve mankind by seeking wisdom before rushing into action.\*

### Sunday Club's good start

Sunday Club, the new kids' club in Kingston, got off to a good start with over 20 present. Everyone aged 3-11 is welcome; the next meeting is on October 21<sup>st</sup>, meeting in Kingston Church at 11 a.m. before going on to the Reading Room. Come along and find out more!

### PLEASE PRAY

We pray for those who have suffered in America, and, nearer at home, for the Revd Mike Wilkinson, Sylvia Compton and Maurice Sandover. We give thanks for the life of Molly Trueman, and pray for all who mourn her death last month.

### Data Protection

The Data Protection Act regulates the information held about people. PCCs hold data for church membership, rôtas and church activities, with details put on church notice boards. If you are unhappy about your details being published, or feel they are inaccurate, please tell us. You have a right to a copy of all data held on you.

## CHURCH SERVICES IN OCTOBER

### Sunday October 7<sup>th</sup>

9 a.m. Kingston Holy Communion  
11 a.m. Ringmore **Harvest Thanksgiving**  
6 p.m. Bigbury Evening Prayer\*

### Sunday October 14<sup>th</sup>

9 a.m. Ringmore Holy Communion  
11 a.m. Bigbury Worship at Eleven  
6 p.m. Kingston Evening Prayer\*

### Sunday October 21<sup>st</sup>

9 a.m. Bigbury Holy Communion\*  
11 a.m. Kingston Worship at Eleven  
and Sunday Club  
6 p.m. Ringmore Evening Prayer\*

### Sunday October 28<sup>th</sup>

9 a.m. Ringmore Holy Communion\*  
11 a.m. Bigbury Communion at Eleven  
6 p.m. Kingston Evening Prayer

*Book of Common Prayer services are marked \**

## COLLECTORS CHOICE

Antiques & Collectibles

Variety of antiques, valve radios, fountain pens, clocks. Extensive range of Art Deco items. Old and interesting items purchased

For that unusual gift  
Pay us a visit

27 Church St., Modbury Tel 01548 831111



OPPOSITE  
COUNTRY PINE FURNITURE

## BARDENS GARAGE

BIGBURY

Servicing ~ MOT Welding  
Mechanical Repairs ~ Accident Repairs  
Bodywork ~ Repairs  
Breakdown ~ Accident recovery available  
01548 07887  
810627 Proprietor: E Nicklen 610247

## SHEPPARDS

Chartered Accountants

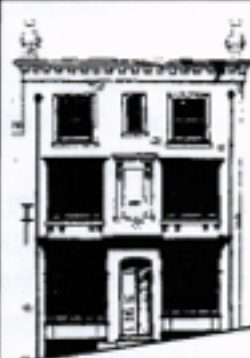
Your Local Accountants

Call Ian or Yvonne Sheppard  
on (01548) 810341 or (01752) 220333  
fax (01752) 221742  
www.sheppardsaccountants.co.uk

Free initial interview & Free Parking

1 Addison Road, North Hill  
Plymouth PL4 8LL

Full Accountancy & Taxation Service



## DEVONSHIRE FINE ART

Antique Watercolours, Oil Paintings, Drawings, Maps and Prints.

Local Watercolours & Prints.

Quality Picture Framing Service.

9 Church Street, Modbury,  
Devon PL21 0QW

Telephone/Fax. (01548) 830872.

## Coach House Photographic

Events and items Photographed  
Valuables catalogued in pictures  
All recorded on to self-running CD's  
and/or printed on high quality  
photographic paper

Contact - Mike Wynne-Powell  
E-mail mwp@softhome.net  
Telephone 01548 810407  
The Coach House Ringmore  
Kingsbridge TQ7 4HJ

## FARE DEALS TRAVEL SERVICES

For all your travel needs

01548 810869

email: ammfare@totalise.co.uk

From Acapulco to Zurich and all points between!

Flights Packages Tailor-made Ferries  
Hotel Insurance etc

Small Agent for AETA, Modbury



# HOLYWELL STORES

**St Ann's Chapel**  
(Opp: Pickwick Inn)

MONDAY to SATURDAY 7.00am - 7.00pm

SUNDAY 8.00am - 6.00pm

**CASH MACHINE NOW AVAILABLE**

*Fresh Baked Bread*

*daily from The Home Bakery, South Brent*

*Hot Pasties and Sandwiches*

*Riverford Organic Vegetables*

*Aune Valley Meats*

*Langage Farm Clotted Cream and Ice Cream*

*Beach Goods - Charcoal - Off Licence*

*Groceries - Newspapers*

**FREE DELIVERY SERVICE TO ALL AREAS**

For more details please telephone 810308

# Journey's End Journal

Well, Summer has drawn to a close, birds are flying south, Paul's pictures are coming down and the Journey's End Thursday night Quiz is under way again - as popular as ever.

This month sees our Autumn Beer Festival starting on Friday 19th and featuring a selection from the micro breweries of Devon and Cornwall. Before this however is our Game Cuisine evening on Saturday 13th; menus are available now and booking is advisable. Then, towards the end of the month on Saturday 27th, we have a Curry Night planned.

We are, of course, hosting the Royal British Legion Poppy Day Appeal Auction on

Friday 2nd November. Full steam ahead to beat last year's total!

Finally, throughout the dark days of Winter, we at the Journey's End, will be producing a weekday Luncheon 'HOT DISH OF THE DAY', those traditional winter warmers - Liver & Onions, Lancashire Hot Pot, Cottage Pie, Braised Kidneys, etc. - all at £2.95! This will replace the 10% locals' discount on a Thursday.

Look out for our revamped  
Autumn Dinner Menu

Stop Press: Cowboys and Park Bench Aristocrats - Sunday 7th October.

Grahame and Debbie



Tel 01548 810205

Mon - Sat Noon - 3.00pm  
6.30pm - 11.00pm

Friday: Early Doors Club 6.00pm

Food: 12.30pm - 2.30pm & 6.30pm - 9.00pm

Sun Noon - 10.30pm

Food: 12.30pm - 2.30pm & 6.30pm - 9.00pm

## St Luke's Hospice Plymouth

Thank you all, once again, for your generous response to this year's appeal. The total raised was £134.

Drina Williams.

## The Royal British Legion

The September meeting was held on Wednesday 5th at the Royal Oak, Bigbury and was very well attended (in anticipation of the talk by Geof Dykes no doubt).

The meeting was informed Mollie Trueman was in hospital, but as we know she passed away on Monday night, 10th September. She will be sadly missed.

The arrangements for this year's Poppy Appeal were also discussed and details are available elsewhere in the newsletter.

We were entertained to a fascinating, but brief, history of the United States of America which was most interesting especially with the map which accompanied the talk and historical dates included (yes, even the Boston Tea Party). Unfortunately FIFA did not consult the Branch when it arranged the match between Germany and England and Geof had some competition. However, the best man won! Perhaps we will be able to persuade him to visit the Branch again in the New Year when, hopefully, the fixture list will be published well in advance.

Colin Jackson  
Acting Secretary

### 100 CLUB

July	£20	Mr M Pitt
	£5	Mr B Lambell
August	£20	Mr A Singleton
	£5	Mr J Stevenson
Sept	£20	Mr P Newton
	£5	Mr B Old

### POPPY APPEAL

Well, that time of year has come round again, even more quickly than before. I was wondering what I could do to help the RBL Poppy Appeal and several silly ideas came to mind (as they do!). I could go on a sponsored slim - no, been there, done that. Bungee jump - afraid of heights; parachute jump - done that, didn't much care for it. So what can I do? It's not original for sure, but I thought the funniest thing would be to go blonde on Auction Night in aid of the Poppy Appeal (only if I receive enough sponsorship though.) I told you it wasn't original, but I would be grateful for some encouragement before the Auction on 2nd November. Oh! By the way, I haven't told Alan yet, so let's just keep it between ourselves.

Robbie McCarthy

## TABLE TOP SALE

KINGSTON READING ROOM

SATURDAY 6TH OCTOBER

Set-up at 1.30

SALE

2.00pm - 4.00pm

All unsold goods  
must be removed  
at the end

In aid of Kingston Church Tower Restoration Fund

Janet Gilbreath  
810721  
for details



WOMEN IN THE COMMUNITY

The September meeting was taken by Margaret Wood in the absence of Pat King, the President.

Members stood in silence at the start of the meeting to remember Mollie Trueman who died this month. Mollie was a faithful member for many years before becoming ill; she will be missed by her many friends in the WI.

The speaker was James Stevenson who gave us a talk on Pottery in Portugal which was very informative and at times, hilarious. As well as describing the various types of pottery and showing colourful examples, he led us on virtually a guided tour of coastal Portugal with appropriate anecdotes at each stopping place! Members greatly enjoyed the trip.

Next month we have our own Thelma Mann telling us how to make Chelsea Buns - with demonstrations!

Naomi Wame

# M and J P Builders

All types of building work  
undertaken

New Buildings

Renovations

20 years experience  
in Building Trade

For FREE Estimates and Advice  
please phone  
810633

If You Have  
Something  
You Wish  
to  
Advertise  
call  
810123



## PRE-TEXT

Graphics Design / Artwork  
Flyers/Posters/Leaflets/Advertisements  
Overhead Foils - Design & Preparation  
Logo Design  
All aspects of Desk Top Publishing

GEOF DYKES, RINGMORE VEAN, RINGMORE, TQ7 4HL  
TEL 810123

## TILLY DOWNING B.Sc. Pod., M.Ch. S.

STATE REGISTERED CHIROPODIST



*Surgery or Home Visit  
Three Years Training  
Safe & Thorough*

The Laurels, Fore Street, Aveton Gifford  
Tel: 01548 550072

*Opposite the Memorial Hall Car Park*



## BIGBURY SHOP & POST OFFICE

Daily Deliveries - No order too small - Just give us a ring

Bread + Fruit & Veg + Milk & Dairy Products  
Newspapers & Magazines  
Best Back Bacon + Ham + Tongue + Cheese  
any amount cut

SHOP  
Daily 8.00am - 4.00pm  
Sunday 9.00am - 1.00pm  
01548 810213

Aune Valley Meat  
Calor Gas & Coal  
John & Margaret Inman

POST OFFICE  
9.00am - 1.00pm  
Monday to Friday  
01548 810213

Julie   
Fully Qualified  
Mobile Hair-stylist

Ladies & Gents  
Competitive Prices  
Ansaphone available

Bigbury-on-Sea  
810634

# ADVERTISING SPACE IS ALWAYS AVAILABLE

THIS AREA FOR £1 PER MONTH

# 810123

## HIRAM BOWDEN



Repairs  
Servicing  
MOT

Cars collected & returned  
Tel: 550129  
Evening 01752 896065



## Jinny McCabe Wedding Florist

Bouquets

Church & Marquee  
Decoration

Windwood Farm  
Ringmore  
Kingsbridge, TQ7 4HL  
Tel: 01548 810538

## Kevin Light

PLUMBING & HEATING  
CORGI & A.C.O.P. Reg.

Wychbury  
Ringmore Drive  
Bigbury on Sea

Tel 01548 810726  
Mobile 07721 955506

## FOR 'REAL' CHEESE & WINE

**MACKGILLS** + *Handcut Farmhouse English & Continental Cheese*



DELICATESSEN

- + *Home-cooked Ham & Salamis*
- + *Home-cooked Pies & Cakes etc.*
- + *Wine, Beer, Sherry & Cider . . . and much more*

Telephone Enquiries Welcome

4 Church Street, Modbury, Devon PL21 0QW  
Telephone: Modbury (01548) 830860

# THE NEWSLETTER QUIZ

Before commenting on the quiz, the entries, the entrants and the answers, it is imperative to thank everyone who took part and thereby supported the Newsletter. After the prize money has been deducted there will be a surplus of £32 which will go a long way towards the production costs for one month.

In the opening gambit on the Quiz sheet it was suggested that the clues might induce the odd wince or two. Well, in addition, a few groans were heard and now the editorial team is bracing itself for the howls of protests. As always in a quiz there will always be possible alternative answers. Some are clever, some are facetious, others are simply wrong. One or two do continue to niggle because they defy elimination and continue to force their claim with every successive entry which offers the same option. After much anguish, the editor decided that no matter how ingenious, i.e. correct, the alternatives

were, they would be unacceptable as they did not match the answer sheet. Unacceptable, that is, until the proof editor stamped her foot! So some alternatives, usually because of weight of numbers, have been accepted but you will detect an editorial whinge underlying some of the comments.

Of the 38 possible, 18 entries were received. Very few entrants left blank spaces even if some of the answers given were wide of the mark. Some answers had good alternatives, some were more difficult to understand and some were unintelligible!

**Chesterfield** was accepted instead of **Marlborough**; **Arbroath** was not! **Puffin Island** was brilliant. **Hyde** was not accepted for **Leatherhead** (**Horne was good**), for reasons which anyone who did not offer **Hyde** will understand! **Canterbury** seemed the only way to get fruit moving at speed until **Rushbury** appeared. **Marwell** was good enough instead of **Motherwell**, a) because it is local, b) it probably fits the clue better and c) it did not affect the result!

**Scotch Corner** is a well-known junction where the A66 and the A1 converge. It is often in the Traffic Reports either because of an accident or the weather. So other answers like **Hand Cross** or **Mile End**, although possibly, maybe technically correct if argued to the nth degree, are not significant. Similarly, **Crossgill** in Lancashire was 'unknown' until this quiz but it cleverly follows the theme of the correct answer.

'ow to look for rabbits? **Ide**, near Exeter, was a witty, accepted option.

Where is **Gasper**? Is it a place or an expression of exasperation? It is not in the master gazeteer so it cannot be accepted. In place of **Coldstream** although **Windrush** was.

Sounds like a modest meal. This produced the most 'correct' variations and no-one suggested **Chippenham** which was the 'right' answer. **Sandwich** was the most popular answer and was accepted after the intercession of the proof reader. It is presumed these were not enormous Club sandwiches! **Little Eaton** implies a modest consumption and therefore cannot be rejected; nor could **Littleham**.

**Padstow** was good but **Felixstowe** was right.

**Harold. Eye. Battle. Hastings and Wilson** were all wrong. **Harold Fort William!**

Few managed **Plymouth** and fewer managed **Preston**, most preferring to get bogged down with the technicalities of velcro with **Hook**. The proof reader's son accepted that! Who edits the Newsletter?

Friendly Australian encouragement. **Oswestry** (should it be **Osbrucetry?**), **Bute** and **Alloa** are amusing if spoken with the accent but **Gosport** is the only answer.

Finally, everyone can hold their head high as none failed to get **Ringmore!**

Congratulations are due, in the Editor's opinion, to those who got **Paisley, Stirling**, particularly **Kirkbride** (live long and prosper), **Plymouth, Preston** and **Gosport**.

So to the entrants. Some were from those who would be expected to enter these competitions. Some were from unexpected quarters (one came from Nottingham and one from Boggy Swamp Circle in South Carolina) and one or two were from furry friends. **Megan the Cat Parkin** and **Moss the Dog Parkin** entered in competition with the human Parkins. It takes all sorts!



**Now, the results.**  
The scores ran 20,29,31, 32, 32, 32, 34, 34, 35, 35, 36, 37 and then as follows:  
Colin Jackson 39  
Pat and Barry Old 39  
James and Gillian Parkin 41  
Sally and Phillip Errett 41  
Di and Denis Collinson 42  
Megan the Cat Parkin 43

Shattered dreams? I hope not. Well done everyone but the Cat has it! A large box of cat food is on the way James but get rid of the dog, you have been sold a pup!

It does seem that many enjoyed the challenge. One day, maybe, perhaps, who knows, we'll do it again.

**TEN YEARS AGO . . .**  
There was no Newsletter published in October 1991.

- |    |   |                          |
|----|---|--------------------------|
| 1  | Does everyone here smoke?                           | <i>Marlborough</i>       |
| 2  | Behold the accident frequently                      | <i>Lowestoft</i>         |
| 3  | Not a paper tiger; a paper 007.                     | <i>Basilton</i>          |
| 4  | Time to start the card game                         | <i>Deal</i>              |
| 5  | On behalf of at a distance                          | <i>Forfar</i>            |
| 6  | Foremost part of a cow                              | <i>Leatherhead</i>       |
| 7  | Refuge for albinos                                  | <i>Whitehaven</i>        |
| 8  | Tumbrel used for solid fuel                         | <i>Narrow in Furness</i> |
| 9  | Hedera span   | <i>Hybridge</i>          |
| 10 | Is this Botticelli's Titian Lady?                   | <i>Redruth</i>           |
| 11 | A rock on the dock                                  | <i>Torquay</i>           |
| 12 | Tease without end                                   | <i>Tunston</i>           |
| 13 | Comply with 'ighwayman's demand                     | <i>Andover</i>           |
| 14 | Monolith of the people                              | <i>Folkestone</i>        |
| 15 | Gain part of Cheshire as a prize                    | <i>Winchester</i>        |
| 16 | How to get fruit to move at speed                   | <i>Canterbury</i>        |
| 17 | Neither warlock . . . . .                           | <i>Norwich</i>           |
| 18 | Dad's other half in good health                     | <i>Motherwell</i>        |
| 19 | Get a measure at this junction                      | <i>Scotch Corner</i>     |
| 20 | What detectives need                                | <i>Leeds</i>             |
| 21 | Tree Trunk Call                                     | <i>Ringwood</i>          |
| 22 | More prominent in Northern Ireland than Scotland    | <i>Paisley</i>           |
| 23 | Bête noir of Europhiles                             | <i>Stirling</i>          |
| 24 | After this date it might not be good enough         | <i>Selby</i>             |
| 25 | Sister Mary after dinner                            | <i>Nunston</i>           |
| 26 | Innovative outdoor retail site                      | <i>Newmarket</i>         |
| 27 | Mrs James T . . . .                                 | <i>Kirkbride</i>         |
| 28 | A marriage between a poet and an economist          | <i>Milton Keynes</i>     |
| 29 | 'ow to look for rabbits                             | <i>Edinburgh</i>         |
| 30 | Where the bottom of the class eats                  | <i>Dunstable</i>         |
| 31 | An attempt by some witches                          | <i>Coventry</i>          |
| 32 | A call in Oxfordshire to exclude part of Lancashire | <i>Banbury</i>           |
| 33 | Takes your breath away                              | <i>Coldstream</i>        |
| 34 | Ferrari   | <i>Redcar</i>            |
| 35 | Sounds like a modest meal                           | <i>Chippenham</i>        |
| 36 | A tree filmed                                       | <i>Aldershot</i>         |
| 37 | Best place for a date                               | <i>Callendar</i>         |
| 38 | Was this Adam's favourite food?                     | <i>Evesham</i>           |

- |    |   |                     |
|----|---|---------------------|
| 39 | Part of a cat's paw   | <i>Felixstowe</i>   |
| 40 | Harold  | <i>Fort William</i> |
| 41 | Make regular trips over route, north and south  | <i>Plymouth</i>     |
| 42 | Was this an inspiration for P G Wodehouse?  | <i>Worcester</i>    |
| 43 | How the top is joined to the bottom with velcro   | <i>Preston</i>      |
| 44 | Bread and milk at the office  | <i>Workshop</i>     |
| 45 | If you are wearing it when sitting on it you are sitting on it twice  | <i>Chesterfield</i> |
| 46 | Why Martin Bell stood for parliament  | <i>Hamilton</i>     |
| 47 | 1135 - 1154   | <i>Stevenson</i>    |
| 48 | Friendly Australian encouragement   | <i>Gosport</i>      |
| 49 | Stops Her Majesty from getting wet feet   | <i>Queensferry</i>  |
| 50 |  as opposed to  | <i>Ringmore</i>     |



# The Royal Oak Bigbury



Telephone: (01548) 810313

Enjoy good homemade food in our cosy bar area or sit in the lounge or restaurant areas and choose from either the bar menu or our a la carte specials board.

We provide only the best quality food - all freshly cooked on the premises and at reasonable prices.

Open for meals 7 days a week, lunchtimes and evenings. Choice of 5 real ales, all served direct from the cask. Full range of keg lagers and bitters.

Refurbished en-suite accommodation - Large car park and garden

## SAT 6th OCTOBER

**HELP US TO RAISE MONEY IN AID OF THE BRITS AND RESCUE WORKERS WHOSE FAMILIES WILL SUFFER BECAUSE OF THE TERRIBLE ATROCITIES CARRIED OUT IN NEW YORK. LIVE MUSIC WITH THE 'ARTFUL DODGERS' (KINDLY DONATING THEIR FEE FOR THE EVENING TO THE FUND) MEGA PRIZE RAFFLE ETC. ALL PROCEEDS TO THE FUNDRAISING**

## OCTOBER DIARY

- Mon 1st - Euchre Drive starts again - every Mon 8pm*  
*Sat 6th - Fundraising Evening in aid of the New York disaster*  
*Live music with the 'Artful Dodgers'*  
*Sat 13th - Sat 20th - Mexican Theme Week - Mexican meals*  
*Tequila Cocktails, Mexican Beers etc all week*  
*Wed 24th - Louise's last night before her long holiday!!!!*  
*Another fun party night*  
*Wed 31st - Haloween???????*  
*Diary for early November*  
*Mon 5th - Bonfire Night with fireworks and Mulled Wine*  
*Wed 7th - R.B.L. Meeting and poppy appeal fundraising - also*  
*Martin's birthday - don't miss out on the specials tonight*



## The Church Quiz ANSWERS

Seven quiz papers were returned, all of which scored well. One or two questions permitted answers other than the 'official' one. For example, Octuple (26) also means 'eightfold'; Auckland as well as Edinburgh has hosted the Commonwealth Games twice (33) and 3M (70) could reasonably be the Three Musketeers. Allowing for these, however, there was a clear winner, whose identity is to be revealed at the Church Harvest Supper. Thank you to all who took part (whether submitting answers or not!).

### ANSWERS

- |    |  |    |                                   |       |   |
|----|--|----|-----------------------------------|-------|---|
| 1  | Dec 28th                                   | 22 | Liberty Horse                     | 64    | Weeks in a year                           |
| 2  | Seth                                       | 23 | Deer 3rd year                     | 65    | Players in a football team                |
| 3  | Izaak Walton                               | 24 | George                            | 66    | Legs on a spider                          |
| 4  | Nide                                       | 25 | Digamist                          | 67    | Signs of the zodiac                       |
| 5  | Millicent Margaret Amanda                  | 26 | In rowing - an eight sculler      | 68    | Seconds in a minute                       |
| 6  | Cynophobia                                 | 27 | 1874                              | 69    | Overture by Tchaikovsky                   |
| 7  | Iron Age                                   | 28 | Jewish Day of Atonement           | 70    | Magi/Musketeers                           |
| 8  | Artemis/Selene                             | 29 | Skłodowska                        | 71    | Degrees in a circle                       |
| 9  | Lehar                                      | 30 | Anne/Anna and Joachim             | 72    | Maximum score in darts                    |
| 10 | T E Lawrence                               | 31 | Drowned Channel swimmer 1954      | 73    | Wonders of the world                      |
| 11 | Bones and Teeth                            | 32 | Scrabble                          | 74    | Green bottles hanging on the wall         |
| 12 | In the game of Curling                     | 33 | Edinburgh & Auckland              | 75    | Dots on a dice                            |
| 13 | Pilate's wife, att 27.19                   | 34 | Colorado                          | 76    | Counties in Northern Ireland              |
| 14 | The Pickwick Papers                        | 35 | Runnymede 1215                    | 77    | Colours in the rainbow                    |
| 15 | Leyton Orient                              | 36 | Russia                            | 78    | Men in a boat                             |
| 16 | The Gospel must be preached to all nations | 37 | Robert Carlyle                    | 79    | Sides on a fifty pence piece              |
| 17 | Muhammed Ali                               | 38 | Robert the Bruce                  | 80    | Days of Christmas                         |
| 18 | Road to Hong Kong                          | 39 | Elizabeth                         | 81    | Sunset Strip                              |
| 19 | The Bible, Proverbs 15.1                   | 40 | Donald Coggan                     | 82    | Quarts in a gallon                        |
| 20 | Yo-yo                                      | 41 | H E Bates                         | 83    | Coronation year                           |
|    |  | 42 | Death of the first born Ex 12.29  | 84    | Squares on a chess board                  |
|    |  | 43 | Christopher Robin                 | 85    | Quires in a ream                          |
|    |  | 44 | The Wizard of Oz                  | 86    | Toes on each foot                         |
|    |  | 45 | Herman's Hermits                  | 87/88 | Days in a leap year. Omitted due to error |
|    |  | 46 | Revelation 22.21                  | 89    | Trombones in the big parade               |
|    |  | 47 | Jim Reeves                        | 90    | Weeks in a fortnight                      |
|    |  | 48 | Ice Hockey                        | 91    | Leagues under the sea                     |
|    |  | 49 | Clampett                          | 92    | Books in the New Testament                |
|    |  | 50 | George VI                         | 93    | Grammes in a pound                        |
|    |  | 51 | Softly Softly and Barlow at Large | 94    | Piano keys (black and white)              |
|    |  | 52 | Ararat                            | 95    | Old pence in the pound                    |
|    |  | 53 | Pecora                            | 96    | Seasons in a year                         |
|    |  | 54 | The Boxer, Rocky Marciano         | 97    | Holes on a golf course                    |
|    |  | 55 | 1066                              | 98    | Book by George Orwell                     |
|    |  | 56 | Aesop (The Milkmaid and her pail) | 99    | Sides on a triangle                       |
|    |  | 57 | Taiwan                            | 100   | Years in a Golden Wedding                 |
|    |  | 58 | Silver                            |       |   |
|    |  | 59 | Sir Humphrey Davey                |       |   |
|    |  | 60 | Duck                              |       |   |
|    |  | 61 | Wise men                          |       |   |
|    |  | 62 | Pence in a pound                  |       |   |
|    |  | 63 | Feet in a yard                    |       |   |



## September SOLUTION

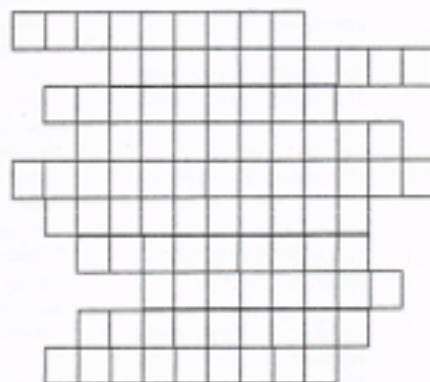
'Like all other arts, the science of deduction and analysis is one which can only be acquired by long and patient study, nor is life long enough to allow any mortal to attain the highest possible perfection in it.' A catchy little conversation-stopper from Arthur Conan Doyle.

'Well Done' to Matchman, The Furry Boys, Gemini, The Beginners, Taurus and the Gasworks Gang? This is a new name. Welcome but please do not leave it so late next month.

## October

Combine the words listed below to form longer words which will fit into the grid.

BID OR SUB GIN RAT ON VENT ION  
 ABLE TOR TEND OR DEN ALLY  
 REST AT ME CHEST MEN DISC  
 MAR OR TENT FOR JUG IN WHERE  
 ANT TOT ATE SO



- |       |   |
|-------|---|
| 64    | Weeks in a year                           |
| 65    | Players in a football team                |
| 66    | Legs on a spider                          |
| 67    | Signs of the zodiac                       |
| 68    | Seconds in a minute                       |
| 69    | Overture by Tchaikovsky                   |
| 70    | Magi/Musketeers                           |
| 71    | Degrees in a circle                       |
| 72    | Maximum score in darts                    |
| 73    | Wonders of the world                      |
| 74    | Green bottles hanging on the wall         |
| 75    | Dots on a dice                            |
| 76    | Counties in Northern Ireland              |
| 77    | Colours in the rainbow                    |
| 78    | Men in a boat                             |
| 79    | Sides on a fifty pence piece              |
| 80    | Days of Christmas                         |
| 81    | Sunset Strip                              |
| 82    | Quarts in a gallon                        |
| 83    | Coronation year                           |
| 84    | Squares on a chess board                  |
| 85    | Quires in a ream                          |
| 86    | Toes on each foot                         |
| 87/88 | Days in a leap year. Omitted due to error |
| 89    | Trombones in the big parade               |
| 90    | Weeks in a fortnight                      |
| 91    | Leagues under the sea                     |
| 92    | Books in the New Testament                |
| 93    | Grammes in a pound                        |
| 94    | Piano keys (black and white)              |
| 95    | Old pence in the pound                    |
| 96    | Seasons in a year                         |
| 97    | Holes on a golf course                    |
| 98    | Book by George Orwell                     |
| 99    | Sides on a triangle                       |
| 100   | Years in a Golden Wedding                 |

The result will be based on 98 questions only.



## RINGMORE PARISH COUNCIL

Meeting: Tuesday 19th August  
Present: 5 Councillors, the Clerk.  
Neighbourhood Watch: David Young  
Millennium Committee: Guy Eddy.  
Apologies from Rob Batten.

### Matters Arising

Wheelchair: Cllr Freeman is making enquiries.

Meeting venue: The Table Tennis Club has kindly offered to vacate the Parish Room on the penultimate Tuesday of the month, starting on 23rd October, if the WI Hall is unusable.

Large Delivery Vehicles: Park Dean, Challaborough Bay, have written to their suppliers regarding the use of smaller vehicles. They pointed out that they have no control over other large vehicles which come through Ringmore to Challaborough.

### Matters Raised by Parishioners

Sandi Hammond emphasised the need for a more widely-spread basic knowledge of what to do in an emergency. She is willing to arrange another Heart Start evening but a few more names are needed to make it possible. Please ring on 810572 by 21st October..

### District Council

Brian Carson reported that the 2002 budgets will be published shortly. A new building will be erected at Tor Quarry to facilitate waste management.

### Footpaths

Cllr Muller reported that all was in order. Brian Carson will contact South Hams with a view to arranging a meeting about the flooding in Darkie Lane.

### Millennium Bank

In the absence of Mr Eddy, Cllr Muller reported that stakes were needed to support those trees which had survived. The council agreed to purchase the requisite number. Help will be sought in due course.

### Planning Applications

- Swimming Pool at the Park Dean Holiday Park at Challaborough.  
- The creation of living accommodation above the garage at Mandava.  
The Council had no objection to either application.

### Any Other Business

Cllr Freeman said that he thought that the creation of a bank at Seven Stones Cross interfered with drivers' sightlines. The Clerk will investigate the status of the new entrance to the rear garden of 1 Cumberland Cottages.

### Next Meeting

Tuesday 23rd October. The venue will be shown in the published agenda.

Jackie Tagent

**MUSIC AT THE PADDOCK**  
WITH FRANK & DRINA  
**Monday:**  
15th Oct 12th Nov 10th Dec  
14th Jan 18th Feb 18th Mar

## KORNILOFF

There are opportunities for local people to work at this nearby Retirement Home

Work times are flexible.  
There are vacancies for Full-Time and Part-Time work to cover Mornings - Evenings Weekends

The tasks cover Domestic work and/or Caring

Pay Rates are above the minimum rate but they do vary according to age and experience

There is also an opportunity for a part-time cook

Call Mrs Gina Phillips on 810222

## RINGMORE TABLE TENNIS CLUB

# XMAS PARTY

SATURDAY 24TH NOVEMBER

7.30 TILL LATE

Dancing to

## ROCK GENTLY

ADMISSION: £7

SUPPER & FIRST DRINK

The colour theme is

RED

TICKETS: PHIL ERRET, BARRY OLD, JIM MCGINLEY

# Modbury TIC

The season for local events is drawing to a close. One yet to come, which might be of interest to some, is the seventh Devon Hedge Week which runs from 18th - 27th

Bigbury, Kingston and Ringmore Branch

## The Royal British Legion Poppy Appeal 2001

This year will be the 80th anniversary of the formation of the Royal British Legion and it's need now is every bit as vital as it was when it was formed. It is in the nature of the British to get involved in world trouble spots, these days mostly as peacemakers, which can be a high-risk occupation. Our servicemen and women are respected by all and in consequence are in the forefront and at greatest risk. They need our support when things go wrong. In a different way our ex-servicemen and their dependants are getting older; the majority, the Second World War veterans, are all in their 70s at least and many need the support from the RBL.

Last year the Poppy Appeal nationally topped £20 million for the very first time; a wonderful achievement. We, in our three parishes, have passed £3,600 for the last three years and our immediate target is to top £3,750 which would represent £3 per head of our 1,250 population - a figure as high as any in the country.

ONCE AGAIN WE ASK FOR YOUR  
WONDERFUL SUPPORT

As in years gone by we are running a number of fund-raising activities during this period.

### Provisional Diary of Events

Sat 27th Oct - Sat 10th Nov

House-to-House Collection

Friday 2nd November

Auction at Journey's End

Items for sale and Pledges wanted

Whisky raffle at end of evening

Wednesday 7th November

Activity at Royal Oak to be arranged

Saturday 10th November

Coffee Morning at Sedgewell Sands

Bigbury on Sea. 10.30am Cake

Stall, Bring & Buy, Raffles

Sunday 11th November

Remembrance Service

at Ringmore 10.50am

Monday 12th November

Whist Drive - Venue tba

Please watch for posters later.

Guy Eddy  
Poppy Appeal Organiser

October. There is a variety of activities planned, covering Hedge Laying and Management, Ancient Hedges, Basket Making, Hedgerow Wildlife, etc.

Hedge Laying in the South Hams is on Saturday 27th. A copy of the full programme is available from the TIC.

During October the office will open only in the morning before closing for the Winter.