

RINGMORE

PARISH NEWSLETTER

JULY 2001

ISSUE NUMBER 191

EDITOR: GEOFF DYKES 610123

DEADLINE Wed 25th

THIS MONTH

WEDNESDAYS: New Aerobics Parish Room 8.30pm

- 4th RBL Meeting 7.30pm Royal Oak Bigbury
- 19th Transport Meeting 7.30pm Memorial Hall St Ann's
- 24th Parish Council Meeting WI Hall 7.00pm
- 28th RBL Women's Section Cream Tea Sedgewell Sands
- 29th Summer Singalong 8.00pm All Hallows Ringmore
- Aug
- 1st WI Summer Fayre WI Hall 2.00pm
- 2nd Bigbury Fête 2.15pm Bigbury Court Farmhouse
- 4th Kingston Fête 2.00pm by the Church

Mobile Library

Friday:- 20th only

Ringmore Church

12.05 - 12.30

Challaborough

12.35 - 12.45

St Ann's Chapel

3.15 - 3.30

Kingston Fire Station

3.45 - 4.30

Rainfall - Fiona Batten



Last Month 2"

Average - last 10 years - 2"
High - 1991 - 4 1/4"
Low - 1992/1993 - 1/2"

The Parish Council decided at the June meeting to continue with only six members in the wake of Carol Allan's resignation. As no names were submitted to SHDC and no interest was expressed to the council, there seemed no merit in attempting to engender interest where there is none.

By the time this is read, it will be known if the WI Barbecue survived the weather at the second time of asking. It is, at the very least, disappointing when the efforts of preparation are dashed at the last minute.

Please be aware that due to vehicle maintenance, the visit on 20th July, by the Library van will be its only appearance this month.

On 19th there will be a meeting in the Memorial Hall, St Ann's Chapel convened by the South Hams Rural Transport Forum to discuss the new timetable for the local bus service. As you know, Ringmore has not suffered unduly as a result of the new arrangements but Bigbury has experienced a dramatic reduction in the level of service. This is an opportunity to tell those responsible of the effects which decisions, taken many miles away, have on the local community and economy. It does seem odd to have chosen the beginning of the holiday season to make it difficult for people to find public transport.

Already preparations are under way for the two Summer Fêtes. The WI will hold theirs on 1st August and the Church's will be on August Bank Holiday. It will not be long before slips of paper appear on the door mat, requesting help in a variety of ways. It would not be Summer without them!

Anyone who has suffered a break-in will have sympathy for the Milne-Smith family. Fortunately the consequences could have been worse.

Please send items for inclusion in the Newsletter to:

The Editor

Ringmore Parish Newsletter,

Ringmore Vein, Ringmore, TQ7 4HL

or put them in the letter box in the garage door

Welcome back

Sally and Len Howe have found the attractions of Ringmore too strong to resist! Having once owned Folletts, they have returned to the village and have moved into Maple Bank - permanently! They always enjoyed their visits to Ringmore and now they can enjoy them all the more for not having first to make a long journey.

We welcome them and wish them a long a happy stay in their new home.

COLLECTORS CHOICE

Antiques & Collectibles

Variety of antiques, valve radios, fountain pens, clocks. Extensive range of Art Deco items. Old and interesting items purchased



OPPOSITE COUNTRY FINE FURNITURE

For that unusual gift
Pay us a visit

27 Church St., Modbury Tel 01548 831111

BARDENS GARAGE

BIGBURY

Servicing ~ MOT Welding

Mechanical Repairs ~ Accident Repairs

Bodywork ~ Repairs

Breakdown ~ Accident recovery available

01548 07887

810627 Proprietor: E Nicklen 610247

SHEPPARDS

Chartered Accountants

Your Local Accountants

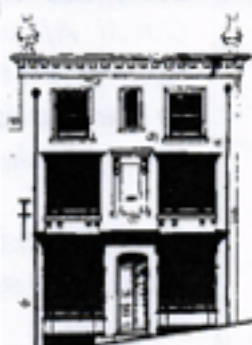
Call Ian or Yvonne Sheppard
on (01548) 810341 or (01752) 220333
fax (01752) 221742

www.sheppardsaccountants.co.uk

Free initial interview & Free Parking

1 Addison Road, North Hill
Plymouth PL4 8LL

Full Accountancy & Taxation Service



DEVONSHIRE FINE ART

Antique Watercolours, Oil Paintings, Drawings, Maps and Prints.

Local Watercolours & Prints.

Quality Picture Framing Service.

9 Church Street, Modbury,

Devon PL21 0QW

Telephone/Fax. (01548) 830872.

Even this space would be sold but would anyone want it?

ADVERTISING SPACE

IS

ALWAYS AVAILABLE

This size for £1 per month please ring

810123

FARE DEALS TRAVEL SERVICES

For all your travel needs

01548 810869

email: ammfare@totalise.co.uk

From Acapulco to Zurich and all points between!

Flights Packages Tailor-made Ferries
Hotel Insurance etc

Local Agent for AGL holidays



W0790

HOLYWELL STORES

St Ann's Chapel (Opp: Pickwick Inn)

MONDAY to SATURDAY 7.00am - 7.00pm

SUNDAY 8.00am - 6.00pm

CASH MACHINE NOW AVAILABLE

Fresh Baked Bread

daily from The Home Bakery, South Brent

Hot Pasties and Sandwiches

Riverford Organic Vegetables

Aune Valley Meats

Langage Farm Clotted Cream and Ice Cream

Beach Goods - Charcoal - Off Licence

Groceries - Newspapers

FREE DELIVERY SERVICE TO ALL AREAS

For more details please telephone 810308

News from All Hallows



Who's Who in Bigbury, Kingston and Ringmore Churches

Team Rector: The Revd Canon Bob Campbell-Smith (830260)

Clergy: The Revd Michael Wilkinson (810424)

Reader: Michael Tagent (810520)

John Elliott's licensing

We hope that John Elliott, our new Resident Minister, will be licensed at the beginning of September, but the date depends on the Bishop's diary. The licensing will take place in Ringmore, with refreshments afterwards in the W.I. Hall.

FETE DATES

Kingston

In front of the Church

Saturday August 4th

at 2 p.m.

Bigbury
Bigbury
Court Farmhouse
Thursday August 2nd
at 2.15 p.m.

Ringmore
Field next to Church House
Monday August 27th
at 2 p.m.

Fund-Raising Successes

The Ringmore Flower Festival and the Bigbury Spring Fair at the end of May were a great success all round. The former raised over £2,650 and this will go towards Ringmore's major renovation programme; the latter raised £350 which will be added to Bigbury church's funds. Many thanks to all who helped.

RINGMORE PARISH ROOM

Some time ago, Ringmore PCC stated that they wanted the Ringmore Parish Room to be used widely by both church and community. To achieve this, they plan to lease the premises to an independent committee drawn from the village. This requires a Charity Commission Scheme and the formal notices have been displayed outside the church and Parish Room. The terms of the lease must of course be acceptable to both the church and the new committee. Once the Scheme has been approved, the lease itself can be drawn up and approved by all parties.

Sunday Club

Kingston Church are starting a Sunday Club on the third Sunday of the month. The Club will have two groups, aged 3-5 and 5-10, and will be open to children in Bigbury and Ringmore as well as in Kingston. The children meet in church at 11 a.m. before moving across to the Reading Room for their own varied programme. Club kicks off with a special activity on Saturday September 15, followed by the initial meeting the following day. More details will follow!

CHURCH SERVICES IN JULY

Sunday July 1st

9 a.m. Kingston Holy Communion
11 a.m. Ringmore Worship at Eleven
6 p.m. Bigbury Evening Prayer*

Sunday July 8th

9 a.m. Ringmore Holy Communion
11 a.m. Bigbury Baptism at Eleven
6 p.m. Kingston Evening Prayer*

Sunday July 15th

9 a.m. Bigbury Holy Communion*
11 a.m. Kingston Worship at Eleven
6 p.m. Ringmore Evening Prayer

Sunday July 22nd

9 a.m. Ringmore Holy Communion*
11 a.m. Bigbury Communion at Eleven
6 p.m. Kingston Evening Prayer
8 p.m. Ringmore Summer Singalong

Sunday July 29th

10.30 a.m. United Team Holy Communion in Aveton Gifford

8 p.m. Ringmore Summer Singalong

*Book of Common Prayer services are marked **

Journey's End Journal

The sun has got its hat on, hip hip hooray! We're not quite sure for how long but it makes a welcome change from all the rain we've had.

Unfortunately, the reverse side is that people are spending too long on the beach and not enough in the pub! However, we started off June on a high note with a super steak evening, a fantastic turnout, thoroughly enjoyed by everyone.

This was followed by an interesting, amusing and witty talk from Brian McCabe at the British Legion meeting.

The last quiz of the season was Grahame's Quiz. This rounded off the month and followed the precedent set last year with an abundance of tastings: red & white wine, whisky, gin, alcopops, salami, cheeses, beer, nuts, cola, fruit cake, tea and pasta. What a mixture! Well done to all those who entered. July kicks off with music from Fiona on 6th; we have New Blues due on 13th; our popular Steak

Night returns on Wednesday 18th, booking advisable; Wendy will be here on 20th and the month ends with 'Sweet 'n' Hot' playing on 28th.

Over the last three weeks we have found that our green bin in our car park is being filled with rubbish during the week, leaving us no room for our rubbish at the week end. You may not be aware that we have to pay to have our bins emptied as we are a business. It causes us immense problems of knowing what to do with our rubbish. Please would the person or persons find somewhere else for their rubbish. Thank you.

Please note that throughout July we will remain closed on Mondays.

We hope everyone who has been on holiday has had a good time and arrived back tanned and relaxed. We look forward to hearing all about it.

Grahame and Debbie

The Royal British Legion

For the diary - our next meeting will be on 4 July 2001 at the Royal Oak, Bigbury at 7.30 pm where the speaker will be Geof Dykes. There is no meeting in August.

Following our June meeting we were entertained by Brian McCabe who gave us an insight into life on board HMS Whitesands Bay in 1948 and 1949. He started his tale up Sliema Creek without his paddle - or in this case a propeller. It was however, connected to the jetty. As the Captain had 'put the ship ashore' he was sent home, as was the First Officer. There the ship stayed, forgotten by the Royal Navy for some time. The new officers were eventually sent to join the ship, by which time so many tinned milk containers had been thrown overboard it was beached. However, after some difficulty two tugs pulled the stricken frigate into Valetta Harbour where new propellers were fitted.

Brian's chequered career was explored in such depth of detail it was possible to imagine him becoming seriously ill whilst taking some 'R and R' where it was customary for young sailors to be on shore. He was taken by HMS St Austell Bay to hospital in Trieste where he was nursed by a sister who disliked all naval personnel. He was made to sit to attention for the ward rounds in spite of a life threatening tropical virus which seriously affected his ability to breathe. He was rescued two weeks later when his own ship came to collect him. Do we have service like this still?

He was on board the ship which carried the Olympic flame from Greece to Corfu in 1948 as the Russian government would not allow access through Yugoslavia. He has found himself in such ground-breaking and history-making situations it is a wonder he has been able to keep it all to himself for so long.

We are assured there are many more tales to tell and I am sure he will be able to keep us amused for several meetings to come.

Robbie McCarthy
Hon Secretary



HEARTSTART

This meeting was well attended and appreciated by everyone there.

It is known that a number of interested residents were unable to attend and if you are one of them, please contact the Parish Council Clerk, Margaret Wood, 810265. It is possible that a second evening could be arranged



Tel 01548 810205

Mondays - closed

Tues - Sat Noon - 3.00pm

6.30pm - 11.00pm

Friday: Early Doors Club 6.00pm

Food: 12.30pm - 2.30pm & 6.30pm - 9.00pm

Sun Noon - 10.30pm

Food: 12.30pm - 2.30pm & 6.30pm - 9.00pm



NEIGHBOURHOOD WATCH

During the afternoon of 15th June the home of Mr and Mrs David Milne-Smith was entered by intruders. Entry was gained by breaking a window.

The intruders stole some items but thanks to prompt action by the Police, the intruders were apprehended and the stolen property was recovered.

David Young.

CREAM TEA

SEDGEWELL SANDS
Bigbury on Sea

Saturday
27th July
2.30pm - 4.00pm

£1.50

In aid of
Royal British Legion
Women's Section Charities

M and J P Builders

All types of building work
undertaken

New Buildings

Renovations

20 years experience
in Building Trade

For FREE Estimates and Advice
please phone
810633

If You Have
Something
You Wish
to
Advertise
call
810123



PRE-TEXT

Graphics Design / Artwork
Flyers/Posters/Leaflets/Advertisements
Overhead Folds - Design & Preparation
Logo Design
All aspects of Desk Top Publishing

GEOF DYKES, RINGMORE VEAN, RINGMORE, TQ7 4HL
TEL 810123

PHOTO EXPRESS - Modbury

Hours of opening

Monday 9.00am - 1.00pm
to &
Friday 2.30pm - 6.00pm
Saturday 9.00am - 1.00pm
2.30pm - 5.00pm

MODBURY PHARMACY

Tel: 830215

TILLY DOWNING B.Sc. Pod., M.Ch. S.

STATE REGISTERED CHIROPODIST

*Surgery or Home Visit
Three Years Training
Safe & Thorough*

The Laurels, Fore Street, Aveton Gifford

Tel: 01548 550072

Opposite the Memorial Hall Car Park

BIGBURY SHOP & POST OFFICE

Daily Deliveries - No order too small - Just give us a ring

Bread + Fruit & Veg + Milk & Dairy Products
Newspapers & Magazines

Best Back Bacon + Ham + Tongue + Cheese
any amount cut

SHOP
Daily 8.00am - 4.00pm
Sunday 9.00am - 1.00pm
01548 810213

Aune Valley Meat
Calor Gas & Coal
John & Margaret Inman

POST OFFICE
9.00am - 1.00pm
Monday to Friday
01548 810213

Julie 
Fully Qualified
Mobile Hair-stylist

Ladies & Gents
Competitive Prices
Ansaphone available

Bigbury-on-Sea
810634

ADVERTISING SPACE IS ALWAYS AVAILABLE

THIS AREA FOR £1 PER MONTH

810123

HIRAM BOWDEN



Repairs
Servicing
MOT

Cars collected & returned
Tel: 550129
Evening 01752 896065



Jinny McCabe Wedding Florist

Bouquets

Church & Marquee
Decoration

Windwood Farm
Ringmore
Kingsbridge, TQ7 4HJ
Tel: 01548 810538

Kevin Light

PLUMBING & HEATING
CORGI & A.C.O.P. Reg.

Wychbury
Ringmore Drive
Bigbury on Sea

Tel 01548 810726
Mobile 07721 955506

FOR 'REAL' CHEESE & WINE

MACKGILLS

* Handcut Farmhouse English & Continental Cheese

* Home-cooked Ham & Salamis

* Home-cooked Pies & Cakes etc.

* Wine, Beer, Sherry & Cider
and much more

Telephone Enquiries Welcome



4 Church Street, Modbury, Devon PL21 0QW
Telephone: Modbury (01548) 830860

RINGMORE PARISH COUNCIL

Meeting: Tuesday 19th June
Present : 6 Councillors, the Clerk.
Neighbourhood Watch: David Young;
Millenium Committee: Guy Eddy; one
other member of the public.

Casual Vacancy: as no one had submitted their name for nomination, the council decided to continue, for the time being, without filling the vacancy.

Matters Arising:

Defibrillator - the meeting of 18th June was well attended but as a number of people were unable to be present, an attempt will be made to arrange another evening.

Drainage - the work of the past few months has not been severely tested. The matter will be monitored.

Queen's Golden Jubilee - Cllr Tagent passed on a suggestion from the PCC for a village celebration. Cllr Dykes will ask the Parish Room Committee to consider organising the event.

Bus Shelter - The Council decided that channels in front of the shelter would divert water from the inside. It was agreed to approach the Highways Dept to seek help in completing the work.

Matters Raised by Parishioners

David Young (NW) reported a break-in at High Reach. All property stolen was recovered.

Guy Eddy (Millennium Cttee) said that he was hoping to visit the sites where trees had been planted but he was still restricted by F&M closures. He hoped that next month he would be able to report on the status of the Church Clock project.

Barry Old expressed concerns about the application to extend Melika, Cackle Lane and asked that landscaping should be included in any permission granted.

District Council

Bryan Carson described the organisation of the SHDC and reported that he was now on the Development Control Board (Planning), Community Board (Housing, Agenda 21, Community strategies and safety) and the Business Board (Leisure, Car Parks and Markets). Other Boards are: Prosperity (Economy), Environment, Scrutiny Board which can review the decisions of all the boards and the Executive which comprises the chairmen of all the boards and acts like a Board of Directors, setting overall policies and strategies of the council.

Footpaths

These are gradually re-opening and will need walking to wear down the growth which has occurred during the period of closure. There has been a significant cliff fall between Ayrmer and Westcombe as well as large rock falls on the right-hand

side of Ayrmer Cove as one looks out to sea. Cracks have also appeared near the path between Ayrmer and Challaborough.

Planning

Melika, Cackle Lane. An application has been made which would double the size of the existing property. The council has no objection in principle, but expressed its concern regarding the size of the extension on such a prominent site. It asked for landscaping to be included in any permission granted.

Any Other Business

The council minuted its gratitude to Carol Allan for her diligent work whilst on the Council and the Chairman will write a letter expressing the Council's thanks.

Next Meeting

Tuesday 24th July at 7.00pm in the WI Hall
Geof Dykes

SURVIVORS

(For those born before 1940)

We were born before television was affordable, before penicillin, polio shots, frozen foods, Xerox, plastic, contact lenses, videos, Frisbees and the Pill.

We arrived before radar, credit cards, split atoms, laser beams and the ball point pen; before dishwashers, tumble dryers, electric blankets, air conditioners, drip dry clothes and before men walked on the moon.

We got married first and then lived together (how quaint can you be?). We thought "Fast Food" was what you ate in Lent, a "Big Mac" was an oversized raincoat and crumpet we had for tea. We existed before "house husbands", computer dating, dual careers, and when a "meaningful relationship" meant getting along with cousins, and "sheltered accommodation" was where you waited for a bus. A bus, for those who don't know, is a

We were before day care centres, group homes and disposable nappies. We never heard of FM radio, transistors, tape decks, mobile phones, artificial hearts, word processors, yoghurt, and young men wearing earrings. For us time sharing meant togetherness, a chip was a piece of wood or fried potato, hardware was nuts and bolts and software was not a word.

Before 1940 "Made in Japan" meant junk, the term making out referred to how you did in your exams, "stud" was something that fastened a collar to a shirt and "going all the way" meant staying on the bus all the way to the depot. Pizzas, McDonalds and instant coffee were unheard of. In our

TEN YEARS AGO . . .

There were continuing problems caused by large caravans being transported through the village to Challaborough. A viewing committee accepted the points of the Parish Council and arranged to talk to the then owners of the Caravan Park.

The Post Office was celebrating the first year after being re-opened.

There were warnings about Giant Hogweed, similar to the caveats being given this year.

The Journey's End was still without a landlord but seemed to be operating without undue difficulty.

RINGMORE WOMENS' INSTITUTE ANNUAL SUMMER FAYRE

Wednesday 1st August

2.00pm

WI Hall & Garden

Stalls
Raffles
Competitions
Refreshments

Admission 50p

For more information please call Pat King 890359

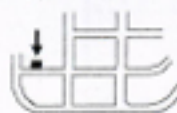
day, cigarette smoking was fashionable, "grass" was mown, coke was kept in the coal house, a joint was a piece of meat you had on Sundays, pot was something you cooked in and 'spaced out' meant placed so that there was room to move about. "Rock music" was a Grandmothers lullaby, Eldorado was an ice cream, a gay person was the life and soul of the party and nothing more, while aids just meant beauty treatments or help for someone in trouble whilst jets were on the end of a hosepipe and jumbos were elephants.

We who were born before 1940 must be a hardy bunch when you think of the ways in which the world has changed and the adjustments we have had to make. No wonder we are so confused and there is a generation gap today but, by the grace of God we have survived! Alleluia!

The 61 Club
Thanks to Frank Williams for passing this on don't take it too seriously!

POST OFFICE STORES

Daily Deliveries Bigbury-on-Sea 810274
POST OFFICE - GROCERIES - BREAD - DRY CLEANING
CONFECTIONERY - PHOTOCOPIING - STATIONERY - VIDEOS
NEWSPAPERS - MILK & CREAM - FRUIT & VEGETABLES
CREAM BY POST - FRESH LOCAL MEAT - WINES & SPIRITS



Car Park

Stores open: 9.00am - 5.00pm
Except Tuesday 9.00am - 1.00pm
Sunday 9.00am - Noon
Post Office open 9.00am - 1.00pm
Monday, Tuesday, Thursday, Friday

Mick & Carolyn Hunt

All orders promptly serviced & despatched Friendly & courteous service

NIGEL FROST

BS: (Hans)

Optometrist

FC Optom

Chene Court, Modbury
next to car park

01548 830944

Open Weekdays and Saturday Morning
Contact Lenses, Spectacles, Accessories
Complete Eye Examination

A M KING & SONS

Registered Builders

Internal & External Decorations

uPVC Windows & Fascias

Extensions/Conversions

New Kitchen
or Bathroom

810570



Residential Care Home
Prop: Gina & Gordon Phillips
KORNILOFF
Hotel for the Elderly

Overlooking Burgh Island
A Family-run Home NVQ trained staff

24 hour Care, Home cooking, Special diets catered for,
Stair Lift, Hairdresser, Chiropodist, Bath Hoist if needed
Large Single, Double or Twin rooms by choice. Some en-suite

Your Dignity and Privacy is paramount
Transport can be provided by arrangement
Devon County Council registered

Warren Road, Bigbury-on-Sea, Devon TQ7 4AZ
Telephone: 01548 810222



Canada Life

Canada Life Limited
Centre Court
73 Exeter Street
Plymouth
Devon
PL4 6JH

Tel: 01752 369922

475673

Fax: 01752 381379

Home: 01548 810222

For a discreet and confidential local service on
all financial matters that are important to you,
please feel free to contact me.

Mike Wynne-Powell

Senior Financial Consultant

Company Representative of The Canada Life Marketing Group in relation
to Life Assurance, Pensions, Unit Trusts and Unit Trust PSP's only.

The Canada Life Marketing Group consists of The Canada Life Insurance Company, The Canada Life Assurance Company
of Great Britain Limited, Canada Life Management (UK) Limited (regulated by FSB), Albany Life Assurance Company
Limited and Albany International Insurance Limited. All companies are regulated by the Financial Services Authority.

ADVERTISING SPACE IS ALWAYS AVAILABLE

This area for £1 per month

810123

Nicholas HAIR & BEAUTY

8 Church Street, Modbury
South Devon Tel: Modbury 830152
Ladies' & Men's Hairdressing & Beauty Salon

or at Marine Hotel, Salcombe, South Devon Tel: Salcombe 843370

DAY OF BEAUTY

A relaxing and recharging day pampering at the luxurious Marine Hotel;
including sauna, swim, solarium, spa bath, full body massage, full Sothys
facial. Light lunch in the hotel lounge or restaurant followed by manicure,

Rob Batten Car Sales



Quality cars to suit all pockets
My prices can't be matched

Phone for a chat
810680

THE BAKERY MODBURY

Bakers And Grocers
Farmhouse Bread
Hovis - Wholemeal



Take-away Snacks
Sandwiches

01548 830216

Easton House



If you need
additional
space for
family or
friends
call
Rob or Jo
on 810644

A weekend in the country



The Royal Oak Bigbury

Telephone: (01548) 810313



Enjoy good homemade food in our cosy bar area or sit in the lounge or restaurant areas and choose from either the bar menu or our a la carte specials board.

We provide only the best quality food - all freshly cooked on the premises and at reasonable prices.

Open for meals 7 days a week, lunchtimes and evenings

Choice of 3 real ales, all served direct from the cask.
Full range of keg lagers and bitters.

Refurbished en-suite accommodation.

Large car park and garden



JULY DIARY DATES

Wed 4th - R.B.L. Meeting - 7.30pm

Sat 7th - FUN RUN PRESENTATION
in The Memorial Hall - 7.30pm

WATCH OUT FOR DETAILS OF THE
BIGBURY B.B.Q. at The Royal Oak
IN EARLY AUGUST



OPENING HOURS AS FROM 1st JULY

MON - SAT: 12-11pm - FOOD SERVED: 12-2.30pm

& 6.30-9.30pm

SUN: 12-10.30pm - FOOD SERVED: 12-3pm & 7-9pm

50+ FITNESS
CLASSES
Bigbury Memorial Hall
£3.00 per class

Thursdays 10.30 - 11.30am

AQUA FITNESS
CLASSES

Burgh Island Causeway
Leisure Club £3.50 per class
Mondays: 3.30 - 4.15pm
Beginners & non-swimmers
Qualified Instructor

To discuss details or book a place
(numbers limited for AquaFit)
please telephone Jill Gubbins
01752 339902 - weekday evenings



WOMEN IN THE COMMUNITY

I find myself hard pressed to 'come to press' and describe our activities for June except, of course, for our involvement in the Church Flower Festival which occupied us at the end of May. It was an absorbing and rewarding experience for all members who took part. These occasions are great fun, bringing people together in a common cause.

But the disaster was the WI Barbecue, rained off in no uncertain way. However, it rose like the proverbial phoenix and was re-arranged for 28th June.

Our next meeting on 12th July, has Maureen Chapman, lady gardener, who will talk about 'Roses, Rhododendrons and Raspberries'; something for everyone there.

Naomi Warne

Kingsbridge

June SOLUTION

K	S	P	W	J
V	M	O	H	X
B	Y	T	E	D
F	A	L	I	R
Q	U	C	N	G

Perseverance was the key! The Beginners managed a word of at least 20 letters but it broke all of the rules. They did offer SMOTHERING as did Real Sleuth and New Dawn who deserves a bonus point for defining the latest cleaning aid as QUALITYMOPS; they are deserving but nevertheless unrewarded! ATMOSPHERIC marks go to The Furry Boys, Gemini and The Matchman, the latter finding almost a whole lexicon before reaching the heights. At the halfway stage Matchman is a short head in front of The Beginners with The Furry Boys, Real Sleuth and Gemini a similar distance behind in joint third place. As the ground gets heavier, it is bound to affect the placings.

July

Ally ouha veto dois sol veth ecros sword.
Shad eda rea shave be enfil ledwi thex
tracha ract erst he semus tall berem
ove dand theans werwil lap pear no wis
theti metoma kethemo veto cat chyo
urop po nent swhent heya relo okin gthe
ot herwa y.

T	S	R	E	F	A	D	E	D	P	L	I	G	H	T
E	L	E	V	A	T	O	R	I	A	E	N	R	O	I
A	O	S	A	U	H	G	I	S	T	A	D	I	U	M
S	W	E	L	L	O	A	N	O	H	D	I	P	S	E
E	N	R	U	T	L	T	O	L	E	R	A	T	E	S
L	E	V	E	L	L	E	R	V	T	O	S	E	F	E
L	S	E	D	E	N	S	E	E	I	M	P	A	L	E
O	S	E	E	S	A	W	T	I	C	E	A	L	Y	D
S	T	R	E	S	S	E	A	L	A	D	D	I	S	M
O	A	F	S	A	P	A	P	A	T	I	E	N	C	E
B	L	U	N	D	E	R	E	D	P	C	A	F	A	N
A	L	R	I	D	R	A	D	R	A	I	N	A	P	T
D	I	S	G	U	S	T	O	O	W	N	A	N	E	I
T	O	S	H	D	E	E	D	I	R	E	C	T	O	R
U	N	I	T	E	D	D	O	T	I	S	E	E	V	E

ITEMS from South Hams

Dog owners might be aware that they can have their dogs micro-chipped at the Kingsbridge Embankment Bandstand on 11th August from 11.00am - 4.00pm for only £10! There are other SH venues on other dates, in July, - call 01803 861126.

At 11.00am on 14th and 15th July you can catch a bus from Torcross and for £2.50 you can travel to Strete and back enjoying poetry from local poets. Take a picnic lunch and spend an inspiring 4½ during which you might write a line or two of your own. Details: 01803 861183