

RINGMORE

PARISH NEWSLETTER

MAY 2001

ISSUE NUMBER 189

EDITOR: GEOFF DYKES 810123

DEADLINE Fri 25th

THIS MONTH

MONDAYS: Short Mat Bowls Parish Room 7.30pm

TUESDAYS: Table Tennis Parish Room 7.30pm

WEDNESDAYS: Step Aerobics Parish Room 8.30pm

THURSDAYS: Quiz Night at Journey's End 9.00pm

- 3rd AGM Parish Room Committee 7.30pm Parish Room
- 5th Royal British Legion Trip to Buckfastleigh
- 6th Royal British Legion 7.30pm at Journey's End
- 9th Christian Aid Morning 10.30am Middle Manor
- 10th IPQ Wembury v Ringmore Plate Final 7.30pm at Ivybridge Community College
- 18th Charity Race Night at Journey's End
- 23rd Parish Council Meeting WI Hall 7.00pm
- 25th/28th Ringmore Flower Festival
- 25th/28th Whit Weekend of Jazz at the Journey's End

Mobile Library

Friday:- 11th & 25th

- Ringmore Church
12.05 - 12.30
- Challaborough
12.35 - 12.45
- St Ann's Chapel
3.15 - 3.30
- Kingston Fire Station
3.45 - 4.30

Rainfall - Fiona Batten



Last Month 5"

Average - last 10 years	-3"
High -2000	-7"
Low -1997	-1/2"

Please send items for inclusion in the Newsletter

to:

The Editor

Ringmore Parish Newsletter,

Ringmore Vean, Ringmore, TQ7 4HL

or put them in the letter box in the garage door

The Ringmore Inter-Parish Quiz Team has reached the final of the Ken West Plate in the Jubilee Year of the IPQ. On Wednesday 25th April the team contested first a Quarter-Final against Sparkwell and then a Semi-Final against Cornwood. Both matches were won comfortably but the Final will not be so easy. Our opponents, Wembury, have a good record so the team will need as much support as possible. The Final is on Thursday 10th May at 7.30pm at Ivybridge College.

At the end of May the Ringmore Flower Festival will be in full bloom. This is a new venture by the PCC which deserves support. Why not extend the colourful image around the village by perhaps, placing some tubs of flowers outside the gate for the duration of the festival or at least tidying neglected corners

Sandy Hammond from Chartilly is prepared to arrange a Course to enable us to learn how to cope with a medical emergency. Do not ignore this opportunity; basic skills could make all the difference!

Fitness Classes take place at the Memorial Hall, St Ann's Chapel and at the Burgh Island Causeway Leisure Club. You are invited to take part for a small fee. One day we shall all be a statistic but why not try to delay

The Annual Parish meeting has taken place. A well-attended meeting heard from Sir Simon Day (Devon County Councillor), Brian Carson (SH District Councillor) and Simon Garner (National Trust) who each gave a resumé of their activities during the past 12 months.

The annual Christian Aid Coffee Morning will take place at Middle Manor. Everyone is welcome to support this worthy cause. Finally, Thursday evening Quiz Night at the Journey's End will continue until the end of May.



Inter-Parish Quiz

Ken West Plate

FINAL

Wembury

v

Ringmore

7.30pm 10th May

Ivybridge Community College

M and J P Builders

All types of building work undertaken

New Buildings

Renovations

20 years experience
in Building Trade

For FREE Estimates and Advice
please phone
810633

Learn to Drive with Trev Drive In School of Motoring

Fully Qualified
Department of Transport
Approved Driving Instructor
Pass Plus Registered

Quality patient Tuition
Door-to-Door Service
Nervous Pupil Specialist

Discounts available for pre-paid bookings

£14 an hour
£130 for 10 hours
£240 for 20 hours

Telephone 01752 336454 (Daytime)
Telephone 01548 810715 (Evening)



PRE-TEXT

Graphics Design / Artwork
Flyers/Posters/Leaflets/Advertisements
Overhead Foils - Design & Preparation
Logo Design

All aspects of Desk Top Publishing

GEOF DYKES, RINGMORE VEAN, RINGMORE, TQ7 4HL
TEL 810123

PHOTO EXPRESS - Modbury

Hours of opening

Monday 9.00am - 1.00pm
to &
Friday 2.30pm - 6.00pm
Saturday 9.00am - 1.00pm
2.30pm - 5.00pm

MODBURY PHARMACY

Tel: 830215

TILLY DOWNING B.Sc. Pod., M.Ch. S.

STATE REGISTERED CHIROPODIST

Surgery or Home Visit
Three Years Training

Safe & Thorough

The Laurels, Fore Street, Aveton Gifford

Tel: 01548 550072

Opposite the Memorial Hall Car Park

BIGBURY SHOP & POST OFFICE

Daily Deliveries - No order too small - Just give us a ring

Bread + Fruit & Veg + Milk & Dairy Products

Newspapers & Magazines

Best Back Bacon + Ham + Tongue + Cheese

any amount cut

SHOP
Daily 8.00am - 4.00pm
Sunday 9.00am - 1.00pm
01548 810213

Aune Valley Meat
Color Gas & Coal
John & Margaret Inman

POST OFFICE
9.00am - 1.00pm
Monday to Friday
01548 810213

Julie
Fully Qualified
Mobile Hair-stylist



Ladies & Gents
Competitive Prices
Ansaphone available

Bigbury-on-Sea
810634

ADVERTISING SPACE IS ALWAYS AVAILABLE

THIS AREA FOR £1 PER MONTH

810123

HIRAM BOWDEN



Cars collected & returned
Tel: 550129
Evening 01752 896065



Jinny McCabe
Wedding Florist

Bouquets

Church & Marquee
Decoration

Windwood Farm
Ringmore
Kingsbridge, TQ7 4HL
Tel: 01548 810538

Kevin Light

PLUMBING & HEATING
CORGI & A.C.O.P. Reg.

Wychbury
Ringmore Drive
Bigbury on Sea

Tel 01548 810726
Mobile 07721 955506

FOR 'REAL' CHEESE & WINE

MACKGILLS

+ Handcut Farmhouse English & Continental Cheese

+ Home-cooked Ham & Salamis

+ Home-cooked Pies & Cakes etc.

+ Wine, Beer, Sherry & Cider . . .
and much more

Telephone Enquiries Welcome



4 Church Street, Modbury, Devon PL21 0QW
Telephone: Modbury (01548) 830860

News from All Hallows



PRAY FOR FARMERS AND LOCAL INDUSTRIES

Pray for farmers who have lost livestock, and are in despair; those running hotels, restaurants and other business which depend on visitors to the area; for right government decisions; for true compassion on all who are suffering at this time.

Christian Aid Week

Christian Aid week this year is a celebration of making a difference to people's lives. In Uganda, debt relief means that children can now go to primary school without having to pay fees. Tea-growing co-operatives in Brazil enable communities to benefit from fairly traded products. In Bangladesh, loans to small businesses help people improve their lives.

Although Christian Aid week is actually from May 13th to 19th, we shall be holding our customary fund-raising coffee morning the previous Wednesday, May 9th at 10.30 a.m. in Middle Manor, Ringmore, by kind permission of George Grimshaw. Entry (which includes refreshments) is 50p, and there will be stalls of plants, cake and preserves, bring and buy items, and a raffle.

You may feel the support you give is only a drop in the ocean, but together with everyone else, they make a real difference; last year Christian Aid raised a record £12 million. Previous years' coffee mornings have raised nearly £400, and we want this year to be equally successful. So book the date and come along!

Flower Festival

Ringmore Church's Flower Festival takes place over the Bank holiday weekend at the end of May. With the theme "Ringmore in Bloom" the event begins with a Gala Opening on Friday May 25th (tickets £5) and is open from 10 a.m. on Saturday, Sunday and Bank holiday Monday. Morning coffees, light lunches and cream teas will be served in the W.I. Hall, and the proceeds will go towards All Hallows' repairs. For details, ring 810520.

New Church Council

Last month's annual Vestry and Parochial Church Meetings heard reports of the work of the Church over the past year. The annual accounts were approved, and the Churchwardens and Parochial Church Councillors elected for the coming year. We pray for God's blessing on the Church Council as it seeks to reach out to everyone in the community with the Good News of Jesus Christ.

CHURCH SERVICES IN MAY

Sunday May 6th

9 a.m.	Kingston	Holy Communion & Children's Church
11 a.m.	Ringmore	Worship at Eleven
6 p.m.	Bigbury	Evening Prayer*

Sunday May 13th

9 a.m.	Ringmore	Holy Communion
11 a.m.	Bigbury	Worship at Eleven
6 p.m.	Kingston	Evening Prayer*

Sunday May 20th

9 a.m.	Bigbury	Holy Communion*
11 a.m.	Kingston	Worship at Eleven
6 p.m.	Ringmore	Evening Prayer*

Sunday May 27th

9 a.m.	Ringmore	Flower Festival Holy Communion*
11 a.m.	Bigbury	Communion at Eleven
6 p.m.	Kingston	Evening Prayer

*Book of Common Prayer services are marked **

RINGMORE PARISH COUNCIL

ANNUAL PARISH ASSEMBLY WEDNESDAY 18th APRIL

Present: All Parish Councillors, The Clerk, County Cllr. Sir Simon Day; Dist. Cllr. Brian Carson; Simon Garner of the National Trust; Guy Eddy, Millenium Committee and ten members of the public. Apologies received from David Young, Neighbourhood Watch.

Chairman's Report - Rob Batten gave a comprehensive report of the Council's activities during the past year. 12 monthly meetings had taken place, with only one planning application during the year to be considered. Renovations to the Town Well and surrounding area had been carried out, the problem of the compost heap at Crossways had been resolved and the council had played a part in securing a table tennis table enabling a new club to get underway. He reported that flooding, caused in the main by the very heavy rainfall and the adverse ploughing of nearby fields, had occupied much of the Council's time during the Winter. There had been only minor incidents of law breaking or vandalism, notably the theft from the church collection box and the recent problem with the WI notice board. George Grimshaw's cockerel went missing and was never found. He expressed a hope that all dog owners in the Parish would act responsibly during this difficult period of limited access to walks; dog fouling had been an issue raised at many meetings. He thanked Cllr Muller for all the hard work he had undertaken improving and maintaining the footpaths in and around the village and for instigating the successful application for funding for this work which will again be in the sum of £300 this year, saving the Council's resources.

Thanks were also given to Cllr. Dykes (and Mrs Dykes) for their unstinting work in producing the Ringmore Newsletter each month and to all those volunteers who deliver them. He closed by thanking the Clerk to the Council, Margaret Wood, for all her work and support during the year.

Sir Simon Day - Sir Simon outlined his role as County Councillor, reminding the meeting that Devon County Council represents 700,000 people and is the largest employer in the County. The County Council's element of Council Tax this year had increased by 7%. He discussed both his personal concerns and that of the Council over the Foot and Mouth epidemic and he was scheduled to attend a meeting the next day with farmers leaders and MAFF representatives on the issues particularly relating to Devon, where he felt the matter of vaccination would undoubtedly be discussed. Sir Simon advised that there is to be an increase of

police officers over the next two years and he is fighting hard to get an increase in the number for Devon. He advised that the South Hams district is the 8th safest in the country and second safest in the South West. He outlined the possible changes to local government should the Labour party be returned for another term of office. Although Conservatives are opposed, Labour is likely to introduce Regional Assemblies, which may mean the abolition of County Councils, but probable retention of District Councils. The future of Parish Councils under the new arrangement is also uncertain. Sir Simon touched on the issue of the 9000 new homes proposed for the area and confirmed his support for any development to be as near to Plymouth as possible with redevelopment of brown field sites and existing properties. A number of questions were then put from the floor covering the annexation of Plymouth and Torbay from the County Council, the status of the South Hams and the discharge of Nuclear Waste from Devonport Dockyard.

Brian Carson - Dist. Cllr. Carson advised that the District had been able to keep its element of Council Tax down to 2.8% this year. He gave a report on the proposed new political structure of the District Council and outlined his thoughts on the structure plan. Like Sir Simon he voiced his support for housing development in the main to take place nearer to Plymouth but expressed some support for modest local development to provide affordable houses for young people who want to stay in the area. The purchase of so many properties in the South Hams as second or holiday homes had inflated prices beyond the reach of most of those wanting to buy for the first time. The Foot & Mouth epidemic had occupied the District Council since the outbreak and they are looking for ways to help those businesses which have been most affected, particularly in the tourism industry. He was able to report on the success of the local Leisure Centres in the past year, and the great success of the newly introduced Farmers Markets, until the Foot and Mouth outbreak. Questions followed from members of the public, including why was the overflow car park at the market in Kingsbridge closed (due to Foot & Mouth, according to the signs) when there hadn't been a market there for 18 months and there wasn't going to be another, how you could prevent new houses, if built, from being sold as holiday homes and also what help the District Council could give to businesses in the tourist industry suffering from the effects of the Foot and Mouth crisis, but are too small to qualify for business rate relief.

Simon Garner - National Trust - Mr Garner thanked everyone for their understanding and tolerance during the

Foot and Mouth crisis. The epidemic has, he explained, meant they have not been near the valley or Ayrmer Cove since the outbreak. Representatives of the National Trust are sitting on councils at the highest levels with MAFF and the Environment Agency to try to get things re-opened, but he stressed that they have, above all, a duty to their farming tenants who may have stock in fields near footpaths. Work at Nodden Mill will start as soon as access is available again. There has, of course, been little management of the countryside with the particularly wet winter followed by the Foot and Mouth outbreak. One good thing from this has been the sighting of some unusual birds and wildlife, but if you spot anything you have to provide a picture to back up your claim. Once any decision has been made to open up a footpath a green OPEN sign will be displayed clearly but until then Mr Garner impressed upon everyone that the closed signs must be obeyed.

From the floor Mr Garner was asked why the bridleway from the village to Ayrmer Cove could not be opened as there is no stock in the fields. He advised the meeting that the farmer needs to turn out stock and has applied for a licence to move them here so there is no chance at this time that the restriction can be lifted on any of the paths within 10 metres of a stock field.

The Chairman thanked Sir Simon Day, Brian Carson, and Simon Garner and all those who attended the meeting.

Carol Allan

A DAY OUT?

The Eden Project is proving to be the Tourist Attraction of the moment, so much so that it is not having to advertise its presence! For your information, tickets can be bought at the Tourist Information Centre in Modbury. There is no discount but having tickets when you arrive will enable you to avoid queuing and gain 'fast track' entry.

Eden is repeating the offer of 'Passports' which will enable you to gain free entry on subsequent occasions, until 31st March 2002. Arrangements to obtain a Passport can be made when you are there. Passport photos can be obtained on site and on payment of an administrative fee of £3.00, the Passport will be posted within a few days.

Tickets for the National Marine Aquarium can also be bought at the TIC and similarly, buying in advance will enable you to achieve entry without queuing.

Geof Dykes

Journey's End Journal

April has come and gone and with it, Easter, and hopefully the worst of the weather.

Though footpaths and some beaches remain closed, the Easter holidays were enjoyably busy.

Park Bench Aristocrats played to a packed house on Good Friday; unfortunately GIN broke down on the following Friday and left several 'fans' disappointed by his non-appearance. The Fish Cuisine menu was thoroughly enjoyed by all who came and the Great Northern Beer Festival rounded off the month, accompanied by Wendy.

May sees a rather fuller calendar with two Bank Holidays and a school holiday week. We have music from Fiona, TQ7 and a Jazz weekend with Sweet 'n' Hot and guests.

Our second Curry Night of the year takes place and we are giving you another chance to sample our superb char-grilled steaks at a knockdown price.

Our charity fund-raising continues with a Race Night in aid of the Children's Adventure Farm for Sick, Disabled and Disadvantaged Children. Horses are just £2 each, with a prize for winning owners and jockeys. There will also be a Tote on the night, so please come along, give generously and enjoy all the fun of a 'Day at the Races'!

We look forward to seeing you in May.
Debbie and Grahame.

Monday Opening

will start on 28th May and we will be open 7 days a week throughout the Summer.

????

The origin of the word Quiz is obscure as are the answers to some questions posed on Thursday evenings. Afficionados will be pleased to know that the Quiz Evening will continue throughout May ending on 31st with the The Landlord's Quiz



Tel 01548 810205

Monday: Noon - 3.00pm 6.30pm - 11.00pm
but closed 2nd & 30th

Tues - Sat Noon - 3.00pm
6.30pm - 11.00pm

Friday: Early Doors Club 6.00pm

Food: 12.30pm - 2.30pm & 6.30pm - 9.00pm

Sun Noon - 10.30pm

Food: 12.30pm - 2.30pm & 6.30pm - 9.00pm

A Silly Thing Happened . . .

Alan McCarthy very kindly made an extremely smart new notice board for the gatepost outside the WI Hall. Within a few days of it being put up, the glass has been smashed, which I think must have happened sometime on Tuesday April 10th.

This seems a particularly silly and pointless thing to have done. If anyone has any ideas how we can prevent the same thing happening again, can you let me know.

Pat King.

Parish Room

Things have been quiet on this front for almost twelve months but that does not mean that nothing has been happening - far from it.

Progress is being made towards the granting of a Lease but it has taken an inordinate length of time to complete and we are still some way off signing any documents.

The Parochial Church Council and the Parish Room Committee are agreed on the final objective. However, they have been unable to agree the final detail of the Lease because it is not known what requirements will be placed on both bodies by the Diocesan Solicitors and the Charity Commission.

Once this is known we can move forward and it is then that decisions will have to be made. Do we make any changes? Should they be major or minor? Should we confine our ambitions merely to improvements to the interior? This is the future agenda of the Committee. If you have any ideas, now could be the time for you to become involved.

The AGM of the Parish Room takes place on Thursday 3rd May at 7.30pm in the Parish Room. Everyone is welcome.

Geof Dykes
Chairman PRC

The Journey's End in May

Excellent cuisine. All freshly prepared and cooked in our kitchens, no bought in dishes.

Speciality fish dishes, and the best (we believe) char-grill steaks in the area.

All local English meat.

Tel: 01548 810205

Good Selection of cask ales + Belgian Beers + Quality wines

Live Music with Fiona
on Friday 4th May

Our Ever Popular CURRY NIGHT
On Saturday 12th May
All You Can Eat For £7.95

Charity Race Night for Childrens
Adventure Farm Trust on Friday 18th May

TQ7
Live on Saturday 19th May

WHIT WEEKEND JAZZ

25th, 26th, 27th, & 28th May

Jazz theme all weekend

"Sweet'n'Hot" Live on Saturday
New Orleans Dbde/ Creole Food

Try Our Char-Grill Steaks
We Think They're The Best

So We Are Offering
Two 8oz Rump Steak Dinners
For just £9.95 Total
On Saturday 2nd June

COLLECTORS CHOICE

Antiques & Collectibles

Variety of antiques, valve radios, fountain pens, clocks. Extensive range of Art Deco items. Old and interesting items purchased

For that unusual gift
Pay us a visit

27 Church St., Modbury Tel 01548 831111



OPPOSITE
COUNTRY FINE FURNITURE

BARDEN'S GARAGE

BIGBURY

Proprietor: E Nicklen

Servicing
Mechanical Repairs
MOT Welding ~ Repairs
Bodywork ~ Accident Repairs
Breakdown
Accident recovery available

☎ 01548 810627 ☎
07887 610247 ☎

ADVERTISING SPACE IS ALWAYS AVAILABLE

This size for £1 per month
please ring

810123

SHEPPARDS

Chartered Accountants

Your Local Accountants

Call Ian or Yvonne Sheppard
on (01548) 810341 or (01752) 220333
fax (01752) 221742
www.sheppardsaccountants.co.uk

Free initial interview & Free Parking

1 Addison Road, North Hill
Plymouth PL4 8LL

Full Accountancy & Taxation Service



DOMESTIC TECHNICIAN

Jill

The Old Chapel, St Ann's Chapel
Tel: 01548 810715

Do you need a hand with
Cleaning, Shopping, etc?
Give me a call - I will do my best

Local, reliable, all-year-round service
Hourly or Weekly rates

DEVONSHIRE FINE ART

Antique Watercolours, Oil Paintings,
Drawings, Maps and Prints.

Local Watercolours & Prints.

Quality Picture Framing Service.

9 Church Street, Modbury,
Devon PL21 0QW
Telephone/Fax: (01548) 830872.



FARE DEALS TRAVEL SERVICES

For all your travel needs

01548 810869

email: ammfare@totalise.co.uk

From Acapulco to Zurich and all points between!

Flights Packages Tailor-made Ferries
Hotel Insurance etc

Travel Agent for AETA, 100000



HOLYWELL STORES

St Ann's Chapel (Opp: Pickwick Inn)

MONDAY to SATURDAY 7.30AM - 6.00PM
SUNDAY 8.00AM - 5.00PM

CASH MACHINE NOW AVAILABLE

Potatoes £4.50 a sack

2001 Seeds now in stock

801 Multi-Purpose Compost £3.99

Gro-Bags only 99p

Coconut Multi-Purpose Compost £3.59

Seed & Potting Compost £1.29

Peat - Bark £4.99

Organic Fertilizer £6.75

FREE DELIVERY SERVICE TO ALL AREAS

For more details please telephone 810308

The Royal British Legion

The June meeting at the RBL will be on 6th June at the Journey's End at 7.30 p.m. The speaker after the meeting will be Brian McCabe who will give a short talk entitled "Up Sliema Creek without a paddle - Part 2".

We are hoping to arrange a trip to Buckfastleigh on 5 June to take a ride on the South Devon Railway as far as Totnes and have lunch in Buckfastleigh, returning about 3pm.

If anyone is interested would they please contact me to let me have some idea of numbers.

Robbie McCarthy,
Hon Secretary 810738



Pure Horse Manure
60p per bag
Delivered
Wilbur 810707

Inter-Parish Quiz

So Ringmore has made it to a final! Unless someone knows otherwise, this is the first time that the village team has reached the last stages of the Inter-Parish Quiz and the Silver Jubilee year is an appropriate moment.

We played at Sparkwell in the Village Hall. The evening was organised to allow both the quarter-finals and the semi-finals to take place on the same night. Our Quiz Mistress was Angie Estyn-Jones from Diptford and the Scorer and Time Keeper were Lindsey and Bob Knight from Ermington.

The order of play is pre-determined by the order of the original draw so the first match was between Cornwood and Holbeton. However Cornwood, as far from Sparkwell as Bigbury is from Ringmore, were late so Ringmore went on first against Sparkwell. Did this quell the nerves? Something did! Round 1 on General Knowledge was followed by Radio & TV and before we knew it, we were 14-7 ahead. After that we did not look back. By Round 4 and questions on Central London we were leading 29-15. After Detective Thrillers

RINGMORE HISTORICAL SOCIETY

An extract from the Kingsbridge Gazette 6th April 1888
UP AND DOWN THE DEANERY
by the Dean Rural (Prebendary F.C.Hingeston-Randolph)

Our little Parish lies in the very bosom of Bigbury Bay; just in the midst, between its extreme headlands, Stoke Point, towards Plymouth, and Bolt Tail, looking towards the East. The cliff line is magnificent; tall, bold, rugged, and wonderfully varied in colour and outline. And we have three deeply-cut coombes and coves; Challaborough and Westcombe, East and West, and Aymer in the midst. Our soil is extremely good; what old Devonshire Writers used to call a fertile glebe. So that, altogether, ours is a favoured land; and it is no matter, therefore, for surprise, that we find evidence of its having attracted settlers at a very early date. Settlers always look out for pleasant places . . .

On the high ground, towards Modbury, some two miles from the Church (All Hallows), I have a detached piece of glebe (land owned by the Church), two large fields called Higher and Lower "Sevenstones". Four main roads meet here and the place is known as "Sevenstones Cross". A short mile westward (sic) is a considerable state, Langston, now broken into two, South-

Langston, in Ringmore, and Lower-Langston, in the Parish of Kingston. Between these points is a straight and level road, running along the ridge of the hill, and forming throughout its whole length, the boundary between the two Parishes, a fact which proves the road to be a very ancient "Way" indeed, for it must have been made before the two Parishes were formed, that is to say, before Saxon times. Of the "Stones" nothing remains to us but their names....

Coming into the domain of History we find that "Our Parish" was well "settled in Saxon Days; for we learn from Domesday Book that in the day on which Edward-the-Confessor was living and dead, it contained two Manors - Reimore" (as Ringmore was written then) and "Ochenberie" - a name but little changed in form, and not different in form from our modern "Okenbury". Judhel de Totenais was the great Landowner, or "Capital Lord" then, and of him "Radulfus" (also written Randulphus i.e. Randolph or Ralph), held both the Manors.

Di Collinson

and Sport the score was 44-21. A Round on Car Names did not halt us and following a final round on General Knowledge we had extended our lead to win by 57-31.

In the other quarter-final, Holbeton lead Cornwood 14-11 by the end of Round 2 but they could not maintain their superiority. Cornwood profited from Crossword Clues and Film Stars and lead 27-16 at the half-way stage. Medical topics, Literature, Modern Music and Pot Luck served only to allow Cornwood to extend their winning margin to 51-33.

The semi-final between Cornwood and Ringmore started cautiously and by the end of Round 2 the score was a modest 10-10. However after questions on the Earth and General Knowledge, Ringmore had established a lead 25-16. Things can change very quickly in these matches but we managed to retain our advantage through Literary England, Man Made material, a journey through France and a final round of Pot Luck. The score difference remained the same and we won 47-38.

The final, on 10th May, will be at the Ivybridge Community College at 7.30pm against Wembury. This will be a very close match and the team will welcome as much support as possible. See you there!

Geof Dykes

CHRISTIAN AID

Making a difference to people's lives



MIDDLE MANOR

Ringmore

by kind permission of George Grimshaw
Wednesday 9th May at 10.30am

Plant Stall,
Cakes and Preserves,
Bring & Buy - Raffle

Contributions for any of the stalls will be much appreciated and can be brought on the morning from 10.00am onwards

Entry 50p, including refreshments

PLANTS for SALE

Despite excellent sales at the WI Easter Fair, I still have bedding-out Plants for sale including Busy Lizzies, Geraniums, Nicotianas and Mesembryanthemums.

Pop in and have a look - proceeds are for the WI disabled access.

Jackie Tagent
Challaborough Cottage (810520)

POST OFFICE STORES

Daily Deliveries Bigbury-on-Sea 810274

POST OFFICE - GROCERIES - BREAD - DRY CLEANING
CONFECTIONERY - PHOTOCOPYING - STATIONERY - VIDEOS
NEWSPAPERS - MILK & CREAM - FRUIT & VEGETABLES
CREAM BY POST - FRESH LOCAL MEAT - WINES & SPIRITS

Stores open: 9.00am - 5.00pm
Except: Tuesday 9.00am - 1.00pm
Sunday 9.00am - Noon

Post Office open 9.00am - 1.00pm
Monday, Tuesday, Thursday, Friday



Car Park

Mick & Carolyn Hunt

All orders promptly serviced & despatched Friendly & courteous service

NIGEL FROST

BS: (Hmg)

Optometrist

FC Optom

Chene Court, Modbury
next to car park

01548 830944

Open Weekdays and Saturday Morning

Contact Lenses, Spectacles, Accessories
Complete Eye Examination

A M KING & SONS

Registered Builders

Internal & External Decorations

uPVC Windows & Fascias

Extensions/Conversions

New Kitchen
or Bathroom

810570



ADVERTISING SPACE

IS ALWAYS AVAILABLE

This area for £1 per month

810123

Nicholas HAIR & BEAUTY

8 Church Street, Modbury
South Devon Tel: Modbury 830152
Ladies' & Men's Hairdressing & Beauty Salon

or at Marine Hotel, Salcombe, South Devon Tel: Salcombe 843370

DAY OF BEAUTY

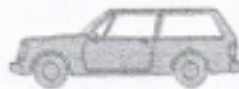
A relaxing and recharging day pampering at the luxurious Marine Hotel, including sauna, swim, solarium, spa bath, full body massage, full Sothys facial. Light lunch in the hotel lounge or restaurant followed by manicure.

Rob Batten Car Sales



Quality cars to suit all pockets
My prices can't be matched

Phone for a chat
810680



KORNILOFF

Prop: Gina & Gordon Phillips

Overlooking Burgh Island

A Family-run Home NVQ trained staff

24 hour Care, Home cooking, Special diets catered for,
Stair Lift, Hairdresser, Chiropodist, Bath Hoist if needed
Large Single, Double or Twin rooms by choice. Some en-suite

Your Dignity and Privacy is paramount
Transport can be provided by arrangement
Devon County Council registered

Warren Road, Bigbury-on-Sea, Devon TQ7 4AZ
Telephone: 01548 810222



Canada Life

Canada Life Limited
Centre Court
73 Exeter Street
Ayr South
Devon
PA 0AH

Tel: 01752 269922
475470
Fax: 01752 281379
Home: 01548 810457

For a discreet and confidential local service on
all financial matters that are important to you,
please feel free to contact me.

Mike Wynne-Powell

Senior Financial Consultant

Company Representative of The Canada Life Marketing Group in relation
to Life Assurance, Pensions, Unit Trusts and Unit Trust FEP's only.

The Canada Life Marketing Group consists of The Canada Life Assurance Company, The Canada Life Investment Company
of Great Britain Limited, Canada Life Management (UK) Limited (regulated by the FSA), Albany Life Assurance Company
Limited and Albany Investment Assurance Limited. All companies are regulated by the Financial Services Authority.

Wedding Bouquets
Funeral Tributes



"Rosemary"



Flowers
for
all occasions

1 Broad Street
Modbury
Tel 01548 830048

THE BAKERY MODBURY

Bakers And Grocers
Farmhouse Bread
Hovis - Wholemeal



Take-away Snacks
Sandwiches

01548 830216

Easton House

Friday or Saturday

From 7.00 pm
Sunday
From 11.00am

Wine

Relax with an
Apertif
in the Bar



Dine

Enjoy Food
and Wine from
our wide Selection

Licensed Restaurant

Reservations only 810644

RINGMORE PARISH COUNCIL

Meeting: Tuesday 20th March

Present : 8 Councillors, the Clerk.
Millennium Cttee: Guy Eddy,
Neighbourhood Watch: David Young and
one other member of the public. Apologies:
Cllr Tagent and Dist: Cllr B Carson; one
other member of the public.

Matters Arising:

Crossways : The offending pile of compost
has at last been removed.

Defibrillator : It is hoped that a meeting
to provide a demonstration and further
discussion on this matter will be arranged.

Village drainage/flooding: Drains at the
roadside have been kept clear but flooding
was experienced at Cumberland Cottages
during the month. It has been confirmed
that clearance of any sediment tanks is the
responsibility of the landowners where they
are sited. If they are not kept clear and are
thought to be contributing to the problems
of flooding the council will write to the
landowners concerned. The road
subsidence outside Trewarne has been
put right but water still continues to flow
from the BT manhole, Councillors are
putting pressure on BT to sort this out.

Radio Active Waste: The Council had
received for approval a copy of the very
lengthy, technical and complicated
application by DML concerning their
proposed increase of nuclear waste
disposal, both into the River Tamar and by
transportation across land for dumping at
approved sites, following their award of
the contract to refit the nuclear submarine
fleet. During a lengthy discussion it was
felt that the Council could not give its
approval, feeling unqualified to do so. It
was felt that any consultation process
should have taken place before contracts
were applied for. Although the proposed
levels of discharge fall well within the
safety limits laid down, support was
expressed for those living nearer the
DML site who feel vulnerable. A reply to
this effect will be submitted.

Queen's Golden Jubilee: In the absence
of Cllr Tagent who had raised the matter at
the last council meeting this was deferred
to the next meeting.

Bus Shelter: Cllrs Muller and Freeman
had measured up and felt that it was not
practical to raise the level of the
floor to ease the problem of flooding. As
an alternative the gully in front of the
shelter will be deepened and covered with
a metal grid. In the first instance Devon
Highways will be asked to fund.

Neighbourhood Watch: David Young
reported that the glass in the new WI
notice board had been accidentally broken
or vandalised. It is hoped that it was the
former. It has already been repaired.

Matters Raised by Parishioners: Skip.
The Council will provide a skip on Saturday
12th May. Graham & Debbie will be asked

if they will permit it to be sited in the
Journeys End car park as usual. Town
Well - dog fouling is causing a problem
both to the contractor who strims and to
children playing in the area. With so few
areas open to dogwalkers the problems
are understood, but please remember it is
still an offence, so scoop the poop!

Footpaths: Cllr Muller confirmed that
Darkie Lane is classed as an Urban
footpath and so it is in order for it to be
open. No other footpaths in our parish
have been opened but for information, the
path from Challaborough to Bigbury on
Sea has.

**Council Representative on Parish Room
Cttee**: Cllr Tagent is to be asked if she is
prepared to continue.

Next Meeting: Please note this will take
place on Wednesday 23rd May 7 p.m.
W.I. Hall when the Chairman/Vice
Chairman for the coming year will be
elected.

Carol Allan

Thank You

Guy and Myra Eddy would like to thank
everyone for their kind wishes, cards and
gifts on the occasion of their 55th wedding
anniversary. Also, a special 'Thank You'
to Grahame and Debbie for providing such
a splendid buffet.

STOP

Listen to your



What if your spouse, partner, parent,
child, grandchild... someone
has just collapsed in a heap
in your sitting room.

WHAT DO YOU DO NEXT?
Call an ambulance and then?

If you don't know the answer
the one you love could be as good as
dead in a matter of 4 minutes.

Whether you are 8 or 98,
you can learn what to do with
HEARTSTART

Think of a loved one;
think of saving a life; think
HEARTSTART

Come along for 2 hours,
it's free, it's easy, it's fun,
it might save a life.

Phone Sandy Hammond
on 810572 for details.

TEN YEARS AGO . . .

The Parish Council elected in May '91
comprised Ardene Bennett, John Borne,
Guy Eddy, Brian McCabe, Thelma Mann,
John Tate and . . . Rob Batten.

Large vehicles, ie caravans bound for
Challaborough were causing mayhem in
the village.

The Ash beat the Oak in '91. *This year the
Oak appears to be ahead by a leaf or two.*

RINGMORE in BLOOM

25th - 28th May

Flower Festival Ringmore Church

Friday 25th at 7.30pm

Gala Opening with
wine and music

Tickets: £5

Challaborough Cottage 810520

Saturday/Sunday 26th/27th

Open 10.00am - 8.00pm

"Songs of Summer Praise"

Sunday at 7.00pm

Monday 28th

Open 10.00am - 5.30pm

Coffee, Lunches and Cream Teas
served in the WI Hall

Ringmore in Bloom

It is planned to set up a stall in the marquee
at the flower festival and we would be very
grateful for donations of various items on
a floral theme which our visitors might
wish to purchase, such as:

Plants and flower pots
Gardens, plants and gardening
second handbooks
Floral gifts — lavender bags etc
Floral bric a brac in good condition

If you wish to donate your items now,
please deliver them to me, or leave them in
the Church vestry or Parish Room for me
to collect.

It would also be appreciated if anyone
could spare an hour to manage the stall on
a rota basis throughout the three days
between the hours of 10.00am and 5.00pm.
Please would you contact me on 810341.

Many thanks.

Yvonne Sheppard



The Royal Oak Bigbury

Telephone: (01548) 810313



THE OAKS STAKES



Horse racing at The Royal Oak on Saturday 12th May
Come and have a fun filled evening and help raise
funds for the BIGBURY FUN RUN.

Sponsor a race for £10 or a horse for £2. Prizes for the
winning sponsors. Pick out the winner if you can! Help
us to make this a good start to this year's fund raising efforts



SPRING SPECIALS

Tue 8th - Thu 10th, Mon 14th - Thu 17th,
Mon 21st - Thu 24th May inclusive



RIB EYE STEAK, GAMMON STEAK, CHICKEN GOUJONS,
BATTERED COD, LASAGNE & VEGGIE KIEV
ALL AT £4.95 - available lunch times and evenings

MAY DIARY DATES

Wed 2nd - R.B.L. Meeting - 7.30pm

Thu 3rd - Birthday Party - 'Bronco' - Live music with
Wendy - 8.30pm

Fri 11th - Auction Night - 8.30pm

Sat 12th - Horse Racing Evening - 8.00pm

Fri 25th - Celebrate our first year's anniversary at
The Royal Oak - Live music - 8.00pm



50+ FITNESS CLASSES



Bigbury Memorial Hall
£3.00 per class

Thursdays 10.30 - 11.30am

AQUA FITNESS CLASSES

Burgh Island Causeway
Leisure Club £3.50 per class

Mondays: 3.30 - 4.15pm
Beginners & non-swimmers
Qualified Instructor

To discuss details or book a place
(numbers limited for AquaFit)
please telephone Jill Gubbins
01752 339902 - weekday evenings



WOMEN IN THE COMMUNITY

The April meeting produced an unexpected
treat in the form of a talk by Stuart Fraser who
is now the manager of the Garden House at
Buckland Monachorum. Members were
expecting Mr Fraser to talk about his
experiences in journalism, as, in an earlier
incarnation, he had been a journalist! But
frankly, when we saw the beauty of this
extraordinary garden in the lovely slides
shown, I think we enjoyed this far more!
Many members decided at once to visit the
Garden House as soon as possible, so great
interest was generated.

Several members will be attending the annual
Home Economics lunch at Hope Cove in
early May, which is always a very popular
event.

The WI will be involved in the forthcoming
Flower Festival at Ringmore All Hallows
Church at the end of May.

Naomi Warne

Enigma

April SOLUTION



Six entries this month. The Beginners,
The Furry Boys, Matchman, Gemini
(thank you for the Easter greetings) and
Real Sleuth who is obviously disgruntled
by last month's puzzle. Three points are
awarded to all of you. Alas, Taurus'
thoughtfully prepared answer had one
error - EPEE is entered on the grid in an
anti-clockwise direction - and because
of their past high standard, they will not
expect any favours, so none will be
given - two points only! Su Da Nim
appears to have returned to his/her
origins while Sue Brickay and New Dawn
must be otherwise engaged.

May

Each grid contains the letters of eight 8-letter
words. Each word in Grid One has a synonym
in Grid Two. The letters for each pair are in
identical positions in each grid (see your starter
for none), are used only once and are in order
running down the grid, left to right. The clues
for each pair of synonyms are in random order.
CLUES:

Meekness, Fanciful, Specific, Gripping,
Gracious, Conspire, Slipshod, Protract

EG. Clue: MEEKNESS

Answers: DOCILITY & MILDNESS

Now it is up to you to find the other seven pairs.

