

RINGMORE

PARISH NEWSLETTER

APRIL 2001

ISSUE NUMBER 188

EDITOR: GEOFF DYKES 810123

DEADLINE Wed 25th

THIS MONTH

MONDAYS: Short Mat Bowls Parish Room 7.30pm

TUESDAYS: Table Tennis Parish Room 7.30pm

WEDNESDAYS: Step Aerobics Parish Room 8.30pm

THURSDAYS: Quiz Night at Journey's End 9.00pm

2nd SHPolice Liaison Mtg Modbury Memorial Hall 7.30pm

4th Royal British Legion Journey's End 7.30pm

15th Easter Sunday Lunch at the JE

16th Easter Fair 2.00pm WI Hall

17th Parish Council Meeting 7.00pm WI Hall

18th Annual Parish Meeting 7.30pm WI Hall

21st British Fish Dinner at the JE

25th Inter-Parish Quiz at Sparkwell 7.30pm

RHS Meeting 'Mermaids' WI Hall 7.30pm

May

2nd Royal British Legion Royal Oak Bigbury 7.30pm

Mobile Library

Friday:- 27th only

Ringmore Church

12.05 - 12.30

Challaborough

12.35 - 12.45

St Ann's Chapel

3.15 - 3.30

Kingston Fire Station

3.45 - 4.30

Rainfall - Fiona Batten



Last Month **5½"**

Average	- last 10 years	- 5"
High	- 1992	- 8½"
Low	- 1991 & 99	- 2½"

Please send items for inclusion in the Newsletter to:

The Editor

Ringmore Parish Newsletter,

Ringmore Veau, Ringmore, TQ7 4HL

or put them in the letter box in the garage door

BEACH CLEAN

The annual spring clean of Ayrmer Cove had been pencilled-in for this month. Obviously, as we cannot legally reach the beach, other than from the seaward side (now there's a thought!), the activity has been deferred sine die. Whenever the time is right volunteers will be canvassed either by word of mouth or through the Newsletter

It had been hoped to complete it for Easter; the next target is the May Bank Holiday and then the late Spring Bank Holiday.

The peril of Foot & Mouth creeps inexorably closer. This is the time of year when the South Hams is full of Spring, Spring Flowers and Spring Visitors. This year the latter will be few. Ministers continually state that 'the countryside is open' but even that spin does not hide the fact that visitors to rural areas come to walk paths and moorland not metalled roads. The consequences are far-reaching and Green Wellie days show support for farmers; 'flip flop' days and 'shopping bag' days might yet be required. It is disasters such as at present which undermine hitherto sound businesses and Modbury could lose a shop or two in the crisis which would be detrimental to the area. Fingers crossed.

Some people have been seen walking the Footpaths in defiance of the closure notices. Everyone has their own threshold relating to what or who they would report to the authorities and each must make a judgement. 'I don't suppose it will matter; it's only one person'. What if that one person is carrying the disease?

Meantime life goes on. The WI are planning an Easter Fair in their hall on Easter Monday. The Historical Society has arranged a talk on Mermaids, towards the end of the month. This clashes unfortunately with the semi-finals of the Inter-Parish Quiz Plate Competition which will be held in Sparkwell Village Hall. Supporters are always welcome on these evenings so if Mermaids are not your fantasy here is an alternative.. We must hope that we will not be asked to keep away.

Now is the time to prepare for Ringmore in Bloom at the end of May. Let's produce a show worthy of a photograph at least!

For those of you who are unaware, which cannot be many, Sir Douglas Hall continues to recover. He is home, walking with a frame and growing stronger by the day.

COLLECTORS CHOICE

Antiques & Collectibles

Variety of antiques, valve radios, fountain pens, clocks. Extensive range of Art Deco items. Old and interesting items purchased

For that unusual gift
Pay us a visit

27 Church St., Modbury Tel 01548 831111



OPPOSITE
COUNTRY FINE FURNITURE

BARDEN'S GARAGE

BIGBURY

Proprietor: E Nicklen

Servicing
Mechanical Repairs
MOT Welding ~ Repairs
Bodywork ~ Accident Repairs
Breakdown
Accident recovery available

☎ 01548 810627 ☎
07887 610247

ADVERTISING SPACE IS ALWAYS AVAILABLE

This size for £1 per month please ring

810123

SHEPPARDS

Chartered Accountants

Your Local Accountants

Call Ian or Yvonne Sheppard
on (01548) 810341 or (01752) 220333
fax (01752) 221742
www.sheppardsaccountants.co.uk

Free initial interview & Free Parking

1 Addison Road, North Hill
Plymouth PL4 8LL

Full Accountancy & Taxation Service



DOMESTIC TECHNICIAN

Jill

The Old Chapel, St Ann's Chapel
Tel: 01548 810715

Do you need a hand with
Cleaning, Shopping, etc?
Give me a call - I will do my best

Local, reliable, all-year-round service
Hourly or Weekly rates

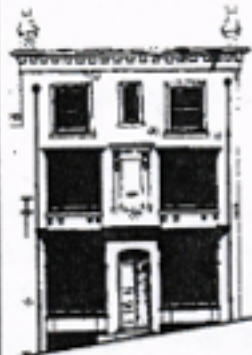
DEVONSHIRE FINE ART

Antique Watercolours, Oil Paintings,
Drawings, Maps and Prints.

Local Watercolours & Prints.

Quality Picture Framing Service.

9 Church Street, Modbury,
Devon PL21 0QW
Telephone/Fax: (01548) 830872.



FARE DEALS TRAVEL SERVICES

For all your travel needs

01548 810869

email: ammfare@totalise.co.uk

From Acapulco to Zurich and all points between!

Flights Packages Tailor-made Ferries
Hotel Insurance etc



Special Agent for AFCL 1000000

HOLYWELL STORES

St Ann's Chapel (Opp: Pickwick Inn)

MONDAY to SATURDAY 7.30AM - 6.00PM
SUNDAY 8.00AM - 5.00PM

CASH MACHINE NOW AVAILABLE

Potatoes £4.50 a sack

2001 Seeds now in stock

801 Multi-Purpose Compost £3.99

Gro-Bags only 99p

Coconut Multi-Purpose Compost £3.59

Seed & Potting Compost £1.29

Peat - Bark £4.99

Organic Fertilizer £6.75

FREE DELIVERY SERVICE TO ALL AREAS

For more details please telephone 810308

News from All Hallows



EASTER SERVICES

Maundy Thursday: April 12th
7.30 p.m. Ringmore: Holy Communion

Good Friday: April 13th
10.30 a.m. Kingston: Family Service
2 p.m. Bigbury: "At the heart of things"

Easter Day: April 15th
9 a.m. Bigbury: Easter Communion
(Book of Common Prayer service)
11 a.m. Kingston: Easter Communion
6 p.m. Ringmore: Easter Praise

"Press Release"

THE EASTER STORY: FACT OR FANTASY?

Ministers at All Hallows will this Easter challenge the prevailing assumption that Easter is only about chocolate eggs and fluffy bunnies, rather than the historic fact of a divine Jesus Christ being raised physically from the dead.

In their sermons, they will look at a number of key elements of the Easter story to see whether they could be true. These include:

- Was Jesus actually crucified and buried, or did he survive and escape?
- Was the tomb empty? Couldn't the body have been stolen?
- Was the story made up by Jesus' followers?
- Most importantly, did Jesus truly rise from the dead and ascend into heaven, as the Bible states unequivocally?

A spokesman comments: "Our so-called rational age has by and large tried to dismiss Easter as an unreliable ancient myth. We need to look carefully at the evidence and decide not only whether the Gospel accounts of Jesus are credible, but also whether he was who he claimed to be – the Son of God himself.

The baby born in Bethlehem did ultimately die on a cross in Jerusalem. In doing so, he paid the price we deserve for all the things we have done wrong."

Lent Series

The final meeting takes place on April 4th in Kingston Church, from 7.30 to 9.15 p.m. Come and join us.

CHURCH AGM DATE

The Annual Vestry and Parochial Church Meetings, which elect churchwardens and PCC members, will be held in Ringmore Parish Room on Thursday April 19th, starting at 7.30 p.m.

NEW MINISTER

By the time this news letter is published, we may know who is to be the new Resident Minister for Bigbury, Kingston and Ringmore. Interviews took place on Friday March 23rd; please pray for the person who is appointed.

PRAY FOR FARMERS

Pray for those who have lost livestock, and are in despair; those in fear of the spread of foot and mouth disease; for right government decisions; for true compassion on all who are suffering

CHURCH SERVICES IN APRIL

Sunday April 1st

9 a.m.	Kingston	Holy Communion and Children's Church
11 a.m.	Ringmore	Worship at Eleven
6 p.m.	Bigbury	Evening Prayer*

Sunday April 8th: Palm Sunday

9 a.m.	Ringmore	Holy Communion
11 a.m.	Bigbury	Worship at Eleven
6 p.m.	Kingston	Evening Prayer*

Sunday April 15th: Easter Day

Details in box at the top of the page

Sunday April 22nd

9 a.m.	Ringmore	Holy Communion*
11 a.m.	Bigbury	Communion at Eleven
6 p.m.	Kingston	Evening Prayer

Sunday April 29th

10.30 a.m.	Bigbury	Team Holy Communion
------------	---------	---------------------

(Book of Common Prayer services marked *)

M and J P Builders

All types of building work undertaken

New Buildings

Renovations

20 years experience
in Building Trade

For FREE Estimates and Advice
please phone
810633

Learn to Drive with Trev Drive In School of Motoring

Fully Qualified
Department of Transport
Approved Driving Instructor
Pass Plus Registered

Quality patient Tuition
Door-to-Door Service
Nervous Pupil Specialist

Discounts available for pre-paid bookings

£14 an hour
£130 for 10 hours
£240 for 20 hours

Telephone 01752 336464 (Daytime)
Telephone 01548 810715 (Evening)



PRE-TEXT

Graphics Design / Artwork
Flyers/Posters/Leaflets/Advertisements
Overhead Foils - Design & Preparation
Logo Design

All aspects of Desk Top Publishing

GEOF DYKES, RINGMORE VEAN, RINGMORE, TQ7 4HL
TEL 810123

TILLY DOWNING B.Sc. Pod., M.Ch. S.

STATE REGISTERED CHIROPODIST

Surgery or Home Visit
Three Years Training
Safe & Thorough

The Laurels, Fore Street, Aveton Gifford

Tel: 01548 550072

Opposite the Memorial Hall Car Park

BIGBURY SHOP & POST OFFICE

Daily Deliveries - No order too small - Just give us a ring

Bread + Fruit & Veg + Milk & Dairy Products

Newspapers & Magazines

Best Back Bacon + Ham + Tongue + Cheese
any amount cut

SHOP
Daily 8.00am - 4.00pm
Sunday 9.00am - 1.00pm
01548 810213

Aune Valley Meat
Color Gas & Coal
John & Margaret Inman

POST OFFICE
9.00am - 1.00pm
Monday to Friday
01548 810213

Julie
Fully Qualified
Mobile Hair-stylist



Ladies & Gents
Competitive Prices
Anaphone available

Bigbury-on-Sea
810634

ADVERTISING SPACE IS ALWAYS AVAILABLE

THIS AREA FOR £1 PER MONTH

810123

HIRAM BOWDEN



Repairs
Servicing
MOT

Cars collected & returned
Tel: 550129
Evening 01752 896065



Jinny McCabe
Wedding Florist

Bouquets

Church & Marquee
Decoration

Windwood Farm
Ringmore
Kingsbridge, TQ7 4HJ
Tel: 01548 810538

Kevin Light

PLUMBING & HEATING
CORGI & A.C.O.P. Reg.

Wychbury
Ringmore Drive
Bigbury on Sea

Tel 01548 810726
Mobile 07721 955506

FOR 'REAL' CHEESE & WINE

MACKGILLS + Handcut Farmhouse English & Continental Cheese



DELICATESSEN

- + Home-cooked Ham & Salamis
- + Home-cooked Pies & Cakes etc.
- + Wine, Beer, Sherry & Cider . . . and much more

Telephone Enquiries Welcome

4 Church Street, Modbury, Devon PL21 0QW
Telephone: Modbury (01548) 830860

Journey's End Journal



Easter Sunday Lunch

Sunday 15th April, 2001

4-Course Sunday Lunch

£9.95 per person

Melon with Minted Lime Sorbet
Watercress, Rocket, Pear,
and Walnut Salad
Seafood Gratin

Roast Spring Lamb

Grilled Trout
with a Tomato, Butter, and Chive Sauce

Baked Butter Beans with Leeks,
Parmesan and Cream

served with Roast or Boiled Potatoes,
Baked Tomato, Spicy Spring Greens,
Cauliflower Mornay

Sherry Trifle

Profiteroles

Ice Cream or Sorbets

Coffee and Mints

All dishes home made

British Fish Cuisine Evening

Saturday 21st April, 2001

3-Course Dinner

£14.95 per person

Home-made Fish Soup
Scallops with Lemon, Ginger, and
Vermouth
Crab Cake

Baked Rolls of Dover Sole
with a Fresh Basil Crust

Skate Wing
with a Savoury Caper and Lemon Dressing

Thai Style Mussels
Finished with Coconut Milk and Lime

All served with Champ, Green Salad,
and Home-made Sour Dough Bread

Lemon Meringue Pie
Apricot and Almond Pudding

Ice Cream or Sorbets

All dishes home made

Tel 01548 810205

Monday: Noon - 3.00pm 6.30pm - 11.00pm

but closed 2nd & 30th

Tues - Sat Noon - 3.00pm

6.30pm - 11.00pm

Friday: Early Doors Club 6.00pm

Food: 12.30pm - 2.30pm & 6.30pm - 9.00pm

Sun Noon - 10.30pm

Food: 12.30pm - 2.30pm & 6.30pm - 9.00pm

The first day of Spring passed in a flurry of sleet and rain but it did brighten up later on in the week to give us a real taste of Spring in the air.

March was a bit like that throughout with a sprinkling of highs and lows. We have missed the steady tramp of walkers boots that we normally experience at this time of year and people booking weekend breaks are as rare as sightings of the Abominable Snowman,

However we did have a great turnout for our first Curry Night of the year and Penelope Douglas' talk to the British Legion was both interesting and informative - a fascinating woman.

TEN YEARS AGO . . .

Mr Simon Day agreed to attend the Annual Parish Meeting. *Sir Simon Day has agreed to attend this year's APM . . . plus ça change!*

The Rank Organisation had plans for the Holiday Camp at Challaborough. *This year Bourne Leisure will have plans.*

The Ringmore Kids' Club met on the first Saturday of the month for games, a sing-song, videos and squash & biscuits! *Some of those kids must be at least . . . 10 years older!*



Our St Patrick's weekend was enjoyed by all who came. Copious quantities of Guinness were drunk, limericks were written in abundance, a lot of green pens were in evidence, Park Bench Aristocrats performed superbly (as always) and the Irish cuisine was a gastronomic delight.

Dave Wilkins was laid low with flu so unfortunately he had to postpone his debut to a later date but TQ7 stepped into the breach and went down a storm!

Mothering Sunday was an exceptionally busy lunch - an enjoyable family experience. It was also the day we did the draw for the gallon of whisky. Myra Eddy pulled out the winning ticket which belonged to Jenny Ebbs of Kingston. Our congratulations to Jenny.

A late edition to our calendar was a well-attended wellie evening on Friday 30th with music from Wendy, prizes galore, free drinks and good food. A super evening which raised money for a Farmers' Relief Fund.

Thanks again to our Quizmasters - only one more month to go!

Now to April....

Debbie and Grahame.



WOMEN IN THE COMMUNITY

The March meeting could have been a disaster owing to the Foot & Mouth situation. Our advertised speaker, Lawrence Woodward who runs an Organic Advisory Centre and Farm Research Laboratory in Berkshire, was unable to travel to Ringmore.

Who to fill the gap? Stan!!

As so often in the past, we threw ourselves on Stan's mercy and he did not let us down! Stepping neatly into the breach, he gave us one of his fascinating illustrated talks, this time on Canals and Waterways, with himself and Pam as the stars. It was really good and we were so grateful.

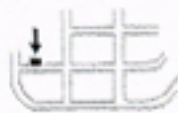
Next month we have a talk by Stuart Fraser, a freelance journalist.

Don't forget our Bank Holiday Easter Fair on 16th April. Something for everyone, young and old!

Naomi Warne

POST OFFICE STORES

Daily Deliveries Bigbury-on-Sea 810274
POST OFFICE - GROCERIES - BREAD - DRY CLEANING
CONFECTIONERY - PHOTOCOPIING - STATIONERY - VIDEOS
NEWSPAPERS - MILK & CREAM - FRUIT & VEGETABLES
CREAM BY POST - FRESH LOCAL MEAT - WINES & SPIRITS



Car Park

Stores open: 9.00am - 5.00pm
Except: Tuesday 9.00am - 1.00pm
Sunday 9.00am - Noon
Post Office open 9.00am - 1.00pm
Monday, Tuesday, Thursday, Friday

Mick & Carolyn Hunt

All orders promptly serviced & despatched. Friendly & courteous service

NIGEL FROST

B.Sc.(Hons)

Optometrist

FC Optom

Chene Court, Modbury
next to car park

01548 830944

Open Weekdays and Saturday Morning

Contact Lenses, Spectacles, Accessories
Complete Eye Examination

A M KING & SONS

Registered Builders

Internal & External Decorations

uPVC Windows & Fascias

Extensions/Conversions

New Kitchen
or Bathroom

810570



Residential
Care Home

Prop: Gina & Gordon Phillips

KORNILOFF

Overlooking Burgh Island

A Family-run Home NVQ trained staff

24 hour Care, Home cooking, Special diets catered for,
Stair Lift, Hairdresser, Chiropodist, Bath Hoist if needed
Large Single, Double or Twin rooms by choice. Some en-suite

Your Dignity and Privacy is paramount
Transport can be provided by arrangement
Devon County Council registered

Warren Road, Bigbury-on-Sea, Devon TQ7 4AZ
Telephone: 01548 810222



Canada Life

Canada Life Limited
Centre Court
75 Exeter Street
Plymouth
Devon
PL4 5AH

Tel: 01752 249922
470473
Fax: 01752 250319
Home: 01548 810407

For a discreet and confidential local service on
all financial matters that are important to you,
please feel free to contact me.

Mike Wynne-Powell

Senior Financial Consultant

Company Representative of The Canada Life Marketing Group in relation
to Life Assurance, Pensions, Unit Traders and Unit Trust PEP's only

The Canada Life Marketing Group consists of The Canada Life Assurance Company, The Canada Life Insurance Company
of Great Britain Limited, Canada Life Management (UK) Limited (regulated by FSA), Albany Life Assurance Company
Limited and Albany International Assurance Limited. All companies are regulated by the Financial Services Authority

ADVERTISING SPACE

IS ALWAYS AVAILABLE

This area for £1 per month

810123

Nicholas

HAIR & BEAUTY

8 Church Street, Modbury
South Devon Tel: Modbury 830152
Ladies' & Men's Hairdressing & Beauty Salon

or at Marine Hotel, Salcombe, South Devon Tel: Salcombe 843370

DAY OF BEAUTY

A relaxing and recharging day pampering at the luxurious Marine Hotel;
including sauna, swim, solarium, spa bath, full body massage, full Sothys
facial. Light lunch in the hotel lounge or restaurant followed by manicure,

Rob Batten Car Sales



Quality cars to suit all pockets
My prices can't be matched



Phone for a chat
810680



THE BAKERY

MODBURY

Bakers And Grocers
Farmhouse Bread
Hovis - Wholemeal



Take-away Snacks
Sandwiches

01548 830216

Easton House

Friday or Saturday

From 2.00 pm
Sunday
Noon til 3.00pm

Wine

Relax with an
Aperitif
in the Bar



Dine

Enjoy Food
and Wine from
our wide Selection

Licensed Restaurant

Reservations only 810644

The Royal British Legion

Penelope Douglas came to the Royal British Legion with tales of an exciting life amongst the Armed Forces. She was indeed a woman in a man's world as her publicity said. She entertained us admirably with an evening of slides illustrating her long career as an aviation artist, with commissions ranging from Vulcans to aircraft carriers. She even had to join the TA in order to get to one site as women were not allowed on the plane, obviously female members of the TA are not considered to be women! She started her career as an artist in Singapore and her slides demonstrated, as she said, her progression from amateur to craftsman or craftswoman, to be politically correct. After only two paintings of aircraft she decided she was a fully fledged aviation artist and approached the Royal Air Force as such. With such bravado a wonderful career was started. Penelope, a very petite lady, also has a knack for wearing the wrong shoes and during one commission to Cyprus to paint the 'new' Harrier, she was photographed wearing a G suit, flight helmet (the largest the dear chaps could find) and 'flip flops'!

Her stories were very entertaining and the evening ended too quickly. She brought along a selection of her animal paintings and her book giving more anecdotes about a very unusual career.

Members are reminded that meetings are held on the first Wednesday of the month at various venues. Please check the local newsletters or ring either David Young 810389 or me 810738 to confirm details. The next will be at the Journey's End on 4th April at 7.30pm. In May we shall meet at the Royal Oak, Bigbury at 7.30pm after which there will be a short talk by Phil Errett on the subject of Tank Design and Manufacture.

If any members have mobility problems and are unable to get to the Journey's End from the car park, please let me know and transport can be arranged.

Robbie McCarthy,
Hon Secretary

Royal British Legion 100 CLUB

Winners for January, February and March:

Jan:	£20	John Freeman
	£5	J Young
Feb	£20	Chris Roberts
	£5	Jim McGinley
Mar	£20	Michael Tagent
	£5	Chris Denham

There are still places available in the 100

RINGMORE HISTORICAL SOCIETY

THE GIANTS OF PLYMOUTH HOE

More than half a millennium ago, the people of Plymouth regularly paid for the cleaning and scouring of two giant figures cut in the turf of Plymouth Hoe. Details of payments covering almost a century can be found in Municipal Records. Two of them are as follows:

1486 It pd to Cotewyll for ye renewyng of ye pictur of Gogmagog upon ye howe
1567 20d new cuffing the Gogmagog

The Gogmagog figures were associated with a Cornish ruler, Corineus, who was said to delight in wrestling with giants. Legend relates that to Cornwall came numerous giants who were unwelcome elsewhere, among them 'a certain hateful one, by name Goemagot, twelve cubitts in height, who was of such lusthood that when he had once uprooted it, he would wield an oak tree as lightly as if it were a wand of hazel'. Goemagot was duly confronted by Corineus and the two wrestled on the Hoe. Three broken ribs, inflicted by the violence of Goemagot, were sufficient to enrage Corineus to the extent that 'he gathered up all his strength, heaved him (Goemagot) on his shoulders and ran with his burden as fast as he could for the weight to the seashore nighest at hand. Mounting up to the top of a high cliff, and disengaging himself, he hurled the deadly monster .. into the sea, where, falling on the sharp rocks, he was mangled all to pieces and dyed the waves with his blood, so that ever thereafter that place from the flinging down of the giant has been known as Langoemagot, to wit, 'Goemagot's Leap'..'. It has been maintained by some that originally there was one figure only, that of the giant, cut in the turf of the Hoe. They cite two further Municipal Record entries that could be taken to refer to just one figure:

1500-1 Item pd for makyng clene of gogmagog apon ye howe viijd.
1541-2 It pd to William Hawkyns baker for

cuttyng of Gogmagog the picture of the Gyaunt at howe viijd.

By 1602, when *Carews Survey of Cornwall* was published, there were certainly two figures. Carew writes: 'Upon the Haw at Plymouth there is cut in the ground the portrayture of two men, the one bigger, the other lesser, with clubbes in their hands (whom they term Gog Magog) and (as I have learned) it is renewed by order of the Townesmen when cause requireth, which shld infer the same to be a monument of some moment.

By 1630, the effigies have a name apiece. Westcote, writing in that year says of them: 'These they name to be Corineus and Gogmagog'.

Conjecture about the figures is extensive! and inconclusive. Much might be learned if they could be excavated, but it is largely assumed that they were destroyed or covered over when the Citadel was built in 1671. Yet a glimmer of hope remains. Heath, in his *Account of the Islands of Scilly*, written almost 80 years after the building of the Citadel, declares that the inhabitants of Plymouth show you a portraiture of two men, one bigger than the other, with clubs in their hands, cut out upon the Haw ground, which has been renewed by order of the place as they wear out'.

Perhaps, then, the figures remained in existence alongside the Citadel and even now are vestigially present beneath the turfy slopes rather than covered by the great granite structure. But again, perhaps not. Heath's words in his *Account* are suspiciously similar to those of Carew, already quoted above, and one cannot help thinking that in writing them he may have been guilty not only of a little armchair plagiarism but also of failing to check Carew's statement of 1602 against the facts of 1750.

Di Collinson

RINGMORE HISTORICAL SOCIETY

Wednesday 25th April
7.30pm
WI Hall
Miss Terry Pearson

'THE TALE OF THE MERMAID'
Why do so many mermaids appear as carvings in English mediaeval churches, often far from the sea?

Admission £1 Members 50p
including refreshments

WANTED

Long-Term Let - 2 Bedrooms
Please ring Terry Bent 810702

club. Why not invest £12pa for monthly prizes of £20 and £5 and the Christmas Bonus Prize of £300.

If you are interested, contact Colin Jackson on 810292. The 100 Club is not restricted to RBL members and is open to anyone who likes a flutter!

RINGMORE PARISH COUNCIL

Meeting: Tuesday 20th March
Present : 6 Councillors, the Clerk, Dist
Cllr B Carson, Millennium Cttee: Guy Eddy,
Neighbourhood Watch: David Young and
3 other members of the public.

Matters Arising: Compost heap at
Crossways - still there!

Defibrillator - just one member of the public
had come forward as a volunteer. An open
meeting with a demonstration of not only
a defibrillator but other methods of
resuscitation is to be arranged. Details
later.

Flooding/Drainage - flooding from the field
above the village is still occurring and a
major problem. Dist. Cllr. Carson has
spoken to the farm manager and it is
unlikely that this will stop until the current
crop is taken off the field and it is re-
ploughed. It is vital that drain grids are
kept unblocked to allow the surface water
to escape. Cllr Freeman will again clean
out some of the underground drains. Great
concern was expressed at the state of the
road by Trewarne which is sinking severely
and water is now pouring out from this
area, causing almost continual flooding of
Darkie Lane. Nick Bolton, Highway
Maintenance Engineer for Devon County
Council is to be asked to visit the village to
meet Parish Councillors to discuss the
various problem areas. Dog fouling - Cllr
Muller has obtained posters reminding
people to "Scoop the Poop". This is a
difficult time for dog owners with so many
areas out of bounds due to the foot and
mouth crisis, but the laws on dog fouling
still apply and the penalties are severe.

Matters Raised by Parishioners:
Neighbourhood Watch - nothing to report.

Footpaths - great concern was expressed
that some people are ignoring the signs
indicating the closure of footpaths.
Everyone is reminded that it is against the
law to use any footpath which bears a
closed sign and if caught doing so a fine of
up to £5,000 could result.

District Council

Mr Carson reported that of course the
major concern of SHDC at this time is the
effect of the foot and mouth outbreak not
only on the farming community but on the
tourist industry and all ancillary businesses.
The District Council has been considering,
along with Devon County whether there is
a case for relaxing some of the restrictions
at present in force, in areas where there is
no risk to farmed livestock. He highlighted
the hardship which is being caused to
some local residents by the closure of the
coastal footpath from Challaborough to
Bigbury on Sea making access to the Post
Office difficult.

He reported that it is possible that one
lane of the coast road at Slapton will be
open by Easter.

Footpaths Cllr Muller reported that the
kissing gate at Belle Vue has been installed.
The next grant for footpath maintenance is
due shortly and it is hoped that this may be
increased from last year.

Finance: The Clerk reported that the cost
of hire of the W.I. Hall has been raised
from £2.50 to £3.50 an hour. It was agreed
that the Town Well area should be kept
trimmed again this year, monthly,
commencing in April. The contractor has
agreed a price of £15 a visit, no increase
on last year.

Any Other Business : Queen's Golden
Jubilee 2002 - Cllr Tagent asked that the
Council consider ways in which the parish
might mark/celebrate this occasion. The
Council will discuss this at the next meeting.
If you have any ideas please let your
councillors know or come to the meeting
Radio Active Waste - the Chairman has
received a lengthy report on the subject of
RAW and its disposal. This will be
circulated to councillors for discussion at
a later meeting.

Flooding of Bus Shelter - Following heavy
rain the bus shelter continues to flood and
Cllr Muller and Freeman agreed to carry
out a feasibility study on the raising of the
floor level. They will report back to the next
meeting.

Cllr Dykes represented the Council at a
Parish Cluster Meeting on 14th March.
This meeting was called by SHDC as
required by the Government as part of the
consultation process regarding the re-
organisation of local government. The
preferred option of SHDC is a Council
Leader with a Cabinet appointed from the
elected councillors. Cllr Dykes agreed
that this appeared to be the best of the
options proposed.

Next Meeting : Tuesday 17th April W.I.
Hall 7.00pm.

Annual Parish Meeting : Wednesday 18th
April W.I. Hall 7.30pm.

PLEASE NOTE:

Refuse Collections - EASTER and MAY
BANK HOLIDAY

All collections during these weeks will be
one day late. In Ringmore it will be Friday
20th April and Friday 11th May.

Carol Allan

Ringmore WI **EASTER FAIR**



EASTER MONDAY 16TH APRIL

2pm in the WI Hall
Adults 50p - Children FREE
Cream Teas £1.50

**CAKES - PLANTS - BOOKS
TREASURE HUNT - BOOKS
EASTER EGG HUNT**

Items for stalls would be appreciated
Ring Pol King 810359

South West Devon Conservative Association

Bigbury, Ringmore and Kingston

A very successful AGM followed by the
Annual Dinner of the Branch was held at
Bigbury Golf Club on Friday on Friday
16th March with Gary Streeter and his wife
Janet as Guests of Honour. Tickets for the
Dinner were sold out a month before the
event and it proved a very happy and
convivial evening.

The Treasurer said that in addition to
Association funds, donations had been
made annually, to different charities,
including the RNLI and the Devon Air
Ambulance. This year the Bigbury
Memorial Hall had benefited by a donation
of £200.

Anyone requiring Postal or Proxy Voting
papers for the forthcoming elections should
contact Helen Smith on 810386.

Mike Patterson

RINGMORE in BLOOM

25th - 28th May

Flower Festival Ringmore Church

Friday 25th at 7.30pm
Gala Opening with
wine and music
Tickets: £5

Saturday/Sunday 26th/27th
Open 10.00am - 8.00pm
"Songs of Summer Praise"
Sunday at 7.00pm

Monday 28th
Open 10.00am - 5.30pm

Coffee, Lunches and Cream Teas
served in the WI Hall



The Royal Oak Bigbury

Telephone: (01548) 810313



APRIL DIARY

MARCH MADNESS PROMOTIONS
WILL CONTINUE UNTIL
THURS 5th APRIL (FOOD & BEER)

AUCTION VOUCHERS WILL CONTINUE
THROUGHOUT APRIL - 1 VOUCHER
FOR EVERY £1 SPENT (EXCLUDING FOOD)
AUCTION WILL BE ON FRIDAY 11th MAY

FUN RUN WEEKEND STARTS ON JUNE 8th
GET YOUR ENTRIES IN AND YOUR SPONSORSHIP
FORM FROM DEL FULLER OR AT THE ROYAL OAK

THURSDAY 12th - DARTS - HOME

SATURDAY 14th - LIVE MUSIC WITH JACK GRACE - EASTER

BONNET COMPETITION IN EVENING - PRIZES FOR THE BEST

SUNDAY 15th - CHILDRENS' EASTER EGG HUNT IN GARDEN - 12pm

SATURDAY 21st - LIVE MUSIC WITH WENDY

SUNDAY 22nd - CELEBRATE ST GEORGE'S DAY (A DAY EARLY)

2nd LEG OF THE DARTS CHALLENGE WAS POSTPONED - LOOK
OUT FOR THE NEW DATE

WE SPECIALISE IN OUTSIDE BARS AND SMALL PARTIES
CONTACT MARTIN OR TINA FOR FURTHER DETAILS



Enigma

March SOLUTION

In an attempt to make last month's puzzle more challenging information which could have been provided, was omitted. If you had known the scores, the solution would have been easy to find. Without the score it was nearer to the standard which I know is within your compass. If an assumption is made that the scores were equal, ie 71 points each, it would be seen that it is not possible for each competitor to score 3 points or 22 points and still total 71. A competitor cannot score 22 points and 50 points. The competitor who scores 50 must score 3 points also in order to reach 71.

The scores were as follows:

A 25 - 20 - 20 - 3 - 2 - 1

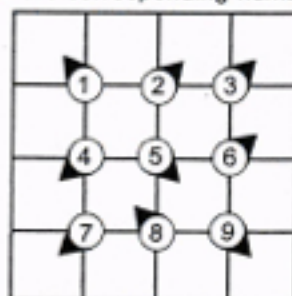
B 50 - 10 - 5 - 3 - 2 - 1

C 25 - 20 - 10 - 10 - 5 - 1

Gemini, Matchman and The Furry Boys reached the conclusion unaided: the Beginners received 'encouragement'; Taurus became wrapped in the Matador's cape and Real Sleuth had a go! To award points in accordance with these results might be perceived as being unfair which is not the intention. Nevertheless three points are awarded for a correct answer and two to all others entries, regardless. If anyone did not enter because they were confused or had mislaid the pen, contact Enigma and a deal will be done. William Hills do not think this will affect the final outcome.

April

Complete the grid with the four-letter definitions of the clues. Each word begins in the square indicated and moves clockwise or anticlockwise (work it out) around the corresponding number.



- | | |
|------------------|----------------|
| 1 Top point | 6 Only |
| 2 Fencing sword | 7 Manufactured |
| 3 Pour with rain | 8 Expensive |
| 4 Chopped off | 9 Nude |
| 5 River plant | |

shall be holding a dance later in the year and require someone to supply the music. If you know of a good Disco or a small Group that can play music to suit all tastes from Rock 'n' Roll through Waltz and Quickstep to Modern, please contact me on 810547.

Phillip Errett, Chairman

Inter-Parish Quiz

Ken West Plate Quarter-Finals

Wednesday 25th April
7.30pm

Sparkwell Village Hall

A	B
Holbeton	Ringmore
v	v
Cornwood	Sparkwell

Semi-Final

Winners of A v Winners of B

The three matches, each of 8 rounds, will take place on the same evening.



TABLE TENNIS

The Club, held on Tuesday evenings at 7.30pm in the Parish Room, continues to be well attended and standards can be seen to be improving as each week goes by. Any adult, whatever their standard, will be most welcome so why not come along and give it a try? A couple of new players have come along in the past month and have enjoyed themselves.

The Club will be exhibiting a Flower Arrangement in the Ringmore Parish Church festival during May. However I am stuck for an appropriate saying or short verse to accompany the arrangement. A 'Bottle of Wine' will be presented to the person who submits to me the words chosen to accompany the flowers.

Another 'want' to tax your brains . . . we