

# RINGMORE

AUGUST 2000

# PARISH NEWSLETTER

Editor: Geof Dykes 810123

Issue Number 180

## AUGUST DIARY

WEDNESDAYS: Step Aerobics Parish Room 8.30pm

- 2nd WI Fête WI Hall and Garden 2.00pm  
6th Tresillian Garden Project, Fore St., Kingsbridge  
Open Day 2.00pm - 5.00pm  
22nd Parish Council Meeting WI Hall 7.00pm  
26th View the Well at Walnut Tree Cottage 10.30am  
28th Church Fête Margaret's Field 2.00pm  
Sept  
6th RBL meeting Journey's End

**DEADLINE Fri 25th Aug**

### Mobile Library

August

Dates:- 4th & 18th

Ringmore Church

12.05 - 12.30

Challaborough

12.35 - 12.45

St Ann's Chapel

3.15 - 3.30

Kington Fire Station

3.45 - 4.30



Ave Jul for last 10 years - 2 1/4"  
High - Jul 1982/93/98 - 3 1/2"  
Low - Jul 1995 - 1/4"

Please send items for inclusion in the Newsletter to:  
The Editor  
Ringmore Parish Newsletter,  
Ringmoes Vean, Ringmoes, TQ7 4HL  
or put them in the letter box in the garage door

## In Thanks

*I would like to thank the whole village for their great kindness, sympathy and care after Bill's sudden death last month. Without that, and the support of my family, the shock would have been even harder to bear. From us all, to all of you, thank you, you are wonderful.*

*Naomi*

*Naomi Warne has written a note following Bill's funeral which was well-attended as many paid their final respects.*

*Don't miss the WI Fête on Wednesday 2nd - all proceeds will go towards the new access for the disabled. A lot of hard work is invested in these events and that alone deserves support. The late arrival of Summer might help to eradicate the memories of last year's dluvian festivities.*

*Becky Pitt married an old school friend, Samuel Dodman from Modbury on 29th July. The sun shone on the happy couple to whom we send all good wishes for the future.*

*This month is almost a continuous music festival at the Journey's End with live performances every Friday and some on Wednesdays. The Morris Men make their annual pilgrimage on Wednesday 16th.*

*Keen gardeners might wish to visit the Tresillian Garden Project in Kingsbridge. It could provide the inspiration you have been seeking.*

*Is their honey for tea? If not, Stan's the man.*

*In Alice in Wonderland, 'they lived at the bottom of the well'. You are invited to Walnut Tree Cottage to see if you can see 'them'!*

*Don't miss the Church Fête on 28th, Bank Holiday Monday. Everybody thinks that their pet is cute. Find out if others agree by entering the Pet Photo competition. Fête proceeds will go towards the enormous restoration bill facing the PCC.*

*Finally . . . . welcome to Piers Ireland and congratulations to Belinda and Andrew.*

## COLLECTORS CHOICE

### Antiques & Collectibles

Variety of antiques, valve radios, fountain pens, clocks. Extensive range of Art Deco items. Old and interesting items purchased.

For that unusual gift  
Pay us a visit

27 Church St., Modbury Tel 01548 831111



OPPOSITE  
COUNTRY FINE FURNITURE

## T.P.S. SERVICES

GARDENER  
PAINTER  
DECORATOR

GENERAL  
HANDYMAN

FOR FREE ESTIMATES CONTACT

**Mr T P Smith**

Modbury (01548) 830961

## THE BAKERY

MODBURY

Bakers And Grocers  
Farmhouse Bread  
Hovis - Wholemeal



Take-away Snacks  
Sandwiches

01548 830216

## SHEPPARDS

Chartered Accountants



Your Local Accountants

Call Ian or Yvonne Sheppard  
on (01548) 810341 or (01752) 220333  
fax (01752) 221742

Free initial interview & Free Parking

Atlantic Building, Queen Anne's Battery  
Plymouth PL4 0LP  
Full Accountancy & Taxation Service

## DOMESTIC TECHNICIAN

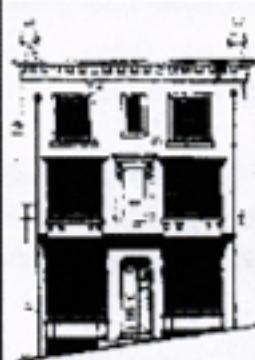
Jill

The Old Chapel, St Ann's Chapel

Tel: 01548 810715

Do you need a hand with  
Cleaning, Shopping, etc?  
Give me a call - I will do my best

Local, reliable, all-year-round service  
Hourly or Weekly rates



## DEVONSHIRE FINE ART

Antique Watercolours, Oil Paintings,  
Drawings, Maps and Prints.

Local Watercolours & Prints.

Quality Picture Framing Service.

9 Church Street, Modbury,  
Devon PL21 0QW  
Telephone/Fax: (01548) 830872.

## FARE DEALS TRAVEL SERVICES

For all your travel needs

01548 810869

email: ammfare@totalise.co.uk

From Acapulco to Zurich and all points between!

Flights Packages Tailor-made Ferries  
Hotel Insurance etc



Local Agent for AETA, London

# HOLYWELL STORES

(Opp: Pickwick Inn)

## St Ann's Chapel

MONDAY to SATURDAY 7.30AM - 6.00PM

SUNDAY 8.00AM - 5.00PM

(Open Daily 7.30am - 8.00pm July & August)

YOUR LOCAL STOCKIST FOR

CALOR GAS - AUNE VALLEY MEAT - RIVERFORD ORGANIC VEGETABLES

LANGAGE FARM CREAM & ICE CREAM

PLUS

FRESH DAILY BREAD - FRUIT & VEG. - NEWSPAPERS - OFF-LICENCE  
VIDEOS - COAL & LOGS - GROCERIES - FROZEN FOOD - DAIRY PRODUCE  
SEASONAL GOODS

MULTI-PURPOSE COMPOST

80 Litres 3.99 - 40 Litres £1.99

Grow Bags 99p

DELIVERY AVAILABLE ON ALL ORDERS OVER £10

For more details please telephone 810308

## August 2000 at All Hallows



*The Minister writes:*

The completely unexpected death of Bill Warne on June 29 happened after I had handed in this page for last month's Newsletter. Following so soon after Nancy Grimshaw's death, we found ourselves in our little Church community having to mourn first with George, and then with Naomi. The funerals were very well attended, as one would have expected, and now Nancy and Bill lie side by side in our lovely old churchyard. May they rest in peace; and may God give comfort to George and Naomi as we care for and share with them in our midst.

This month begins and ends with Fêtes, on the first Saturday in Kingston, and on Bank Holiday Monday (moved from its traditional date of the third Wednesday in August) here in Ringmore. Let us hope for good weather, and that a good time will be had by all, residents and villagers alike.

As no doubt you will be aware, my Licence to Officiate within the Modbury Team runs out at the end of its five years on November 30. I have asked the Bishop not to extend it, and have decided to leave the Team at the end of September. We hope to move to our new home in October. During that month I will be taking some leave (I haven't had a complete Sunday off this year) and getting packed and sorted for the move. Any more details will have to wait for next month's Newsletter.

I believe I'm going to miss you .....

Sincerely yours,

Derek Matten, Minister

The Church House, Ringmore

Tel: 810565

### DIARY FOR THIS MONTH:

| <b>EVERY SUNDAY IN AUGUST: Summer Singalong in Ringmore Church at 8 p.m., preceded by refreshments from 7.45 p.m.</b> |  |                                       |   |
|---|--|---------------------------------------|---|
| <b>Date:</b>  | <b>9 a.m.</b>  | <b>11 a.m.</b>                        | <b>6 p.m.</b>                           |
| <b>August 5</b><br><i>(Saturday)</i>  | <b>2 p.m. Kingston Village Fair</b>                                    |                                       |   |
| <b>August 6</b>   | <b>Kingston</b><br>Holy Communion (ASB)<br>& Children's Church         | <b>Ringmore</b><br>Worship at Eleven  | <b>Bigbury</b><br>Evening Prayer (BCP)  |
| <b>August 13</b>  | <b>Ringmore</b><br>Holy Communion (ASB)                                | <b>Bigbury</b><br>Worship at Eleven   | <b>Kingston</b><br>Evening Prayer (BCP) |
| <b>August 20</b>  | <b>Bigbury</b><br>Holy Communion (ASB)                                 | <b>Kingston</b><br>Worship at Eleven  | <b>Ringmore</b><br>Evening Prayer (BCP) |
| <b>August 27</b>  | <b>Ringmore</b><br>Holy Communion (BCP)                                | <b>Bigbury</b><br>Communion at Eleven | <b>Kingston</b><br>Evening Prayer (ASB) |
| <b>August 28</b><br><i>(Bank Holiday Monday)</i>  | <b>2.30 p.m. Ringmore Church Summer Fete on the Church House Field</b> |                                       |   |
| <b>September 3</b>  | <b>Kingston</b><br>Holy Communion (ASB)<br>& Children's Church         | <b>Ringmore</b><br>Worship at Eleven  | <b>Bigbury</b><br>Evening Prayer (BCP)  |

# Julie

Fully Qualified



## Mobile Hair-stylist

Ladies & Gents  
Competitive Prices  
Ansaphone available

Bigbury-on-Sea  
**810634**

### PHOTO EXPRESS - Modbury

Hours of opening

Monday 9.00am - 1.00pm  
to &  
Friday 2.30pm - 6.00pm  
Saturday 9.00am - 1.00pm  
2.30pm - 5.00pm

**MODBURY PHARMACY**

Tel: 830215



## PRE-TEXT

Graphics Design / Artwork  
Flyers/Posters/Leaflets/Advertisements  
Overhead Foils - Design & Preparation  
Logo Design  
All aspects of Desk Top Publishing

**GEOF DYKES, RINGMORE YEAN, RINGMORE, TQ7 4HL**  
TEL 810213

## Kevin Light

**PLUMBING & HEATING**  
CORGI & A.C.O.P. Reg.

Wychbury  
Ringmore Drive  
Bigbury on Sea

Tel 01548 810726

### FOR 'REAL' CHEESE & WINE

**MACKGILLS**

- ✦ Handcut Farmhouse English & Continental Cheese
- ✦ Home-cooked Ham & Salami
- ✦ Home-cooked Pies & Cakes etc.
- ✦ Wine, Beer, Sherry & Cider .....  
and much more



**DELICATESSEN**

Telephone Enquiries Welcome

4 Church Street, Modbury, Devon PL21 0QW  
Telephone: Modbury (01548) 830860

## M and J P Builders

All types of building work  
undertaken

New Buildings

Renovations

20 years experience  
in Building Trade

For FREE Estimates and Advice  
please phone  
**810633**

## Learn to Drive with Trev Drive In School of Motoring

Fully Qualified  
Department of Transport  
Approved Driving Instructor  
Pass Plus Registered

Quality patient/Tuition  
Door-to-Door Service  
Nervous Pupil Specialist

Discounts available for pre-paid bookings

£14 an hour  
£130 for 10 hours  
£240 for 20 hours

Telephone 01752 336464 (Daytime)  
Telephone 01548 810715 (Evening)

## TILLY DOWNING BSc POD

STATE REGISTERED CHIROPODIST

Home visits or in-surgery treatment  
3 years training, very safe and thorough



THE LAURELS, FORE STREET, AVETON GIFFORD  
TEL: 01548 550072

Near the School - opposite the car park

## BIGBURY SHOP & POST OFFICE

Daily Deliveries - No order too small - Just give us a ring

Bread + Fruit & Veg + Milk & Dairy Products  
Newspapers & Magazines  
Best Back Bacon + Ham + Tongue + Cheese  
any amount out

SHOP  
Daily 8.00am - 4.00pm  
Sunday 9.00am - 1.00pm  
01548 810213

Aune Valley Meat  
Color Gas & Coal  
John & Margaret Inman

POST OFFICE  
8.00am - 1.00pm  
Monday to Friday  
01548 810213

## T.P.S. SERVICES

GARDENER - PAINTER - DECORATOR  
GENERAL HANDYMAN

FOR FREE ESTIMATES  
CONTACT Mr T P SMITH

**Modbury (01548) 830961**

## HIRAM BOWDEN



**Repairs  
Servicing  
MOT**

Cars collected & returned  
Tel: 550129  
Evening 01752 896065



**Jinny McCabe**  
Wedding Florist

Bouquets

Church & Marquee  
Decoration

Windwood Farm  
Ringmore  
Kingsbridge, TQ7 4HU  
Tel: 01548 810538

## TEN YEARS AGO . . .

There was little news to cull from the August '90 edition.

Both the WI and the Church were promoting their respective fêtes. Pam Brunskill was seeking all manner of things for the WI. *Little has changed.*

The Church fête had taken place on 1st August, before publication date. The event opened at 2.00pm and by 8.30pm all traces were gone. *Little has changed.*

There was some dissatisfaction over the care or lack of it, shown by the 'tar and chipping cowboys' who had resurfaced the roads. *Little has changed.*

**HONEY**  
For sale



Cliff Path  
810654

### WALKING BY THE BOOK

A new booklet, describing six walks around the Kingsbridge/Salcombe Estuary, has been produced by the Coast and Countryside Service.

The guide leads walkers through woodland, across mud flats and on to ferries. All walks start in either Kingsbridge or Salcombe. Nigel Mortimer, the marine conservation officer has written notes about the life under and around the water.

The booklet is available for £2.25 from Tourist Information Centres, local shops, pubs and cafés.



WOMEN IN THE COMMUNITY

The July meeting was very well-attended and included some new members. The speaker for the evening was Sylvia Schillings, a talented and well-travelled craftswoman, who conjured up beautiful ornaments and flower pieces from silk and natural ingredients and herbs. Her talk was very much enjoyed.

The imminent Summer Fête was further discussed and finalised. It is next Wednesday, 2nd August - note this date, it is not to be missed! As usual there will be something for everyone.

Naomi Warne

## Journey's End Journal

They say that hope springs eternal and following on from last month's column, summer did finally arrive during July, though if it will last through August is anyone's guess.

Music again featured heavily in July with some super Friday night sessions - 'Hats off' to Hanging Johnny who once more packed 'em in on a sweltering night with rousing sea shanties which everyone could sing along to. An extra Music Night with Sweet 'n' Hot was a resounding success; many thanks to JB for his support.

Friday night IS Music Night throughout August with Wendy on 4th, Sweet 'n' Hot on 11th, Fiona on 18th and GIN rounding off on 25th. Park Bench Aristocrats will be performing live on Wednesday 9th and 23rd while the Morris Men visit us for their annual show on Wednesday 16th.

It was altogether a musical month.

So, to add a touch of class and the taste of culture to the proceedings, the Staff (well, the talented ones) will be holding an in-pub Painting Exhibition; prepare to be shocked and amazed on Tuesday 22nd and throughout that week. A selection of their masterpieces will be hanging in the pub, all for sale, and a proportion of all sales will go to a local charity. Please come along and give your support to this wealth of local talent.



Tel 01548 810205

Mon - Sat Noon - 3.00pm  
5.00pm - 11.00pm

Food: 12.30pm - 2.30pm & 5.30pm - 9.00pm

Sun Noon - 10.30pm

Food: 12.30pm - 2.30pm & 5.30pm - 9.00pm

Finally, don't forget that the Pub is now open from 5.00pm Monday to Friday and all day on Saturday and Sunday.

If you fancy a coffee in the morning we are open from 10.00am and we serve Cream Teas between 3.00pm and 5.00pm every afternoon. Ah, the joys of summer  
Debbie and Graham

STOP PRESS

Monday 28th

'Cellidh in the garden at the JE'  
3.00pm to 11.00pm

# WI FÊTE

Wednesday 2nd August  
2.00pm

WI Hall and Garden

Home-made Cakes Stall  
& Preserves

Book Stall  
Raffles

Stalls and Games

Refreshments

Plants and Produce

Bric à Brac

Books and items for the Bric à Brac  
would be appreciated

Cakes to the WI Hall on the day please

In aid of the disabled access to the Hall

**Modbury Service**

**TAXI**  
 Licensed Private Hire  
 Air, Sea and Rail Connections  
 Local and Long Distance  
 01548 830961  
 Licensed Public Hire

Air, Sea & Rail Connections      Local and Long Distance

**POST OFFICE STORES**  
 810274  
 Daily Deliveries Bigbury-on-Sea  
**POST OFFICE - GROCERIES - BREAD - DRY CLEANING**  
**CONFECTIONERY - PHOTOCOPYING - STATIONERY - VIDEOS**  
**NEWSPAPERS - MILK & CREAM - FRUIT & VEGETABLES**  
**CREAM BY POST - FRESH LOCAL MEAT - WINES & SPIRITS**

Stores open: 9.00am - 5.00pm  
 Except: Tuesday 9.00am - 1.00pm  
 Sunday 9.00am - Noon  
 Post Office open 9.00am - 1.00pm  
 Monday, Tuesday, Thursday, Friday

Car Park      Mick & Carolyn Hunt  
 All orders promptly serviced & dispatched      Friendly & courteous service

**Nicholas HAIR & BEAUTY**  
 8 Church Street, Modbury  
 South Devon Tel: Modbury 830152  
 Ladies' & Men's Hairdressing & Beauty Salon

or at Marine Hotel, Salcombe, South Devon Tel: Salcombe 843370  
**DAY OF BEAUTY**  
 A relaxing and recharging day pampering at the luxurious Marine Hotel including sauna, swim, solarium, spa bath, full body massage, full Sothys facial. Light lunch in the hotel lounge or restaurant followed by manicure.

**NIGEL FROST**  
 B.Sc.(Hons)      Optometrist      FBCO

Cheyne Court, Modbury  
 next to car park  
 01548 830944  
 Open Saturday Morning  
 Contact Lenses, Spectacles, Accessories  
 Complete Eye Examination

**Rob Batten Car Sales**

Quality cars to suit all pockets  
 My prices can't be matched

Phone for a chat  
 810680

**A M KING & SONS**  
 Registered Builders  
 Internal & External Decorations  
 uPVC Windows & Fascias  
 Extensions/Conversions  
 New Kitchen or Bathroom

810570

Wedding Bouquets      Funeral Tributes

**"Rosemary"**

Flowers for all occasions

1 Broad Street  
 Modbury  
 Tel 01548 830048

**Kingston Klobber**

For Waistcoats  
 Bow Ties  
 and many of your sewing needs

Kingston Klobber Home Farm  
 Kingston  
 Kingsbridge TQ7 4PU

Kim Watkins  
 01548 810361

Residential Care Home      Prop: Gina & Gordon Phillips      Hotel for the Elderly

**KORNLOFF**  
 Overlooking Burgh Island  
 A Family-run Home      NVQ trained staff

24 hour Care, Home cooking, Special diets catered for, Stair Lift, Hairdresser, Chiropodist, Bath Hoist if needed  
 Large Single, Double or Twin rooms by choice. Some en-suite

Your Dignity and Privacy is paramount  
 Transport can be provided by arrangement  
 Devon County Council registered  
 Warren Road, Bigbury-on-Sea, Devon TQ7 4AZ  
 Telephone: 01548 810222

**R & H PICKLES**  
 Modbury 830412  
 FOR ALL  
 DIY SUPPLIES  
 CLOTHING  
 FOOTWEAR  
 OIL  
 CAMPING GAZ  
 15kg & 19kg  
 GAS BOTTLES

**DELIVERY THURSDAY DELIVERY**

**PIPS** 830288

FRESH FRUIT & VEGETABLES  
 EVERY TIME YOU COME TO MODBURY

**Canada Life**

For a discreet and confidential local service on all financial matters that are important to you, please feel free to contact me.

Mike Wynne-Powell  
 Senior Financial Consultant  
 Company Representative of The Canada Life Marketing Group in relation to Life Assurance, Pensions, Unit Trusts and Unit Trust PEP's only.

Canada Life Limited  
 Centre Court  
 75 Under Street  
 Plymouth  
 Devon  
 PL 4 0LN  
 Tel: 01752 369922  
 Fax: 01752 361373  
 Home: 01548 810477

# RINGMORE PARISH COUNCIL

Meeting : Tuesday 18th July

Present: 6 Councillors; the Clerk; District Cllr. B. Carson; Neighbourhood Watch, D. Young; Millennium Committee, G. Eddy

## Matters Arising

Town Well: Work has now been completed to improve the safety of steps on the footpath and to restore the Well.

SWEB substation: The ivy has been cleared.

## Matters raised by parishioners

David Young (Neighbourhood Watch) reported that a sawing horse had been taken from a house in Challaborough and used on a fire at a beach barbecue. An individual, known to the police, was found trespassing at a house where the occupants were away. The person is not considered to be a threat. It was reported that a car, stolen from a garage in Challaborough, was found smashed up in Bristol.

## District Council

Cllr Carson gave an interesting report on the new structuring of the District Council and its aims to deliver a more open form of local government. He also reported on the success of South Hams teams in the recent Eurobell Games. Some 200 youngsters from Devon and Cornwall had taken part, including 3 coachloads from the South Hams. No information was available about the proposed new supermarket for Kingsbridge.

## Planning:

There were no objections to the application for the erection of a conservatory and alterations to garages at Westbury.

## Millennium:

Guy Eddy reported that the Committee met recently and agreed to pursue the matter of funding for the proposed clock on the Church Tower. The trees planted have grown well thanks to the warm, wet summer. The British Trust for Conservation Volunteers is to produce a calendar for 2001 showing completed Millennium Projects and it is hoped that the Millennium Bank at Ringmore will be included.

The notice board to display the village map at Challaborough is still awaited.

The next meeting will be on 5th September.

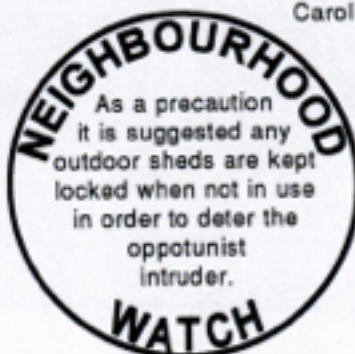
## Footpaths:

Cllr Muller advised the meeting that the new stile on the footpath leading to Nodden Mill had been erected. Both he and the National Trust have done further clearance on some paths and the NT has also cut a 'window' in the hedge on Smugglers Path to afford a fine view to anyone making use of the millennium seat.

## Next Meeting:

Tuesday 22nd August 7.00pm, WI Hall

Carol Allan



## Tresillian Garden Project

112 Fore St., Kingsbridge

The Tresillian Garden Project, in Kingsbridge, is holding its annual Open Day on Saturday 6th August.

The event will be staged at the Tresillian garden which is hidden behind the buildings in Fore Street. Visitors will be able to weave their own willow sculptures, learn about solar powered lighting and see a rainwater recovery system. A children's play area will be open and refreshments will be available. Joint Project Co-ordinator, Anna Brindley says, 'This is your chance to get involved in a unique community project in the heart of Kingsbridge'.

For details call Anna Brindley or Liz Collins on 853220 or the Tresillian Office on 853298.

*If you would like to see the re-opened Ancient Well at Walnut Tree Cottage come along on Saturday 26th August at 10.30am.*

*Coffee & Doughnuts on us!*

*Mike & Jacqueline*



## Cute Pet Photo Competition

As part of the Church Fête, a free, 'Cute Pet Photo Competition' will be held. Pictures will be judged and the prize awarded at the Fête on 28th August. All pictures will be returned.



Photographs can be left in my box, in an envelope marked with the name of the pet and the owner; alternatively, you can bring the photo to the Fête.

Yvonne Sheppard

## WANTED

James and Gillian have been lumbered with the Tombola Stall at this year's Church Fête!

If you have any full bottles, boxes, packages or wallets which you wish to donate, please drop them off at Pleasant Cottage before 28th August or call 810303

We will be most grateful.

Raffles - Cute Pet Photo Competition - Wine Games - Coconut Shy - Skittles - Tombola

Bank Holiday Monday 28th August

All Hallows Church Fete

2.00pm next to Church House Ringmore

In aid of Urgent Church Repairs

Cream Teas

CHILDREN FREE ENTRANCE 50P PARKING FREE

Guess the weight of the cake - Ice Creams - Darts - Bric à Brac - Snappy Castle - Books

Please contact Dina 810405 or Yvonne 810341 or Andrew 810456 for more details

Raffle competition - Lady Dip - Show - make - Books - Friends - Refreshments & Provisions

Band for a donation - Ringmore Historical Society Books and Maps - Treasure Hunt

The Royal Oak



FREE HOUSE

# The Royal Oak Bigbury

Telephone: (01548) 810313



MARTIN AND TINA INVITE YOU ALL ON  
**Thursday 10th August**  
7pm onwards to

## The Bigbury Barbecue

WITH NEW CHEF PAUL  
AT THE ROYAL OAK  
£5.00 per head



DRESS CODE - CARRY ON SINGING - THE LOUDER  
THE BETTER - PRIZES FOR THE BEST

GIGANTIC JENGA IN THE GARDEN

WHATEVER THE WEATHER - ENJOY IT TOGETHER  
(INDOORS? OR OUT)

## RINGMORE HISTORICAL SOCIETY

### RINGMORE CHURCH SCHOOL

The school in Ringmore was opened in 1863 and closed in 1929. During that time 535 pupils passed through the school. The School log is held at the Records Office in Exeter.

Below is an extract from the Inspectors Report for 1877.

'It is scarcely possible to imagine a more satisfactory state of discipline and attainments than that shown in this little School. The children are particularly clean and well-mannered and did their work with great neatness and accuracy, The writing being especially worthy of praise. Much skill and taste were employed in the decoration, inside and outside of the School. Such a use of flowers, provided it is not allowed to interfere with the preparation of more important matters, is to be highly commended, for it causes

children to regard their School as a bright and cheerful place.'

Alas, two years later, in 1879, things were not so good:

'Reading is fairly taught and Arithmetic is slightly better! but the state of the school is not yet satisfactory. More evidence is needed of skill, method and energy in the general style of instruction. The writing is below the mark. Grammar is not accurate. The presentation of geography to classes who are either utterly ignorant of the subject, or unable to answer the simplest questions only has the effect of discouraging the children and of furnishing additional evidence of defective teaching. Needlework is rather better, but not yet satisfactory. The attainments of the Infants are still so decidedly below the mark, that, unless improvement takes place, no Grant can be earned next year.

Enigma

July  
SOLUTION

Correct entries were received from Taurus, the Beginners, Matchman and from Gemini who has not had time to enter for some time. Welcome back.. Su da Nim, no doubt inspired by The Lovely SB last month, submitted an entry which was only a pop-up short of a pop-up answer! Very impressive. However please note that these innovative presentations cannot be returned as the office staff like to play with them on Wednesdays.

|   |   |   |   |   |   |   |
|---|---|---|---|---|---|---|
| F | Q | A | Z | U | R | E |
| O | P | U | S | E | O |   |
| C | I | K | N | O | B | S |
| A | I | D | S | I | E |   |
| L | S | W | A | T | S | J |
| E | O | H | E | R | E |   |
| A | X | I | O | M | V | M |
| A | N | G | E | R | M |   |
| A | M | A | S | S | R | Y |

August

Insert the correct numbers, all less than 10, some repeated, so that the calculations are correct. This is similar to last month's puzzle but for the numerate rather than the more literate. For a bonus, starting top and bottom left, insert the correct operands to make both diagonal sums equal; the centre operand must work for both diagonals.

|   |   |   |   |   |   |   |
|---|---|---|---|---|---|---|
|   | x |   | - |   | = | 6 |
| + |   | + |   | x |   | + |
|   | ÷ |   | - | 3 | = |   |
| - |   | - |   | ÷ |   | ÷ |
|   | - | 3 | + |   | = |   |
| = |   | = |   | = |   | = |
| 6 | - |   | - |   | = |   |

The children are obedient, possessed of very fair natural ability and fully capable of making sound and creditable progress'.

The Report made in 1929, just before the school's closure, was as follows: 'A very small school indeed but there is real life in it. The children were particularly bright and could think for themselves. Their answering was in every way satisfactory and showed that the Religious Instruction is being given on the right lines. There is an excellent tone in the school and the children's singing is worthy of special mention.' (F.W.Moore, Inspector)

Di Collinson