

RINGMORE

JUNE 2000

Editor: Geof Dykes 810123

Issue Number 178

PARISH NEWSLETTER

JUNE DIARY

WEDNESDAYS: Step Aerobics Parish Room 8.30pm

FRIDAYS: 9th & 23rd Friday Club Parish Room 5.30pm

- 3rd Bigbury Fun Run
7th Royal British Legion meeting JE 7.30pm
8th WI Barbecue Middle Manor 6.30pm
14th Garden at SCYPEN open 2.00pm - 5.00pm
18th Garden at SCYPEN open 2.00pm - 5.00pm
20th Parish Council Meeting WI Hall 7.00pm
22nd 'Antique Roadshow' Bigbury Memorial Hall 7.00pm

DEADLINE Sat 24th June

Mobile Library June

Dates:- 9th & 23rd

Ringmore Church

12.05 - 12.30

Challeborough

12.35 - 12.45

St Ann's Chapel

3.15 - 3.30

Kingston Fire Station

3.45 - 4.30



Please send items for inclusion in the Newsletter to:

The Editor

Ringmore Parish Newsletter,

Ringmore Veau, Ringmore, TQ7 4HL

or put them in the letter box in the garage door

Nancy Grimshaw

Everyone will have heard of the sad death of Nancy. With her passing, Ringmore has lost one of its favourite residents. Nancy was a lovely lady, a selfless person who was always far more concerned about the welfare of others than about her own health. She will be greatly missed.

We send our sympathies to George and the family. The latter will give George all the love and support he needs and when they are not there, we will be!

Both George and Nancy are in our thoughts.

We have a new Churchwarden. Yvonne Sheppard has been elected to serve for the next twelve months and we wish her well in her new post. At the same time we must thank Jacqueline Patterson for having filled the role for the past two years with such dedication.

At the Annual meeting of the Parish Council, Rob Batten and Annabel Major were re-elected as Chairman and Vice-chairman respectively.

Once again John and Ann Bracey will open the garden at Scypen this month in support of the National Gardens Scheme. The star attraction this year will be John's millennium globe which he made with his own fair hand and some cement.

In addition there will be the Annual WI Barbecue, music and Greek food at the Journey's End and 'a charity Antiques Roadshow' at the Bigbury Memorial Hall.

Thanks to Hazel Freeman who kindly provided details of the changes to the Friday bus timetable.

For those of you who follow the Inter-Parish Quiz, an excellent team from Newton & Noss Mayo beat a very good Wembury team 112-80 in the final.

And finally . . . Dave and Lynn of Old School Cottage will be tying the knot on Burgh Island on 3rd June. There will be appropriate celebrations back at the cottage and they ask the indulgence of anyone who has not been invited. The music will not be too loud and will not go on for too long.

Apologies for the errors and omissions last month; it was something of a 'calamitas paulus'.

Julie

Fully Qualified



Mobile Hair-stylist

Ladies & Gents
Competitive Prices
Ansaphone available

Bigbury-on-Sea
810634

PHOTO EXPRESS - Modbury

Hours of opening

Monday 9.00am - 1.00pm
to &
Friday 2.30pm - 6.00pm
Saturday 9.00am - 1.00pm
2.30pm - 5.00pm

MODBURY PHARMACY
Tel: 830215



PRE-TEXT

Graphics Design / Artwork
Flyers/Posters/Leaflets/Advertisements
Overhead Folis - Design & Preparation
Logo Design

All aspects of Desk Top Publishing

GEOF DYKES, RINGMORE VEAN, RINGMORE, TQ7 4HL
TEL 810123

Kevin Light

PLUMBING & HEATING
CORGI & A.C.O.P. Reg.

Wychbury
Ringmore Drive
Bigbury on Sea

Tel 01548 810726

FOR 'REAL' CHEESE & WINE

MACKGILLS

Handcut Farmhouse English & Continental Cheese

Home-cooked Ham & Salamis

Home-cooked Pies & Cakes etc.

Wine, Beer, Sherry & Cider
and much more

Telephone Enquiries Welcome

4 Church Street, Modbury, Devon PL21 0QW
Telephone: Modbury (01548) 830860

M and J P Builders

All types of building work undertaken

New Buildings

Renovations

20 years experience
in Building Trade

For FREE Estimates and Advice
please phone
810633

**ADVERTISING
SPACE
IS
ALWAYS
AVAILABLE**

This size for £1 per month
please ring

810123

TILLY DOWNING BSc POD

STATE REGISTERED CHIROPODIST

Home visits or in-surgery treatment
3 years training, very safe and thorough

THE LAURELS, FORE STREET, AVETON GIFFORD
TEL: 01548 550072

Near the School - opposite the car park

BIGBURY SHOP & POST OFFICE

Daily Deliveries - No order too small - Just give us a ring

Bread + Fruit & Veg + Milk & Dairy Products
Newspapers & Magazines

Best Back Bacon + Ham + Tongue + Cheese
any amount cut

SHOP
Daily 8.00am - 4.00pm
Sunday 9.00am - 1.00pm
01548 810213

Aune Valley Meat
Color Gas & Coal
John & Margaret Inman

POST OFFICE
9.00am - 1.00pm
Monday to Friday
01548 810213

T.P.S. SERVICES

GARDENER - PAINTER - DECORATOR
GENERAL HANDYMAN

FOR FREE ESTIMATES
CONTACT Mr T P SMITH

Modbury (01548) 830961

HIRAM BOWDEN



Repairs
Servicing
MOT

Cars collected & returned

Tel: 550129

Evening 01752 896065



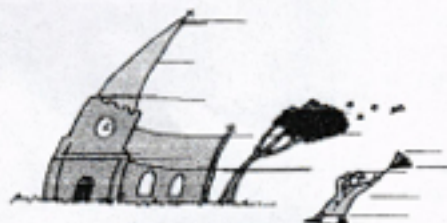
Jinny McCabe
Wedding Florist

Bouquets

Church & Marquee
Decoration

Windwood Farm
Ringmore
Kingsbridge, TQ7 4HL
Tel: 01548 810538

June 2000 at the Parish Church of All Hallows



The wind of the Spirit

The Minister writes:

This month we celebrate the "birthday of the Church", as it has sometimes been called: the great festival of Pentecost, or Whitsunday. It is more than a pity that this very important day has disappeared into something like limbo in contrast to Christmas and Easter, partly because our attitude towards holidays has changed.

What used to be the "Whit Monday Bank Holiday" has been replaced by the second of the Spring holiday weekends, and they are now fixed to the "normal" calendar, rather than to that of the Church year. This is, for the observance of Pentecost seven Sundays after Easter, a disadvantage, to say the least.

But I suspect that the neglect of Pentecost has something to do with the whole idea of "the Holy Spirit". We can relate to the birth of a baby at Christmas, and maybe to the death of that person thirty-odd years later on a cross. Difficulties begin with the idea of a resurrection, and then to add something so "airy-fairy" as a Holy Spirit takes some people way over the bounds of what they can digest.

Yet it was on that day that the followers of Jesus received the strength and conviction that enabled them to be transformed from frightened people remembering the Cross into courageous witnesses to the power and reality of the Resurrection. Now they could stand on their feet and declare that the Jesus who had been crucified was alive in their midst – and they could do this whatever the cost to their own lives.

We as a church today need that "wind of the Spirit" to shake us out of our lethargy and make us the witnesses to this great truth, which has so empowered people down the ages to serve like a Mother Theresa, to fight for justice like a Martin Luther King and to sacrifice their own lives for others like a Maximilian Kolbe. None of us, no doubt, will be ever as prominent as these, but our world desperately needs our witness, "you in your small corner, and I in mine".

So I hope for the "wind of the Spirit" in Ringmore this month.....

Sincerely yours,

Derek Matten, Minister

The Church House, Ringmore

Tel: 810565

DIARY FOR THIS MONTH:

Date:	9 a.m.	11 a.m.	6 p.m.
June 4	Kingston Holy Communion (ASB) & Children's Church	Ringmore Worship at Eleven	Bigbury Evening Prayer (BCP)
June 11 (Pentecost)	Ringmore Holy Communion (ASB)	Bigbury Worship at Eleven	Kingston Evening Prayer (BCP)
June 18	Bigbury Holy Communion (ASB)	Kingston Worship at Eleven	Ringmore Evening Prayer (BCP)
June 22 (Thursday) at 7 p.m. Antiques Evening in Bigbury Memorial Hall in aid of St. Lawrence Church Renovation Funds (see posters for more details)			
June 25	Ringmore Holy Communion (BCP)	Bigbury Communion at Eleven	Kingston Evening Prayer (ASB)
July 2	Kingston Holy Communion (ASB) & Children's Church	Ringmore Worship at Eleven	Bigbury Evening Prayer (BCP)

PARISH ROOM

In March the Parochial Church Council (PCC) reversed an earlier decision and agreed in principle to grant a lease to the Parish Room Committee (PRC). The PCC has had a difficult time during the past eight months and this has contributed to a delay in the progress towards the goal of completing the renovations and additions to the Hall. Matters are moving forward again and the process is in the hands of solicitors and the Charity Commission. With the good will which exists, discussions regarding the lease should be concluded before too long.

The hiatus caused a deferral of the Parish Room Committee's Annual General Meeting. This will take place once the go-ahead for a lease has received the blessing of the Diocese, the Charity Commission, the Trustees of the Hall, ie the PCC and the PRC.

The Hall Committee comprises nominees from the various hall users, others elected from the floor at the AGM and the Rector. Notices for the meeting will be posted at the appropriate time which might not be for a month or two. With the Summer intervening, the meeting might not take place until early Autumn to allow all interested parties to attend. Whenever it takes place, every attempt will be made to include all who wish to be there.

The committee faces a busy time in the next twelve months and will be hoping for support from anyone who has the time and energy to spare. A new secretary will be a priority as Yvonne Sheppard, who has been a stalwart since the committee was formed will have little time to spare as the result of her election as Churchwarden.

There will be much for the new committee to do. Some improvements have been made to the Hall during the past two years but the list of identified jobs is long. Anybody who has knowledge of building renovation would be a welcome addition to the committee. In general terms, consideration has to be given, among other things, to the external state of the building, the floor, a new kitchen, new storage facilities and a new entrance area. Application will be made for funds from the lottery and if this is successful and planning permission is granted, plans, as decided by the new committee, will be implemented. It is possible that matters could be completed by the end of 2001.

However the next step is for the two committees, the PRC and the PCC to meet and agree the terms under which a lease will be created. The legalities will then be completed and the steps outlined above can be taken.

Geof Dykes
PRC Chairman

Journey's End Journal

May has gone in a flurry of paint brushes, dustsheets and sawdust! The kitchen now has a char-grill while the bar has some new fittings and a coffee machine which makes excellent coffee.

Amongst this we had two evenings of live music with Fiona and Park Bench Aristocrats, both very enjoyable evenings.

Due to the changes, the Greek evening was postponed and is planned for Friday 16th June. Bookings are now being taken and the menu is available at the bar.

June kicks off with Sweet 'n' Hot on Friday 2nd, so do come along to a very mellow Jazz evening. The tempo changes on 9th when we have GIN playing. On 23rd, Park Bench Aristocrats will be back and the month finishes with Wendy on Friday 30th. There is certainly something for everyone this month and we look forward to seeing you.

Don't forget Father's Day on 18th June.

One further noteworthy date - 26th June sees our first anniversary - watch the chalk board for details!!!

Debbie and Graham



Tel 01548 810205

Mon - Sat Noon - 3.00pm

6.30pm - 11.00pm

Friday: Early Doors Club open 6.00pm

Food: 12.30pm - 2.30pm & 6.30pm - 9.00pm

Sun Noon - 10.30pm

Food: 12.30pm - 2.30pm & 6.30pm - 9.00pm



WOMEN IN THE COMMUNITY

The May meeting was not very well attended, although when members got down to the main business of the evening, the resolutions to be presented at the June Triennial Meeting at Wembley, they become more animated! A lively discussion took place with enthusiasm.

It is hoped that the ghastly weather will have improved by Bank Holiday Monday for the WI fundraising Garden Party in aid of the disabled access to the WI Hall, plans for which are going ahead well.

Naomi Warne

RINGMORE HISTORICAL SOCIETY

Prize Competition

Age Groups: 5-10 years & 11-15 Years

Write a mini-story of between 100 and 150 words which includes all the words below:
CALF STRAW FIELD HAY YELLOW
SUNNY RAGWORT VET REMEMBER
PLANT HURRY WORSE WORRIED
TELEPHONE COW BETTER DESTROY

The words may appear in any order and may be used more than once. Please include a small picture or drawing (your own work) to illustrate your story.

Entries to Dr Di Collinson at Belle Vue by Saturday 24th June, with name and age.

PLAYSCHEME

Anyone wishing or planning to run a playscheme this summer should apply to SHDC for help. This support is available in the form of free Art Kits or Play Equipment to the value of £40.

Further information can be obtained from Gill Till of the Leisure and Parks Section on 01803 861234 Ext 239

The Garden at SCYPEN

will be open on
Wednesday 14th June
Sunday 18th June
2.00pm - 5.00pm

TEAS



PLANTS

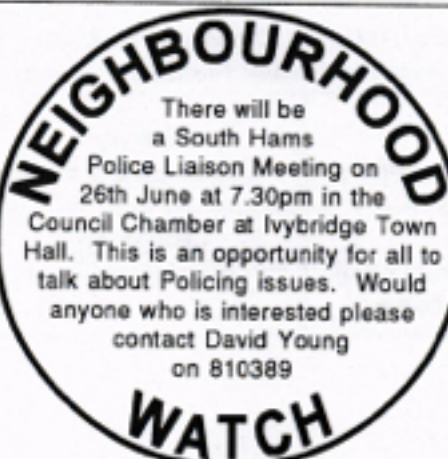
NO

FOR

DOGS

SALE

Adults: £1.50 Children 25p
The National Garden Scheme raised
in excess of £1½ million in 1999.



There will be a South Hams Police Liaison Meeting on 26th June at 7.30pm in the Council Chamber at Ivybridge Town Hall. This is an opportunity for all to talk about Policing issues. Would anyone who is interested please contact David Young on 810389

Modbury Service

TAXI
Licensed Private Hire
Air, Sea and Rail Connections
Local and Long Distance
01548 830961
Licensed Public Hire

Air, Sea & Rail Connections

Local and Long Distance

POST OFFICE STORES
Daily Deliveries Bigbury-on-Sea 810274
POST OFFICE - GROCERIES - BREAD - DRY CLEANING
CONFECTIONERY - PHOTOCOPIING - STATIONERY - VIDEOS
NEWSPAPERS - MILK & CREAM - FRUIT & VEGETABLES
CREAM BY POST - FRESH LOCAL MEAT - WINES & SPIRITS

Stores open: 9.00am - 5.00pm
Except: Tuesday 9.00am - 1.00pm
Sunday 9.00am - Noon
Post Office open 9.00am - 1.00pm
Monday, Tuesday, Thursday, Friday

Car Park Mick & Carolyn Hunt
All orders promptly serviced & despatched. Friendly & courteous service

Nicholas HAIR & BEAUTY
8 Church Street, Modbury
South Devon Tel: Modbury 830152
Ladies' & Men's Hairdressing & Beauty Salon

or at Marine Hotel, Salcombe, South Devon Tel: Salcombe 843370

DAY OF BEAUTY
A relaxing and recharging day pampering at the luxurious Marine Hotel; including sauna, swim, solarium, spa bath, full body massage, full Sothys facial. Light lunch in the hotel lounge or restaurant followed by: manicure,

NIGEL FROST
B.Sc.(Hons) Optometrist FBCO

Cheyne Court, Modbury
next to car park
01548 830944
Open Saturday Morning
Contact Lenses, Spectacles, Accessories
Complete Eye Examination

Rob Batten Car Sales

Quality cars to suit all pockets
My prices can't be matched

Phone for a chat
810680

Wedding Bouquets Funeral Tributes

"Rosemary"

Flowers for all occasions

1 Broad Street
Modbury
Tel 01548 830048

Kingston Klobber

For
Waistcoats
Bow Ties
and many of your
sewing needs

Kingston Klobber
Home Farm
Kingston
Kingsbridge TQ7 4PU

Kim Watkins
01548 810361

A M KING & SONS
Registered Builders

uPVC Windows & Fascias
Extensions/Conversions
Internal & External
Decorations
New Kitchen
or Bathroom

810570

Prop: Glyn & Gordon Phillips

Residential Care Home **KORNILOFF** Hotel for the Elderly

Overlooking Burgh Island
A Family-run Home NVQ trained staff

24 hour Care, Home cooking, Special diets catered for,
Stair Lift, Hairdresser, Chiropodist, Bath Hoist if needed
Large Single, Double or Twin rooms by choice. Some en-suite

Your Dignity and Privacy is paramount
Transport can be provided by arrangement
Devon County Council registered

Warren Road, Bigbury-on-Sea, Devon Tq7 4AZ
Telephones: 01548 810222

R & H PICKLES
Modbury
830412
FOR ALL

DIY SUPPLIES
CLOTHING
FOOTWEAR
OIL
CAMPING GAZ
15kg & 19kg
GAS BOTTLES

DELIVERY THURSDAY DELIVERY

PIPS 830288

FRESH
FRUIT
&
VEGETABLES
EVERY TIME YOU
COME TO
MODBURY

Canada Life
Canada Life Limited
Carnegie Court
73 Exeter Street
Plymouth
Devon
PL4 0AH

Tel: 01752 269922
475675
Fax: 01752 281579
Home: 01548 810407

For a discreet and confidential local service on all financial matters that are important to you, please feel free to contact me.

Mike Wynne-Powell
Senior Financial Consultant
Company Representative of The Canada Life Marketing Group in relation to Life Assurance, Pensions, Unit Trusts and Unit Trust FIEPs only

The Canada Life Marketing Group consists of The Canada Life Assurance Company, The Canada Life Assurance Company of Great Britain Limited, Canada Life Management (UK) Limited (Incorporated in GB), Albany Life Assurance Company Limited and Albany International Assurance Limited. All companies are regulated by the Financial Services Authority

RINGMORE PARISH COUNCIL

Meeting : Tuesday 18th April

Present: 6 Councillors; the Clerk; District Cllr. Brian Carson; Neighbourhood Watch, David Young. Apologies: Mrs Carol Allan

Election of Officers

Rob Batten was elected as Chairman and Annabel Major as Vice-Chairman .

Matters Arising

Town Well

Half of the cost of the renovations to the Town Well has been received from the Coast and Countryside Department. A quotation from AM King and Sons for the renovation of the steps leading up to the well was accepted.

Light Pollution

The offending lights at Haven Leisure have been identified and the matter will be discussed with the camp management.

A letter has been received from Bigbury Golf Club pointing out that their lights act as security lights on the advice of the local police. The matter will be pursued.

Journey's End Car Park

There has been no progress from the Highways Department in taking remedial steps to prevent water draining across the road into the bus shelter.

Table Tennis Table.

The Council reported at the last meeting that SHDC said tables were on permanent loan and that none were available. Pressure has brought action and one has been found and is available for Ringmore.

Matters raised by Parishioners

David Young reported some minor incidents with the warning to residents to be on their guard for people who call at the door for doubtful or spurious reasons, eg. 'We are looking for Sparkwell Zoo'.

District Council

Brian Carson reported on an Environmental Management Plan for the Avon Estuary. This plan, which is in the Draft Stage, covers a wide variety of topics relevant to the estuary including, Access, Recreation, Fisheries, Water Quality, Coastal Protection and Management.

Footpaths

A Kissing Gate has been placed on the path to Kingston at Bellevue. Further improvements are planned on the same path with the replacement of a dilapidated stile.

Finance

Payment was agreed for Insurance £150.31; AM King £129.25 for work on Town Well; Hire of skips, also £129.25; Mr J Reid £30.00 for strimming.

Next Meeting

Tuesday 20th June in the WI Hall

G D Dykes

Short Mat Bowls

The last Short Mat Bowls evening of the current season was held on 22nd May.

The new season commences on 4th September at 7.30pm and we look forward to seeing all the current members plus any souls who wish to test their skill in a relaxed atmosphere.

You do not need any special equipment to start as the club has its own bowls. The only 'must' is a pair of smooth soled shoes or slippers or even socks.

Expand your horizons; learn the mysteries of bias and wood magnets!

Alan McCarthy, Chairman

TEN YEARS AGO . . .

There was no Newsletter in June 1990.

An Evening 'Roadshow'

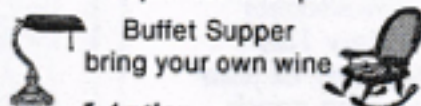
with

Michael Newman

of

Bonhams Auction House

Thursday 22nd June
7.00pm for 7.30pm



Buffet Supper
bring your own wine

1 Antique per person

Tickets: £10 from

Jacqueline Patterson 810311

In aid of Shekinah Mission

The Sun Shines on the ..

The weather forecast was not good, the rain clouds were gathering, and it started to drizzle as the stalls were set up. However, the famed Middle Manor weather did not desert us, and the annual Christian Aid coffee morning was dry and bright, albeit with a chill wind.

Everything was in order for the 10.30 am, start, and an hour and a half later, the grand sum of nearly £350 had been raised, which included some generous donations. Sadly, Nancy Grimshaw was not present, but George maintained the Middle Manor hospitality. Our thanks are due to George, to all the helpers and to all who supported this event.

Our fund-raising effort, added to similar efforts throughout the country, will enable Christian Aid to continue its humanitarian work throughout the world.

Rev Derek Matten

Royal British Legion

Have you thought of joining the British Legion? The Legion is as relevant today as when it was founded.

Last month the Bigbury, Ringmore and Kingston Branch called for new members to join. We hold our monthly meetings in the convivial atmosphere of the Journey's End Inn, Ringmore. We have occasional guest speakers and visits are planned for the summer season to places of interest such as the RN Museum and Dockyard at Devonport and the Britannia Royal Naval College, Dartmouth.

You don't need to have served in the armed forces to become a member but you should have an interest in the welfare of ex-servicemen. The Branch looks forward to welcoming new and existing members.

For further information call David Young 810389 or Brian Stark 810324.

Robbie McCarthy

Hon Secretary

Sold, Lost or Gone Astray

A framed photograph of Poppies by Mike Wynne-Powell and titled 'Lest We Forget' has disappeared from the Parish Room. It is part of the First World War Memorial and Roll of Honour and is the property of the Legion which is responsible for the upkeep of the Memorial

It is possible that it was inadvertently sold during the Blue Peter fund raising morning in March. If anyone is aware of the whereabouts of the photograph the British Legion would appreciate hearing from you.

Please contact Colin Jackson 810292 or David Young 810389.

100 CLUB

	£20	£5
Jan	G Young	Jenny Vanstone
Feb	Gillian Parkin	Chris Roberts
Mar	Michael Tagent	T Young
Apr	Roland Smith	Grahame Gilliam
May	Alan McCarthy	J Young

There are still numbers available if anyone wishes to join the 100 Club which is open to non-members of the Legion. The cost is £12 per annum. Prizes of £20 and £5 are drawn monthly and each Christmas there is a draw for £300.

Contact Colin Jackson on 810292

RED CROSS

Ringmore contributed £85.31p during the house-to-house collection in May. Thank you for your great generosity. It will help the Red Cross to provide local services for the most vulnerable people.

Mary Parry

COLLECTORS CHOICE

Antiques & Collectibles

Variety of antiques, valve radios, fountain pens, clocks.
Extensive range of Art Deco items.
Old and interesting items purchased

For that unusual gift
Pay us a visit

27 Church St., Modbury Tel 01548 831111



OPPOSITE
COUNTRY FINE FURNITURE

SHEPPARDS

Chartered Accountants



Your Local Accountants

Call Ian or Yvonne Sheppard
on (01548) 810341 or (01752) 220333
fax (01752) 221742

Free initial interview & Free Parking

Atlantic Building, Queen Anne's Battery
Plymouth PL4 0LP

Full Accountancy & Taxation Service

T.P.S. SERVICES

GARDENER
PAINTER
DECORATOR

GENERAL
HANDYMAN

FOR FREE ESTIMATES CONTACT

Mr T P Smith

Modbury (01548) 830961

THE BAKERY MODBURY

Bakers And Grocers
Farmhouse Bread
Hovis - Wholemeal



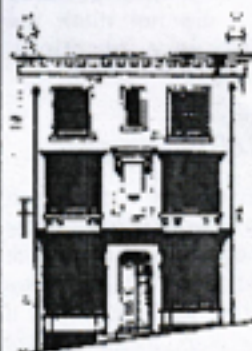
Take-away Snacks
Sandwiches

01548 830216

ADVERTISING SPACE

IS ALWAYS AVAILABLE

This area for £1 per month **810123**



DEVONSHIRE FINE ART

Antique Watercolours, Oil Paintings,
Drawings, Maps and Prints.

Local Watercolours & Prints.

Quality Picture Framing Service.

9 Church Street, Modbury,
Devon PL21 0QW

Telephone/Fax: (01548) 830872

FARE DEALS TRAVEL SERVICES

For all your travel needs

01548 810869

email: ammfare@totalise.co.uk

From Acapulco to Zurich and all points between!

Flights Packages Tailor-made Ferries
Hotel Insurance etc



Travel Agent for AETA holidays

HOLYWELL STORES

(Opp: Pickwick Inn)

St Ann's Chapel

MONDAY to SATURDAY 7.30AM - 6.00PM

SUNDAY 8.00AM - 5.00PM

(Open Daily 7.30am - 8.00pm July & August)

YOUR LOCAL STOCKIST FOR

CALOR GAS - AUNE VALLEY MEAT - RIVERFORD ORGANIC VEGETABLES
LANGAGE FARM CREAM & ICE CREAM

PLUS

FRESH DAILY BREAD - FRUIT & VEG. - NEWSPAPERS - OFF-LICENCE
VIDEOS - COAL & LOGS - GROCERIES - FROZEN FOOD - DAIRY PRODUCE
SEASONAL GOODS

MULTI-PURPOSE COMPOST

80 Litres 3.99 - 40 Litres £1.99

Grow Bags 99p

DELIVERY AVAILABLE ON ALL ORDERS OVER £10

For more details please telephone 810308



The Royal Oak Bigbury

Telephone: (01548) 810313



BIG NEWS IN BIGBURY

Bryan and Angie Carson are retiring from The Royal Oak, and we would like to thank our many friends, staff and customers for their loyalty and support over the last 14 years: you've all been great!

We're glad we don't have to go through tearful farewells though - we'll only be ½ mile away at Easton and will be back to plague you on a regular basis.

In the meantime, we would like to wish the new wonderful landlord and landlady MARTIN and TINA UREN good luck in the pub - if they enjoy it half as much as we have, they'll have a lovely time.

In their turn, Martin and Tina would like to meet and welcome customers old and new to the Oak.

P.S. DON'T FORGET THE FUN RUN ON JUNE 2nd, 3rd & 4th

Embarrassed

May SOLUTION

Binary was the key to last month's puzzle. If you spotted that, the solution was simple.



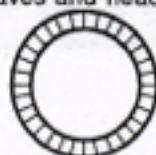
However not many of you filled the cups at all. Was it too difficult or were you just too busy. I am always (almost always) open to correction but I cannot find an entry from The Furry Boys, Cleriwho, The Lovely Sue B or even the Beginners. Am I forsaken? Only Taurus, apparently mine 'as always', Matchman and Su Da Nim submitted correct solutions. They are obviously used to keeping change in pots in the kitchen. I appear to have caused Su Da Nim some distress. It was unintentional but I did not think his suggestion was very practical. Somerfields sells rice.

June

The definition or synonym for each descriptive phrase or word is a six-letter word. Each word begins and ends with a pair of letters such that they begin the next word or end the previous word. If they are put in the circle in the correct order the circle will be closed.

- 1 The belief in one God as a ruler
- 2 Go back
- 3 Plant with prickly leaves and head
- 4 Scarcity
- 5 Pass by
- 6 Kiss and cuddle
- 7 Safe
- 8 Pure and decent

Example: LEADEN ENSURE REVILE



New Departure Times

Bigbury on Sea	9.40am
Bigbury	9.45
Challaborough	9.54
Ringmore Church	9.57
St Ann's Chapel	10.00
Kingston	10.13
Modbury	10.29
Plymouth	10.59

Return times remain unaltered.

RINGMORE PARISH CHURCH

We are delighted that we have new Churchwardens both here in Ringmore and also in Kingston. They were admitted to office at the Archdeacons Visitation Service in Kingsbridge on May 19. The new Churchwarden in Ringmore, elected on April 27, is MRS. YVONNE SHEPPARD, and the new Churchwarden in Kingston, elected on April 19, is MR TED CURTIS.

It may be of help to you to have the telephone numbers of The Churchwardens of our three Churches, in case you need to contact them on Church matters.

They are:
(for Ringmore and Kingston)
Mrs. Yvonne Sheppard, Three Ways, Ringmore, 810341
Mr Ted Curtis, Litchfield, Kingston, 810718
(for Bigbury)
Miss Alison Fraser, 8 Fincer Drive, Ivybridge, 017521 690119
Mrs. Mary Smallwood, The Small House, Easton, 810271

Ringmore WI.

BARBECUE

at
Middle Manor, Ringmore
by kind permission of
George Grimshaw

Thursday 8th June at 6.30 p.m.

Entrance
Adults £3.00 Children £1.00
to include
barbecue food, cheese and drinks

All proceeds go towards the
disabled ramp at the WI. Hall

Everyone welcome