

RINGMORE

MAY 2000

Editor: Geof Dykes 810123

Issue Number 177

PARISH NEWSLETTER

APRIL DIARY

MONDAYS: Short Mat Bowls Parish Room 7.30pm

WEDNESDAYS: Step Aerobics Parish Room 8.30pm

FRIDAYS: 12th & 26th Friday Club Parish Room 5.30pm

- 12th Music Night Journey's End
- 17th Coffee Morning Middle Manor 10.30am
- 19th Music Night Journey's End
- 20th Music Night Journey's End
- 23rd Parish Council Meeting WI Hall 7.00pm
- 27th F.I.V.E. St Lawrence Church, Bigbury 7.30pm

DEADLINE Thurs 25th May

Mobile Library

May

Dates:- 12th & 26th

Ringmore Church
12.05 - 12.30

Challaborough
12.35 - 12.45

St Ann's Chapel
3.15 - 3.30

Kingston Fire Station
3.45 - 4.30



Ave Apr for last 10 years - 2 1/2"
High - Apr 1992 - 5"
Low - Apr 1997 - 1/2"

Please send items for inclusion in the Newsletter to:

The Editor

Ringmore Parish Newsletter,

Ringmore Vean, Ringmore, TQ7 4HL

or put them in the letter box in the garage door

THANK YOU

Anyone who has been involved with producing a Newsletter or Information Sheet will know the difficulties of fitting all the contributions on to the page. They know the anguish of receiving 'just a small item' to be included, when everything has been done, the deadline has passed and you are about to leave for the printer!

That is why a huge 'Thank You' is due to Di Collinson for having deputised in April. Thanks to Di there was no need to 'miss' a month.

G'day mate! Sorry, a moment's regression. The Editor and the Proofreader have returned, as have a number of others, from foreign fields and are looking forward to a long, hot Summer.

Any uncertainties about the April Newsletter were completely unfounded. There was an almost seamless continuity which must have made it easy on the reader.

The recent rains have wrought some havoc on the coastline. No doubt continual seepage has contributed to a large rock fall between Ayrmer and Westcombe which has blocked the tunnel between the beaches. For the moment, which could be a few thousand years, we are denied this 'novelty' and it is an area to be avoided.

'Thanks' is extended to those who turned out in numbers for the Spring beach clean. This can never be more than short-lived as the next tide brings in more rubbish but it is a good start to the season and it is fun!

Did you see the stalwart group pictured in the Gazette at the end of March? Guy Eddy and the Tree People were featured at the scene of the planting. This 'accolade' was well deserved and the fruits of their efforts should become evident a few years hence as the planted bank becomes apparent from some distance.

Everyone will be saddened by Nancy Grimshaw's accident, unfortunate in itself but doubly so after her remarkable improvement following earlier problems. Spare a thought for both Nancy and George.

Modbury Service

TAXI
 Licensed Private Hire
 Air, Sea and Rail Connections
 Local and Long Distance
 01548 830961
 Licensed Public Hire

Air, Sea & Rail Connections Local and Long Distance

POST OFFICE STORES
 Daily Deliveries Bigbury-on-Sea 810274

POST OFFICE - GROCERIES - BREAD - DRY CLEANING
CONFECTIONERY - PHOTOCOPYING - STATIONERY - VIDEOS
NEWSPAPERS - MILK & CREAM - FRUIT & VEGETABLES
CREAM BY POST - FRESH LOCAL MEAT - WINES & SPIRITS

Stores open: 9.00am - 5.00pm
 Except: Tuesday 9.00am - 1.00pm
 Sunday 9.00am - Noon

Post Office open 9.00am - 1.00pm
 Monday, Tuesday, Thursday, Friday

Car Park Mick & Carolyn Hunt

All orders promptly serviced & despatched Friendly & courteous service

Nicholas HAIR & BEAUTY

8 Church Street, Modbury
 South Devon Tel: Modbury 830152
 Ladies' & Men's Hairdressing & Beauty Salon

or at Marine Hotel, Salcombe, South Devon Tel: Salcombe 843370

DAY OF BEAUTY
 A relaxing and recharging day pampering at the luxurious Marine Hotel; including sauna, swim, solarium, spa bath, full body massage, full Sothys facial. Light lunch in the hotel lounge or restaurant followed by: manicure,

NIGEL FROST
 B.Sc.(Hons) Optometrist FBOC

Cheyne Court, Modbury
 next to car park
 01548 830944

Open Saturday Morning
 Contact Lenses, Spectacles, Accessories
 Complete Eye Examination

Rob Batten Car Sales

Quality cars to suit all pockets
 My prices can't be matched

Phone for a chat
 810680

Wedding Bouquets Funeral Tributes

"Rosemary"

Flowers for all occasions

1 Broad Street
 Modbury
 Tel 01548 830048

Kingston Klobber

For Waistcoats
 Bow Ties
 and many of your sewing needs

Kingston Klobber
 Home Farm
 Kingaton
 Kingsbridge TQ7 4PU

Kim Watkins
 01548 810361

A M KING & SONS
 Registered Builders

uPVC Windows & Fascias
 Extensions/Conversions
 Internal & External Decorations
 New Kitchen or Bathroom

810570

Residential Care Home Prop: Gina & Gordon Philips Hotel for the Elderly

KORNILOFF
 Overlooking Burgh Island

A Family-run Home NVQ trained staff

24 hour Care, Home cooking, Special diets catered for, Stair Lift, Hairdresser, Chiropodist, Bath Hoist if needed
 Large Single, Double or Twin rooms by choice. Some en-suite

Your Dignity and Privacy is paramount
 Transport can be provided by arrangement
 Devon County Council registered

Marion Road, Bigbury-on-Sea, Devon Tq7 4AZ
 Telephone: 01548 810222

R & H PICKLES
 Modbury 830412
 FOR ALL

DIY SUPPLIES
CLOTHING
FOOTWEAR
 OIL
 CAMPING GAZ
 15kg & 19kg
 GAS BOTTLES

DELIVERY THURSDAY DELIVERY

PIPS 830288

FRESH FRUIT & VEGETABLES

EVERY TIME YOU COME TO MODBURY

Canada Life

For a discreet and confidential local service on all financial matters that are important to you, please feel free to contact me.

Mike Wynne-Powell
 Senior Financial Consultant
 Company Representative of The Canada Life Marketing Group in relation to Life Assurance, Pensions, Unit Trusts and Unit Trust PEP's only

Canada Life Limited
 Centre Court
 73 Gales Street
 Plymouth
 PL4 8AR

Tel: 01752 269923
 615673
 Fax: 01752 261379
 Home: 01548 810427

The Canada Life Marketing Group is a member of The Canada Life American Company, The Canada Life American Company 41 Dred Bridge London, Canada Life Management (UK) Limited (Incorporated by DABIC), Albany Life American Company Limited and Albany International American Limited. All companies are regulated by the Financial Services Authority.

May 2000 at the Parish Church of All Hallows



The Minister writes:

I have to go to press this month before the Annual Vestry and Parochial Church Meeting, so I will have to leave any news emanating from it until next time.

Looking back on our Easter Services (I write this on Easter Monday, right on the Editor's deadline!), it is with great pleasure that I can record super attendances at all three Churches, especially on Easter Day itself, Our very special thanks go to all who decorated the churches and to our BiKiRi Choir and organists for a truly uplifting musical accompaniment. Roll over, Beethoven (and Mozart)!

"F.I.V.E." ("Friends in Vocal Euphoria") are coming on **Saturday, May 27th** (not 13th, as I erroneously wrote last month) to give a unique concert In St. Lawrence, Church, Bigbury, which no lover of music should miss. More details are in a special notice elsewhere in this issue. The concert begins at 7.30 p.m. The chance to hear some of the best young singers in the country does not come every day – or even every year. You will, I guarantee, be very sorry if you miss the chance. Please come!

Sincerely yours,

Derek Matten, Minister

The Church House, Ringmore

Tel: 810565

DIARY FOR THIS MONTH:

Date:	9 a.m.	11 a.m.	6 p.m.
May 7	Kingston Holy Communion (ASB) & Children's Church	Ringmore Worship at Eleven	Bigbury Evening Prayer (BCP)
May 14	Ringmore Holy Communion (ASB)	Bigbury Worship at Eleven	Kingston Evening Prayer (BCP)
May 21	Bigbury Holy Communion (BCP) Preacher: David Irish (Bible Society)	Kingston Baptism at Eleven (Emily Violet Matson-Thomas)	Ringmore Evening Prayer (BCP)
May 27 (Saturday) at 7.30 p.m. F.I.V.E. Concert in St. Lawrence, Bigbury (see above!)			
May 28	Ringmore Holy Communion (BCP)	Bigbury Communion at Eleven	Kingston Evening Prayer (ASB)
June 4	Kingston Holy Communion (ASB) & Children's Church	Ringmore Worship at Eleven	Bigbury Evening Prayer (BCP)

T.P.S. SERVICES

GARDENER
PAINTER
DECORATOR

GENERAL
HANDYMAN

FOR FREE ESTIMATES CONTACT

Mr T P Smith

Modbury (01548) 830961

COLLECTORS CHOICE

Antiques & Collectibles

Variety of antiques, valve radios,
fountain pens, clocks.
Extensive range of Art Deco items.
Old and Interesting items purchased

For that unusual gift
Pay us a visit

27 Church St., Modbury Tel 01548 831111



OPPOSITE
COUNTRY FINE FURNITURE

THE BAKERY

MODBURY

Bakers And Grocers
Farmhouse Bread
Hovis - Wholemeal



Take-away Snacks
Sandwiches

01548 830216

SHEPPARDS

Chartered Accountants



Your Local Accountants

Call Ian or Yvonne Sheppard
on (01548) 810341 or (01752) 220333
fax (01752) 221742

Free initial interview & Free Parking

Atlantic Building, Queen Anne's Battery
Plymouth PL4 0LP
Full Accountancy & Taxation Service

Learn to Drive with Trev Drive In School of Motoring

Fully Qualified
Department of Transport
Approved Driving Instructor
Pass Plus Registered

*Quality patient tuition
Door-to-Door Service
Nervous Pupil Specialist*

Discounts available for pre-paid bookings

£14 an hour
£130 for 10 hours
£240 for 20 hours

Telephone 01752 336464 (Daytime)
Telephone 01548 810715 (Evening)

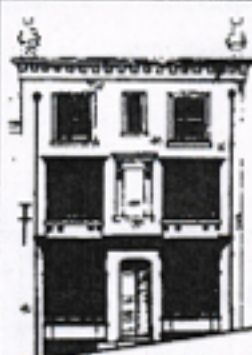
DEVONSHIRE FINE ART

Antique Watercolours, Oil Paintings,
Drawings, Maps and Prints.

Local Watercolours & Prints.

Quality Picture Framing Service.

9 Church Street, Modbury,
Devon PL21 0QW
Telephone/Fax. (01548) 830872.



ADVERTISING SPACE

IS
ALWAYS
AVAILABLE

*This size for £1 per month
please ring*

810123

HOLYWELL STORES

(Opp: Pickwick Inn)

St Ann's Chapel

MONDAY to SATURDAY 7.30AM - 6.00PM

SUNDAY 8.00AM - 5.00PM

(Open Daily 7.30am - 8.00pm July & August)

YOUR LOCAL STOCKIST FOR

CALOR GAS - AUNE VALLEY MEAT - RIVERFORD ORGANIC VEGETABLES

LANGAGE FARM CREAM & ICE CREAM

PLUS

FRESH DAILY BREAD - FRUIT & VEG. - NEWSPAPERS - OFF-LICENCE
VIDEOS - COAL & LOGS - GROCERIES - FROZEN FOOD - DAIRY PRODUCE

SEASONAL GOODS

MULTI-PURPOSE COMPOST

80 Litres 3.99 - 40 Litres £1.99

Grow Bags 99p

DELIVERY AVAILABLE ON ALL ORDERS OVER £10

For more details please telephone 810308

TEN YEARS AGO ...

The village was pre-occupied with a number of different items such as a new property not matching the agreed plans; the unannounced closure of the Post Office; the replacement of windows in the Post Office, against listed building regulations and action against the moving of large caravans through the village to Challaborough.

This last point generated considerable spontaneous support (some 60 people). The response was then co-ordinated by Rosemary Tate who reported the level of interest to the Parish Council.

A LIFE OF RILEY

Bill Warne, well-known Riley enthusiast and owner, is the organiser of the 75th anniversary celebration of the Riley Motor Club, the UK's oldest motor club. The Club was founded at the Peebles Hydro Hotel after the conclusion of the 1925 Whitsun London to Edinburgh Trial in which 25 Riley cars took part.

This year Bill is engaged in the organisation of 40 Riley motorcars which will start from the original departure point in London (Wrotham Park, Barnet, the seat of the Byng family) on Friday 26th May. The motorcars will travel up to Harewood House, Yorkshire and then, on 27th, they will drive over the Yorkshire moors to Cumbria, Gretna and Lockerbie, where they will stay the night. On 28th the motorcars will travel to Edinburgh and join the Scottish Riley enthusiasts in the grounds of Holyrood Palace. In all, over 60 Riley cars will be involved.

The final event will be a celebration dinner at the 4-star Peebles Hydro Hotel attended by 100 members and guests, some from Switzerland and Italy, including Victor Riley jr., son of Victor Riley one of the original Riley Brothers who created the Riley Motorcar and Motorcycle company. Bill also organised the 70th anniversary celebrations on similar lines.

For the technical reader, the first Riley car was made in 1898 and last in 1969

NEIGHBOURHOOD

There were no reported crimes last month.

However, it is suggested that if your house is to be empty even for one day, tell a neighbour or

NW

WATCH

Journey's End Journal

Hooray for May - Easter is now behind us and with it, the first Bank Holidays of the year. It was exceptionally busy here at the JE despite the vagaries of the weather.

Talking of 'wet', at the beginning of April some of our customers were slightly wetter inside than out as a record number of pints were drunk at our first Beer Festival of the Millennium. Super musical accompaniment by 'Fiona' on the Friday evening made the Festival buzz and with the exciting range of Belgian fruit beers available for tasting on the Saturday, alongside 21 beers from around the West Country, it was a great Festival. Roll on October for the next one!

Congratulations are in order to John Court who won the 3-litre (5 and one third pints) bottle of Duvel which has been languishing on our bar for several months.

April came to a close with 'Hanging Johnny' and 'Wendy J' singing us out with their differing styles.

May starts with another Bank Holiday and our first music is on Friday 12th with the return of 'Fiona'. A Greek cuisine evening is planned for Saturday 13th, so why not come along and smash a few plates. Bookings are being taken for this and a menu will be available shortly.

The regular Thursday night Quiz Session has now finished for the season - a very high THANK YOU to all our Quiz Masters and Mistresses for making it a very enjoyable, interesting and not too controversial season.

We will run some one-off quizzes during the coming months - watch this space for further details.

The last music of the month will be on Friday 19th with another old favourite, 'Park Bench Aristocrats'.

Finally, if anyone reading this would like some part-time work in a busy but friendly environment at the JE, either waiting or behind the bar, please contact Debbie on 810205.

Debbie and Graham



Tel 01548 810205

Mon - Sat Noon - 3.00pm

6.30pm - 11.00pm

Friday: Early Doors Club open 6.00pm

Food: 12.30pm - 2.30pm & 6.30pm - 9.00pm

Sun Noon - 10.30pm

Food: 12.30pm - 2.30pm & 6.30pm - 9.00pm



WOMEN IN THE COMMUNITY

The April meeting featured a talk and a demonstration of hairdressing techniques and styling by Julie Linzell of Ringmore. This is a subject which cannot fail to interest all members and so it proved!! Mickey Trant volunteered to be the model for Julie's attentions.

The WI Easter Fair was a great success. Everyone worked with a will and the faithful public turned up in force to make this event a very worthwhile project which raised a goodly sum to put towards the Hall alterations.

Next Meeting: 11th May - Resolutions Meeting.

Naomi Warne

WI. EASTER FAIR

Many thanks to all those who helped and supported the WI. Easter Fair on a rather wet and dull morning.

We raised the magnificent sum of £280 towards the cast of our disabled ramp and facilities. If anyone is wanting bedding plants for baskets and tubs, I still have plenty at Challaborough Cottage and all proceeds will go to the WI. Just pop round.

Jackie Tagent
President

CHRISTIAN AID COFFEE MORNING

MIDDLE MANOR

RINGMORE

By kind permission of George and Nancy Grimshaw

Wednesday 17th May

10.30am

Plant Stall, cakes and preserves, bring & buy and a raffle. Contributions for any of the stalls will be much appreciated and can be brought on the the morning at 10.30am

Entrance:

50p which includes refreshments

Julie

Fully Qualified



Mobile Hair-stylist

Ladies & Gents
Competitive Prices
Ansaphone available

Bigbury-on-Sea
810634

PHOTO EXPRESS - Modbury

Hours of opening

Monday 9.00am - 1.00pm
to &
Friday 2.30pm - 6.00pm
Saturday 9.00am - 1.00pm
2.30pm - 5.00pm

MODBURY PHARMACY

Tel: 830215



PRE-TEXT

Graphics Design / Artwork
Flyers/Posters/Leaflets/Advertisements
Overhead Foils - Design & Preparation
Logo Design
All aspects of Desk Top Publishing

GEOF DYKES, RINGMORE VEAN, RINGMORE, TQ7 4HL
TEL 810123

Kevin Light

PLUMBING & HEATING
CORGI & A.C.O.P. Reg.

Wychbury
Ringmore Drive
Bigbury on Sea

Tel 01548 810726

FOR 'REAL' CHEESE & WINE

MACKGILLS



- ♦ Handcut Farmhouse English & Continental Cheese
- ♦ Home-cooked Ham & Salamis
- ♦ Home-cooked Pies & Cakes etc.
- ♦ Wine, Beer, Sherry & Cider ... and much more

Telephone Enquiries Welcome

4 Church Street, Modbury, Devon PL21 0QW
Telephone: Modbury (01548) 830860

M and J P Builders

All types of building work undertaken

New Buildings

Renovations

20 years experience
in Building Trade

For FREE Estimates and Advice
please phone 810633

FARE DEALS

TRAVEL

Quality Service
Personal Attention

**the Independent Agent
for Independent People**

Make this the year that
YOU do something

different

From Ballooning to Whale Watching
You name it ... we will find it

Also, all the usual flights of fancy.
Air fares - Packages - Tailor Made, etc.
Rail Tours - Short Breaks - Car Hire
Hotels - Insurance

TEL: 01548 810869

HIGHER MANOR
RINGMORE
KINGSBRIDGE
TQ7 4HU



TILLY DOWNING BSc POD



STATE REGISTERED CHIROPODIST

Home visits or in-surgery treatment
3 years training, very safe and thorough



THE LAURELS, FORE STREET, AVETON GIFFORD
TEL: 01548 550072

Near the School - opposite the car park

BIGBURY SHOP & POST OFFICE

Daily Deliveries - No order too small - Just give us a ring

Bread + Fruit & Veg + Milk & Dairy Products
Newspapers & Magazines

Best Back Bacon + Ham + Tongue + Cheese
any amount out

SHOP
Daily 8.00am - 4.00pm
Sunday 9.00am - 1.00pm
01548 810213

Aune Valley Meat
Calor Gas & Coal
John & Margaret Inman

POST OFFICE
9.00am - 1.00pm
Monday to Friday
01548 810213

T.P.S. SERVICES

GARDENER - PAINTER - DECORATOR
GENERAL HANDYMAN

FOR FREE ESTIMATES
CONTACT Mr T P SMITH

Modbury (01548) 830961

HIRAM BOWDEN



Repairs
Servicing
MOT

Cars collected & returned
Tel: 550129
Evening 01752 896065



Jinny McCabe
Wedding Florist

Bouquets

Church & Marquee
Decoration

Windwood Farm
Ringmore
Kingsbridge, TQ7 4HU
Tel: 01548 810538

RINGMORE PARISH COUNCIL

Meeting : Tuesday 18th April
Present: 7 Councillors; the Clerk; District Cllr. B.Carson; Neighbourhood Watch, D.Young; Millenium Committee, G.Eddy and 1 other member of the public.

Matters Arising

Town Well area. It is intended to restore the Well and the matter of funding is being pursued. It was agreed to obtain a quotation for the sympathetic improvement of steps on The Green as they are often very slippery and potentially unsafe.

Crossways. The tree which had caused concern to some residents has been removed. The mound of rubbish will be removed by SHDC and residents have been asked not to dump there in future.

Matters Raised by Parishioners

Neighbourhood Watch: David Young was pleased that there was nothing to report.

Parking at Crossways: A complaint had been received from a resident that parking in the area of the telephone box had on occasion blocked access to their property. The Council requests, through this report, that anyone using the parking area concerned, should show due consideration and ensure that no access is obscured at any time.

Sports Equipment: The Chairman has received a letter concerning sports equipment which can be hired from South Hams Leisure and Parks Service. It is understood that SH Leisure and Parks Service has two table tennis tables each of which could be hired for just £1 for a year as a start-up scheme for a club. (Ringmore Short Mat Bowls was started with help from the same scheme). The tables are unavailable as they are permanently on loan to Kingsbridge School and Ivybridge Leisure Centre. The Council felt that this was unfair and District Cllr. Carson agreed to take this matter up on our behalf.

District Council

Cllr Carson spoke on the problems of waste management and the huge costs involved. SHDC are aiming to purchase land at Torr Quarry for the site of a waste transfer depot which will save costs on haulage. It now appears that hazardous waste such as asbestos can be taken to Torr Quarry. The Leisure Centres are still looking to attract participants with their monthly membership of unlimited swimming or other activities and parking.

Nigel Mortimer and other agencies are working on maintenance of the Estuary, looking at silting, water flow, pollution etc. Watch out for notices of meetings.

Footpaths:

Cllr Muller expressed thanks to all those who helped with the beach clean at Ayrmer

Cove. He pointed out that the tunnel between Ayrmer and Westcombe, often used at low tide, has been blocked by rock falls. The kissing gate and stile for the footpath from Belle Vue Farm to Nodden Mill has arrived and will shortly be installed. The National Trust is to undertake work on the Bridleway to Ayrmer Cove to improve the drainage and the surface. Cllr.Freeman reported some erosion of the footpath above Challacott from Challaborough to Ringmore and the Clerk will write to English Heritage - Coastal as this part of the footpath is their responsibility.

Millenium

Guy Eddy reported that the log seats are now in place. The Parish Map is installed on the bus shelter in Ringmore and being well used. The Council approved that work should commence on the frame for the map being installed at Challaborough, at a cost of £50. It is understood that Haven Leisure is likely to generously cover these costs. The mugs have arrived and are considered to be a great success.

Light Pollution

It was agreed that the Clerk should write to Bigbury Golf Club where the lighting has been the subject of a number of complaints. Cllr.Freeman will identify lights at Haven Leisure which offend and report back.

Any Other Business

Cllr.Major reported that in the recent heavy rain the Bus Shelter had again flooded. The Clerk will contact Devon Highways.

Date of Next Meeting: Tuesday 23rd May at 7.00pm W.Hall

Carol Allan

Royal British Legion

Have you thought of joining the British Legion? The Legion is as relevant today as when it was founded.

Last month the Bighury, Ringmore and Kingston Branch called for new members to join. We hold our monthly meetings in the convivial atmosphere of the Journey's End Inn, Ringmore. We have occasional guest speakers and visits are planned for the summer season to places of interest such as the RN Museum and Dockyard at Devonport and the Britannia Royal Naval College, Dartmouth.

You don't need to have served in the armed forces to become a member but you should have an interest in the welfare of ex-servicemen. The Branch looks forward to welcoming new and existing members.

For further information call David Young 810389 or Brian Stark 810324.

Robbie McCarthy
Hon Secretary



DO YOU HAVE DIFFICULTY GETTING TO THE SHOPS?

If you are a patient of Modbury Health Centre and you have difficulty getting to the shops. MODBURY CARING may be able to help you.

We are launching a new service. We plan to take patients by car to the local shops or to a supermarket, where they will be able to do their own shopping, assisted by the volunteer driver.

The idea is for people who don't get out often to have a trip out and to be able to select their own purchases, rather than having to rely on other people to do it for them.

Patients who use a wheelchair will be eligible for this service provided that they can transfer from chair to car with minimum assistance.

If you feel you might benefit from this service, please contact Jean at the Health Centre on Tuesday or Friday mornings or call her on 830115.

We would also be pleased to hear from anyone who would like to be involved in providing this service.

On behalf of all who benefit from MODBURY CARING I should like to thank everyone who supported our Silent Auction on 8 April 2000 at the Modbury Memorial Hall.

Special thanks go to Jean Barker for organising the event and freely giving her time and effort to make the evening such a success. Thank you also to Phil Andrews for his splendid auctioneering skills, Gillian and Mike Hatton for displaying the lots so beautifully and Rob West assisted by James Thomas for the efficient bar service.

Lastly but not least I would like to thank all the kind people who donated their treasures for us to auction and to everyone who purchased them. You made a grand total of £1225.00,

THANK YOU ALL VERY MUCH.

Jean Flockhart
Co-ordinator Modbury Caring.

RINGMORE HISTORICAL SOCIETY

ANNUAL PARISH ASSEMBLY

If Wiltshire is part of the West Country, Devonians may take pride and pleasure in the writings of a certain West countryman, John Aubrey, born at Malmesbury in 1625. Aubrey is best known for his book, *Brief Lives*, a wonderful collection of reminiscences and gossip about his friends and acquaintances. His way with words is little short of magical.

One Devonian known to him was Sir Walter Raleigh, the great sea-dog, explorer and courtier. He had, Aubrey tells us, 'a most remarkable aspect, an exceeding high forehead long-faced and sour eie-lidded, a kind of pigge-eie'.

Sir Walter was executed, and the night before the beheading he wrote to his relatives in his bible: *Beg my dead body, which living is denyed you; and bury it either in Sherborne or Exeter church. He had already made an ingenious attempt to escape his fate and this was succinctly related by Aubrey: 'By his great skill in chemistry, he made himself like a Leper: by which means he thought he might retard his journey to a Prison: and study his escape. Dr Heydock was sent for to give his opinion, if the prisoner might be carried to London without danger of his life. The Dr feels Sir Walter's Pulses and found they did beat well: and so detected the imposture. Aubrey was able to impart a whole personality to us in very few words. Consider his account of Katherine Phillips, poetess and infant prodigy. She was very religiously devoted when she was young; prayed by herself an hower together, and tooke sermons verbatim when she was but ten yeares old...she was mighty apt to learn, and she assures me that she had read the bible through before she was full four years old...very good-natured; not at all high-minded; pretty fatt; not tall; red pumpled face; wrote out verses in Innes, or Mottos in windowes, in her table book.*

A pumpled face, whatever that exactly may have been (one can imagine), was not a rarity, and drastic treatment was meted out by a Dr William Butler to one sufferer, 'a Gent, with a red ugly pumpled face'. Aubrey writes: *'Said the Dr, I must hang you. So presently he had a device made ready to hang him from a beam in the roome, and when he was e'en almost dead, he cutt the veines that fed these pumpled and let out the black ugly Bloud, and cured him'.*

One of Aubrey's longer memoirs is of that supreme English philosopher, Thomas Hobbes, also born in Malmesbury. Hobbes, like Raleigh, like Aubrey himself,

was a Westcountryman through and through. Aubrey remarks of Hobbes that 'though he left his native sometimes one might find a little touch of our pronunciation', and of Sir Walter that he spake broad Devonshire to his dying day. Hobbes lived to the magnificent age of 91 and Aubrey describes his method of maintaining good health: 'He had always bookes of prick-song lyeing on his table: which at night, when he was abed, and the dores made fast, and was sure nobody heard him, he sang aloud (not that he had a very good voice) but for his health's sake: he did beleeeve it did his Lunges good, and conduced much to prolong his life.'

Aubrey's own life was a jumble of misadventure and insatiable curiosity. He enthusiastically investigated heraldry, architecture, astrology, numismatics, antiquities, fossils, church monuments, minerals, rivers, education, witchcraft, superstitions, animal husbandry, herb diet and geology. He was fascinated by Stonehenge and it was he who discovered the great stones at Avebury and immediately recognized their significance. He was wholly incompetent at managing his life and lived perpetually on the brink of both poverty and marriage whilst reeling in amazed delight at the teeming kaleidoscope of fact, fancy and foible presented by the world around him. Without Aubrey we might not know that it was William Oughtred who invented the multiplication sign, that the great William Harvey, 'inventour of the Circulation of the Bloud', cured his gout by puffing his legs in pails of cold water, that the philosopher, Descartes, did geometry with a pair of Compasses with one of the Legges broken, that the political theorist, James Harrington, grew to have a phancy that his Perspiration turned to Flies, and sometimes to bees', that William Shakespeare claimed that he never blotted out a line in his life, and that the great Sir Christopher Wren, whose machine to weave nine pairs of stockings in one operation made the weavers fear unemployment, 'was so noble... he breakes the Modell of the Engine all to pieces, before their faces.

It is all gossip and acute observation of the most marvellous kind, entirely free from rancour, venom and moralising, and it has survived because Aubrey gave large boxes of his notes to the Ashmolean Museum in Oxford. Luckily for us, the boxes survived several robberies. And as Aubrey himself once modestly remarked, 'How these curiosities would be quite forgott, did not such idle fellowes as I am putt them down.'

The Annual Parish Meeting is the time when the Parish Council 'appears' before the electorate and presents its annual report. In some parishes this can be a difficult time for councils especially when there have been contentious matters on the agenda during the year.

This is reflected over the years by the attendance. When the Newsletter started in 1985 the Meeting was reported in some detail but as the years passed the reports became sketchy and finally disappeared in 1994. 1986 was well reported but this might have been due to the fact that Myra Eddy was deputising as Clerk (not for the last time!). 1989 and 1990 were well reported both lamenting the poor attendance. 1992 was the time of the sale of Lower Manor Farm to the National Trust and this created a great deal of interest.

So, it is perhaps surprising that, including Guest speakers, Parish Council members, the Clerk and members of the public, there were 29 people in attendance at this year's meeting held on 26th April in the WI Hall.

In his report, Chairman Rob Batten reported on a quiet year and thanked all councillors for their contribution.

Sgt. Whitcliffe Jones from Kingsbridge had little to report in terms of crime in the area during the last 12 months but his comments on the low staffing levels in the South Hams Police area were of some concern.

Simon Garner, from the National Trust, gave a full account of the Trust's activities in Ringmore and neighbouring parishes both in maintaining footpaths and in husbanding the land in their ownership. There is a full programme of work planned, but it all depends on resources.

Our District Councillor attends almost every Parish Council meeting and he refrained from stealing the thunder of the main speaker, Cllr. Owen Masters, Leader of SHDC. The meeting was given a clear appraisal of the options which the Government has given local councils in order to bring about changes in their structure. Rather than opting for a 'London-style' mayor, South Hams has chosen a format where it will have a Leader who will appoint a 'Cabinet' of members to be approved by the whole council. He answered questions on Waste Disposal, Regional Government, Car Park charges and Public Transport.

The meeting concluded with a Millennium Report, read by Thelma Mann, in the absence of Guy Eddy.



The Royal Oak Bigbury

Telephone: (01548) 810313



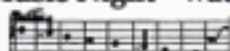
MAY DIARY

The spring has certainly 'sprung' this year - leaks on all sides and torrential roads! We won't be downhearted though - May will bring the sunshine, and Bigbury moves into 'Summer mode'.

COME AND JOIN US

for the usual tasty menus indoors or out in the garden

Sat 13th May is Music Night - watch out for posters



The **BIG** event of the year is the **FUN RUN**

which takes place on the first weekend in June

Brochures for the event are available at the pub

Some of the main events include:



Fri 2nd June - 8-11pm - Live music with Wild Country

Sat 3rd June - **THE FUN RUN** and Olympic Radio Roadshow

Sun 4th June - **THE** spectacular Football Match

at The Memorial Hall playing fields - Come and join the fun!!!



F. I. V. E.

(Friends In Vocal Euphoria)

are members of Landibus, the Chamber Choir of the 130-strong National Youth Choir. These 22 singers are selected by audition, and F.I.V.E.— one each of soprano, mezzo-soprano, contralto, tenor and bass — have got together to bring us an evening ranging from the religious through the secular to downright fun!

This is a unique chance to hear these brilliant young singers, who are coming without fee to help us boost the funds now to be invested in helping the Church of St. Lawrence to take on a new look. Interior repairs and long-overdue redecoration, for which Diocesan permission and grants have been applied, are scheduled for this summer at a cost in excess of £12,000.

So please support YOUR Parish Churches and their music on this very special evening. You will enjoy it; that's for sure!

Admission (pay at the door) : £4 (children £2), including refreshments

Saturday, 27th May at 7.30 p.m.

St Lawrence, Bigbury

Enigma

April
SOLUTION

A	I	S	R	S	A
T	A	T	U	A	T
S	H	A	A	L	L
I	S	A	A	U	B
L	A	I	A	L	L
A	U	T	U	R	A

Thank you all for your warm welcome back especially from the Lovely Sue B. Taurus, The Beginners and Su da Nim submitted differing but correct answers. None matched my piece of paper but none can be denied although The Beginners reduced the contiguity to the barest minimum. It might have been invalid had not the offside law been changed! Su da Nim has a problem as he wants me to believe that he left Laos for honourable reasons... as if I haven't enough problems of my own. Just do the puzzle! The Furry Boys misunderstood the task and made up their own shape to include the appropriate letters instead of retaining the letters in their original places. However this used enough brain power to merit two points. Matchman transposed a couple of letters and he is too experienced a competitor to expect leniency, which is just as well.

May

This month's puzzle is simple if you know how. If not, it requires some lateral thinking or some inspired guess work! The conundrum is this. You have 1000 coins of similar value. You have to divide the 1000 coins into 10 piles - imagine you have ten plastic cups in which to place them - distributed in such a way that you can make any value between 1 and 1000, inclusive, using as many or as few cups as necessary but without removing coins from cups. What are the values of the ten piles?

The Lovely Sue

Dear Sir,

I write to crave a small space in which to express publicly my apologies to Sue Brickay for doubting her flesh and blood reality. She has written me a most charming letter avowing that she does indeed exist and engages in deep thought about every Enigma puzzle, even when she does not submit an entry.

What better exemplification could there be of Decarte's logic: I think, therefore I exist?

Very contritely,
Shadow Editor (ret)

Hell hath no fury Ed