

# RINGMORE

APRIL 2000

Editor: Geof Dykes 810123

Issue Number 176

# PARISH NEWSLETTER

Guest Editor: Di Collinson

## APRIL DIARY

MONDAYS: Short Mat Bowls Parish Room 7.30pm

WEDNESDAYS: Step Aerobics Parish Room 8.30pm

THURSDAY: Quiz Night Journey's End 9.00pm

FRIDAYS: 14th & 26th Friday Club Parish Room 5.30pm

2nd Mothering Sunday

6th, 7th, 8th 'Bigbury Capers', St Ann's Chapel 8.00pm

8th Beach Clean 10.00am, Ayrmer Cove  
British Legion Coffee Morning, The Manor, 10.30am

15th WI Easter Fair WI Hall 10.00am

18th Parish Council 7.00pm WI Hall

26th Annual Parish M'ting WI Hall 7.30pm

29th Skip in JE Car Park

**DEADLINE Mon 24th April**

### Mobile Library

April

Dates:- 14th & 28th

Ringmore Church

12.05 - 12.30

Challaborough

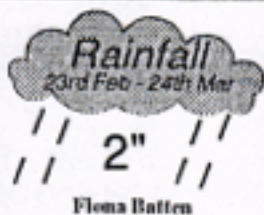
12.35 - 12.45

St Ann's Chapel

3.15 - 3.30

Kingston Fire Station

3.45 - 4.30



Ave/Apl for last 10 years - 2 1/2"  
High - Apl 1992 - 5"  
Low - Apl 1997 - 1/2"

Please send items for inclusion in the Newsletter to:  
The Editor  
Ringmore Parish Newsletter,  
Ringmore Veau, Ringmore, TQ7 4HL,  
or put them in the letter box in the garage door

## THANKYOU...

To everyone who came to the Blue Peter Bring-and-Buy Sale. We raised **£186.20** for premature babies. Once again, **THANKYOU**. We couldn't have done this without your help.

Anouska

Many congratulations to Anouska and her friends. The Bring-and-Buy was a very lively and enjoyable event.

Undoubtedly, there is in existence a modest microchip capable of taking all the contributions to the *Ringmore Newsletter* and, in a few seconds, retyping and arranging them coherently on eight A4 pages. Alas, I have no such device and, after experiencing several dark nights of the soul, feeding the equivalent of an equatorial rain-forest into my printer and reducing every contribution to the kind of microscopic lettering usually found only in the small print of a time-share agreement, I have given way to the temptation to produce a nine-page *Newsletter*. I pray that this wimpish capitulation may be seen by the Real Editor as a tribute to his easy and hitherto-unappreciated genius rather than as a flight of egotism on the part of his stand-in. While on this subject, may I also apologize for the unarresting headings and the alien format and style of much of the *Newsletter*. These were not intentional, but simply the result of profound computer illiteracy and naked desperation.

Notwithstanding, I hope the many interesting and jolly local events scheduled for April will be noted and engaged with. Do not be one jot daunted by the programme for April 8. It should be perfectly possible to make an early appearance at the Beach Clean, sprint up to The Manor for an eleven-o'clock British Legion coffee, toddle gently to the JE to imbibe a regional beverage at the Beer Festival and return home for a complete makeover before setting out for 'Country Capers' in the evening. Cool, real cool, man.

It was a great pleasure, the other day, to hear that Clement Freud (he of 'Just a Minute' and cookery fame) has a horse from Suffolk called 'Dig-up St Edmund'. Smiling at that, I remembered that in Cambridge in the 1950s our small ménage of two, and then three, was customer of a fine butcher whose name was Ernest Pledge, but who was known in the privacy of our household as Solemn Oath. That led me to conjure, in a broadly similar vein of silliness, with some South Hams place names. In case you'd like to savour (or jeer at) them, here they are:

QUEENSPOUND, LITTLE DIG-UP, YOUNGABEER, WESTOFF, KNOCKLESS, BAYFORD, MAKESPRING, CHARITY BAY, ROCKEREXHUME.

Craving their indulgence, and yet concomitantly trustful of the charitable natures of my fellow-citizens,

I remain,

faithfully, for just a few more days,

the Shadow Editor

W.W.W. Dot Kamen



**Julie**  
Fully Qualified



Mobile Hair-stylist

Ladies & Gents  
Competitive Prices  
Ansaphone available

Bigbury-on-Sea  
810634

**PHOTO EXPRESS - Modbury**

Hours of opening

Monday 9.00am - 1.00pm  
to &  
Friday 2.30pm - 6.00pm  
Saturday 9.00am - 1.00pm  
2.30pm - 5.00pm

**MODBURY PHARMACY**

Tel: 830215



**PRE-TEXT**

Graphics Design / Artwork  
Flyers/Posters/Leaflets/Advertisements  
Overhead Foils - Design & Preparation  
Logo Design

All aspects of Desk Top Publishing

GEOF DYKES, RINGMORE VEAN, RINGMORE, TQ7 4HL  
TEL 810123

**Kevin Light**

PLUMBING & HEATING  
CORGI & A.C.O.P. Reg.

Wychbury  
Ringmore Drive  
Bigbury on Sea

Tel 01548 810726

**FOR 'REAL' CHEESE & WINE**

**MACKGILLS**

Handcut Farmhouse English & Continental Cheese

Home-cooked Ham & Salamis

Home-cooked Pies & Cakes etc.

Wine, Beer, Sherry & Cider ...  
and much more

Telephone Enquiries Welcome

**DELICATESSEN**

4 Church Street, Modbury, Devon PL21 0QW  
Telephone: Modbury (01548) 830860

**M and J P**  
Builders

All types of building work  
undertaken

New Buildings

Renovations

20 years experience  
in Building Trade

For FREE Estimates and Advice  
please phone  
810633

**FARE DEALS**

TRAVEL

Quality Service  
Personal Attention

**the Independent Agent  
for Independent People**

Make this the year that  
YOU do something

**different**

From Ballooning to Whale Watching  
You name it ... we will find it

Also, all the usual flights of Fancy.  
Air Fares - Packages - Tailor Made, etc.  
Rail Tours - Short Breaks - Car Hire  
Hotels - Insurance

TEL: 01548 810869

HIGHER MANOR  
RINGMORE  
KINGSBRIDGE  
TQ7 4HU



**TILLY DOWNING BSc POD**

STATE REGISTERED CHIROPODIST

Home visits or in-surgery treatment  
3 years training, very safe and thorough

THE LAURELS, FORE STREET, AVETON GIFFORD  
TEL: 01548 550072

Near the School - opposite the car park

**BIGBURY SHOP & POST OFFICE**

Daily Deliveries - No order too small - Just give us a ring

Bread + Fruit & Veg + Milk & Dairy Products  
Newspapers & Magazines  
Best Back Bacon + Ham + Tongue + Cheese  
any amount out

SHOP  
Daily 8.00am - 4.00pm  
Sunday 9.00am - 1.00pm  
01548 810213

Aune Valley Meat  
Calor Gas & Coal  
John & Margaret Inman

POST OFFICE  
9.00am - 1.00pm  
Monday to Friday  
01548 810213

**T.P.S. SERVICES**  
GARDENER - PAINTER - DECORATOR  
GENERAL HANDYMAN

FOR FREE ESTIMATES  
CONTACT Mr T P SMITH

Modbury (01548) 830961

**HIRAM BOWDEN**



Repairs  
Servicing  
MOT

Cars collected & returned  
Tel: 550129  
Evening 01752 896065



**Jinny McCabe**  
Wedding Florist

Bouquets

Church & Marquee  
Decoration

Windwood Farm  
Ringmore  
Kingsbridge, TQ7 4HU  
Tel: 01548 810538





## April 2000 at All Hallows, Ringmore

*The Minister writes:*

There's not a lot of space this month for a "pastoral letter" from me, as there is much going on, what with Holy Week, Easter and Annual Parochial Church Meetings. So I will confine myself to wishing you all a very profitable Holy week and a God-blessed Easter.

But please don't miss the Annual Meeting of your Church, which is vitally important for the life of our parishes. The election of Churchwardens, Parochial Church Councils and Sidespersons is not a formality that has to be gone through, and the Annual Report is not just for those interested in such things, but an expression of the fact that this is YOUR Church, in which the part you play is crucial.

So I hope to see you there (dates in the diary below)!

Yours in Christian love and fellowship

Derek Matten, Minister

The Church House, Ringmore

Tel: 810565

### DIARY FOR THIS MONTH:

Date:	9 a.m.	11 a.m.	6 p.m.
<b>April 2</b> <i>(Mothering Sunday)</i>	<b>Kingston</b> Holy Communion (ASB) & Children's Church	<b>Ringmore</b> Baptism at Eleven (Jessica Frost)	<b>Bigbury</b> Evening Prayer (BCP)
<b>April 9</b>	<b>Ringmore</b> Holy Communion (ASB)	<b>Bigbury</b> Worship at Eleven	<b>Kingston</b> Evening Prayer (BCP)
<b>April 16</b> <i>(Palm Sunday)</i>	<b>Ringmore</b> Holy Communion (BCP)	<b>Bigbury</b> Communion at Eleven	<b>Kingston</b> Evening Prayer (ASB)
<b>April 18</b> <i>(Tuesday)</i>	7.30 p.m.: J. S. Bach: The St. John Passion with the Stanborough Chorus in Bigbury Parish Church		
<b>April 20</b> <i>(Maundy Thursday)</i>	7.30 p.m. Commemoration of the Lord's Supper in St. James, Kingston		
<b>April 21</b> <i>(Good Friday)</i>	10.30 a.m. 2 p.m.	Family Worship in All Hallows, Ringmore The "One Hour" Service in St. Lawrence, Bigbury	
<b>April 23</b> <i>(Easter Day)</i>	9 a.m. 11 a.m. 6 p.m.	Easter Communion in St. Lawrence, Bigbury Easter Family Communion in St. James, Kingston Festival Evensong in All Hallows, Ringmore	
<b>April 30</b>	10.30 a.m.	United Team Service in St. Andrew, East Allington <i>(No services in Bigbury, Kingston or Ringmore on this Sunday)</i>	

### Annual Vestries and Parochial Church Meetings 2000

<b>Kingston:</b>	<b>Wednesday, April 19</b>	<b>7.30 p.m. in the Church</b>
<b>Bigbury:</b>	<b>Tuesday, April 25</b>	<b>7.30 p.m. in the Church</b>
<b>Ringmore:</b>	<b>Thursday, April 27</b>	<b>7.30 p.m. in the Parish Room</b>



**Modbury Service**

**TAXI**  
Licensed Private Hire

Air, Sea and Rail Connections  
Local and Long Distance

01548 830961

Licensed Public Hire

Air, Sea & Rail Connections

Local and Long Distance

**POST OFFICE STORES**

Daily Deliveries Bigbury-on-Sea 810274

POST OFFICE - GROCERIES - BREAD - DRY CLEANING  
CONFECTIONERY - PHOTOCOPYING - STATIONERY - VIDEOS  
NEWSPAPERS - MILK & CREAM - FRUIT & VEGETABLES  
CREAM BY POST - FRESH LOCAL MEAT - WINES & SPIRITS

Stores open: 9.00am - 5.00pm  
Except: Tuesday 9.00am - 1.00pm  
Sunday 9.00am - Noon

Post Office open 9.00am - 1.00pm  
Monday, Tuesday, Thursday, Friday

Car Park

Mick & Carolyn Hunt

All orders promptly serviced & despatched. Friendly & courteous service

**Nicholas HAIR & BEAUTY**

8 Church Street, Modbury  
South Devon Tel: Modbury 830152  
Ladies' & Men's Hairdressing & Beauty Salon

or at Marine Hotel, Salcombe, South Devon Tel: Salcombe 843370

**DAY OF BEAUTY**

A relaxing and recharging day pampering at the luxurious Marine Hotel; including sauna, swim, solarium, spa bath, full body massage, full Sothys facial. Light lunch in the hotel lounge or restaurant followed by: manicure,

**NIGEL FROST**

B.Sc.(Hons) Optometrist FBCO

Cheyne Court, Modbury  
next to car park

01548 830944

Open Saturday Morning

Contact Lenses, Spectacles, Accessories  
Complete Eye Examination

**Rob Batten Car Sales**

Quality cars to suit all pockets  
My prices can't be matched

Phone for a chat  
810680

Wedding Bouquets

Funeral Tributes

**"Rosemary"**

Flowers for all occasions

1 Broad Street  
Modbury  
Tel 01548 830048

**Kingston Klobber**

For  
Waistcoats  
Bow Ties  
and many of your  
sewing needs

Kingston Klobber  
Home Farm  
Kingston  
Kingsbridge TQ7 4PU

**Kim Watkins**  
01548 810361

**A M KING & SONS**  
Registered Builders

uPVC Windows & Fascias  
Extensions/Conversions  
Internal & External  
Decorations  
New Kitchen  
or Bathroom

810570

Prop: Gina & Gordon Phillips

Residential Care Home

**KORNILOFF**

Overlooking Burgh Island

A Family-run Home NVQ trained staff

24 hour Care, Home cooking, Special diets catered for,  
Stair Lift, Hairdresser, Chiropodist, Bath Hoist if needed  
Large Single, Double or Twin rooms by choice. Some en-suite

Your Dignity and Privacy is paramount  
Transport can be provided by arrangement  
Devon County Council registered

Warren Road, Bigbury-on-Sea, Devon Tq7 4AZ  
Telephone: 01548 810222

Hotel for the Elderly

**R & H PICKLES**

Modbury  
830412  
FOR ALL

DIY SUPPLIES  
CLOTHING  
FOOTWEAR  
OIL  
CAMPING GAZ  
15kg & 19kg  
GAS BOTTLES

**DELIVERY THURSDAY DELIVERY**

**PIPS** 830288

FRESH  
FRUIT  
&  
VEGETABLES

EVERY TIME YOU  
COME TO  
MODBURY

Canada Life

For a discreet and confidential local service on all financial matters that are important to you, please feel free to contact me.

**Mike Wynne-Powell**  
Senior Financial Consultant  
Company Representative of The Canada Life Marketing Group in relation to Life Assurance, Pensions, Unit Trusts and Unit Trust FFP's only

Centra Court  
73 Upper Street  
Exmouth  
EX4 6AA

Tel: 01 753 289922  
476673  
Fax: 01 753 281319  
Home: 01548 810407

The Canada Life Marketing Group member of The Canada Life Assurance Company, The Canada Life Assurance Company of Great Britain Limited, Canada Life Management (UK) Limited (regulated by FSA), A Besky Life Assurance Company Limited and Liberty International Assurance Limited. All companies are regulated by the Financial Services Authority.



## TEN YEARS AGO . . .

At Challaborough, the clear-up after the January storm was nearing completion in time for the Summer. 30 caravans were replaced, the derelict Dolphin Cafe was demolished as was the Beach Cafe. 600 trees, comprising 8 varieties, were planted throughout the site.

The trouble caused by the movement of caravans to and from Challaborough was highlighted. These vehicles were entirely unsuited to the route through Ringmore via St Ann's Chapel and often were the cause of delays of 2 hours or more as they attempted the almost impossible.

*Because of the dedicated access road created from Folly Hill, Bigbury on Sea to Challaborough, these problems rarely occur in Ringmore these days.*

### RINGMORE HISTORICAL SOCIETY

**By special request:** on Wednesday 17 May there will be a **Town Walk of Modbury** conducted by Phil Andrews. Please meet at 2pm by the Tourist Office in Modbury car park. The walk will take approximately one-and-a-half hours.

**INTER-PARISH QUIZ: ROUND 2**  
Held at the JE on 22.3.2000  
After 2 rounds of general knowledge and music, Bigbury took a lead of 2 points. An individual round of pot luck, followed by a team round of wine and drink, put Bigbury 8 points ahead. After 2 more rounds, Bigbury increased their lead by 1 point to 9. Ringmore held their ground for 2 more rounds and gained 2 points for recognizing famous pairs of eyes. But does Tony Blair really resemble Angela Rippon? The break was welcome, as was the splendid food provided by Grahame and Debbie. Ringmore revealed they knew nothing about sport and Bigbury's lead was increased to 11. Instructions in 8 languages on the side of a toaster had to be identified and knowledge of the countryside reduced Ringmore's deficit to 10. Both teams knew their soap operas, radio frequencies and dog breeds, but Ringmore pulled up to just 6 points in arrears. Idioms, history and antiques led to the last pot-luck round. Final score: Bigbury 184, Ringmore 103. Oh well, there's always next year. Well done, Bigbury. Good luck in the semi-final. Robbie McCarthy

## Journey's End Journal

March has come and gone in a blur, with warmer weather, blue skies and strange, green beer at the JE. Yes, we managed to find the only brewer in the West Country who brews a genuine, green beer! After initial reservations - who wouldn't have them? - it was found to be very pleasant, and just what was needed to make our St Patrick's Night celebration that extra bit special, along with a superb Irish Theme menu and great music from the Park Bench Aristocrats. Thanks to all of you who sent in or brought along limericks. There was quite a collection - not all repeatable... The Dixieland Jazz Night, with Louisiana Soul Food, was well-attended, mainly by Kingstonites, and enjoyed by everyone.

Well, enough of March, and on to April. Bookings are now being taken for Mothering Sunday on 2 April. The menu is available soon. Our first Beer festival of the millennium starts this month, Thursday, 6 April, with 'A Taste of the West', a chance for you to sample some of twenty beers from all over the region. To give you extra sampling time we will be open all day on Friday 7th and Saturday 8th of April.

Our first live music of the month is from Fiona on Friday 7 April. Hanging Johnny and the Shanty Crew sing us out on Friday 28 April.

Another fine raft of Quiz Masters is lined up to bring the quiz season to a close at the end



Tel 01548 810205

Mon - Sat 11.30am - 3.00pm  
6.30pm - 11.00pm

Friday: Early Doors Club open 6.00pm

Food: 12.00 - 2.00 & 7.00 - 9.00

Sun Noon - 10.30pm

Food: 12.00 - 2.00 & 6.30 - 9.00

of April and we are now open seven days a week again for the coming season.

If you fancy yourself as a Toulouse Lautrec or a Van Gogh, come and get some inspiration from the JE. We are selling absinthe, the famous liqueur loved by Paris Bohemian society, and endorsed by Oscar Wilde, at 70% proof; though we don't recommend cutting off an ear in order to enjoy it.

The Inter-Parish Quiz, fully reported elsewhere, took place at the JE on 22 March. It was an exciting and very close contest in which Ringmore fought for their lives and lost by only one point. Well done, Bigbury, and commiserations to Ringmore!

A Happy Easter to all our customers.  
Debbie and Grahame

### THE BIGBURY PLAYERS

PROUDLY PRESENT

### 'COUNTRY CAPERS'

at

THE MEMORIAL HALL, ST ANN'S CHAPEL

ON

Thurs 6th/Fri 7th/ Sat 8th APRIL 8.00p

TICKETS ON SALE FROM MARCH 23

at

LOCAL SHOPS

ADULTS £3.00 CHILDREN £1.50

COME AND ENJOY A FUN-FILLED EVENING!

## Ringmore WI EASTER FAIR

in the WI Hall  
Saturday April 15th  
at 10.30am

Entrance 50p  
(includes refreshments)

Cakes - Raffle  
Bring and Buy  
Easter Egg Hunt  
Character Portraits  
by Tim Skegg  
Quizzes - and lots more



## T.P.S. SERVICES

GARDENER  
PAINTER  
DECORATOR

GENERAL  
HANDYMAN

FOR FREE ESTIMATES CONTACT

**Mr T P Smith**

Modbury (01548) 830961

## COLLECTORS CHOICE

Antiques & Collectibles

Variety of antiques, valve radios,  
fountain pens, clocks.  
Extensive range of Art Deco items.  
Old and interesting items purchased

For that unusual gift  
Pay us a visit

27 Church St., Modbury Tel 01548 831111



OPPOSITE  
COUNTRY FINE FURNITURE

## THE BAKERY MODBURY

Bakers And Grocers  
Farmhouse Bread  
Hovis - Wholemeal



Take-away Snacks  
Sandwiches

01548 830216

## SHEPPARDS

Chartered Accountants



Your Local Accountants

Call Ian or Yvonne Sheppard  
on (01548) 810341 or (01752) 220333  
fax (01752) 221742

Free initial interview & Free Parking

Atlantic Building, Queen Anne's Battery  
Plymouth PL4 0LP  
Full Accountancy & Taxation Service

## Learn to Drive with Trev Drive In School of Motoring

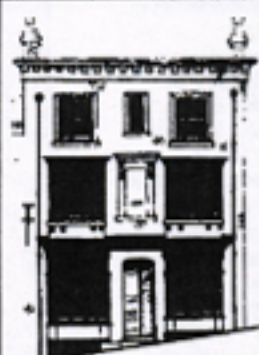
Fully Qualified  
Department of Transport  
Approved Driving Instructor  
Pass Plus Registered

Quality patient tuition  
Door-to-door service  
Nervous Pupil Specialist

Discounts available for pre-paid bookings

£14 an hour  
£130 for 10 hours  
£240 for 20 hours

Telephone 01752 336464 (Daytime)  
Telephone 01548 810715 (Evening)



## DEVONSHIRE FINE ART

Antique Watercolours, Oil Paintings,  
Drawings, Maps and Prints.

Local Watercolours & Prints.

Quality Picture Framing Service.

9 Church Street, Modbury,  
Devon PL21 0QW  
Telephone/Fax. (01548) 830872.

## ADVERTISING SPACE

IS  
ALWAYS  
AVAILABLE

This size for £1 per month  
please ring

810123

# HOLYWELL STORES

(Opp: Pickwick Inn)

## St Ann's Chapel

MONDAY to SATURDAY 7.30AM - 6.00PM  
SUNDAY 8.00AM - 5.00PM  
(Open Daily 7.30am - 8.00pm July & August)

YOUR LOCAL STOCKIST FOR

CALOR GAS - AUNE VALLEY MEAT - RIVERFORD ORGANIC VEGETABLES  
LANGAGE FARM CREAM & ICE CREAM

PLUS

FRESH DAILY BREAD - FRUIT & VEG. - NEWSPAPERS - OFF-LICENCE  
VIDEOS - COAL & LOGS - GROCERIES - FROZEN FOOD - DAIRY PRODUCE  
SEASONAL GOODS

MULTI-PURPOSE COMPOST

80 Litres 3.99 - 40 Litres £1.99

Grow Bags 99p

DELIVERY AVAILABLE ON ALL ORDERS OVER £10  
For more details please telephone 810308



## RINGMORE PARISH COUNCIL

Meeting Tuesday 21 March

**Present:** 6 Councillors, the Clerk, District Councillor B. Carson, Neighbourhood Watch D. Young, Millennium Committee G. Eddy and one member of the public.

**Matters Arising from previous Meeting:** soil pipe in Rectory Lane. The Clerk has written to SW. Water and is awaiting a reply. The Council Chairman has inspected the pipe and feels it is not in a dangerous state. **Town Well and Green:** Restoration of the well is to be carried out and a quotation for the work was accepted from Alan King and Sons. Advice has been sought concerning the improvement of steps on the Green, as they have become a safety issue. Cllr Muller will follow this through, ensuring that any work undertaken will be in keeping with the area. **Churchyard:** Confirmation has now been received from the Parochial Church Council that the total cost of the removing and re-siting of gravestones to make additional space is £1050. If this is not done, the Parish Council (not the PCC) has a responsibility to provide additional new burial ground. It was therefore unanimously agreed to support the PCC with half the costs as requested. **Tree planting at Crossways:** a reply is awaited from South Hams District Council.

**Matters raised by Parishioners:** Neighbourhood Watch, nothing to report. Dumping at Crossways: a complaint has been received about the dumping of rubbish (particularly garden waste) on the grass area at Crossways. The Clerk was asked to write to SHDC.

**Beach Clean, Saturday 8 April,** 10am at Aymer Cove. Bring your rubber gloves and plastic bin liner. Simon Garner of the NT will remove the bags when filled.

**District Cllr B. Carson:** Mr Carson felt that the increase in Council Tax bills had been kept to a minimum and that much hard work had been put in by those setting the rate. Mr Carson confirmed that the current car parking rates at Bigbury-on-Sea are winter rates and that they will change to the summer rates in due course. Quayside Leisure have increased charges, but there is a monthly subscription that includes free car parking, usable even when not using the Leisure Centre.

**Footpaths:** This year's grant of £240 for footpath maintenance has been received. Cllr Muller will look next at the path from the church to Noddon Mill and beyond. He is soon to meet representatives from Coast and Countryside, the organization that is providing a new stile and kissing-gate for that stretch of path. They will see the new wooden walkway in Darlie Lane and will look also at the Town Well. The Council agreed that a contribution of £100 would be made to the upkeep of the footpaths

undertaken by the National Trust, as 70% of the paths in the parish are maintained by the NT.

**Planning:** alterations to Rosie's Barn approved.

**Millennium:** Guy Eddy advised that the planting of over 1500 trees is now completed. Logs for the seats are being moved this week by the NT with the help of Dudley Hext. When in place they will be carved into seats. No further news on funding for the church clock.

**Any Other Business:** Dist. Cllr Carson asked if the sign banning dogs from Chalfborough beach was effective. As no complaints have been received it was agreed that Councillors would observe through the summer to see if the signs are being ignored.

**Skip:** in the JE car park, by kind permission of Grahame and Debbie, on 29 April.

**The Parish Council Notice Board** is in need of painting, and Cllr Freeman has kindly agreed to undertake this task.

**Next meeting Tuesday 11 April 7.30pm WI Hall.**

Carol Allan

### FOLLETT

We should like to introduce ourselves as the new residents of Folletts.

Christel was born in rural Hesse, Germany, and later moved to the Ruhr. She has lived in England for 30 years, working mainly for Social Services in the Midlands.

Peter's father was based at RAF Bolt Head during the war and thereafter brought his family to Devon for holidays.

Peter has run a self-catering property in Salcombe for 20 years, whilst living and working in the Midlands.

Then there is our cat, Max, a loving, indoor cat with a physical beauty reminiscent of that of Tigger (late of the JE) whom we met while house-hunting.

We are looking forward to finding new challenges in this inspirational setting.

Christel Poljose and Peter Sinton

### A HINT FOR READERS IN THE AGE GROUP 5-15 YEARS.....

It may be to your advantage to gather a little information about Ragwort, a yellow wild flower. Come the early summer, you will realize why!

## THE YEW TREE

The nationwide enthusiasm to commemorate the year 2000 by planting trees has reawakened interest in that most English of trees, *taxus baccata*, the yew.

The yew is a magnificent and sombre tree, seen mainly in graveyards. There it provides a protective canopy for mourners and graves, imparts a wonderful dignity to the scene and embodies profound meanings concerning both mortality and eternity.

Perhaps the yew's most impressive characteristic is its longevity. Some of the yews in southern England are estimated to be between 2000 and 9000 years old. These estimates cannot be precise because after about 400 or 500 years of growth a yew begins to lose its heartwood and its age can no longer be estimated by ring-counts. A 300-year-old tree growing in optimum conditions might well have a girth of 12 feet.

The two ancient trees in the All Hallows graveyard, although not as massive as yews on more sheltered sites, are probably coeval with the church. But it is possible that they are even older than the church since many ancient Druidic and Celtic burial grounds were planted with yews and were later consecrated for Christian use. All yews are difficult to date precisely because their growth habits are highly variable. Some appear to 'rest' for long periods of time and then start into observable growth again.

Yew wood is extremely hard and it is said that it lasts longer than iron. In his *Flora Britannica* Richard Mabey tells us that there is in existence a 250,000-year-old yew-tree spear, found at Clacton in Essex. It is the world's oldest known wooden artefact. Yew wood was also used for making longbows, although English yew was not in fact the best wood for this purpose and it is thought that Spanish and Italian yew woods were often imported for the longbows. In Derbyshire, near Ambergate, there is a yew in the cavity of which a family once lived. One of its boughs was hollowed out by a member of the family to make a cradle that subsequently - it is said - became the inspiration for the lullaby 'Rock-a-bye Baby'.

A comparatively recent use for yew that is making it commercially valuable is in medicine. An alkaloid called taxol, apparently efficacious in the treatment of ovarian cancer, is present in the tree. Clippings and foliage are being bought by the drug companies.

The Conservation Foundation, the organization that initiated a scheme to replace lost elm trees, has been running a project called Yews for the Millennium. It provides parishes with young rooted cuttings taken from yew trees thought to be between 2000 and 4000 years old. Several varieties have been propagated to produce a very large number of cuttings for which over 6000 parishes, communities and organizations have applied. Most popular nowadays, Mabey reports, is the Irish yew, whose branches 'sweep evenly upwards, as if they had been bound into a bundle' and which, he says, are mostly descendants of two trees found on a limestone crag in Fermanagh in the 1760s. These Irish yews are tidier, more manageable specimens, able to be schooled into neat avenues or clipped into symmetrical, individual cones: rather different from the gnarled, mysterious, sprawling giants that have bestowed a special character on so many English and Welsh churchyards, including Ringmore's.

### PROPOSED MOTORWAY TO PASS THROUGH RINGMORE .....

Actually, no. But it got your attention! There are matters of concern and interest to all in the parish, the chance to look at the past and future years, to raise questions and receive answers on local affairs, at

### THE ANNUAL PARISH MEETING WI HALL, 26 APRIL, 7.30pm

#### GUEST SPEAKERS

Sir Simon Day Devon CC

Mr Brian Carson S.Hams DC

Mr Simon Garner National Trust

A Police Sergeant TBA

PLEASE TRY TO COME. THERE WILL BE SOMETHING OF INTEREST TO EVERYONE  
Rob Batten Ringmore Parish Council





FREE HOUSE

# The Royal Oak Bigbury

Telephone: (01548) 810313



## APRIL DIARY

Our usual weekly events continue apace:-

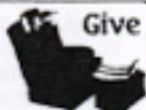
Monday = Euchre (Not Easter Monday),

Tuesday = 'Folk at The Oak' (fortnightly)

Wednesday = Pool (players required). Friday = League Darts.

Sunday = Quiz and crumpets by the fire

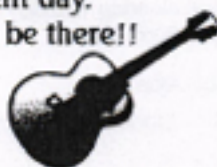
Sun 2nd April - is our Mother's Day special lunchtime menu. Look out for further details. Give Mother a break and book your table early to avoid disappointment



Fri 7th April - 60's Chart Group 'The Silkie' playing a wide range of music from the 60's through to the present day.

This always proves to be an excellent evening, so be there!!

From 8.30pm - Table bookings are advisable.



Easter Sunday - 23rd April - We will be offering a special menu for Easter Sunday - please telephone for further information and to book a table.



Outside bars and parties - We specialise in outside bars and small parties. Please telephone to discuss your requirements.

### THANKYOU

On behalf of Ringmore WI, I warmly thank the Millennium Committee for their generosity in giving us the proceeds of the Coffee Morning to put towards improvements to the WI Hall.

The grand sum of £112 was raised, and we are very grateful to everyone for their support.

Jackie Tagent  
President. Ringmore WI

### OF THE TELEPHONE...

"...while my partners and I enjoyed the demonstration of your invention, we have concluded that, although it is an interesting novelty, the telephone has no commercial application."

J.Pierpoint Morgan, in a letter to Alexander Graham Bell

### ROYAL BRITISH LEGION WOMEN'S SECTION

Saturday 8 April at 10.30AM

COFFEE MORNING  
AT THE MANOR, RINGMORE  
BRING-AND-BUY — RAFFLES etc.

PLEASE COME

### ROYAL BRITISH LEGION

#### CALLING ALL EX-SERVICEMEN AND WOMEN

Did you serve in any of the Armed services? If you did, why not join THE ROYAL BRITISH LEGION?

The Bigbury, Ringmore and Kingston Branch of the RBL holds its monthly meetings in the convivial atmosphere of the Journey's End at Ringmore. There is a monthly draw of the '100 Club'. Branch visits are planned for the summer season to places of interest such as the RN Museum and Dockyard at Devonport and BRNC at Dartmouth. The Branch looks forward to welcoming new and existing members.

For further information, call David Young (810389) or Peter Street (810334)

Endgame

## MARCH SOLUTION

$$\begin{array}{r} 81729 \\ 678912 \\ + 217669 \\ \hline 978310 \end{array}$$

Some of us found this competition EXTREMELY difficult; or were we just unlucky in getting so many times to the penultimate column only to find it wouldn't come out right? All will be revealed when the Real Editor returns, and I am leaving him to allocate points to those who did not get it right but made valiant attempts.

Much praise is due to some new and very keen contestants, (who nevertheless failed to get the answer), among them Al Terego, Nick Naim and Nordie Ploome. NOTHING from Sue B., (I always knew she was a figment of the Ed's imagination), and in fact only one wonderfully numerate and intellectually supreme contestant got it right: the matchless MATCHMAN. Su da Nim and Taurus command profound admiration for brilliant presentations.

Shadow Editor

## APRIL

Divide the grid below into four equal, matching shapes each containing the required letters to form the same opposite word in each quarter. Is it easy or difficult? A general awareness will help!

A	I	S	R	S	A
T	A	T	U	A	T
S	R	A	A	L	L
I	S	A	A	U	R
L	A	I	I	A	L
A	U	T	U	R	A

### RINGMORE W.I.

The speaker at the March meeting was Mr Mounse of SW Water. He gave an interesting account of the work, aspirations and achievements that have altered the company's whole perception of water supply and treatment.

Our President, Mrs Jackie Tagent, outlined some of the projected fund-raising events to take place in the near future.

**NEXT MEETING: 13 APRIL**, when there will be a talk and demonstration of hairdressing by Julie Linzell. **DON'T MISS IT!**

**YOU MAY BE A GUINEA-PIG FOR THE LATEST STYLES!**

Press Secretary

Naomi Warne



## BIRDWATCH:

### the Nocturnal Plover

Readers of the more serious ornithological publications may recently have noticed two or three reports that are surely of great interest to all of us in Ringmore. It seems that a migrating group (properly called 'a swoop') of the north European Nocturnal Plover (*squatarola stygius*) is heading our way. It is estimated that the swoop, currently approaching the Channel coastline, will settle and breed in an appropriate habitat between the Avon and the Erme. Apparently, a cove of the size and geological formation of Aymer, and a valley hinterland such as is provided by Ringmore, afford the optimum conditions for the breeding and survival of this rare and interesting species.

How shall we recognize the new arrival, should its instincts lead it to adopt Ringmore as its habitat? Recorded observations put *squatarola stygius* at 19.5cm in length with upperparts of light grey except for an ochraceous buff chest band and a white wing flash, the latter visible only when the bird is in flight. Its eyelids are a distinct red, its legs pinkish. Nidification: compact nest, well-secreted in trees and large bushes, roughly at eaves level. More idiosyncratically, the cock bird has a pronouncedly curved, black bill with a remarkable 'chisel' formation at its tip. (Local names in northern Europe include 'Whisk-smasher', 'Stone-chipper', 'Clack-Clack Bird', etc.) *Squatarola stygius* is a protected species, but there are two (at least) causes for concern: if it settles with us. The first cause for concern, should the bird establish itself in Ringmore, is the inevitable arrival of armies of twitchers, with all the attendant problems to do with parking, breakdown of infrastructure, pollution, accommodation, and law and order. These difficulties are too well-known to require elaboration here and I leave readers to think through the details for themselves. The second cause for concern arises from a particular propensity of the Nocturnal Plover itself, namely, its well-documented and incorrigible dawn chorus behaviour. We are told that as the very first glimmers of dawn begin to temper the night sky, these birds in their eaves-high nests are attracted to the upper windows of houses.

Together, cock and hen alight on bedroom windowsills and while the cock, using the full force of his magnificent chisel bill, strikes the glass rapidly, repeatedly and imperiously (the noise has been likened to sudden machine-gun fire), the hen bird perches at his side emitting the baleful and prolonged squawks characteristic of this remarkable species.

Needless to say, the effect on human rest is disastrous, with knock-on

consequences that have resulted in the breakdown of marriages and the disintegration of social intercourse in previously well-knit communities.

Any one interested to learn more may refer to the in-depth analysis

'*Squatarola stygius* Syndrome: A Rural Phenomenon' by Dr Harzov Charlatan-Meister, published in the *Undergrundsnedgang Journal of Pseudopsychiatry*, Issue no.15, March 1999, pp.23-41.

## THE MILLENNIUM

### CONTINUED

1511 trees have been planted, all in view from the footpaths. A giant sequoia is planted near the Ringmore - Kingston boundary, near the path that runs past Belle Vue. Seven pines are planted on Haven land near the Ringmore to Folly Hill path. More than 1300 trees are planted on the Devon bank running towards the coast from the woods above Lower Manor Farm. This hedge is a mix of ash, hazel, blackthorn, hawthorn, spindle and dogrose. Finally, 111 trees have been planted on Mr Tucker's land near the Ringmore to Bigbury path: a mix of surplus trees from the Devon bank plus 5 crabapples, 3 damsons and 3 conifers. A few trees of each sort have been heeled-in in case of failure. A huge debt of gratitude is owed to those parishioners who have given time and effort to make this possible. In years to come, people will appreciate this way of making a statement for the new millennium.

The tree trunks for the log seats are now in position, one at Toby's Point, one on Smugglers' path.

The Parish Map has had the Coast and Countryside dialogue added to it and will soon be fixed to the bus shelter.

There is no progress to report on the provision of a church clock. The 18 March Coffee Morning, held as a thankyou to all who had helped with millennium projects was preceded by a visit to the Devon bank planting.

THE NEXT OPEN MEETING IS ON 11 APRIL 2000 AT 7.30PM IN THE WI HALL.

Guy Eddy

### TIME TO TAKE

### F.I.V.E.

In Bigbury Parish Church  
Saturday 13 May at 7.30pm

With five of the most talented young singers in Britain.

More details next month, but please book the date now.

## J.S.Bach:

### St John Passion

TUESDAY APRIL 18TH

AT 7.30PM



ST LAWRENCE'S CHURCH,  
BIGBURY

£4 (child £2) at the door  
or £3.50 in advance

### BIGBURY FAYRE

On behalf of Bigbury Fayre we wish everyone a Happy New Millennium. The elements must have been against us again, as we were unable to sing our carols on the Green: we had to retire to the Royak Oak. Thankyou to Bryan and Angie for accommodating us. The weather also prevented our musicians from coming, so we'd like to thank Matthew Holland, who stepped in to lead us in the carol singing, and his son, Tony, who played the recorder. In the second half, Kate Carson and Denise Lethbridge joined in, playing the flute and guitar. A big thankyou to them, to the hardy ones who ventured out on such a night, to Allan who supplied the lights for our tree, and to Elaine and Jeremy for the use of their electricity.

We are very sorry we had to cancel New Year's Eve: we did not manage to sell enough tickets. But many thanks to those who did buy tickets, and to Bryan and Angie who took over the hall instead. We did go to the hall that afternoon and, on behalf of the Fayre, presented each member of the Youth Club with a Millennium key ring.

## NEIGHBOURHOOD WATCH

There will be a South Hams Police Liaison Meeting at the Assembly Hall, Cliff House, Cliff Rd, Salcombe, on Monday 17 April at 7.30pm. Anyone wishing to attend, please contact David Young (810389).