

# RINGMORE

NOVEMBER 1999

Editor: Geof Dykes 810123

Issue Number 171

## PARISH NEWSLETTER

### NOVEMBER DIARY

MONDAYS: Short Mat Bowls Parish Room 7.30pm

WEDNESDAYS: Step Aerobics Parish Room 8.30pm

THURSDAY: Quiz Night Journey's End 9.00pm

FRIDAYS: 5th & 19th Friday Club Parish Room 5.30pm

3rd Ringmore Historical Society AGM WI Hall 7.30pm  
5th Site meeting for Millennium Tree Planting 10.30am  
6th RHS Open Meeting Parish Room 10.15am  
9th Millennium Open Meeting 7.30pm WI Hall  
11th Two-minute silence 11.00am RBL Standard at Bigbury  
12th RBL Auction Journey's End 8.00pm  
13th RBL Coffee Morning Sedgewell Sands 10.30am  
14th RBL Remembrance Service 10.50am Bigbury  
15th RBL Whist Drive WI Hall 7.30pm  
23rd Parish Council 7.00pm WI Hall

December

4th AllHallows Christmas Fayre Parish Room 10.30am

**DEADLINE Thurs 25th Nov**

### Mobile Library

November

Dates:- 12th & 26th

Ringmore Church

12.05 - 12.30

Challaborough

12.35 - 12.45

St Ann's Chapel

3.15 - 3.30

Kingston Fire Station

3.45 - 4.30



Please send items for inclusion in the Newsletter to:

The Editor

Ringmore Parish Newsletter,

Ringmore Veau, Ringmore, TQ7 4HL

or put them in the letter box in the garage door

### THANK YOU

I am so grateful to those who arranged my farewell church service. It was one of the really important things in my long life that will cheer me whenever I think of it.

I am so touched and grateful too for all the cards and good wishes that I have received on my move. I am afraid I cannot reply to them all individually but I hope that all the senders will come to see me one day.

Lastly, I love my picture!

Douglas

*October was an ambivalent month. Was it finally the end of summer or the beginning of winter? Which ever, there is plenty to review and much to anticipate as 'golden October declines into sombre November'.*

*Last month's Treasure Hunt was poorly attended but it was a great success for those who did take part. Some said they had walked the streets for years, in a manner of speaking, and had not realised there was so much to see around them.*

*The Short Mat Bowls Club has passed a milestone in its development in acquiring its own new Bowls Mats. They are to be congratulated on raising the four-figure sum needed in less than two years existence, due in large part to the efforts of Gordon Allan. New members welcome!*

*Tickets for the SMB Grown-ups' Children's Party on Saturday 11th December are going well. Do not leave it until the last minute or you might be disappointed.*

*Now is the time to think of Christmas Greetings. If you wish to place a greeting in the Newsletter for the princely sum of £1 please let the editor know as soon as possible.*

*A gentle reminder from the Historical Society - if you think a Village Map would make a suitable Christmas present they can be obtained in a postal tube for £5 and posted for 66p.*

*Elsewhere are some pictures of past residents who have featured recently, all for sad reasons of a varying degree. They were taken by Mike Wynne-Powell and selected from his extensive pictorial library.*

**Modbury Service**

**TAXI**

**24 Hour Availability**

Air, Sea & Rail Connections

Local and Long Distance

01548 830961

Licensed Public Hire



**POST OFFICE STORES**

Daily Deliveries Bigbury-on-Sea 810274

**POST OFFICE - GROCERIES - BREAD - DRY CLEANING**

**CONFECTIONERY - PHOTOCOPIING - STATIONERY - VIDEOS**

**NEWSPAPERS - MILK & CREAM - FRUIT & VEGETABLES**

**CREAM BY POST - FRESH LOCAL MEAT - WINES & SPIRITS**

Stores open: 9.00am - 5.00pm  
 Except: Tuesday 9.00am - 1.00pm  
 Sunday 9.00am - Noon  
 Post Office open 9.00am - 1.00pm  
 Monday, Tuesday, Thursday, Friday

Car Park

Mick & Carolyn Hunt

All orders promptly serviced & despatched Friendly & courteous service



**Nicholas HAIR & BEAUTY**

8 Church Street, Modbury  
 South Devon Tel: Modbury 830152  
 Ladies' & Men's Hairdressing & Beauty Salon

or at Marine Hotel, Salcombe, South Devon Tel: Salcombe 843370

**DAY OF BEAUTY**

A relaxing and recharging day pampering at the luxurious Marine Hotel, including sauna, swim, solarium, spa bath, full body massage, full Sothys facial. Light lunch in the hotel lounge or restaurant followed by: manicure, pedicure, make-up, shampoo, and blow dry or shampoo and set

**NIGEL FROST**

B.Sc.(Hons) Optometrist FBCO

Cheyne Court, Modbury  
 next to car park

01548 830944

Open Saturday Morning

Contact Lenses, Spectacles, Accessories  
 Complete Eye Examination

**Rob Batten Car Sales**

Quality cars to suit all pockets  
 My prices can't be matched

Phone for a chat  
 810680



**A M KING & SONS**

Registered Builders

uPVC Windows & Fascias  
 Extensions/Conversions  
 Internal & External Decorations  
 New Kitchen or Bathroom

810570



Wedding Bouquets

Funeral Tributes

**"Rosemary"**

Flowers for all occasions

1 Broad Street  
 Modbury  
 Tel 01548 830048



**DH & CS WILKINSON**  
 MASTER BUTCHER

WE ARE PROUD TO SELL

**ENGLISH BEEF - LAMB - PORK**

**POULTRY**

**SEAFOOD**

**FRESH PASTA**

Deliveries

6 CHURCH ST., MODBURY Tel 830240



Prop: Mrs Jean Drinkwater

**KORNILOFF**

Residential Care Home for the Elderly

24 hour Professional Care in a Family Atmosphere  
 Long and Short Stay  
 Holiday Relief & Convalescence  
 Single and Double Rooms all with Sea Views  
 Fully Accredited by Devon Social Services  
 Warren Road, Bigbury-on-Sea, Devon  
 Telephone: 01548 810222

**R & H PICKLES**

Modbury 830412  
 FOR ALL

**DIY SUPPLIES**

**CLOTHING**

**FOOTWEAR**

**OIL**

**CAMPING GAZ**  
 15kg & 19kg


**GAS BOTTLES**

**DELIVERY THURSDAY DELIVERY**

**PIPS** 830288

FRESH **FRUIT & VEGETABLES**

EVERY TIME YOU COME TO MODBURY



For a discreet and confidential local service, on all financial matters that are important to you, please feel free to contact me.

**Mike Wynne-Powell**  
 Senior Financial Consultant

Company Representative of the Canada Life Marketing Group in relation to Life Assurance, Pensions, Unit Trusts and Unit Trust PISPs only.

**Canada Life**

The Canada Life Assurance Company  
 3 Endurance House, Parkway Court, Longbridge Road, Plymouth PL6 8LR  
 Telephone: 01752 673673 Fax: 01752 251379 Home: 01548 810407

The Canada Life Marketing Group consists of The Canada Life Assurance Company, The Canada Life Insurance Company of Great Britain Limited, Canada Life Investments (U.K.) Limited registered for SIFIS, Canada Life Insurance Company Limited, and other insurance subsidiaries Limited. All companies are regulated by the Prudential Supervision Authority.



# Parish Church of All Hallows, Ringmore

*The Minister writes:*

From this vantage point of mid- to late October, November looks like being a quieter month than its predecessors; but let not these impressions deceive: it is but the lull before the storm. That will be heralded by the Christmas fairs of all three of our village church communities, and will reach full gale force by the time the Millennium begins to turn. So be warned.....

October was a happy month, with jolly Harvest Festivals and meals and a most cheerful (and a bit tearful!) farewell to Sir Douglas Hall. May I offer my heartfelt thanks to all who worked so hard – in many ways – to make these events what we wished them to be: a coming together of people in our communities to thank God and enjoy the life He gives us. Without all this hard work, they would only have been half so good. Thank you all very much indeed.

Now for the:

## DIARY FOR THIS MONTH:

Date:	9 a.m.	11 a.m.	6 p.m.
November 7	Kingston Holy Communion (ASB) & Children's Church	Ringmore Worship at Eleven	Bigbury Evening Prayer (BCP)
November 14	Ringmore Holy Communion (ASB)	Bigbury <u>10.50 a.m.</u> Remembrance Sunday Service	Kingston Evening Prayer (BCP)
November 20 <i>(Saturday)</i>	10.30 a. m. Bigbury's Church Christmas Bazaar in the Memorial Hall		
November 21	Bigbury Holy Communion (ASB)	Kingston Worship at Eleven	Ringmore Evening Prayer (BCP)
November 27 <i>(Saturday)</i>	10.30 a. m. Kingston's Church Christmas Bazaar in the Reading Room		
November 28 <i>(Advent Sunday)</i>	Ringmore Holy Communion (BCP)	Bigbury Communion at Eleven	Kingston Evening Prayer (ASB)
December 4 <i>(Saturday)</i>	10.30 a. m. Ringmore's Church Christmas Fayre in the Parish Room		
December 5	Kingston Holy Communion (ASB) & Children's Church	Ringmore Worship at Eleven	Bigbury Evening Prayer (BCP)

Sincerely yours,

Derek Matten, Minister

The Church House, Ringmore

Tel: 810565

## T.P.S. SERVICES

GARDENER  
PAINTER  
DECORATOR

GENERAL  
HANDYMAN

FOR FREE ESTIMATES CONTACT

**Mr T P Smith**

Modbury (01548) 830961

## COLLECTORS CHOICE

Antiques  
&  
Collectibles

Your old and interesting  
items bought for cash

12 Church St., Modbury



OPPOSITE  
CONTEXT ART GALLERY

## THE BAKERY MODBURY

Bakers And Grocers  
Farmhouse Bread  
Hovis - Wholemeal



Take-away Snacks  
Sandwiches

01548 830216

## CONTEXT

Picture Framing  
Gallery

Prints  
Etchings  
Limited Editions  
Antique Water Colours

Embroidery  
Stretched & Framed

Browsers Welcome

9 Church St., Modbury  
830872

## SHEPPARDS

Chartered Accountants



Your Local Accountants

Call Ian or Yvonne Sheppard  
on (01548) 810341 or (01752) 220333  
fax (01752) 221742

Free initial interview & Free Parking

Atlantic Building, Queen Anne's Battery  
Plymouth PL4 0LP  
Full Accountancy & Taxation Service

## Learn to Drive with Trev Drive In School of Motoring

Fully qualified Department of Transport  
Approved Driving Instructor Pass Plus Registered

Quality patient tuition - Door to door service  
Nervous pupil specialist

Discounts available for pre-paid bookings  
£14 an hour £130 for 10 hours £240 for 20 hours

Telephone 01752 336464 (Daytime)  
Telephone 01548 810715 (Evening)

## AVON OYSTERS

810876  
Freshly purified

Oysters

various Shellfish products for sale

The 'Oyster Shack' Bistro  
Stakes Hill, Bigbury

open July for the Summer  
Ring for opening hours  
Bring your own wine!

The 'Oyster House'

Bigbury-on-Sea  
Licensed Bistro

Fish & Shellfish

Please ring 810876 or 810676  
for details

Reservations recommended for both Bistros

# HOLYWELL STORES

(Opp: Pickwick Inn)

## St Ann's Chapel

MONDAY to SATURDAY 7.30AM - 6.00PM

SUNDAY 8.00AM - 5.00PM

Fresh Bread from Upper Crust Bakery, Salcombe

Groceries - Off Licence - Frozen Foods

Organic Veg Boxes from Riverford Farm

Local Fresh Meat

Video Hire - Calor Gas, Coal & Charcoal

Plus much, much more!

Visit Jen's Den for plants, compost etc.

Delivery Service Available

Telephone 810308

**YOUR FRIENDLY LOCAL STORE**

# TEN YEARS AGO ...

The new mirror at St Ann's Chapel had disappeared. Yet another replacement was requested.

A large tree at Westbury was brought down in a gale and blocked the road. It was cleared by Richard Perraton (of Lower Manor Farm) who left his lunch and brought his tractor to the scene.

There had been no progress in the hunt for a new Parish Clerk. It was rumoured that Myra Eddy was considering running courses for temporary clerks!

## HARVEST SUPPER

Thank you to all who worked so hard, both on the catering and the entertainments side, to make our Harvest Supper such a happy and successful occasion.

We must make a particular mention to the 'Kids' (and their Mums) who gave their time for rehearsal and who were so much a part of the night. So thank you to Anouska Bartlett, Jabez Bartlett, Coco Bartlett, Imogen Ireland, George Ireland, Wilbur Rundle, Dudley Rundle, Sebastian Sheppard, Oliver Skegg, Lucie Skegg, Matthew Stanesby, and Elizabeth Stanesby. We were sorry that Richard Gilliam was poorly and unable to be there.

Last, but certainly not least, thanks to all who came; it would have been a non-event without you.

Carol Allan  
Jacqueline Patterson

## RINGMORE HISTORICAL SOCIETY CHANGES

in the  
**COUNTRYSIDE**

An  
Illustrated Presentation  
for all ages  
by the celebrated

**Gordon Waterhouse**  
10.15am

Saturday 6th November  
**Parish Room**

Adults £1 Children Free  
(includes refreshments)

Competitions and Raffles  
for Children and Adults

Cake Stall, Book Stall and Exhibition

# Journey's End Journal

Here we are at the end of October; where does the time go? We may not have the summer crowds but this last month has been a really busy time for us and November is shaping up to be the same.

Our Beer Festival and Fish evening were very well supported - Thank You - and we are now looking forward to a number of events through November and December. We have a good varied selection of live music booked; our Curry evenings will continue and, of course, we have the British Legion Auction, all this month. Then December starts with special 'Game Cuisine' evening and we start our Christmas Menus. To whet your appetite here is a sample:

*Parsnip Soup*  
*Scotch Woodcock*  
*Hot Shellfish au Gratin*  
\*\*\*\*\*

*Roast Goose with Chestnut Stuffing*  
*Salmon in a Crab & Caper Sauce*  
*Ricotta & Broccoli Filo Pie*  
\*\*\*\*\*

*Home-made Traditional Christmas Pudding*  
*Choc - Rums*  
*Creme Brulee Ice Cream*

If you have special requirements we will tailor other menus to suit your needs.

Diary of events:

November	
Thurs 4th	Carl's quiz
Fri 5th	Live music - GIN Bonfire Fayre
Wed 10th	Curry night
Thurs 11th	John B's quiz
Fri 12th	British Legion Auction
Sat 13th	Live Music - Bob Moffit
Thurs 18th	John S's (Them & Us) quiz
Fri 19th	Live music - Blue Print (Jazz)
Wed 24th	Curry night
Thurs 25th	Jason's quiz
Fri 26th	Live Music - GIN
December	
Wed 1st	Christmas menus start
Sat 4th	Special 'Game Cuisine'
Sat 25th	Christmas Day - open 12.00 - 2.00 for drinks & nibbles
Sun 26th	Boxing Day Special Menu
Fri 31st	Millennium Eve Celebrations and Champagne finish!
Grahame and Debbie	

## WELCOME

Jane and James Stevenson have purchased Cross Park and, with luck, will have moved in by the end of October. They have come from Longbridge Deverill near Warminster in Wiltshire. We extend a warm welcome to them.

One of James' hobbies is writing and his first novel will be published in the middle of this month.



Tel 01548 810205

Mon - Sat 11.30am - 3.00pm  
6.30pm - 11.00pm

Food: 12.00 - 2.00 & 7.00 - 9.00

Sun Noon - 10.30pm

Food: 12.00 - 2.00 & 6.30 - 9.00



WOMEN IN THE COMMUNITY

The October meeting was addressed by Annabel Major in her professional capacity as 'A One Woman Travel Agency.' It was fascinating, as I prophesied and it seemed that almost every member had been saving up questions to fire at Annabel almost non-stop.

In between her answers (always good-humoured and informative) Annabel described the tribulations of starting such a business, with everything to learn but which she mastered in an amazingly quick and, at the same time, acquired a love for computers which to me seems incredible.

Our next meeting, on 11th November, will be the Annual General Meeting.

Looking ahead, the WI Christmas Party, for members and husbands, etc., will be at the Journey's End on Tuesday 14th December at 7.30pm for 8.00pm. Tickets, to include a three-course supper, are £10 a head and can be booked through Myra Eddy on 810203

Naomi Warne

## Royal British Legion

Ladies Section

**Poppy Appeal 1999**

**Monday 15th November**

**7.30pm**

**Ringmore WI Hall**

Raffles - Prizes - Refreshments  
All welcome

# THE MILLENNIUM CONTINUED

61 DAYS TO GO

At the Open Meeting held in the WI Hall on 13th October, further progress was reported.

Prior to planting the deciduous trees in mid-November, a site inspection will be carried out on Friday 5th November at 10.30am. Planting ideas were discussed and these will be considered at the site. It was reported that the National Trust have now fenced the bank. Volunteers are asked to make themselves known.

We are waiting to hear from the Coast & Countryside department at SHDC which has offered help in producing a full-size map and notice board. This hopefully will be a way of saving us considerable expense.

There is no further progress to report on the Church Clock; the Planning Application has been withdrawn for the time being. Meantime other sources of Grant Aid are being investigated.

The next Open Meeting will be held in the WI Hall on **Tuesday 9th November** at 7.30pm



Doreen Drowley, who died on 27th September was the wife of the Revd. Arthur Drowley. They lived in Ringmore at the Church House from 1987 until 1994 when



Kit Taylor who died in her 101st year in September lived in Ringmore from 1959 until she moved to Marlborough in Wiltshire to be near her family in 1995.



**AVON  
CONSERVATION  
ASSOCIATION**

On behalf of the Association, I would like to thank everyone who has responded to our leaflet.

It is so important to help to preserve the Avon Estuary which is comparatively unspoilt. We want to keep it this way for our children and grandchildren to enjoy.  
Stan Brunskill

## RINGMORE HISTORICAL SOCIETY

How well is the dramatic story concerning the Reverend William Lane, Rector of Ringmore at the time of the Civil War of 1642-1646?

William Lane became Rector of Ringmore in 1637 and, a year later, of Aveton Gifford as well. He was a staunch Royalist and although Plymouth declared against the King and for the Parliamentarians, he was not afraid to affirm his allegiance to the King from the pulpit. In a letter written by William Lane's youngest son, William, we are told that in 1642 parliamentary forces came by boat to Ringmore, plundered 'the valley of the Awmar', fired the Rectory (on the site of what is now Oldcastle) and carried off the Rector's two older sons to prisons in Plymouth.

During much of this time William Lane, along with the Modbury Royalists, led by the Champernownes, strove to raise 'a fort on a hill (part of the glebe of Aveton) which commanded the bridge leading to Kingsbridge'.

Before the fort could be completed, the Royalists were overcome by the Parliamentarians. In the words of the young Lane, '... then did the champions vaunt about the country and made diligently enquiry about Bishop Lane the traitor (for so the rabble stiled (sic) him). But they did not find him. He had slipped away and hidden himself in the tower of Ringmore church where he stayed for three or four months, fed and tended by his parishioners. Eventually he fled to France, returning only when he was able to buy his safety in England. The Rector's troubles had hardly begun. In 1645 he was dispossessed not only of his two livings but also of land of his own at



Aveton Gifford, so that he was left with only a few small watermills there from which to make a living for his wife and five children. It seems he was treated with much malice by Francis Barnard who had replaced him in the Aveton Gifford living. After a time, he moved to 'Hope's Nose' in Torbay where he quarried limestone to sell to the Topsham boats.

Even here William Lane suffered misfortune for his home was raided and pillaged by marauders from the sea. He decided to return to Aveton Gifford, only to find that Francis Barnard had blocked the water supply to his mills. He resolved then to plead his case at Cromwell's council board. At the age of sixty-three, with just a few pence in his pocket, he undertook the long walk to London to put his petition.

The petition was successful. Orders were given for Barnard to be dispossessed and William Lane was permitted to name someone to succeed Barnard at Aveton Gifford. He chose John Martin, 'in the hope to enjoy some comfort in the new possessor'.

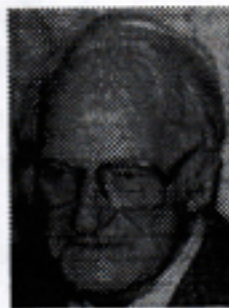
Sadly this hope was not realised, as the bleak words of his son's letter relate. '... coming home on foot from Honiton to Exon (Exeter), being very dry and money scarce, finding water in the road, drank thereof; which chilled his blood and threw him into an ague (and he took up his lodging at the King's Head in the High Street) and after into a fever which deprived him of his life. He lieth interred under the Chancel table in Alphington Church. This the exactest account I can give, I being the youngest of the family'.

**3rd November 7.30pm WI Hall**

**AGM: Speaker: Dennis Collinson**

'The Millennium and the Millennarians'  
Non members are welcome

Sir Douglas Hall who left the village last month had lived here since 1960. He was President of the Trojan Car Club and he hosted the annual rally at



}	MUSIC AT THE Paddock			
	WITH FRANK & DRINA			
Tuesday:	16th Nov	7th Dec		
	18th Jan	15th Feb	14th Mar	

# RINGMORE PARISH COUNCIL

Meeting: Tuesday 21st September

Present: 5 councillors, the Clerk, Neighbourhood Watch - David Young, Millennium Committee - Guy Eddy three other members of the public.

## Matters Arising

### Darkie Lane

The timber to construct the planned walkway has been promised and work will be undertaken as soon as possible.

### Cockle Lane

The improvements have been completed. These include a kissing-gate, single access gate and a finger post indicating the footpath.

### Other

Cllr Muller advised that the National Trust are still working to improve the drainage to the footpath at Lower Manor Farm and will be laying the hedge at Smugglers Path shortly. He had, together with a few others, cleaned up the beach at Ayrmer Cove. Volunteers had not been called for as he had not thought it necessary but he expressed his thanks to those who had helped.

### Renton Lane

An inspection is still awaited. The Parish Clerk spoke to Mr Masters of DCC Highways and he has confirmed that as soon as resources are available the matter will be dealt with. The Clerk will continue to monitor progress on this issue.

### Overgrown Hedges

Some work has been undertaken at 1 Cumberland Cottages following contact by the Clerk. However, the problem of overhanging brambles and greenery is still there and the owners will be contacted again.

There are a number of other areas in the village where overhanging brambles are a particular problem, especially for pedestrians trying to tuck into a hedge to avoid traffic. Householders are again reminded that it is their responsibility to keep boundary hedges in good order.

### Town Green and Town Well area

It was agreed that two quotations be obtained for regular professional cutting/trimming and general keeping tidy. The matter of the safety of the steps throughout the area, which can become slippery when wet, was again discussed. The matter is to be taken up with the Council's insurers for their recommendations.

### Haven Leisure

Clarification has been received concerning the unregistered land at Challaborough.

## Matters raised by Parishioners

Stan Brunskill has indicated his wish to

stand down as Deputy Tree Warden. Cllr Jim Freeman volunteered to be his replacement. Brian McCabe remains as Tree Warden.

## Neighbourhood Watch

David Young had nothing to report.

## Millennium Committee

Guy Eddy advised that on 5th November a site inspection will take place with a view to planning the tree planting. Anyone wishing to attend would be most welcome. Planting will begin in the week commencing 15th November; it is envisaged that 500 trees will be planted at a time!

Seats: hopefully these will be in place by Easter.

Parish Maps: still searching out ways and means to display these.

Clock on Church Tower: as the grant application was unsuccessful, the planning application has, for the time being, been withdrawn. Other avenues of funding are being explored.

Millennium Mugs: Cllr Tagent has contacted two suppliers to get some idea of cost. She agreed to obtain catalogues to bring to the next Council meeting so the matter can be discussed further.

## Planning Applications

Pleasant Cottage - first floor extension, Mr & Mrs Parkin - approved.  
Beach Cafe, Challaborough - renewal of permission to rebuild, Haven Leisure - approved.

## Finance

The Clerk reported that the three-yearly audit of the Council's accounts is to take place in January 2000.

## Any Other Business

A letter of complaint has been received concerning the overgrown state of Blackberry Lane. This is designated as an unsurfaced road and the complainant had already written to Mr Halliday, the Local Service Officer. He has undertaken to inspect the lane as soon as possible.

The Council has been advised by the secretary of the Parochial Church Council that permission is being sought for a number of very old gravestones to be moved to provide much needed burial space. The stones in question will still be displayed within the boundaries of the churchyard. The Council had no objections.

## Next meeting

Tuesday 23rd November 7.00pm WI Hall

# Short Mat Bowls

## Adult Children's Party

Tickets are still available from  
Geof Dykes 810123,  
Adrian Muller 810542  
Colin Jackson 810292.

## Royal British Legion Poppy Appeal 1999

It is that time of year when I ask for your support towards the annual Royal British Legion Poppy Appeal. You always respond wonderfully because I think you feel, like me, that the Legion is different; those that you are helping have themselves often given a great deal for their country. Year after year servicemen and women are killed and injured, leaving dependants who often have young families to bring up. That is just one way in which the Legion can offer help and there are many others. The leaflets that the poppy sellers offer you are well worth reading to show what wonderful work the Poppy Appeal makes possible.

Last year our final total came to an astonishing £3701.55, which is just £50 short of an amazing £3 per head for every man, woman and child in our three parishes!

### ONCE AGAIN WE ASK FOR YOUR WONDERFUL SUPPORT

As in past years, we are running a number of fund-raising activities during this period.

### Diary of Events

Saturday 30th October

House to house collection begins

Thursday 11th November

Two minute silence at 11.00am

Friday 12th

Auction at Journey's End

Items for Sale wanted

Start 8.00pm with weigh-in of

Alan & Robbie McCarthy who have been doing a sponsored slim.

Whisky raffle draw at end of

evening.

Saturday 13th

Coffee Morning at Sedgewell

Sands

Bigbury on Sea at 10.30am.

Bring & Buy, Cake Stall, three

Raffles and good prizes.

Sunday 14th

Remembrance Service 10.50am

St Lawrence Church, Bigbury

Monday 15th

Whist Drive at WI Hall 7.30pm

Good prizes and Raffle

Guy Eddy  
Poppy Appeal Organiser

# Julie

Fully Qualified



## Mobile Hair-stylist

Ladies & Gents  
Competitive Prices  
Ansaphone available

Bigbury-on-Sea  
810634

### PHOTO EXPRESS - Modbury

Hours of opening

Monday	9.00am - 1.00pm
to	&
Friday	2.30pm - 6.00pm
Saturday	9.00am - 1.00pm
	2.30pm - 5.00pm

**MODBURY PHARMACY**

Tel: 830215



### PRE-TEXT

Graphics Design / Artwork  
Flyers/Posters/Leaflets/Advertisements  
Overhead Foils - Design & Preparation  
Logo Design  
All aspects of Desk Top Publishing

GEORGE DYKES, RINGMORE VEAN, RINGMORE, TQ7 4HL  
TEL 810233

## Kevin Light

PLUMBING & HEATING  
CORGI & A.C.O.P. Reg.

Wychbury  
Ringmore Drive  
Bigbury on Sea

Tel 01548 810726

### FOR 'REAL' CHEESE & WINE

**MACKGILLS**

★ *Handmade Farmhouse English & Continental Cheese*

★ *Home-cooked Ham & Salamis*

★ *Home-cooked Pies & Cakes etc.*

★ *Wine, Beer, Sherry & Cider ... and much more*

Telephone Enquiries Welcome



4 Church Street, Modbury, Devon PL21 0QW  
Telephone: Modbury (01548) 830860

## M and J P Builders

All types of building work undertaken

**New Buildings**

**Renovations**

20 years experience  
in Building Trade

For FREE Estimates and Advice  
please phone  
810633

## FARE DEALS TRAVEL

Quality Service  
Personal Attention  
**the Independent Agent  
for Independent People**

Make this the year that  
YOU do something

### different

From Ballooning to Whale Watching  
You name it ... we will find it  
Also, all the usual flights of fancy.  
Air Fares - Packages - Tailor Made, etc.  
Rail Tours - Short Breaks - Car Hire  
Hotels - Insurance

TEL: 01548 810869

HIGHER MANOR  
RINGMORE  
KINGSBRIDGE  
TQ7 4HJ



## TILLY DOWNING BSc POD

STATE REGISTERED CHIROPODIST

Home visits or in-surgery treatment  
3 years training, very safe and thorough

THE LAURELS, FORE STREET, AVETON GIFFORD  
TEL: 01548 550072

Near the School - opposite the car park

## BIGBURY SHOP & POST OFFICE

Daily Deliveries - No order too small - Just give us a ring

**Bread + Fruit & Veg + Milk & Dairy Products**  
**Newspapers & Magazines**  
**Best Back Bacon + Ham + Tongue + Cheese**

SHOP  
Daily 8.00am - 4.00pm  
Sunday 9.00am - 1.00pm  
01548 810213

any amount cut  
**Aune Valley Meat**  
**Calor Gas & Coal**  
**John & Margaret Inman**

POST OFFICE  
9.00am - 1.00pm  
Monday to Friday  
01548 810213

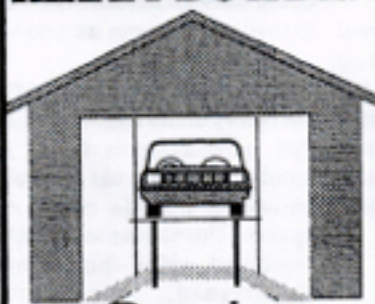
## T.P.S. SERVICES

INTERIOR - EXTERIOR PAINTER-DECORATOR  
PROPERTY MAINTENANCE & RENOVATION  
TILING - GLAZING - GARDEN MAINTENANCE

FOR FREE ESTIMATES CONTACT

**Mr T P Smith**  
Modbury (01548) 830961

## HIRAM BOWDEN



**Repairs  
Servicing  
MOT**

Cars collected & returned  
Tel: 550129  
Evening 01752 896065



**Jinny McCabe**  
Wedding Florist

**Bouquets**

**Church & Marquee  
Decoration**

Windwood Farm  
Ringmore  
Kingsbridge, TQ7 4HJ  
Tel: 01548 810538



The Royal Oak



FREE HOUSE

# The Royal Oak Bigbury

Telephone: (01548) 810313



## NOVEMBER DIARY

Winter is making a brave attempt to get here, but every warm and / or sunny day we have now brings us nearer to Spring. Well, that's what we always say, anyway....

November means **BONFIRE NIGHT!** It is now traditional with us to have our bonfire on **THE DAY - the 5th.** Starting at 7.00pm, so early enough for the children. Music with Wendy in the bar and fireworks

The fire will be in the field right next to the pub, by kind permission of John Cullen. If you have things to burn, bring them along - preferably early in the day.

MONDAYS  
RUCKER (BLOOM) - COME  
AND JOIN IN

ALTERNATE TUESDAYS  
FOUR AT THE OAK - ALL  
WELCOME.

WEDNESDAYS  
FOUR - WE'RE IN THE LEAGUE

FRIDAYS  
DARTS - WE'RE STILL IN THE  
LEAGUE - COME AND JOIN IN  
THE FRAY!

FRIDAY  
IS ALSO TRADITIONALLY A FISH  
NIGHT, SO WE WILL BE  
CONCENTRATING ON FISH -  
SEE THE SPECIALS BOARD

### CHRISTMAS

WE ARE TAKING BOOKINGS FOR CHRISTMAS DAY LUNCH AT  
£47.50 PER HEAD FOR SIX COURSES (PLUS COFFEE AND MINTS).  
BOOKINGS ESSENTIAL AS THERE ARE LIMITED VACANCIES -  
AVOID DISAPPOINTMENT.

LOOK OUT FOR OUR USUAL CHRISTMAS EVENTS IN THE  
DECEMBER DIARY AND WE CAN DO SMALL PARTIES - WITH  
CHRISTMAS STYLE MENUS IF YOU LIKE

Enigma

## OCTOBER SOLUTION

GRENADE	GEAR DEN
TORPEDO	DOOR PET
BOOMERANG	GROOM BEAN
CLAYMORE	CLOY MARE
CROSSBOW	SOB CROWS
HOWITZER	ZERO WITH
DAGGER	RED GAG
BAYONET	NEAT BOY
SWORDSTICK	WORDS TICKS

Nothing is difficult when you know how and no-one is more smug than someone who thinks they are the only one who knows how! That's Enigma! However, once again, you have proved that you know how. A possible theme of 'capitals' did not throw you although Grenade could be a capital in the West Indies, Claymore - Scotland, Howitzer - don't mention the war! Would backpackers trek to the Boomerang Opera House? (I know it's Canberra but it doesn't have a famous opera house or bridge or harbour!). Correct answers were received from The Furry Boys; Taurus with a gentle chiding for the 'capital' feint; LSB, whose eyelashes flutter so quickly that it's a wonder she can see the paper but I like it and the Beginners with no frills, deviations or alternatives. There was one new entrant, call sign DREW DOOR FOXES (anagram: OXFORD ROWED S.E. - which is why they lost the boat race) but they contrived to make the wrong pairings producing answers such as DONGMORE - using church bells as a weapon, and KITSWITCH which is entirely unwholesome!

### NOVEMBER

A familiar puzzle but not, I hope, a familiar solution. What is the longest word in the grid? Letters can be used only once and must be contiguous. Of course, you can move in any direction.

G	N	U	Q	W
O	S	I	H	V
C	T	E	D	P
X	L	A	R	K
Y	F	B	M	J

SWDevon  
Conservative Association  
Bigbury, Ringmore & Kingston Branch

## CHRISTMAS & SUPPER PARTY

Memorial Hall  
St Ann's Chapel

Friday 10th December 1999  
7.00pm for 7.30pm

A party evening with  
**Len Jackman**

Tickets £10  
including Supper and Punch on arrival  
Please bring your own wine  
Tickets from Bill Warne 810214

## St Luke's Hospice

I am pleased to tell you that Ringmore raised £140.83p in the recent house-to-house collection. The total for our three villages was £280.67p. Thank you for you support and special thanks to Debbie for her assistance.

Drina Williams, Area Organiser

## Kingston Klobber

For  
**Waistcoats  
Bow Ties  
and many of your  
sewing needs**

Kingston Klobber  
Home Farm  
Kingston  
Kingsbridge TQ7 4PU

Kim Watkins  
01548 810361

